

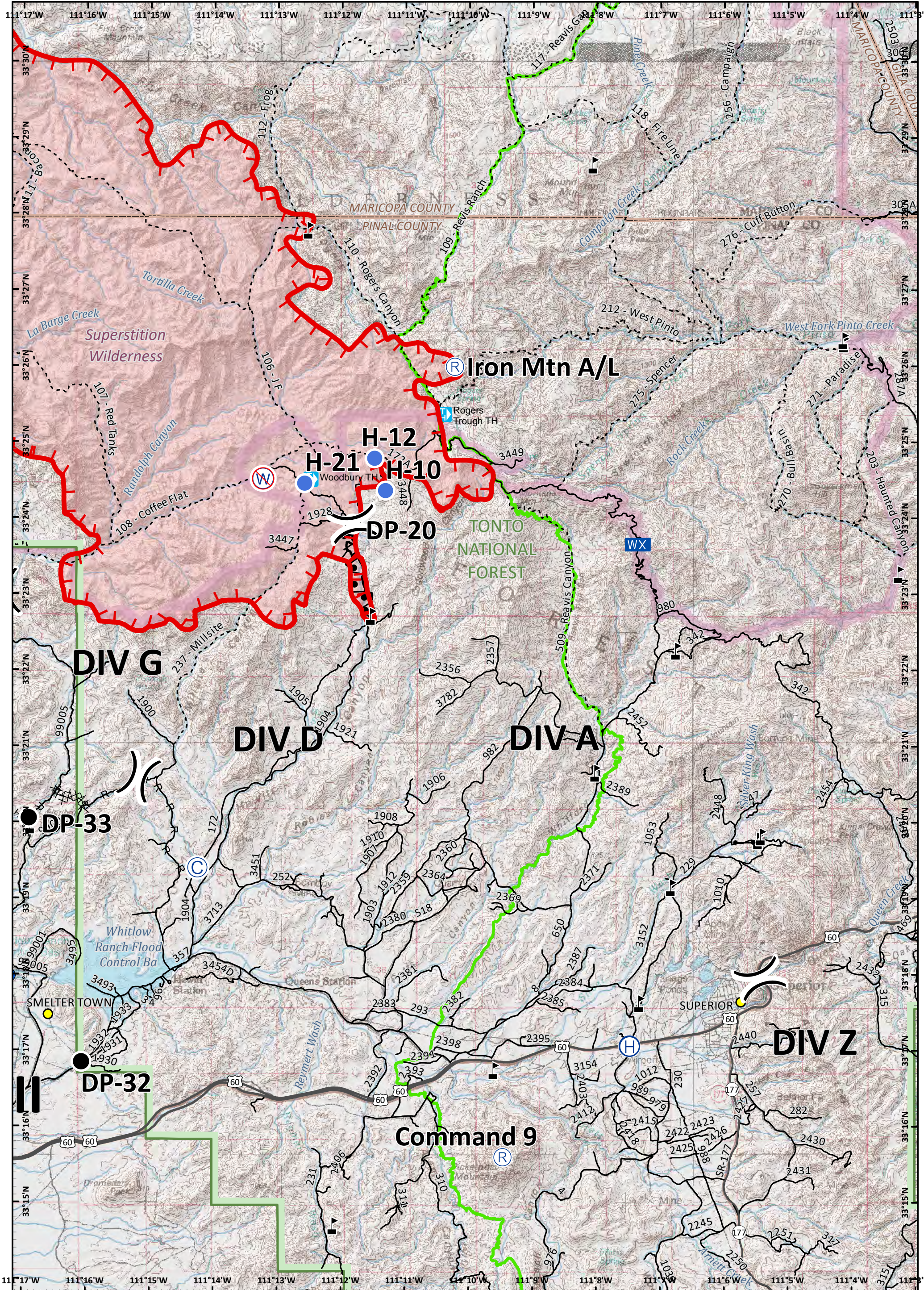
Woodbury Fire
 AZ-TNF-000579
 6/16/2019 Day

Incident Action Plan
Index Map

Grid Index	Drop Point	Helispot	Mobile Weather Unit	Trailhead	Uncontrolled Fire Edge	Proposed Dozer Line	Wilderness
Bridge	Gate	Incident Command Post	Repeater	Division Break	Completed Dozer Line	Planned Fire Line	Waterbody
Camp	Dip Site	Helibase	Restricted Water Source	Branch Break	H - Completed Hand Line	Aerial Retardant Drop	Stream
Landmark				Cities	R - Road as Completed Line	County	
				Towns	Completed Burnout	Forest Boundary	

Approx 35,351 acres as of 6/15/19 1000 hrs

Miles 0 1 2
 Kilometers 0 1 2
NAD 1983 UTM Zone 12N
 Prepared by Admin
 6/15/2019 2:25 hrs

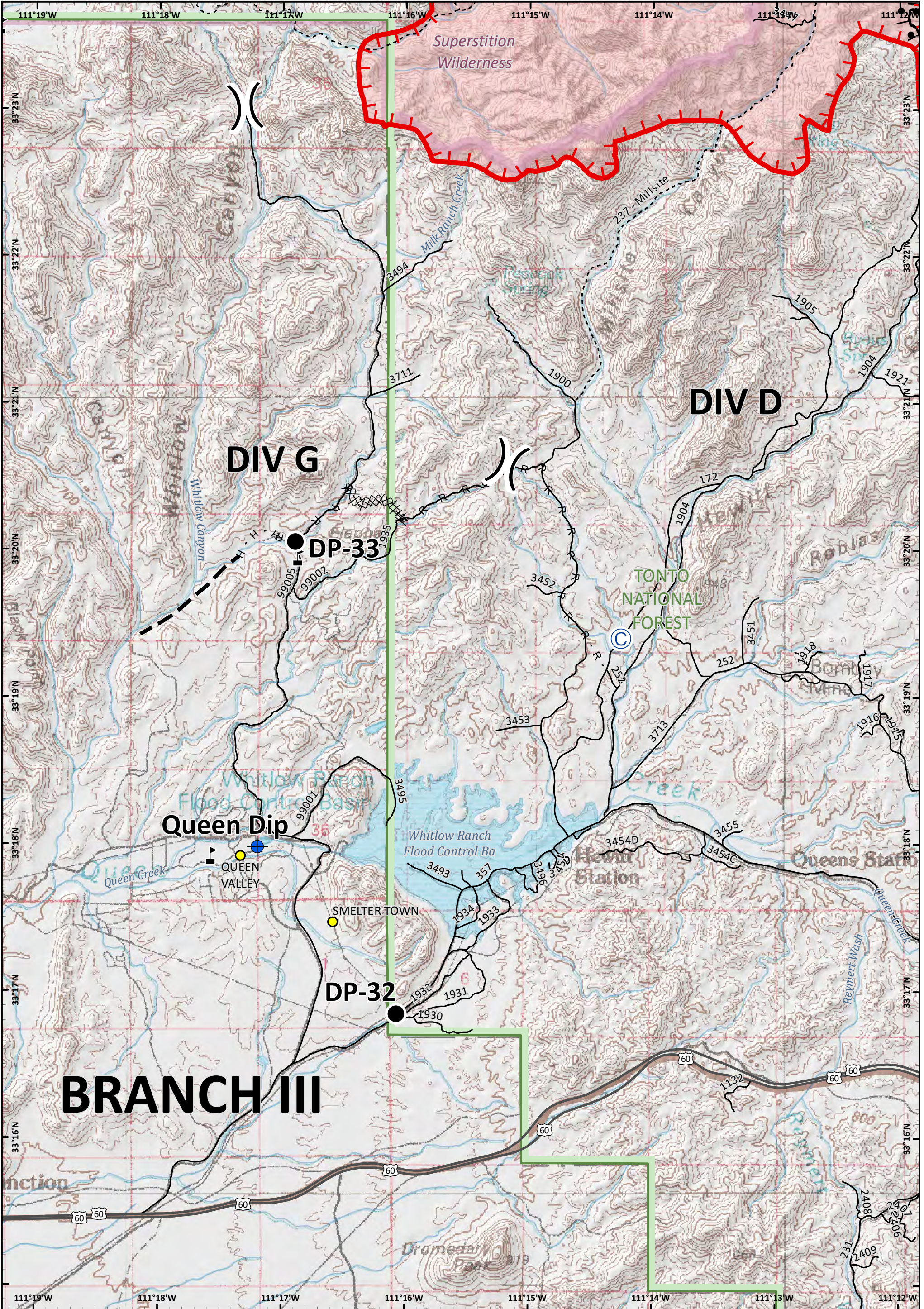


Incident Action Plan
 Page: 1
 DIV A/D
Woodbury Fire
 AZ-TNF-000579
 6/16/2019 Day

Camp	Gate	Mobile Weather Unit	Value at Risk	Uncontrolled Fire Edge	Aerial Retardant Drop
Dip Site	Helibase	Repeater	Completed Dozer Line	Completed Hand Line	Cities
Drop Point	Helispot	Restricted Water Source	Division Break	Road as Completed Line	Trailhead
			Completed Burnout	U.S. Highway	State Highway
				Trail	Arizona National Scenic Trail
					County Boundary
					Wilderness
					Waterbody
					Stream

Approx 35,351 acres
 6/15/19 1000 hrs
 0 0.8 1.6
 Miles

NAD 1983 UTM Zone 12N
 Prepared by: Admin
 6/15/2019 2125 hrs

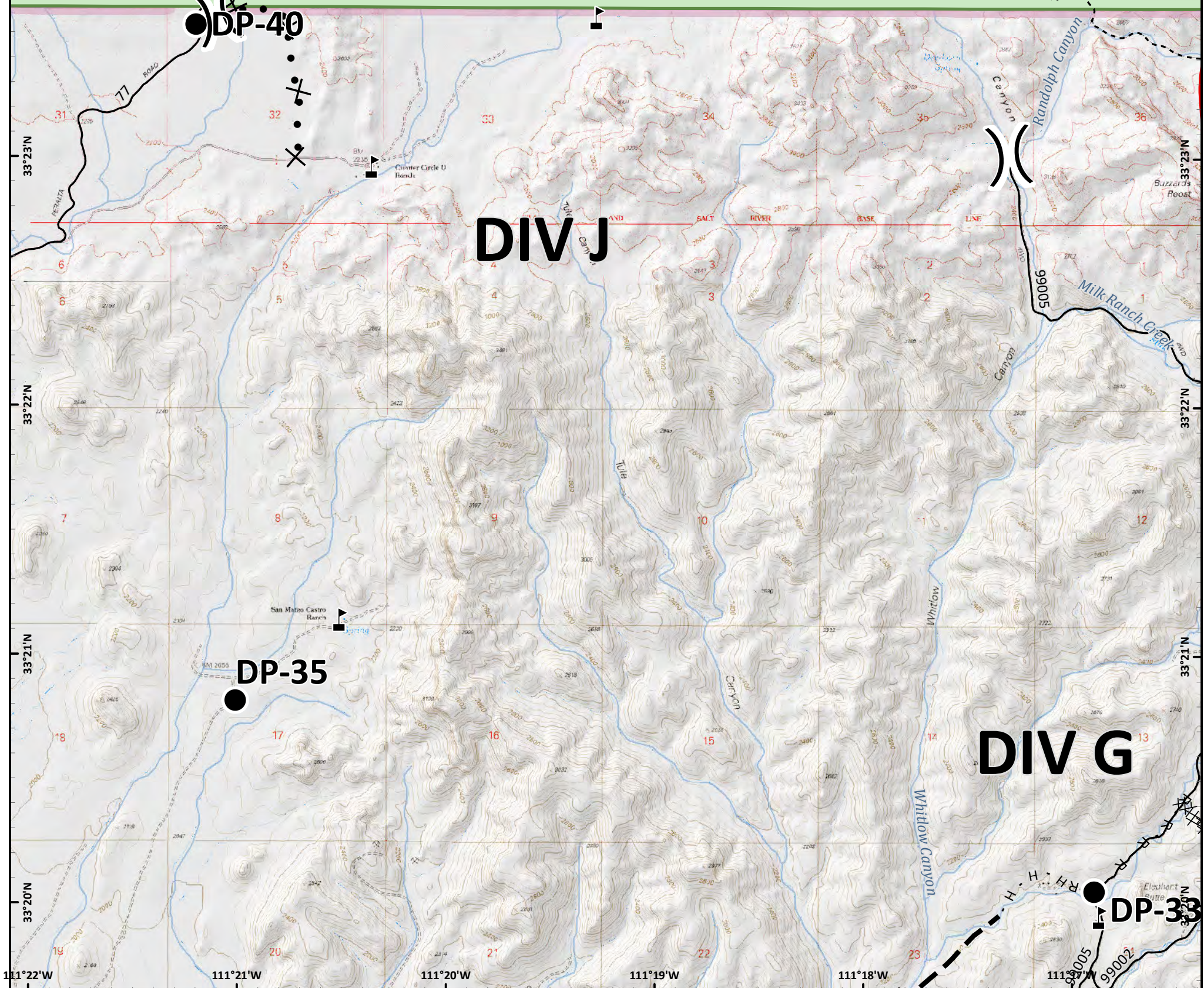
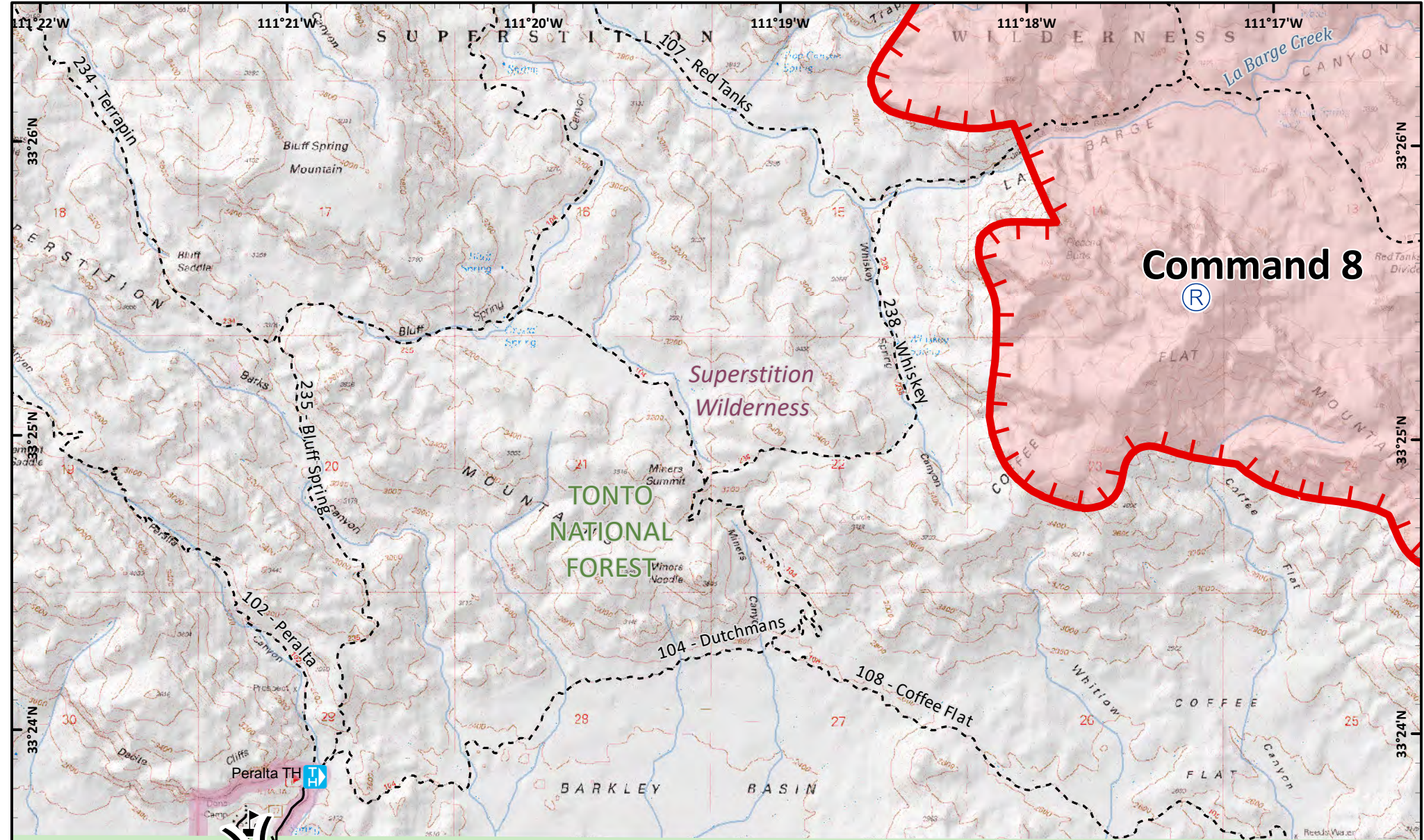


Incident Action Plan
 Page: 2
 DIV G
Woodbury Fire
 AZ-TNF-000579
 6/16/2019 Day

Camp	Value at Risk	Uncontrolled Fire Edge	Planned Fire Line	Forest Boundary
Dip Site	Division Break	Completed Dozer Line	Aerial Retardant Drop	Wilderness
Drop Point	Completed Hand Line	Completed Burnout	U.S. Highway	Waterbody
	Road as Completed Line	Trail	County	Stream


Approx 35,351 acres
 6/15/19 1000 hrs
 0 0.4 0.8
 Miles


NAD 1983 UTM Zone 12N
 Prepared by: Admin
 6/15/2019 2125 hrs

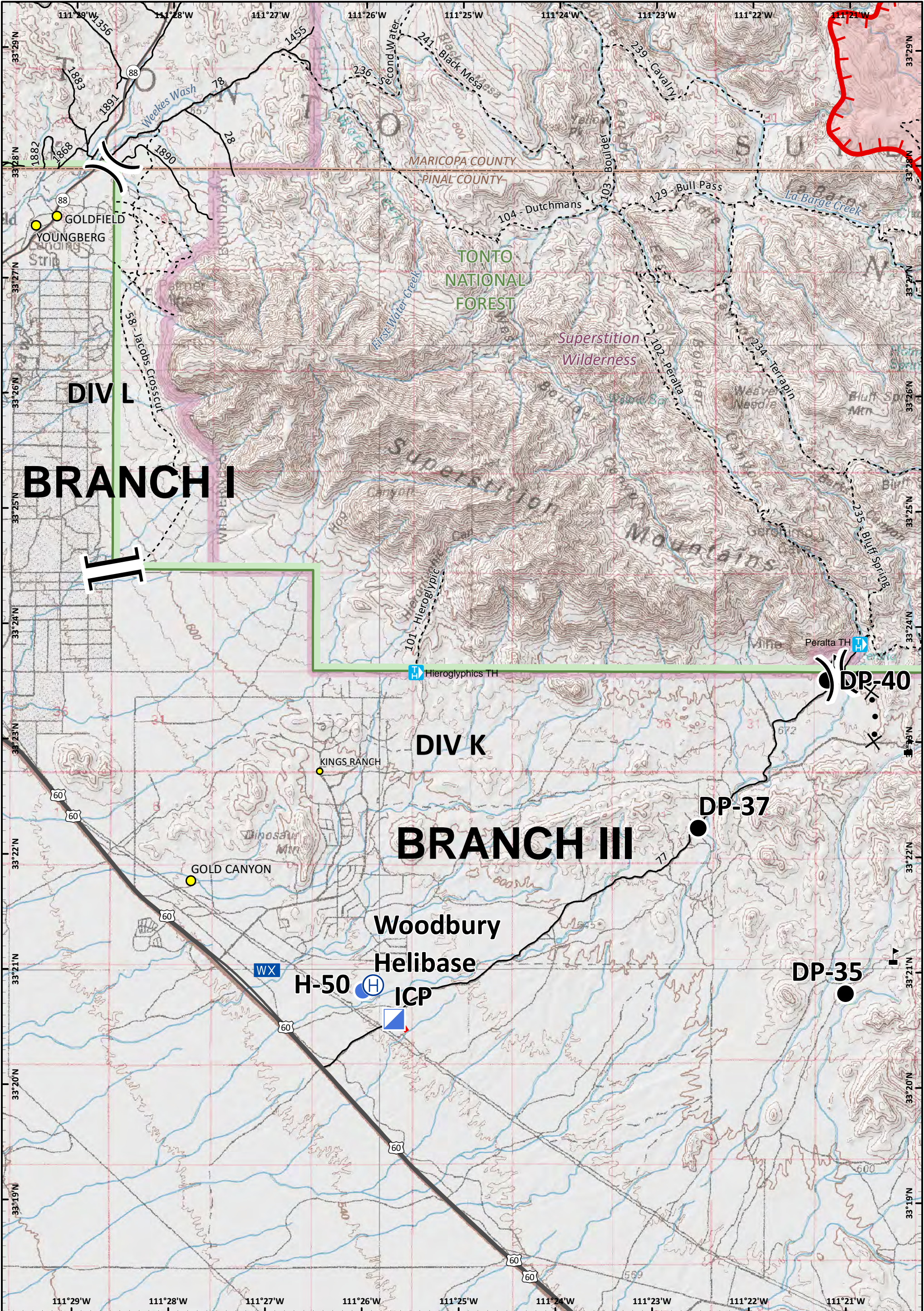


Incident Action Plan
 Page: 3
 DIV J
Woodbury Fire
 AZ-TNF-000579
 6/16/2019 Day

- Drop Point
- Ⓡ Repeater
- ⚠ Value at Risk
- Ⓜ Division Break
- XXXX Completed Dozer Line
- H - Completed Hand Line
- R - Road as Completed Line
- ⊗ Proposed Dozer Line
- 📍 Trailhead
- Road
- - - Trail
- ▭ County
- ▭ Forest Boundary
- ▭ Wilderness
- Stream


 Approx 35,351 acres
 6/15/19 1000 hrs
 0 0.3 0.6
 Miles


 NAD 1983 UTM Zone 12N
 Prepared by: Admin
 6/15/2019 2125 hrs



Incident Action Plan

Page: 4

DIV K

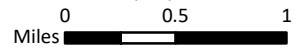
Woodbury Fire

AZ-TNF-000579

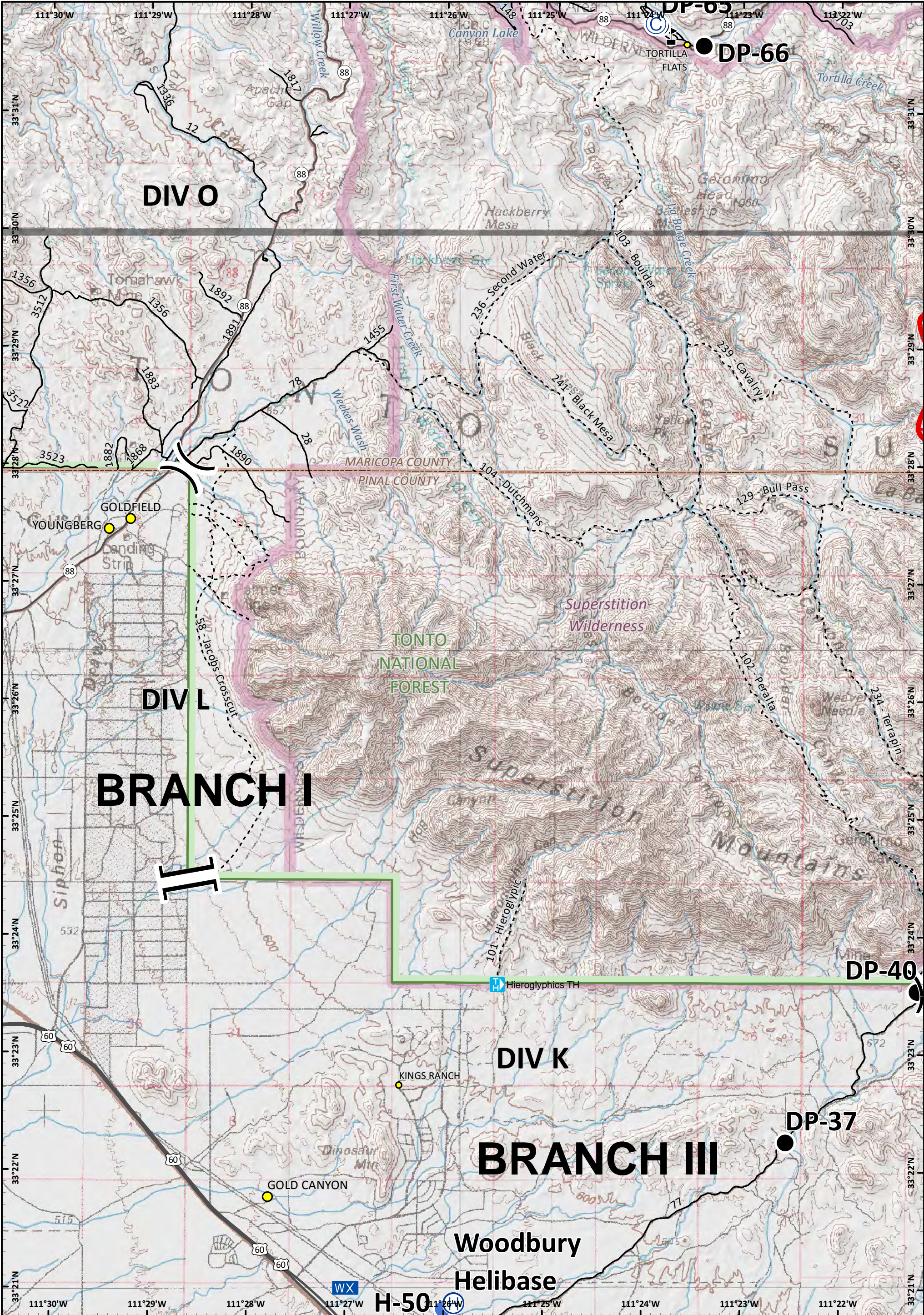
6/16/2019 Day

- Drop Point
- Ⓜ Helibase
- Helispot
- ▢ Incident Command Post
- WX Mobile Weather Unit
- Ⓜ Value at Risk
-) (Division Break
-][Branch Break
- ✂ Proposed Dozer Line
- Cities
- Towns
- 📍 Trailhead
- U.S. Highway
- State Highway
- Road
- Trail
- ▭ County
- ▭ Forest Boundary
- ▭ Wilderness
- ▭ Waterbody
- Stream
- ▭ Uncontrolled Fire Edge

Approx 35,351 acres
6/15/19 1000 hrs



NAD 1983 UTM Zone 12N
Prepared by: Admin
6/15/2019 2125 hrs



Incident Action Plan





Page: 5




DIV L




Woodbury Fire

AZ-TNF-000579

6/16/2019 Day


-  Camp
-  Helispot
-  Drop Point
-  Helibase

-  Mobile Weather Unit
-  Division Break
-  Value at Risk

-  Branch Break
-  Uncontrolled Fire Edge
-  County


-  Forest Boundary
-  Wilderness
-  Waterbody
-  Stream
-  Trailhead
-  U.S. Highway
-  State Highway
-  Road
-  Trail

-  Cities
-  Towns



Approx 35,351 acres
6/15/19 1000 hrs

0 0.5 1
Miles

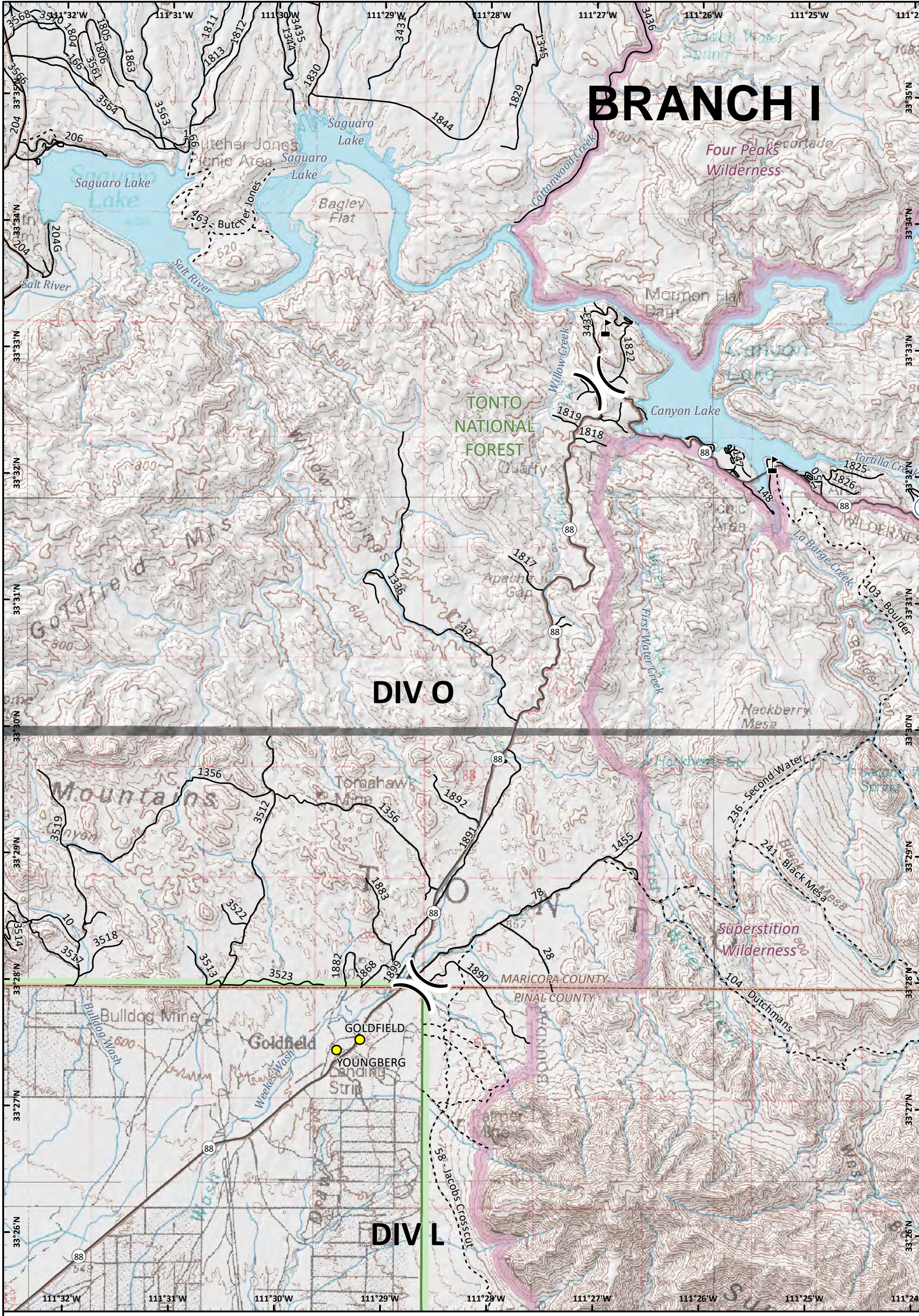


NAD 1983 UTM Zone 12N
Prepared by: Admin
6/15/2019 2125 hrs

BRANCH I

DIV O

DIV L



Incident Action Plan
Page: 6
DIV O
Woodbury Fire
AZ-TNF-000579
6/16/2019 Day

- Camp
- Drop Point
- Value at Risk
- Cities
- State Highway
- Road
- Trail
- County
- Forest Boundary
- Wilderness
- Waterbody
- Stream
- Division Break

Approx 35,351 acres
6/15/19 1000 hrs
0 0.45 0.9
Miles

SOUTHWEST AREA INCIDENT MANAGEMENT TEAM

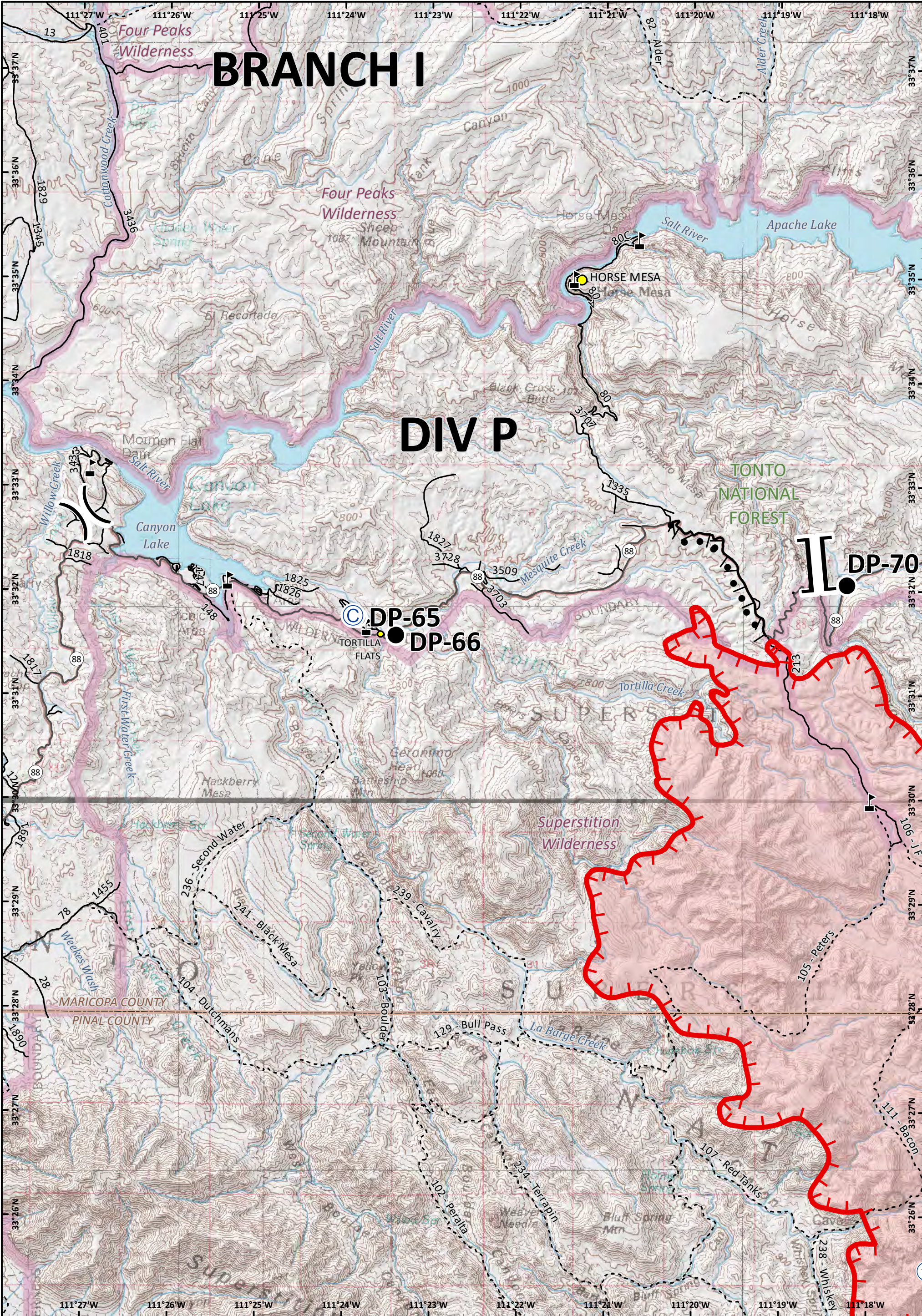
NAD 1983 UTM Zone 12N
Prepared by: Admin
6/15/2019 2125 hrs

BRANCH I

DIV P

DP-70

DP-65
DP-66



Incident Action Plan

Page: 7

DIV P

Woodbury Fire

AZ-TNF-000579

6/16/2019 Day



Camp



Value at Risk



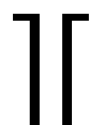
Drop Point



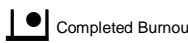
Repeater



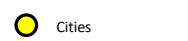
Division Break



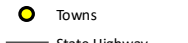
Branch Break



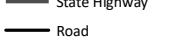
Completed Burnout



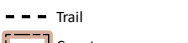
Cities



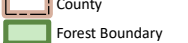
Towns



State Highway



Road



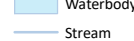
Trail



County



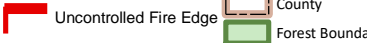
Wilderness



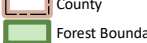
Waterbody



Stream



Uncontrolled Fire Edge



Forest Boundary

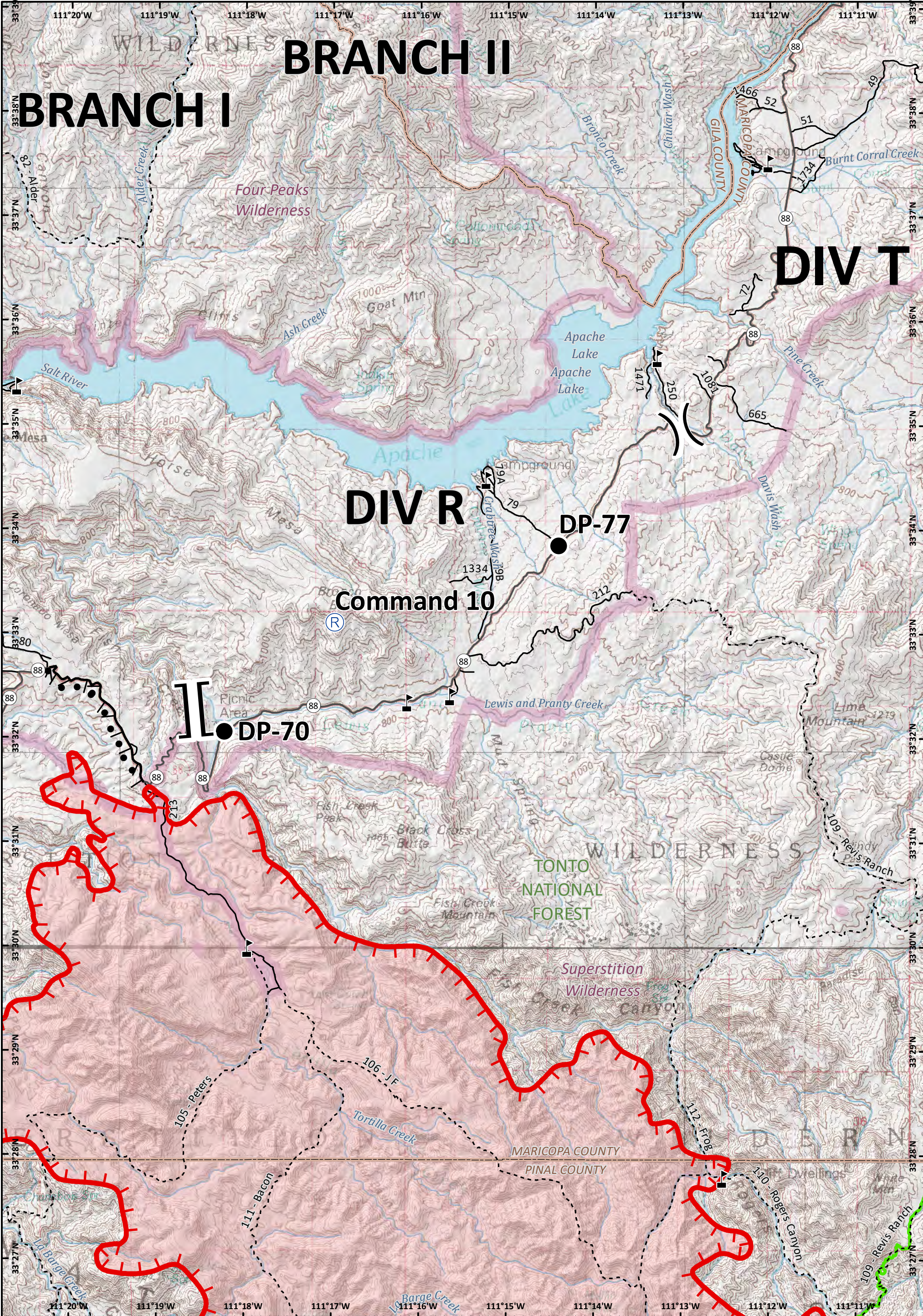


Approx 35,351 acres
6/15/19 1000 hrs

0 0.55 1.1
Miles




NAD 1983 UTM Zone 12N
Prepared by: Admin
6/15/2019 2125 hrs

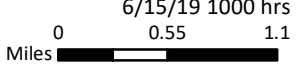


Incident Action Plan
 Page: 8
 DIV R
Woodbury Fire
 AZ-TNF-000579
 6/16/2019 Day


- Drop Point
- Ⓡ Repeater
- ▲ Value at Risk
- ⌋⌋ Division Break
- ⌋⌋ Branch Break
- ⬤ Completed Burnout
- State Highway
- Road
- - - Trail
- Arizona National Scenic Trail
- ▭ County
- ▭ Forest Boundary
- ▭ Wilderness
- ▭ Waterbody
- ▭ Stream



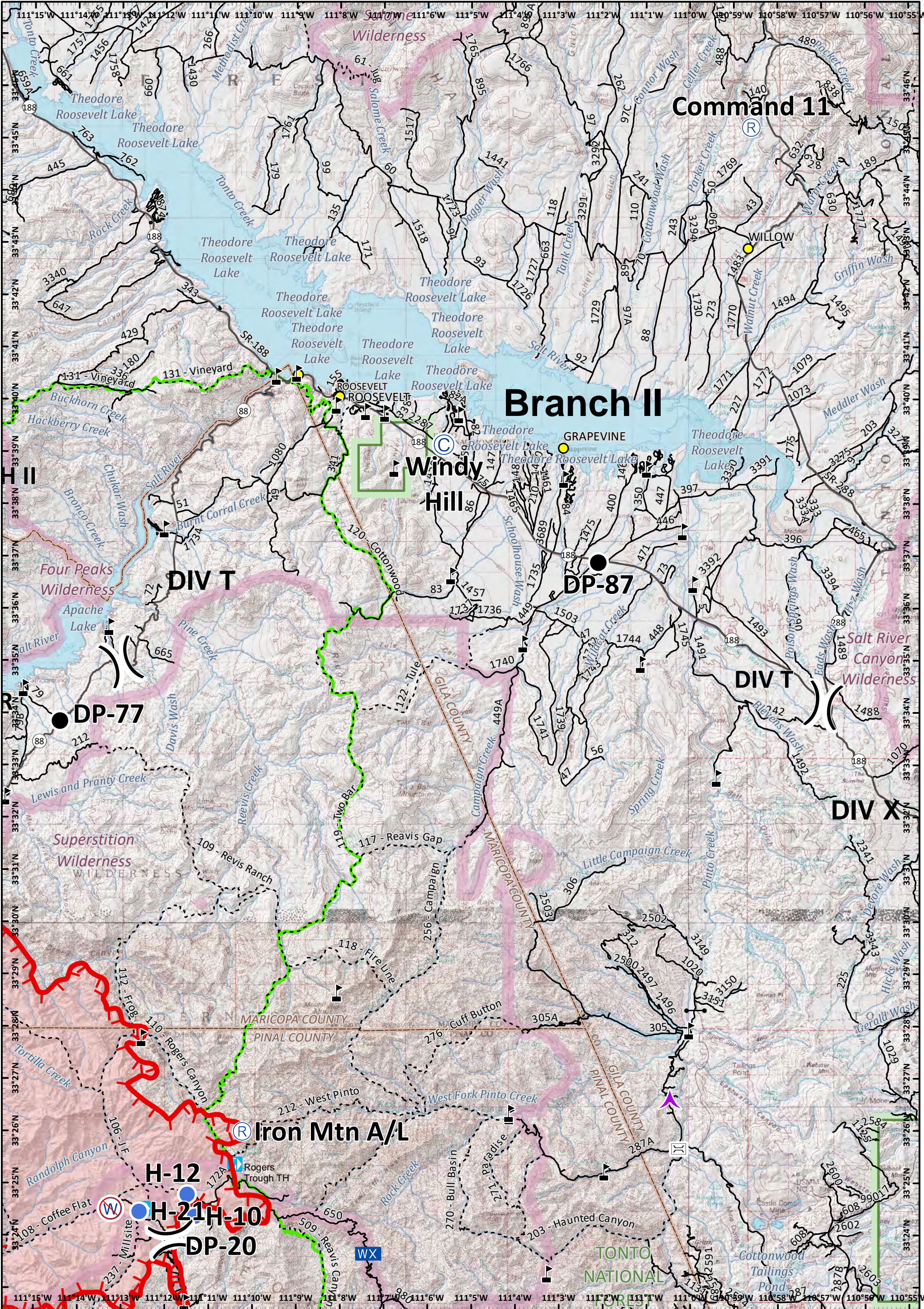
Approx 35,351 acres
 6/15/19 1000 hrs



0 0.55 1.1
Miles



NAD 1983 UTM Zone 12N
 Prepared by: Admin
 6/15/2019 2125 hrs



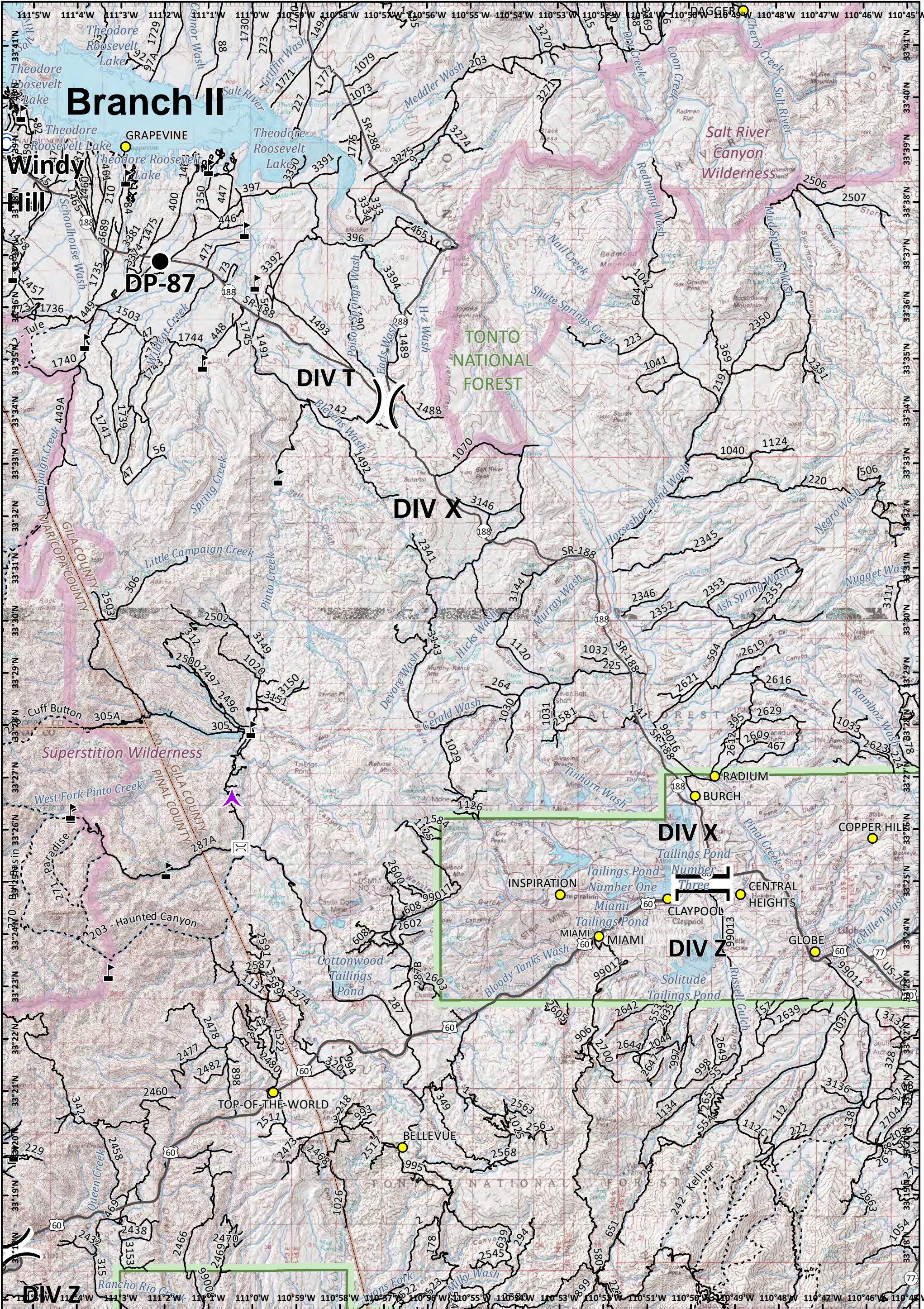
Incident Action Plan
 Page: 9
 DIV T
Woodbury Fire
 AZ-TNF-000579
 6/16/2019 Day

	Aerial Hazard		Drop Point		Repeater		Completed Burnout		Stream
	Bridge		Gate		Restricted Water Source		Aerial Retardant Drop		State Highway
	Camp		Helispot		Value at Risk		Cities		Road
	Mobile Weather Unit		Uncontrolled Fire Edge		Trailhead		Towns		Trail
					Division Break		Arizona National Scenic Trail		County
							Forest Boundary		Wilderness
							Waterbody		U.S. Highway

Approx 35,351 acres
 6/15/19 1000 hrs

0 1 2 Miles

NAD 1983 UTM Zone 12N
 Prepared by: Admin
 6/15/2019 12:25 hrs



Incident Action Plan
 Page: 10
 DIV X
Woodbury Fire
 AZ-TNF-000579
 6/16/2019 Day

- Aerial Hazard
- Drop Point
- Bridge
- Gate
- Camp
- Value at Risk
- Division Break
- Branch Break

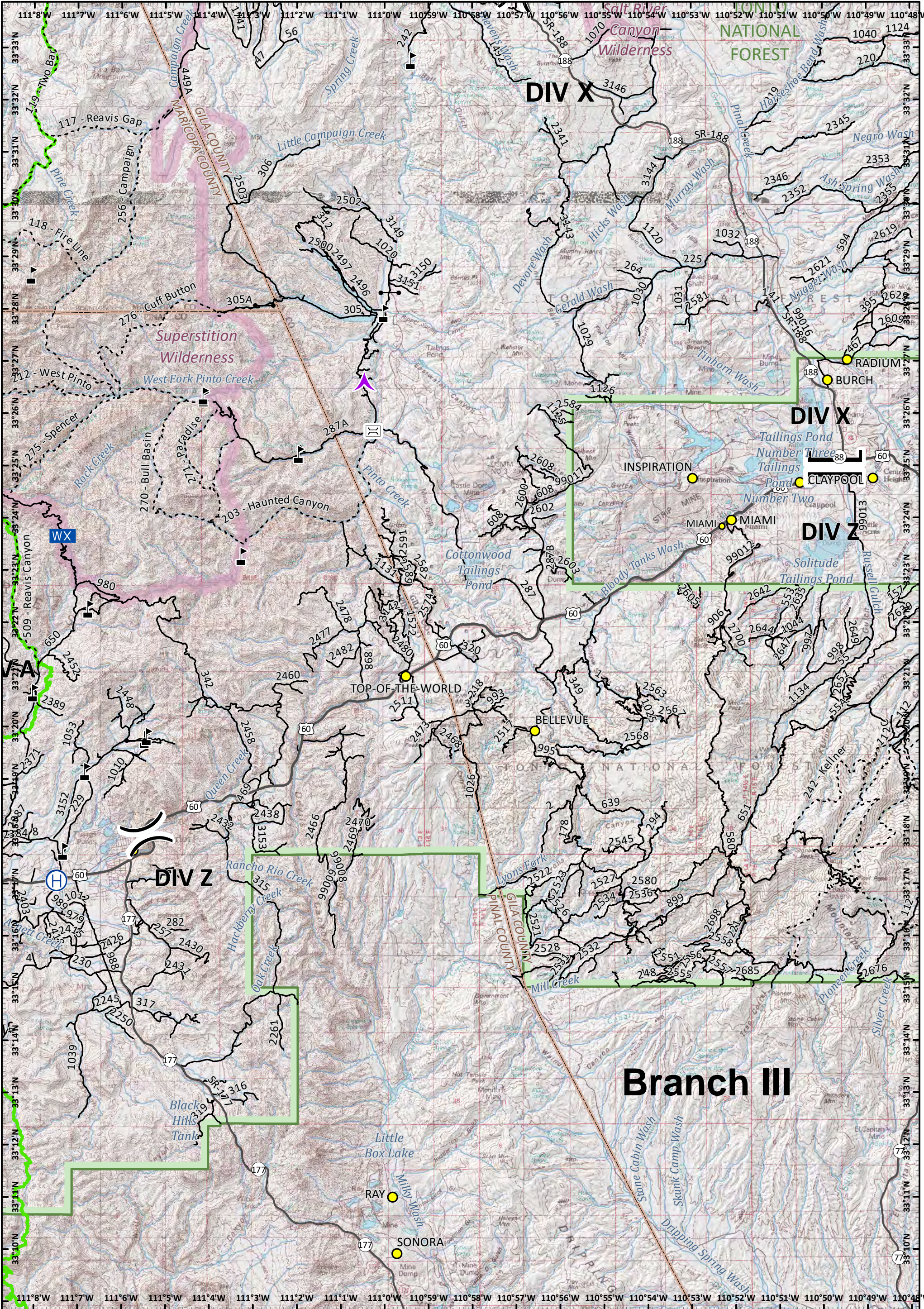
- Towns
- U.S. Highway
- State Highway
- Road
- Trail
- County
- Forest Boundary
- Wilderness
- Cities

- Waterbody
- Stream







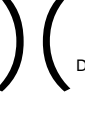

Approx 35,351 acres
 6/15/19 1000 hrs


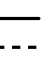







Miles 0 1 2

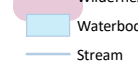


NAD 1983 UTM Zone 12N
 Prepared by: Admin
 6/15/2019 2125 hrs




Incident Action Plan
 Page: 11
 DIV Z
Woodbury Fire
 AZ-TNF-000579
 6/16/2019 Day


-  Aerial Hazard
-  Helibase
-  Bridge
-  Mobile Weather Unit
-  Gate
-  Value at Risk
-  Division Break
-  Branch Break

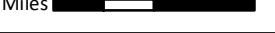
-  Towns
-  U.S. Highway
-  State Highway
-  Road
-  Trail
-  Arizona National Scenic Trail
-  County
-  Forest Boundary
-  Cities

-  Wilderness
-  Waterbody
-  Stream



Approx 35,351 acres
6/15/19 1000 hrs





Miles

NAD 1983 UTM Zone 12N
Prepared by: Admin
6/15/2019 12:25 hrs