

Woodbury
 AZ-TNF-000579
 06/16/2019 Day Ops
Operations Map
DIV A/D

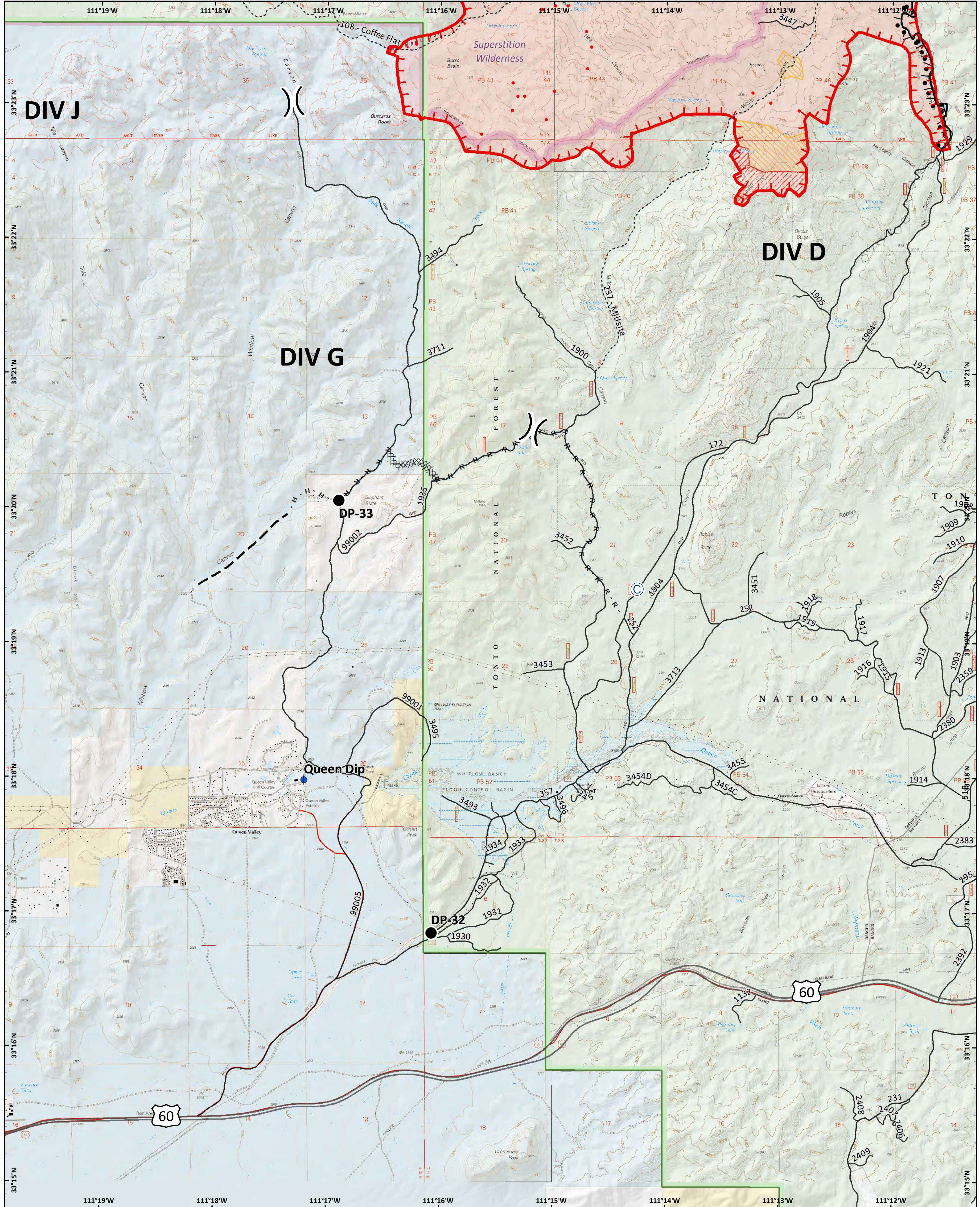
- | | | | | |
|------------|---------------------|-------------------------|-------------------------------|-------------------------------|
| Camp | Helibase | Repeater | Road | Private |
| Dip Site | Helispot | Restricted Water Source | Trail | State |
| Drop Point | Landmark | Division Break | Arizona National Scenic Trail | USFS |
| Gate | Mobile Weather Unit | IR Isolated Heat Source | Uncontrolled Fire Edge | IR Intense Heat |
| | | U.S. Highway | Completed Dozer Line | IR Scattered Heat |
| | | State Highway | Completed Hand Line | Wildfire Daily Fire Perimeter |
| | | | Forest Boundary | Wilderness |
| | | | BLM | |

Approx 36,490 acres
 6/15/2019 2300 hrs

0 0.25 0.5 Miles
 0 0.250.5 Kilometers

SOUTHWEST AREA
INCIDENT MANAGEMENT TEAM

NAD 1983 UTM Zone 12N
 Prepared by: KGalt
 6/16/2019 0315 hrs



Woodbury
 AZ-TNF-000579
 06/16/2019 Day Ops
Operations Map
DIV G

- | | | | | |
|-------------------------|------------------------|-----------------------|-------------------|-------------------------------|
| Camp | Division Break | Trail | Completed Burnout | State |
| Dip Site | Uncontrolled Fire Edge | Planned Fire Line | USFS | IR Intense Heat |
| Drop Point | Completed Dozer Line | Aerial Retardant Drop | IR Scattered Heat | Wildfire Daily Fire Perimeter |
| IR Isolated Heat Source | Completed Hand Line | Forest Boundary | Wilderness | |
| U.S. Highway | Road as Completed Line | BLM | Private | |
| Road | | | | |

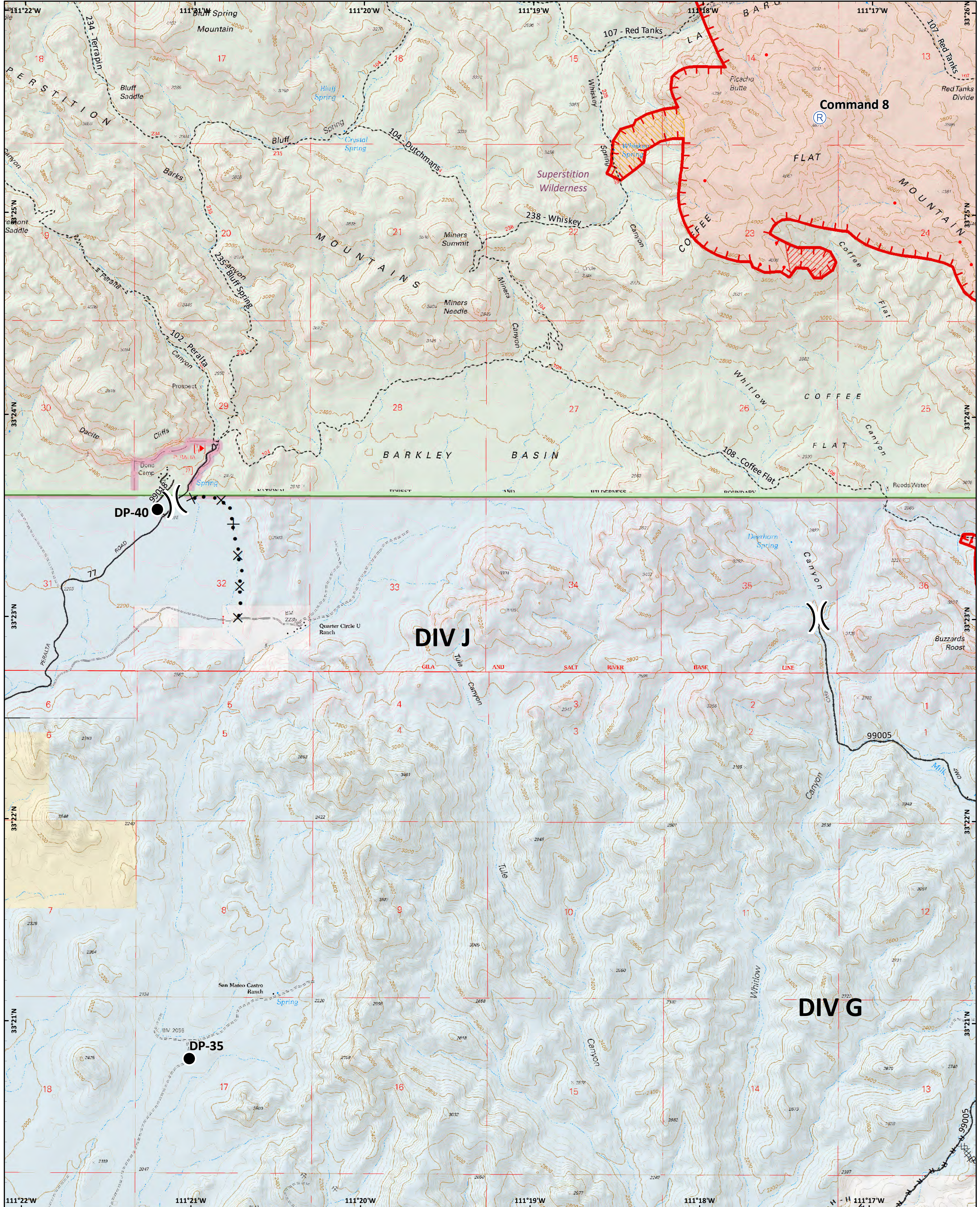
Approx 36,490 acres
 6/15/2019 2300 hrs

0 0.25 0.5 Miles

0 0.25 0.5 Kilometers



NAD 1983 UTM Zone 12N
 Prepared by: KGalt
 6/16/2019 03:15 hrs



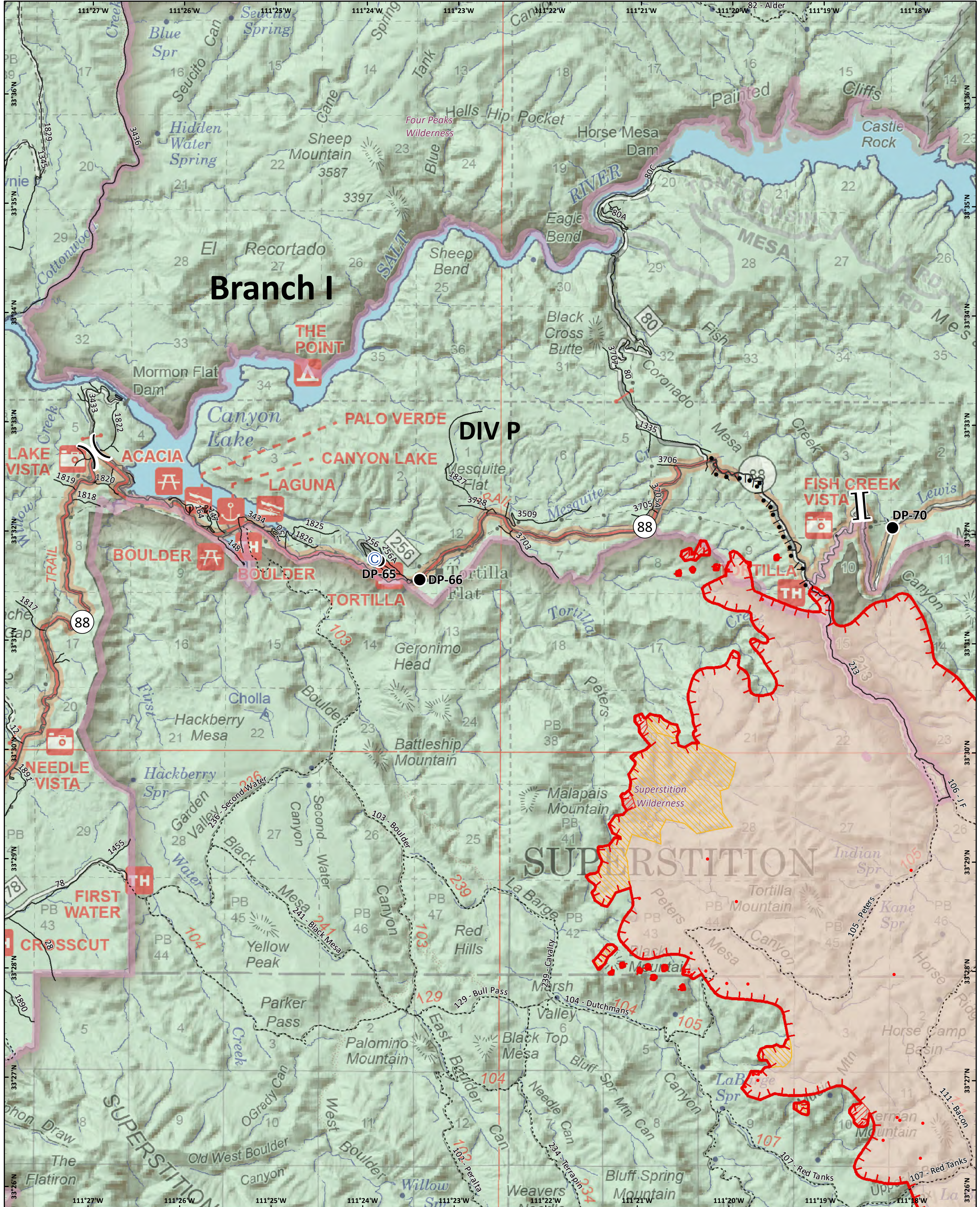
Woodbury
 AZ-TNF-000579
 06/16/2019 Day Ops
Operations Map
DIV J

- Drop Point
- Ⓡ Repeater
- ⎓ Division Break
- ⊗ Completed Dozer Line
- H - Completed Hand Line
- ⊗ Proposed Dozer Line
- IR Isolated Heat Source
- Road
- ⋯ Trail
- ⬮ Uncontrolled Fire Edge
- ⊗ Wilderness
- ⬮ BLM
- ⬮ Private
- ⬮ State
- ⬮ USFS
- ⊗ IR Intense Heat
- ⊗ IR Scattered Heat
- ⬮ Forest Boundary
- ⬮ Wildfire Daily Fire Perimeter

Approx 36,490 acres
 6/15/2019 2300 hrs

0 0.25 0.5 Miles
 0 0.25 0.5 Kilometers





Woodbury
 AZ-TNF-000579
 06/16/2019 Day Ops
Operations Map
DIV P

- Camp
- Drop Point
- Division Break
- Branch Break
- Trail
- Uncontrolled Fire Edge
- Completed Burnout
- Forest Boundary
- Wilderness
- USFS
- IR Isolated Heat Source
- State Highway
- Road
- IR Intense Heat
- IR Scattered Heat
- Wildfire Daily Fire Perimeter

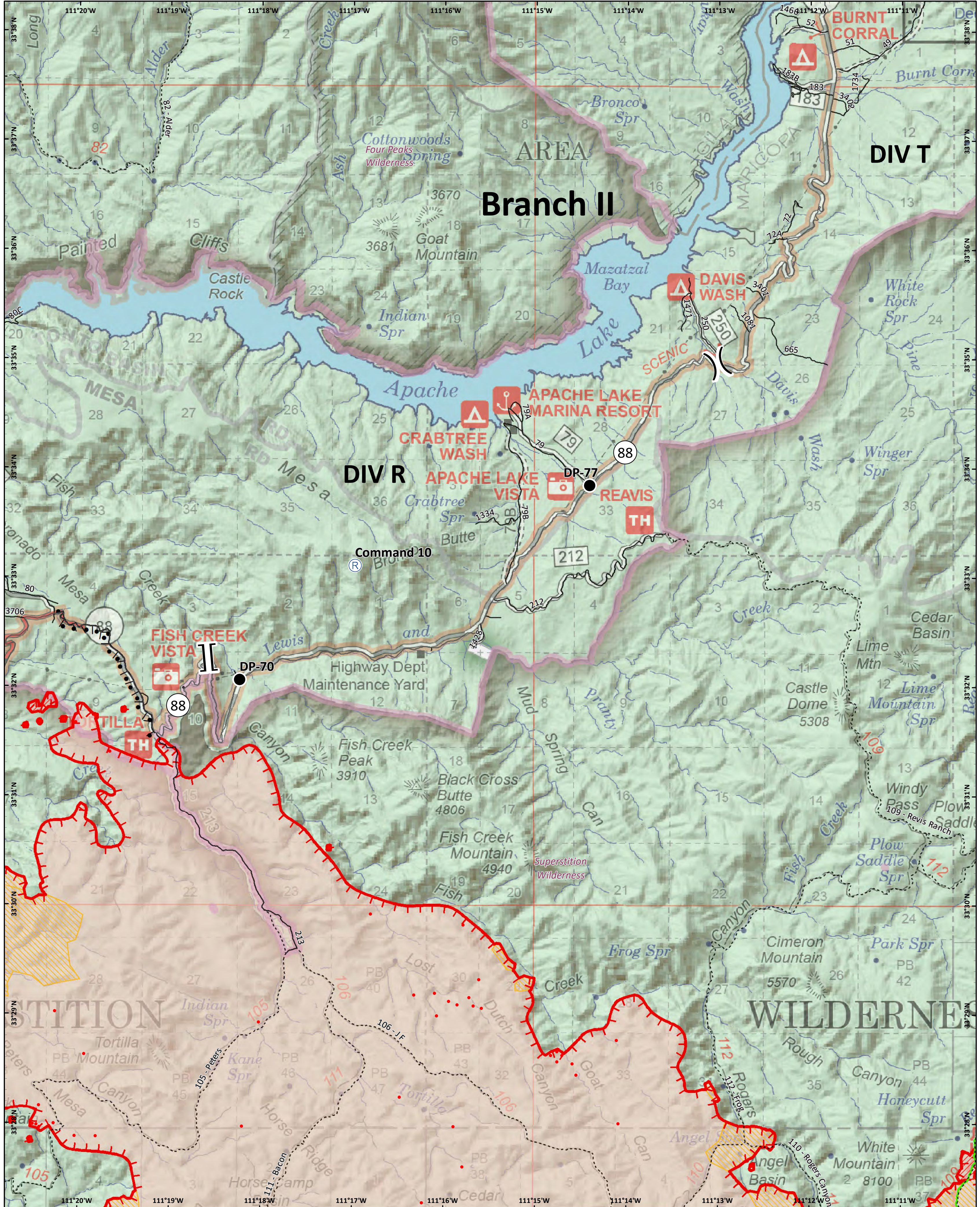
Approx 36,490 acres
 6/15/2019 2300 hrs

0 0.25 0.5 Miles

0 0.25 0.5 Kilometers



NAD 1983 UTM Zone 12N
 Prepared by: KGalt
 6/16/2019 03:15 hrs



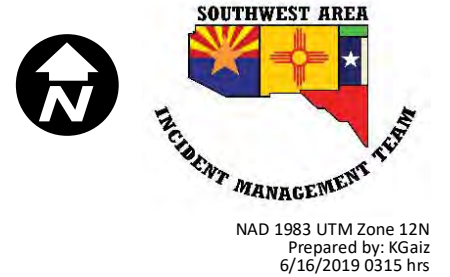
Woodbury
 AZ-TNF-000579
 06/16/2019 Day Ops
Operations Map
DIV R

- Drop Point
- Ⓡ Repeater
-)) Division Break
- [[Branch Break
- Trail
- Arizona National Scenic Trail
- Uncontrolled Fire Edge
- IR Isolated Heat Source
- State Highway
- Road
- IR Intense Heat
- IR Scattered Heat
- Wildfire Daily Fire Perimeter
- Completed Burnout
- Forest Boundary
- Wilderness
- Private
- USFS

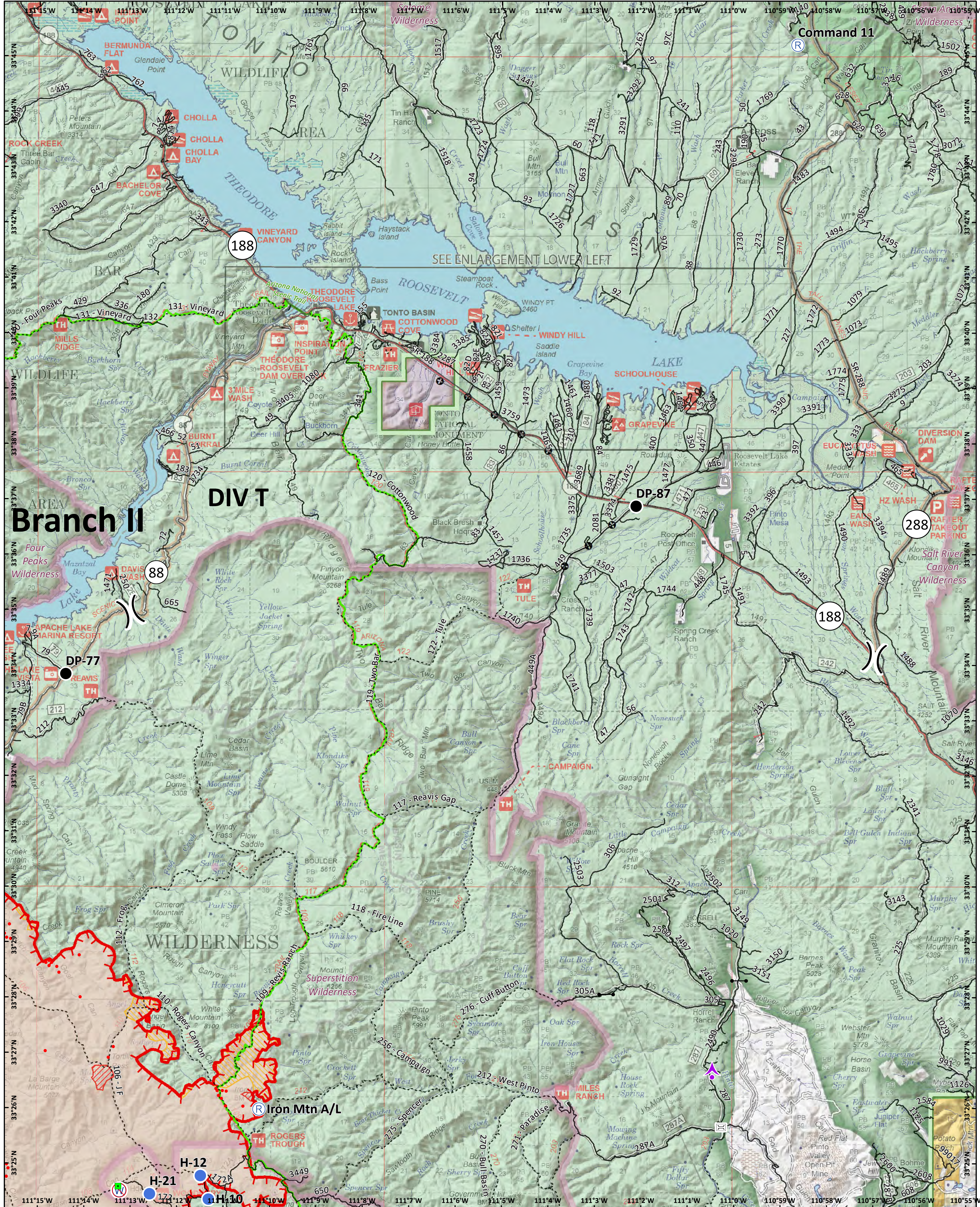
Approx 36,490 acres
 6/15/2019 2300 hrs

0 0.25 0.5 Miles

0 0.25 0.5 Kilometers



NAD 1983 UTM Zone 12N
 Prepared by: KGaiz
 6/16/2019 03:15 hrs



Woodbury
 AZ-TNF-000579
 06/16/2019 Day Ops
Operations Map
DIV T

- Aerial Hazard
- Gate
- Restricted Water Source
- IR Isolated Heat Source
- State Highway
- Forest Boundary
- Wilderness
- BLM
- BR
- NPS
- Private
- USFS
- IR Intense Heat
- Bridge
- Helispot
- Landmark
- Division Break
- Uncontrolled Fire Edge
- Other
- Drop Point
- Repeater
- Wildfire Daily Fire Perimeter
- IR Scattered Heat
- Arizona National Scenic Trail
- Wildfire

Approx 36,490 acres
 6/15/2019 2300 hrs
 0 0.250.5 Miles
 0 0.28.5 Kilometers

SOUTHWEST AREA
INCIDENT MANAGEMENT TEAM
 NAD 1983 UTM Zone 12N
 Prepared by: KGalt
 6/16/2019 0315 hrs