

Branch I

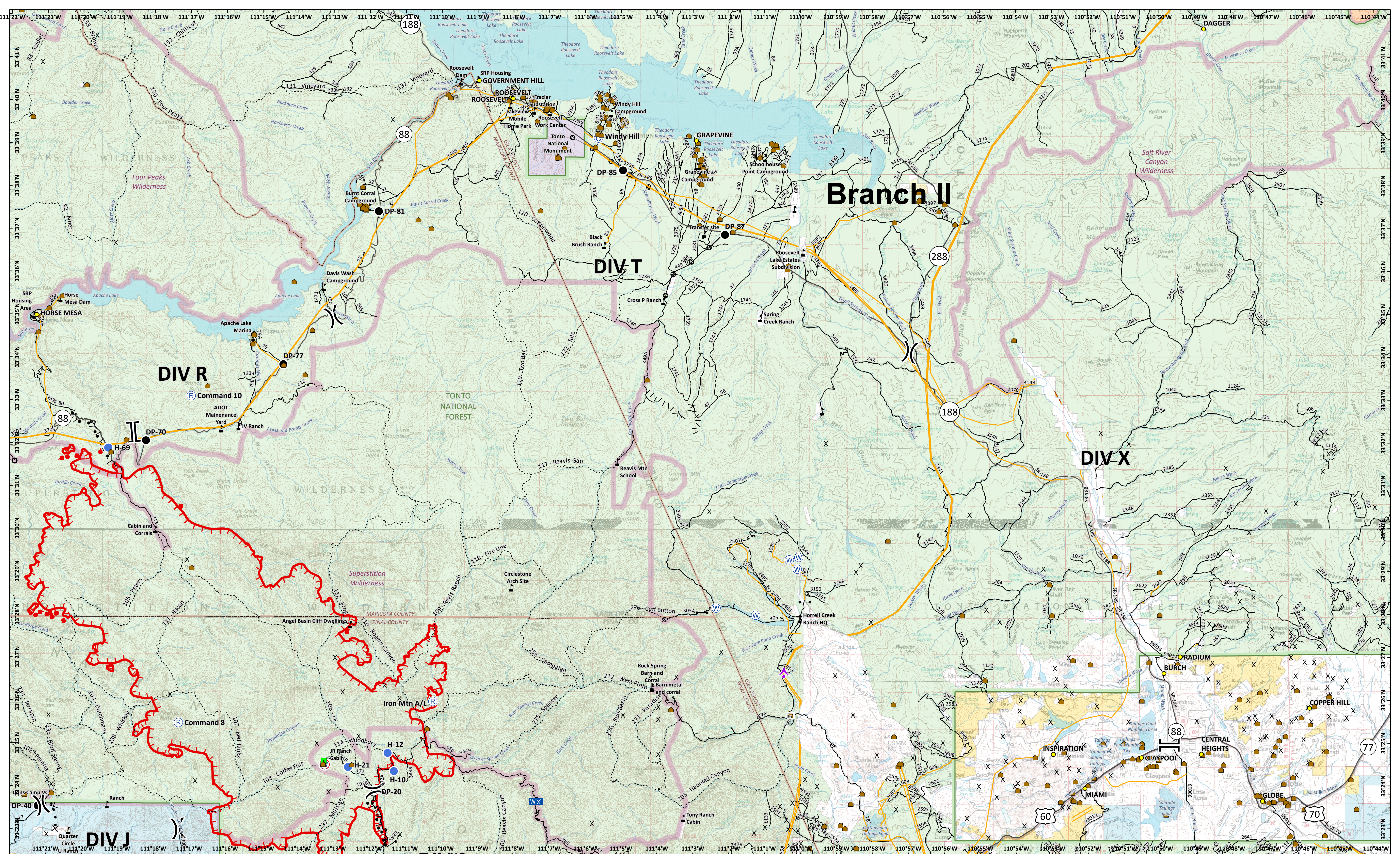
Woodbury Fire
 AZ-TNF-000579
 6/17/19 Day
 Branch I
Structure Protection

Cities	Camp	Fence - Cut/Damaged	Landmark	Value at Risk	Pinal County Structure Footprint	Powerline	Uncontrolled Fire Edge	Proposed Dozer Line	County	Wilderness
Towns	Culvert	Unimproved Landing Area	Repeater	Division Break	Mines	Telephone Line	Completed Burnout	Forest Boundary	Waterbody	Stream
Structure	Drop Point	Helispot	Restricted Water Source	Branch Break		U.S. Highway	State Highway	Road		
						Trail				

Approx 36,490 acres
 6/15/19 2300 hrs

0 1 2 Miles
 0 1 2 Kilometers

NAD 1983 UTM Zone 12N
 Prepared by: bsdgmn
 6/16/2019 8:43 hrs



Branch II

Woodbury Fire
 AZ-TNF-000579
 6/17/19 Day
 Branch II
Structure Protection

Cities	Aerial Hazard	Drop Point	Landmark	Restricted Water Source	Pinal County Structure Footprint	Powerline	U.S. Highway	Uncontrolled Fire Edge	Proposed Dozer Line	County	Wilderness
Towns	Bridge	Fence - Cut/Damaged	Mobile Weather Unit	Value at Risk	Mines	Telephone Line	State Highway	Proposed Burnout	Other	Forest Boundary	Waterbody
Structure	Camp	Gate	Repeater	Division Break		Road	Trail	Completed Burnout	Other	Stream	
Culvert	Helispot	Water Source									

Approx 36,490 acres
 6/15/19 2300 hrs

0 1 2 Miles
 0 1 2 Kilometers

NAD 1983 UTM Zone 12N
 Prepared by: bjdgn
 6/16/2015 8:43 hrs