

**Woodbury Fire**  
 AZ-TNF-000579  
 6/19/2019 Day

**Incident Action Plan**  
**Index Map**

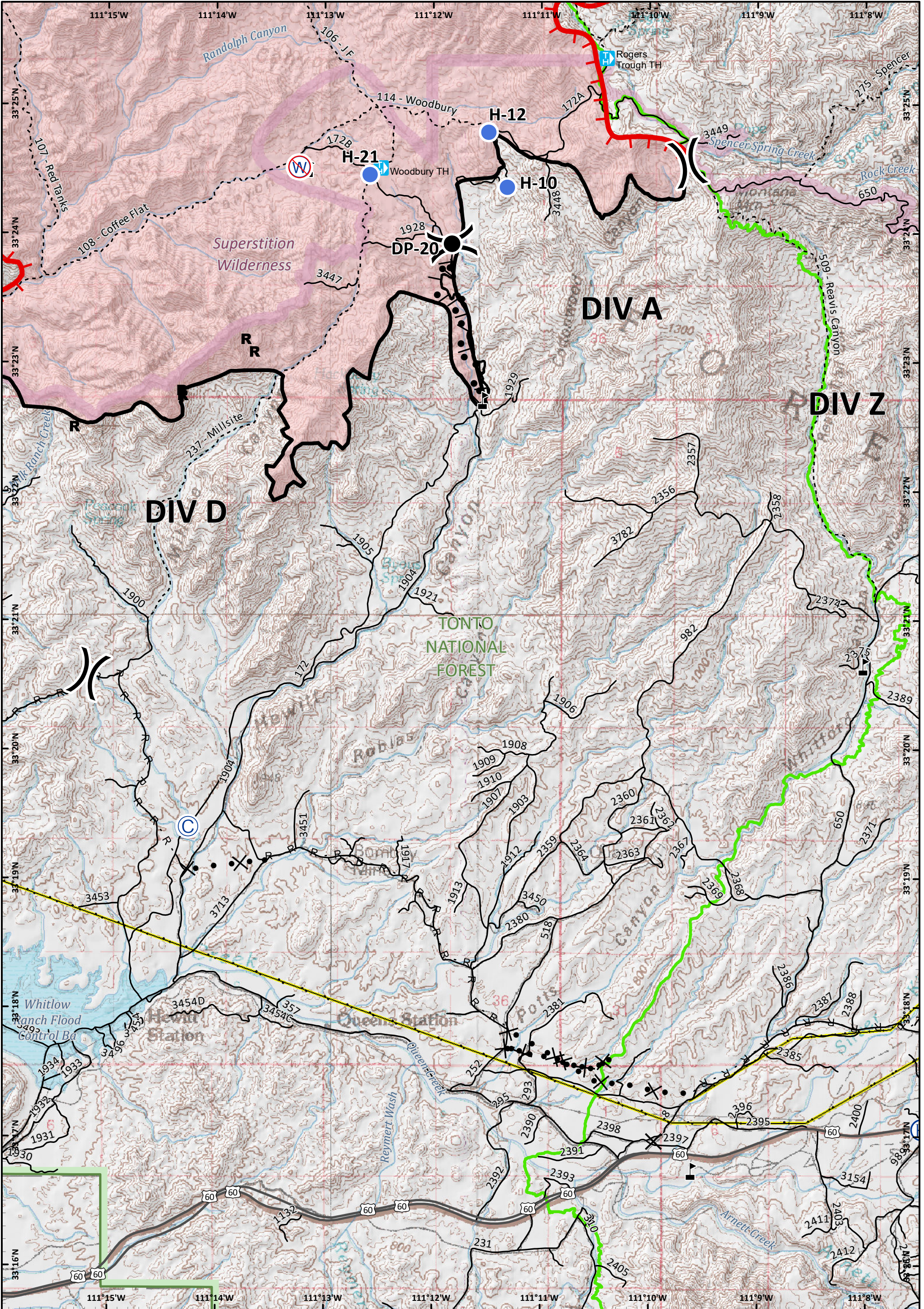
- |            |            |                         |                     |
|------------|------------|-------------------------|---------------------|
| Pump       | Dip Site   | Unimproved Landing Area | Mobile Weather Unit |
| Water Tank | Drop Point | Helispot                | Repeater            |
| Grid Index | Gate       | Incident Command Post   | Resource Location   |
| Bridge     | Helibase   | Landmark                | Staging Area        |
| Camp       | Lookout    | Restricted Water Source |                     |
| Culvert    |            |                         |                     |

- |                            |                               |                        |                                  |
|----------------------------|-------------------------------|------------------------|----------------------------------|
| Division Break             | Branch Break                  | Road                   | Access or Improved Road          |
| Trail                      | Arizona National Scenic Trail | Uncontrolled Fire Edge | Completed Burnout                |
| Completed Line             | Completed Dozer Line          | Proposed Dozer Line    | Fire Break Planned or Incomplete |
| Completed Hand Line        | Completed Dozer Line          | Planned Fire Line      | Planned Secondary Line           |
| R - Road as Completed Line | Air Tanker Retardant          |                        |                                  |

Approx 40,557 acres  
 6/17/19 2220 hrs

Miles 0 1 2  
 Kilometers 0 1 2

NAD 1983 UTM Zone 12N  
 Prepared by Admin  
 6/18/2019 2033 hrs

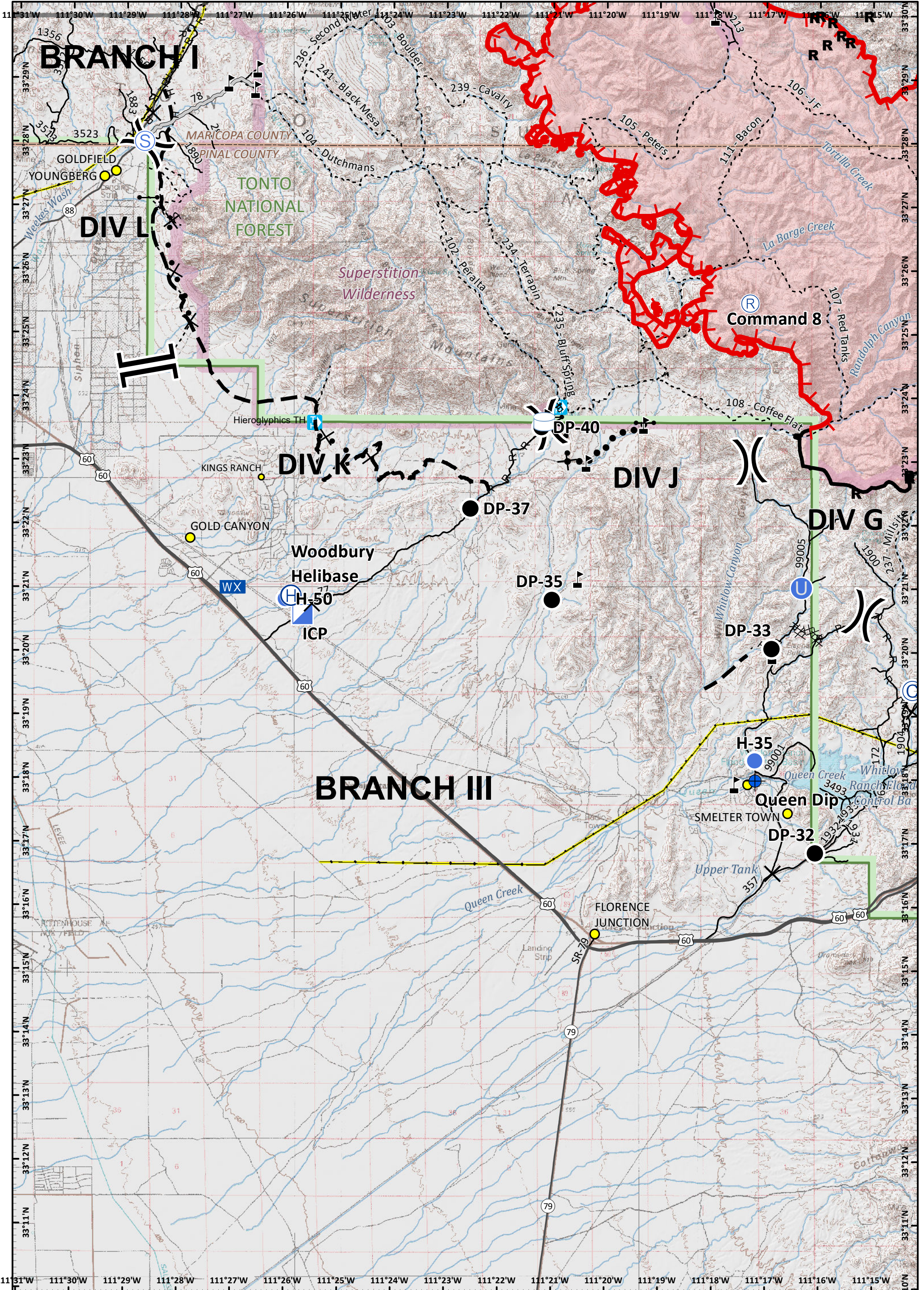


<b>Incident Action Plan</b>			Camp		Helispot		Value at Risk		Completed Line		Road
<b>Page: 1</b>			Closure		Repeater		Division Break		R - Road as Completed Line		Arizona National Scenic Trail
<b>DIV A/D</b>			Drop Point		Resource Location		Completed Burnout		County		Forest Boundary
<b>Woodbury Fire</b>			Helibase		Restricted Water Source		Proposed Dozer Line		Wilderness		Transmission Lines
AZ-TNF-000579			Uncontrolled Fire Edge		Trailhead		Waterbody		Stream		U.S. Highway
6/19/2019 Day											

Approx 40,557 acres  
6/17/19 2220 hrs  
0 0.45 0.9  
Miles

SOUTHWEST AREA INCIDENT MANAGEMENT TEAM

NAD 1983 UTM Zone 12N  
Prepared by: Admin  
6/18/2019 2249 hrs



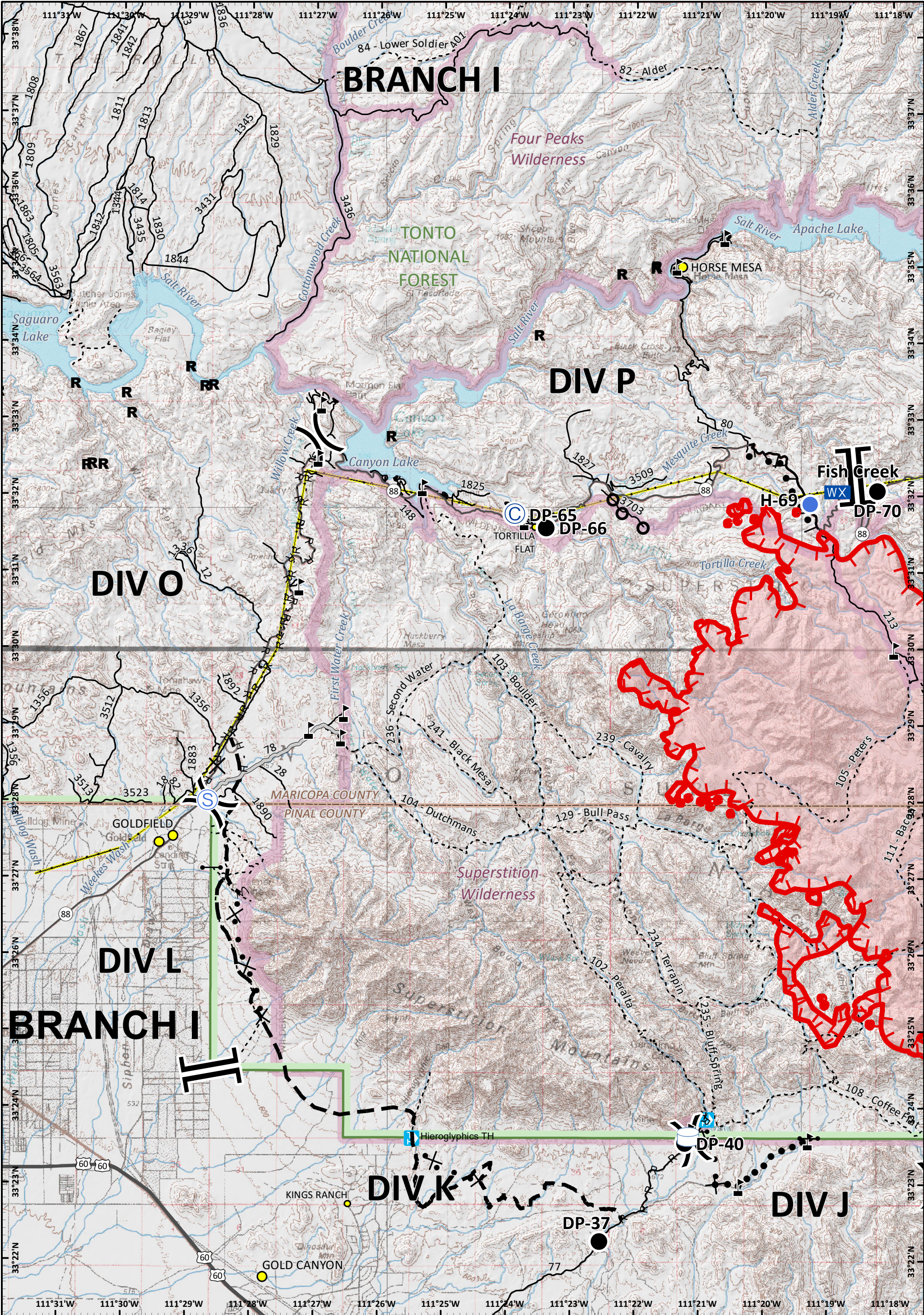
**Incident Action Plan**  
 Page: 2  
 DIV G/J/K  
**Woodbury Fire**  
 AZ-TNF-000579  
 6/19/2019 Day

	Water Tank		Drop Point		Helispot		Resource Location		Completed Dozer Line
	Camp		Gate		Incident Command Post		Staging Area		Branch Break
	Closure		Helibase		Mobile Weather Unit		Value at Risk		North Arrow
	Dip Site		Unimproved Landing Area		Repeater		Scale bar		SOUTHWEST AREA INCIDENT MANAGEMENT TEAM

Approx 40,557 acres  
 6/17/19 2220 hrs  
 0.95 1.9 Miles

Uncontrolled Fire Edge  
 Completed Line

NAD 1983 UTM Zone 12N  
 Prepared by: Admin  
 6/18/2019 2249 hrs



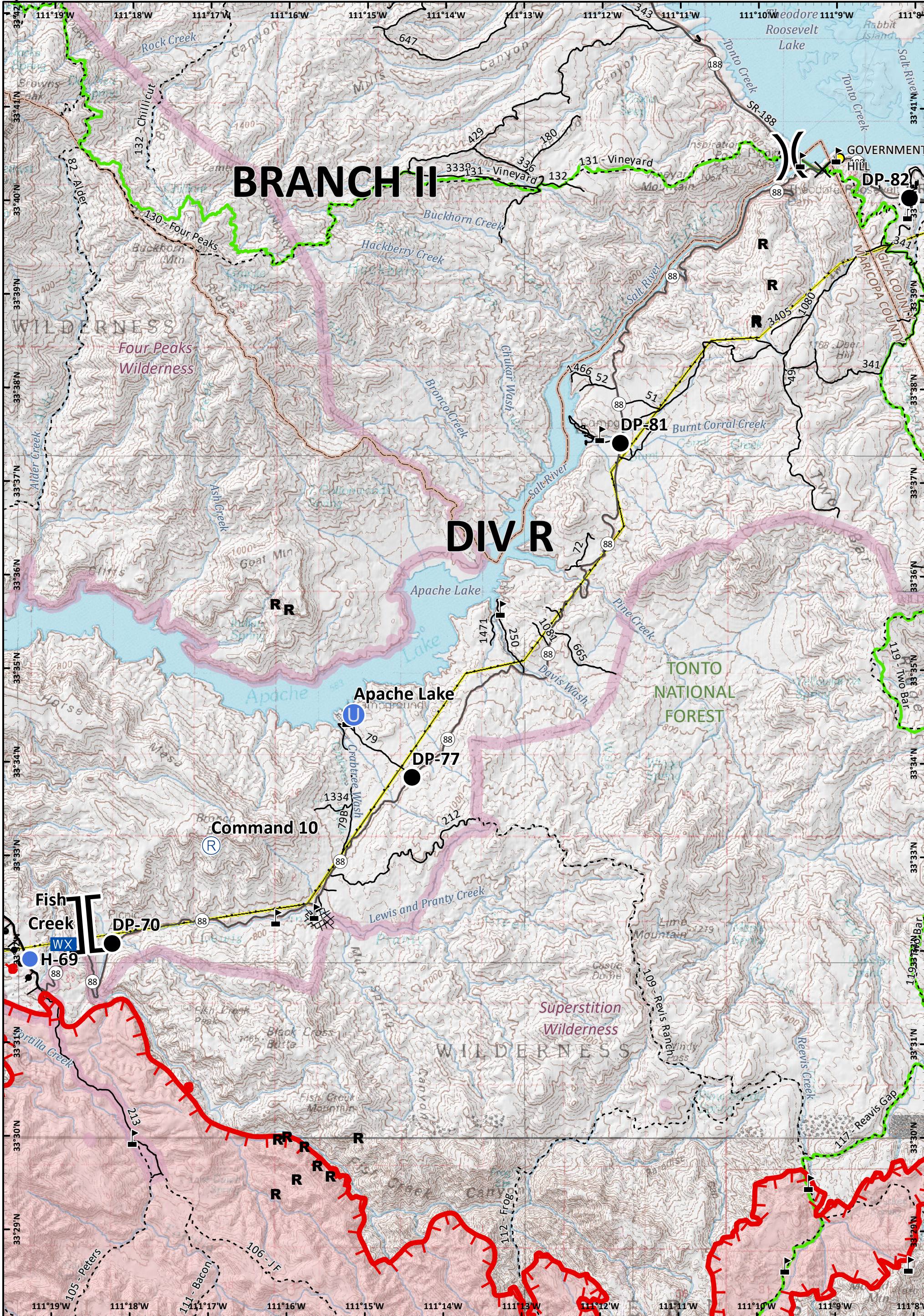
**Incident Action Plan**  
 Page: 3  
 DIV L/O/P  
**Woodbury Fire**  
 AZ-TNF-000579  
 6/19/2019 Day

	Water Tank		Gate		Value at Risk		R - Road as Completed Line		Cities		Transmission Lines
	Camp		Helispot		Division Break		Access or Improved Road		Mobile Weather Unit		Waterbody
	Closure		Mobile Weather Unit		Branch Break		Completed Burnout		Trailhead		Stream
	Culvert		Resource Location		Proposed Dozer Line		U.S. Highway		State Highway		Road
	Drop Point		Staging Area		Planned Fire Line		Trail		County		Fire Break Planned or Incomplete
					Completed Hand Line		Forest Boundary		Wilderness		

Approx 40,557 acres  
 6/17/19 2220 hrs  
 0 0.8 1.6  
 Miles

**SOUTHWEST AREA INCIDENT MANAGEMENT TEAM**

NAD 1983 UTM Zone 12N  
 Prepared by Admin  
 6/18/2019 2249 hrs



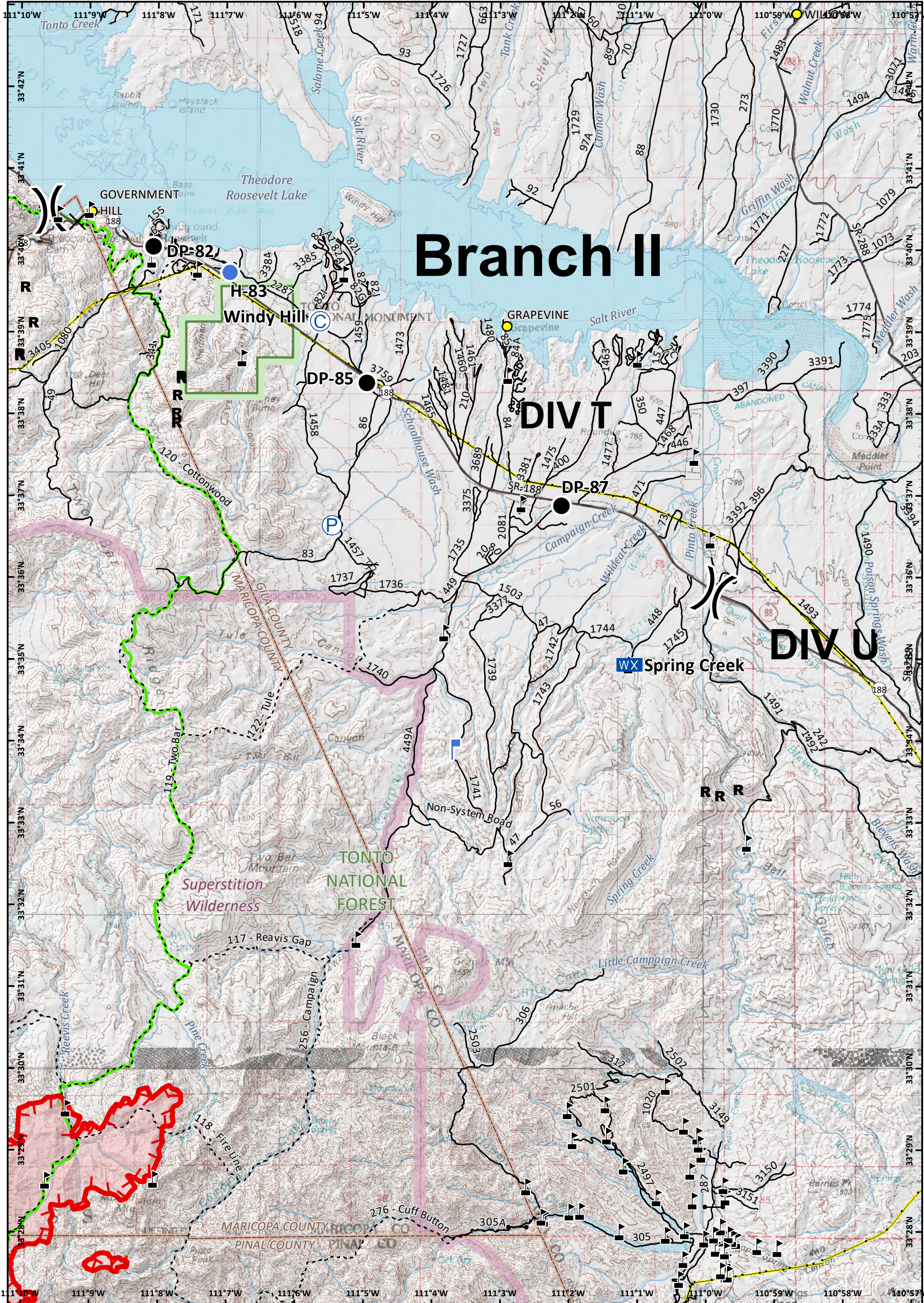
**Incident Action Plan**  
 Page: 4  
 DIV R  
**Woodbury Fire**  
 AZ-TNF-000579  
 6/19/2019 Day

Closure	Mobile Weather Unit	Division Break	Completed Dozer Line	Trail
Drop Point	Repeater	Branch Break	Completed Hand Line	Arizona National Scenic Trail
Unimproved Landing Area	Resource Location	Completed Burnout	Cities	County
Helispot	Value at Risk	Uncontrolled Fire Edge	Towns	Forest Boundary
			State Highway	Wilderness
			Road	Transmission Lines
				Waterbody
				Stream

Approx 40,557 acres  
 6/17/19 2220 hrs  
 6/18/2019 2249 hrs

Miles 0 0.65 1.3





# Branch II

**DIV T**

**DIV U**

**Incident Action Plan**  
 Page: 5  
 DIV T  
**Woodbury Fire**  
 AZ-TNF-000579  
 6/19/2019 Day

- Pump
- Camp
- Closure
- Drop Point
- Gate
- Hellspot
- Lookout
- Mobile Weather Unit

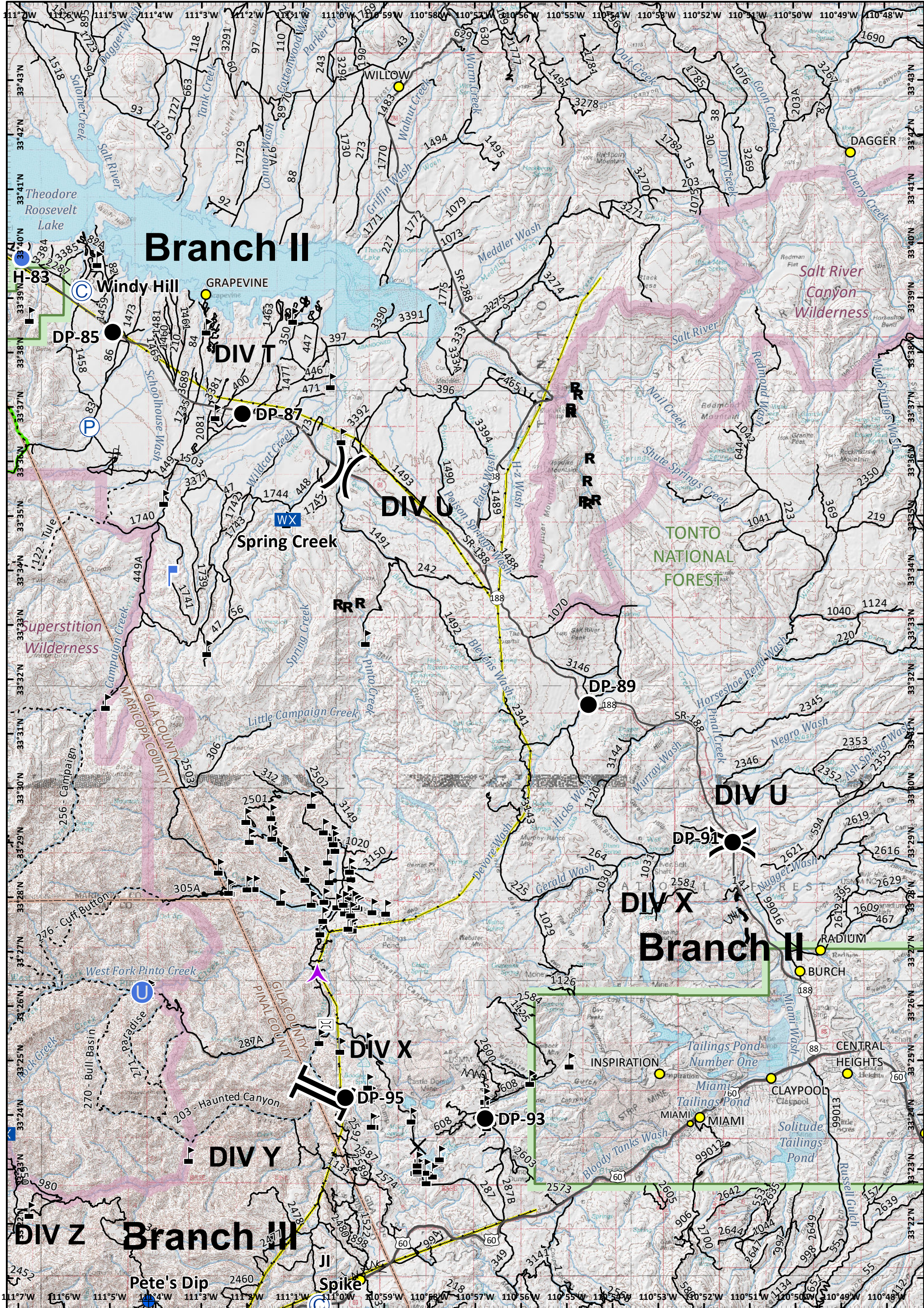
- Resource Location
- Value at Risk
- Division Break
- Uncontrolled Fire Edge
- Completed Dozer Line
- Cities
- Towns
- State Highway
- Road
- Trail
- Arizona National Scenic Trail

- County
- Wilderness
- Transmission Lines
- Waterbody
- Stream

Approx 40,557 acres  
 6/17/19 2220 hrs

0 0.75 1.5 Miles

NAD 1983 UTM Zone 12N  
 Prepared by: Admin  
 6/18/2019 2249 hrs



**Incident Action Plan**

Page: 6

DIV U

**Woodbury Fire**

AZ-TNF-000579

6/19/2019 Day

- Pump
- Aerial Hazard
- Bridge
- Camp
- Closure
- Dip Site
- Drop Point
- Gate
- Unimproved Landing Area
- Helispot
- Lookout
- Mobile Weather Unit
- Resource Location
- Value at Risk
- Division Break

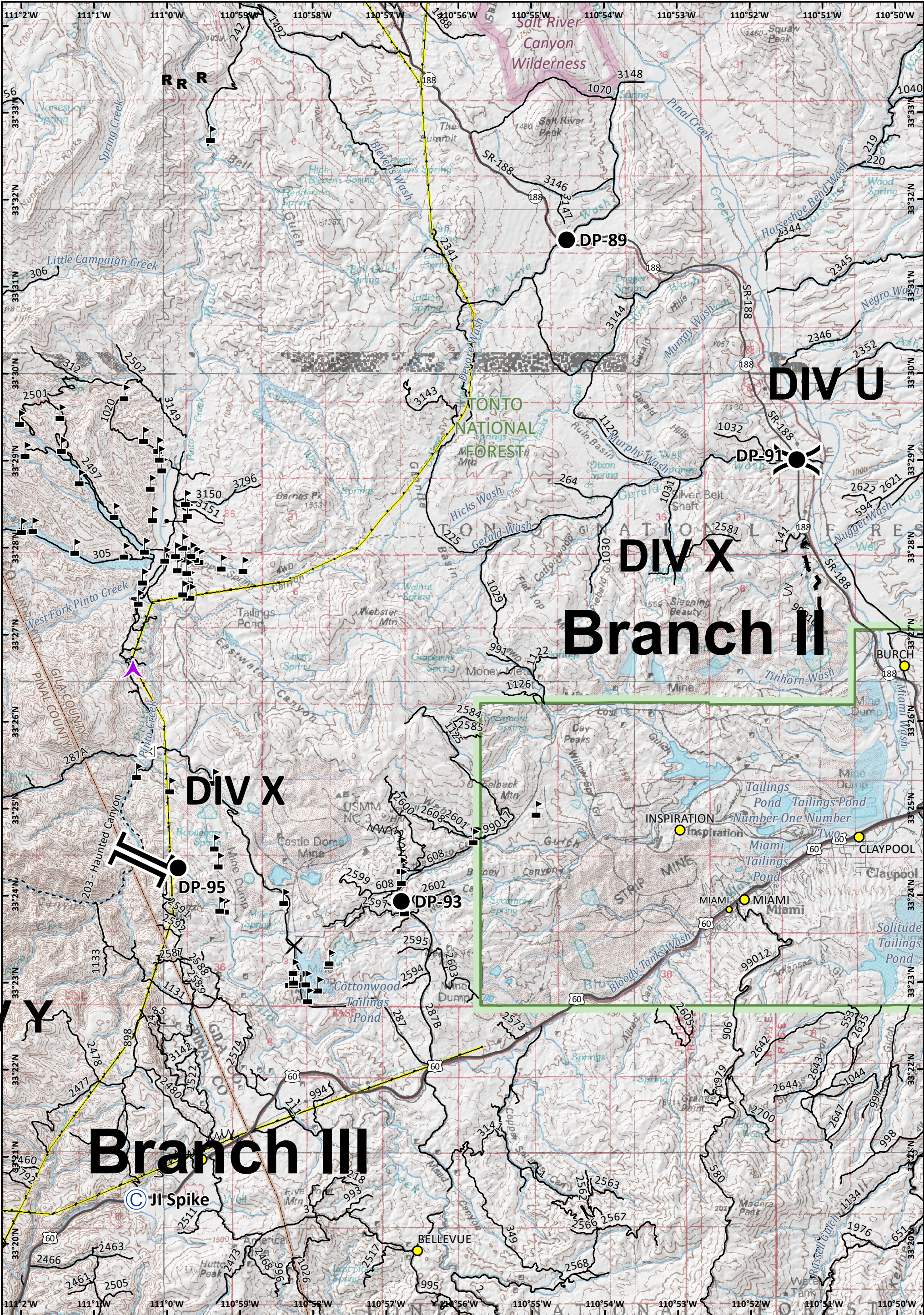
- H - Completed Hand Line
- Fire Break Planned or Incomplete
- Planned Fire Line
- Cities
- Towns
- U.S. Highway
- State Highway
- Road
- Trail
- Arizona National Scenic Trail
- County
- Forest Boundary
- Wilderness
- North Arrow

Approx 40,557 acres  
6/17/19 2220 hrs

0 1 2  
Miles

SOUTHWEST AREA  
INCIDENT MANAGEMENT TEAM

NAD 1983 UTM Zone 12N  
Prepared by: Admin  
6/18/2019 2249 hrs



**Incident Action Plan**  
 Page: 8  
 DIV X  
**Woodbury Fire**  
 AZ-TNF-000579  
 6/19/2019 Day

- Aerial Hazard
- Drop Point
- Gate
- Resource Location
- Value at Risk
- Camp
- Closure
- Bridge
- Division Break
- Branch Break
- Completed Hand Line

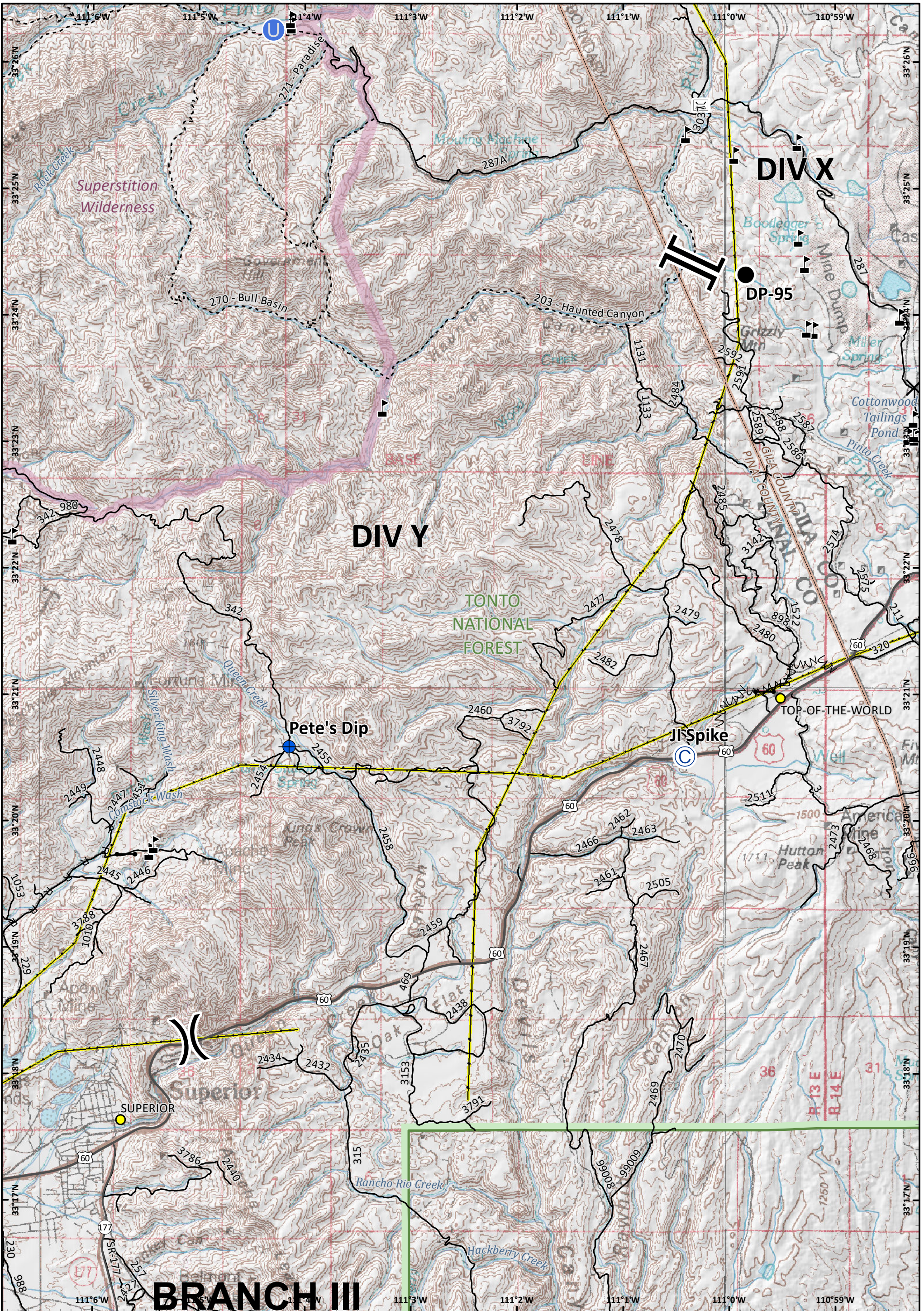
- Fire Break Planned or Incomplete
- Planned Fire Line
- Cities
- Towns
- U.S. Highway
- State Highway
- Road
- Trail

- County
- Forest Boundary
- Wilderness
- Transmission Lines
- Waterbody
- Stream

Approx 40,557 acres  
 6/17/19 2220 hrs  
 0 0.7 1.4  
 Miles

SOUTHWEST AREA  
 INCIDENT MANAGEMENT TEAM  
NAD 1983 UTM Zone 12N  
 Prepared by: Admin  
 6/18/2019 2249 hrs





**Incident Action Plan**

Page: 7  
DIV Y

**Woodbury Fire**  
AZ-TNF-000579  
6/19/2019 Day

- Bridge
- Drop Point
- Camp
- Gate
- Closure
- Unimproved Landing Area
- Dip Site
- Value at Risk

Division Break

Branch Break

- Fire Break Planned or Incomplete
- U.S. Highway
- State Highway
- Road
- Trail
- County
- Forest Boundary

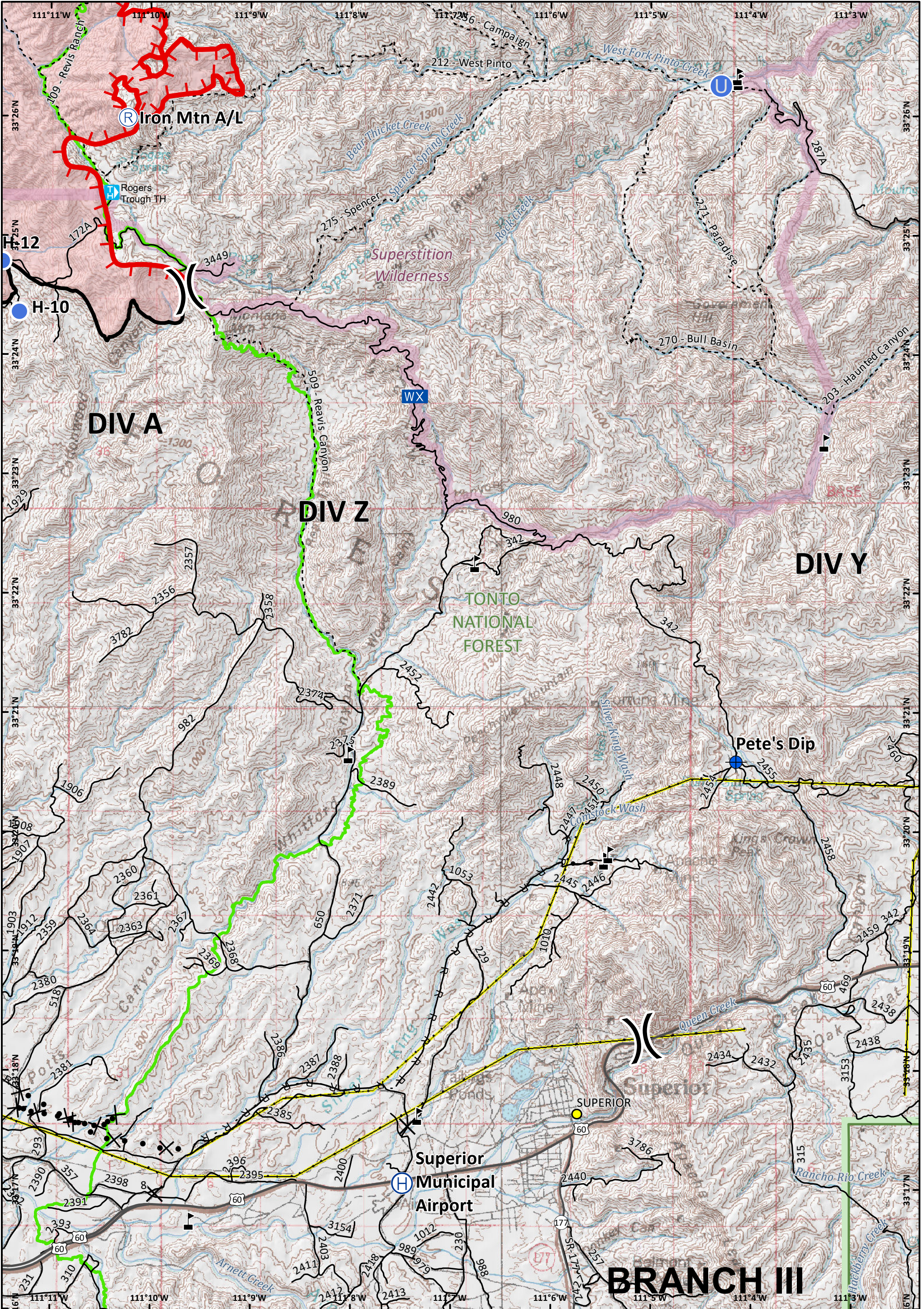
- Wilderness
- Transmission Lines
- Waterbody
- Stream



Approx 40,557 acres  
6/17/19 2220 hrs  
0.45

Miles 0 0.45 0.9

NAD 1983 UTM Zone 12N  
Prepared by: Admin  
6/18/2019 2249 hrs



<b>Incident Action Plan</b>		X Closure		U Unimproved Landing Area		▲ Value at Risk		— Completed Line		— Road	
Page: 9		● Dip Site		● Helispot		) ( Division Break		R - Road as Completed Line		- - - Trail	
DIV Z		— Gate		WX Mobile Weather Unit		X Proposed Dozer Line		● Cities		— Arizona National Scenic Trail	
<b>Woodbury Fire</b>		H Helibase		R Repeater		— Uncontrolled Fire Edge		— U.S. Highway		— County	
AZ-TNF-000579								— State Highway		— Forest Boundary	
6/19/2019 Day										— Wilderness	
										— Transmission Lines	
										— Waterbody	
										— Stream	

**Approx 40,557 acres**  
6/17/19 2220 hrs

0 0.5 1  
Miles

SOUTH WEST AREA INCIDENT MANAGEMENT TEAM

NAD 1983 UTM Zone 12N  
Prepared by Admin  
6/18/2019 2249 hrs