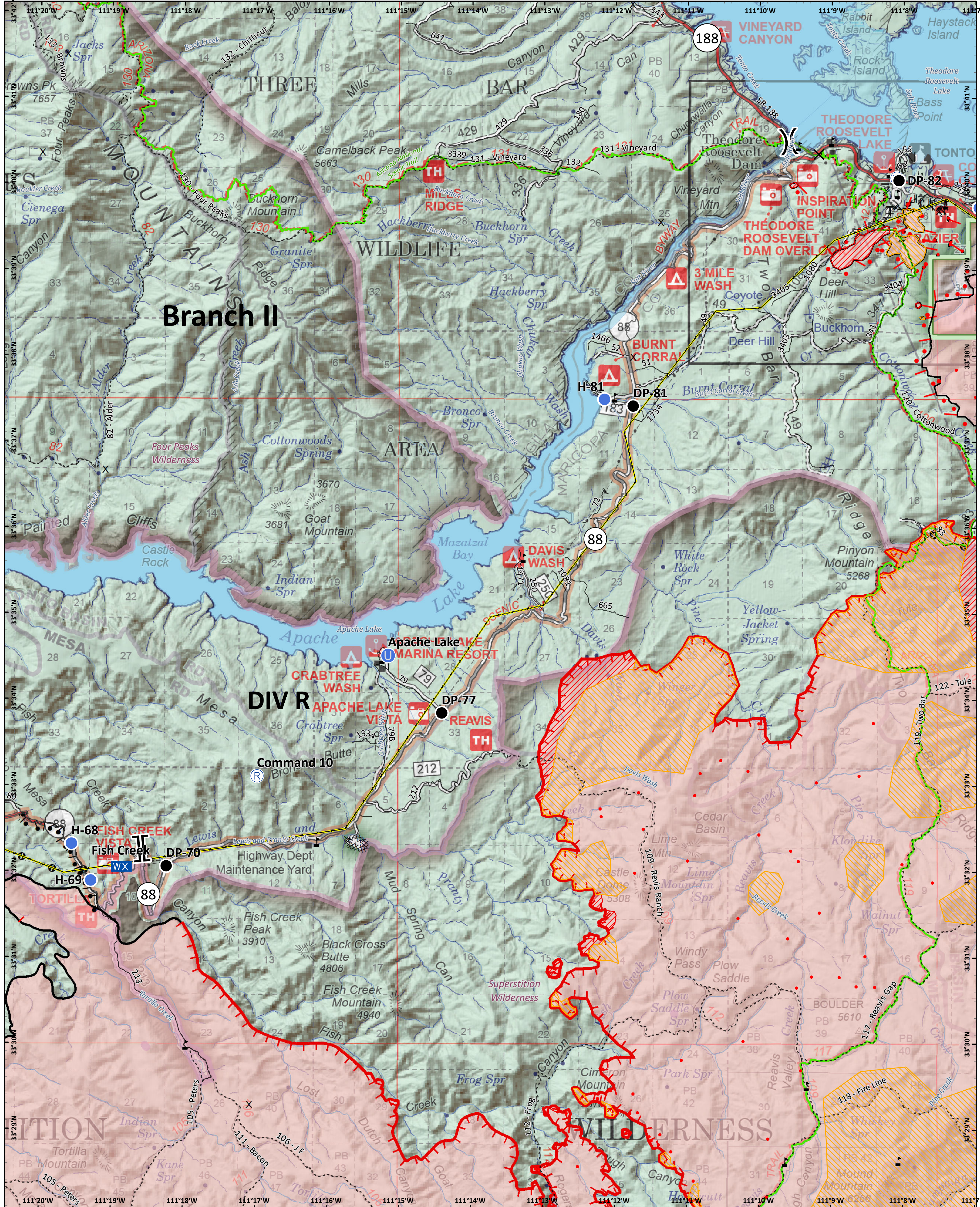


# Branch II



**Woodbury**  
 AZ-TNF-000579  
 06/23/2019 Day  
**Operations**  
**DIV R**

- |                           |                       |                           |                        |                                 |                          |                                 |
|---------------------------|-----------------------|---------------------------|------------------------|---------------------------------|--------------------------|---------------------------------|
| ✕ Closure                 | ● Helispot            | ⊕ Water Source            | ⌈ Branch Break         | — Road                          | — Trail                  | — Active Burnout                |
| ● Drop Point              | ⊕ Mobile Weather Unit | ⊕ Value at Risk           | ⌈ Completed Line       | — Arizona National Scenic Trail | — Uncontrolled Fire Edge | — Completed Burnout             |
| ⊕ Unimproved Landing Area | ⊕ Repeater            | ⊕ Division Break          | ⊕ Completed Dozer Line | — Completed Hand Line           | — Forest Boundary        | — Wilderness                    |
|                           |                       | ⊕ IR Isolated Heat Source | ⊕ IR Intense Heat      | — Transmission Lines            | — Waterbody              | — Stream                        |
|                           |                       | ⊕ Mines                   | — State Highway        | — Proposed Burnout              | — Stream                 | — Wildfire Daily Fire Perimeter |

Approx 96,307 acres (IR)  
 6/22/19 2312 hrs

0 0.5 1 Kilometers

0 0.5 1 Miles

**SOUTHWEST AREA**  
**INCIDENT MANAGEMENT TEAM**

NAD 1983 UTM Zone 12N  
 Prepared by: Billsilva  
 6/23/2019 0527 hrs