

Branch II

DIV R

Woodbury
 AZ-TNF-000579
 06/24/2019 Day
Operations
DIV R

- | | | | | | |
|---------------------------|-----------------------|---------------------------|---------------------------------|--------------------------|---------------------------------|
| ✕ Closure | ● Helispot | ⊕ Water Source | — Transmission Lines | H - Completed Hand Line | ▭ Wildfire Daily Fire Perimeter |
| ● Drop Point | ⊕ Mobile Weather Unit | ⚠ Value at Risk | — State Highway | Proposed Burnout | |
| ⊕ Unimproved Landing Area | ⊕ Repair Point | ⊕ Division Break | — Trail | — Completed Burnout | |
| ⊕ Repeater | ⊕ Water Tank | ⊕ IR Isolated Heat Source | — Arizona National Scenic Trail | — Uncontrolled Fire Edge | |
| | | ⊕ IR Scattered Heat | — Completed Line | — Completed Dozer Line | |
| | | ⊕ IR Intense Heat | — Forest Boundary | | |
| | | | — Wilderness | | |
| | | | — Waterbody | | |
| | | | — Stream | | |

Approx 96,307 acres (IR)
 6/23/19 2248 hrs

0 0.5 1 Miles
 0 0.5 1 Kilometers

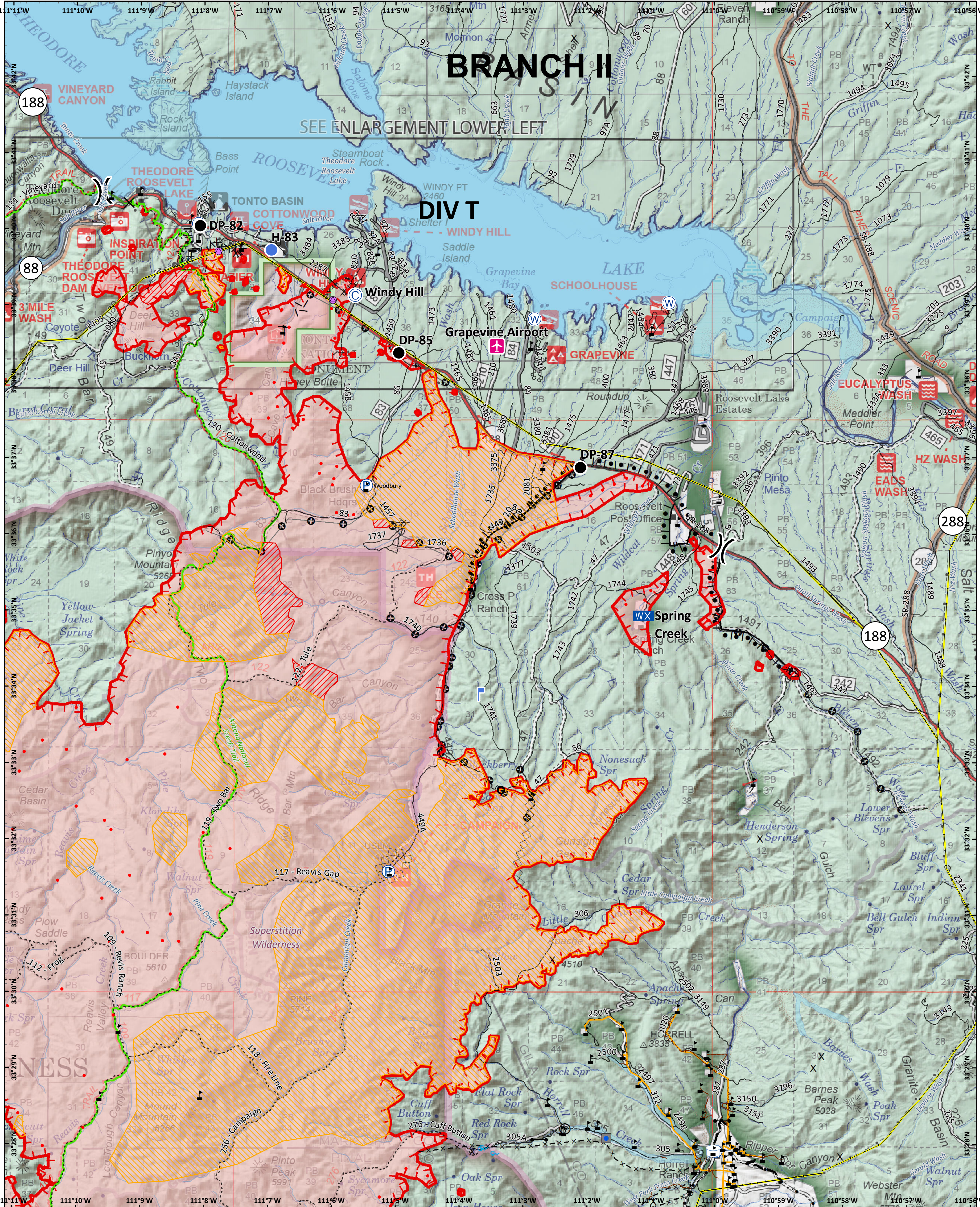
SOUTHWEST AREA
INCIDENT MANAGEMENT TEAM

NAD 1983 UTM Zone 12N
 Prepared by: billsilva
 6/24/2019 0503 hrs

BRANCH II

SEE ENLARGEMENT LOWER LEFT

DIV T



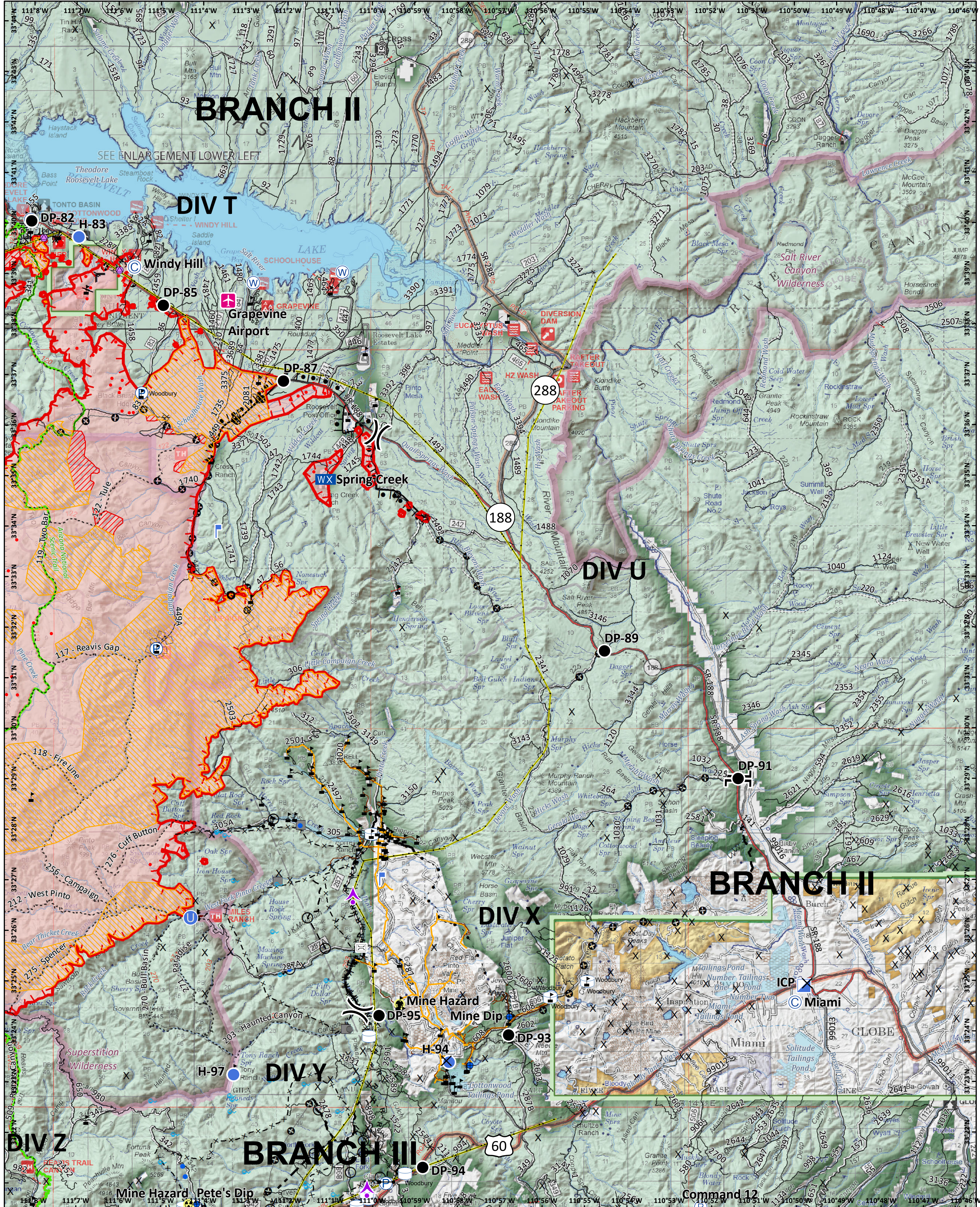
Woodbury
AZ-TNF-000579
06/24/2019 Day
Operations
DIV T

- | | | | | | | | | |
|---------------------|------------|---------------------|-----------------------------|----------------------------|-------------------------------|------------------------|-------------------------------|-------------------------------|
| Airstrip or Airport | Drop Point | Lookout | Value at Risk | Other Property | Road | Trail | Proposed Burnout | Wilderness |
| Camp | Gate | Mobile Weather Unit | Division Break | Water Tank | Arizona National Scenic Trail | Uncontrolled Fire Edge | Completed Burnout | Waterbody |
| Closure | Helispot | Repair Point | Completed Dozer Line | IR Isolated Heat Source | Completed Hand Line | Planned Fire Line | Air Tanker Retardant | Stream |
| Culvert | Pump | Water Source | Highlighted Manmade Feature | IR Scattered Heat | Road as Completed Line | Other | Wildfire Daily Fire Perimeter | Wildfire Daily Fire Perimeter |
| | | | Mines | PVM Temporary Access Roads | Transmission Lines | Forest Boundary | | |
| | | | Slate Highway | Mines | Slate Highway | | | |

Approx 96,307 acres (IR)
6/23/19 2248 hrs

0 0.5 1 Miles
0 0.5 1 Kilometers

NAD 1983 UTM Zone 12N
Prepared by: billsilva
6/24/2019 0503 hrs



Woodbury
 AZ-TNF-000579
 06/24/2019 Day
Operations
 DIV U

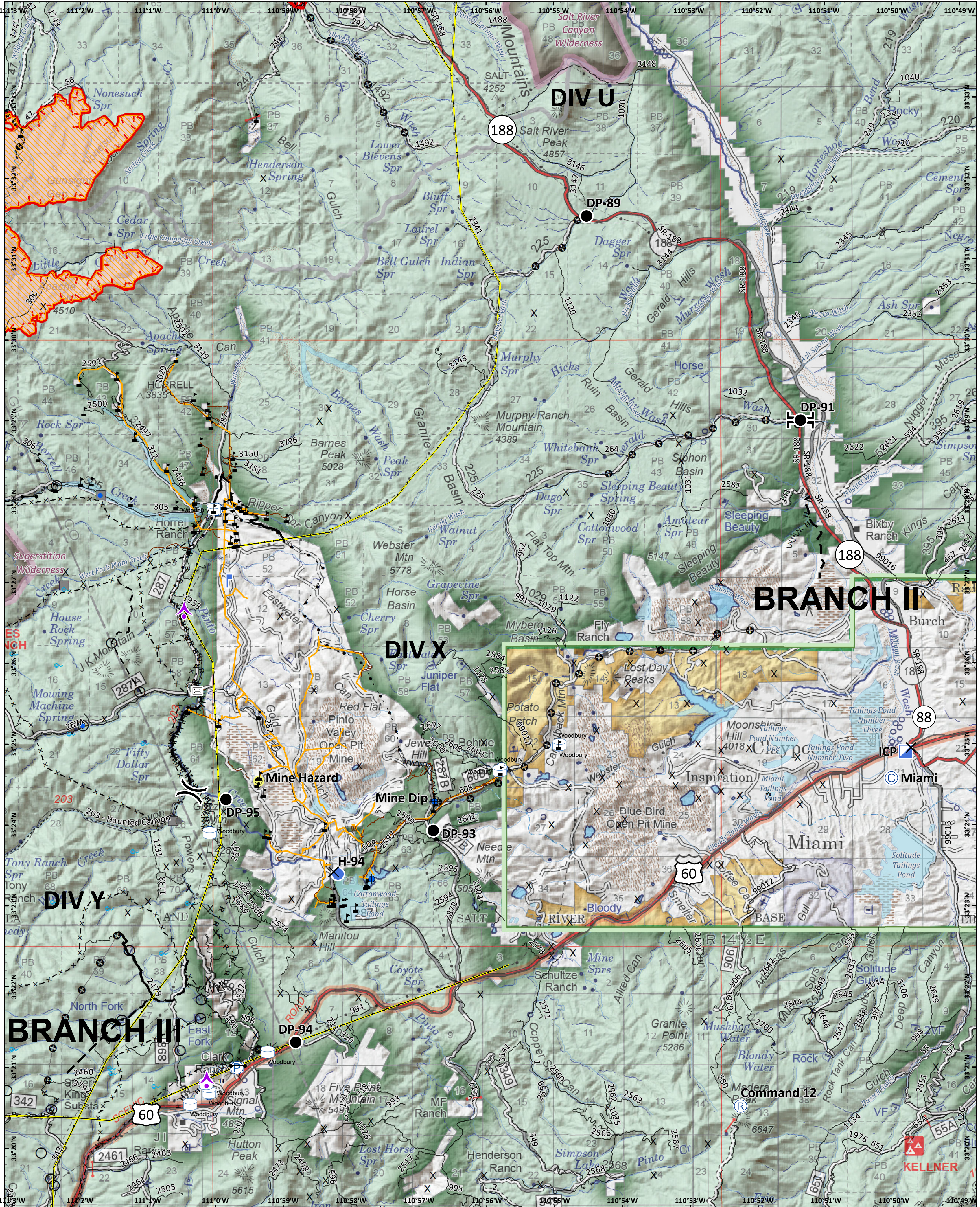
- | | | | | | | | | | | | | | | | | | | |
|--|--|--|--|--|--|--|--|--|--|--|--|--|--|--|--|--|--|--|
| | | | | | | | | | | | | | | | | | | |
| | | | | | | | | | | | | | | | | | | |
| | | | | | | | | | | | | | | | | | | |

Approx 96,307 acres (IR)
 6/23/19 2248 hrs

0 0.5 1 Miles

0 0.5 1 Kilometers

NAD 1983 UTM Zone 12N
 Prepared by: billsilva
 6/24/2019 0503 hrs



Woodbury
 AZ-TNF-000579
 06/24/2019 Day
Operations
 DIV X

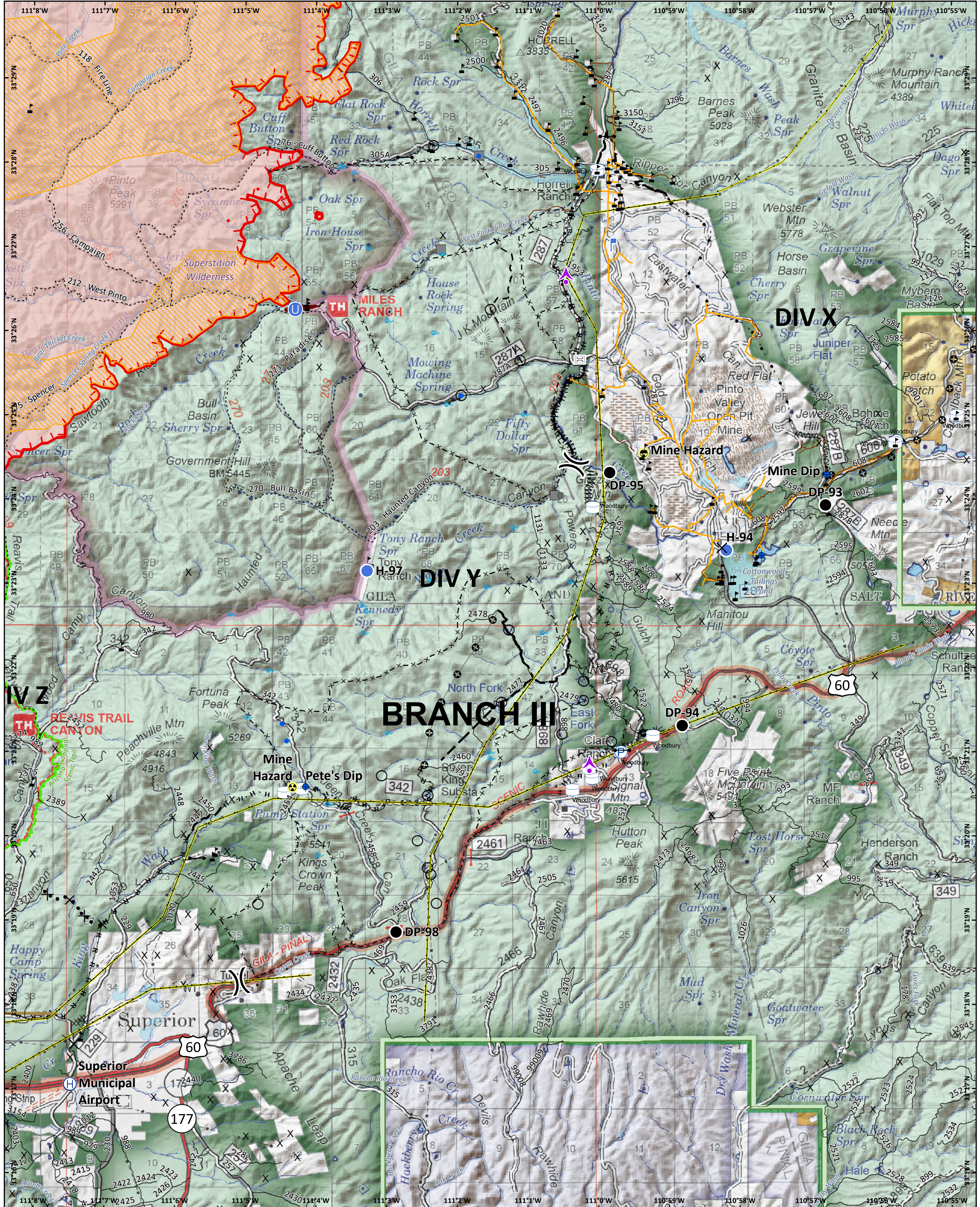
Aerial Hazard	Closure	Hazard	Lookout	Division Break	Branch Break	IR Scattered Heat	Completed Dozer Line	Completed Burnout	Wilderness
Bridge	Dip Site	Helispot	Repeater	U.S. Highway	Mines	PVM Temporary Access Road	Completed Hand Line	Fire Break Planned or Incomplete	Waterbody
Camp	Drop Point	Incident Command Post	Value at Risk	State Highway	U.S. Highway	Transmission Lines	Road as Completed Line	Planned Fire Line	Stream
Gate	Water Tank	Uncontrolled Fire Edge	Pump	Trail	Access or Improved Road	Proposed Burnout	Line Break Completed	Highlighted Manmade Feature	Wildfire Daily Fire Perimeter
							Other	Forest Boundary	

Approx 96,307 acres (IR)
 6/23/19 2248 hrs

SOUTHWEST AREA
 INCIDENT MANAGEMENT TEAM

0 0.5 1 Kilometers

NAD 1983 UTM Zone 12N
 Prepared by: billsilva
 6/24/2019 0503 hrs



Woodbury
 AZ-TNF-000579
 06/24/2019 Day
Operations
DIV Y

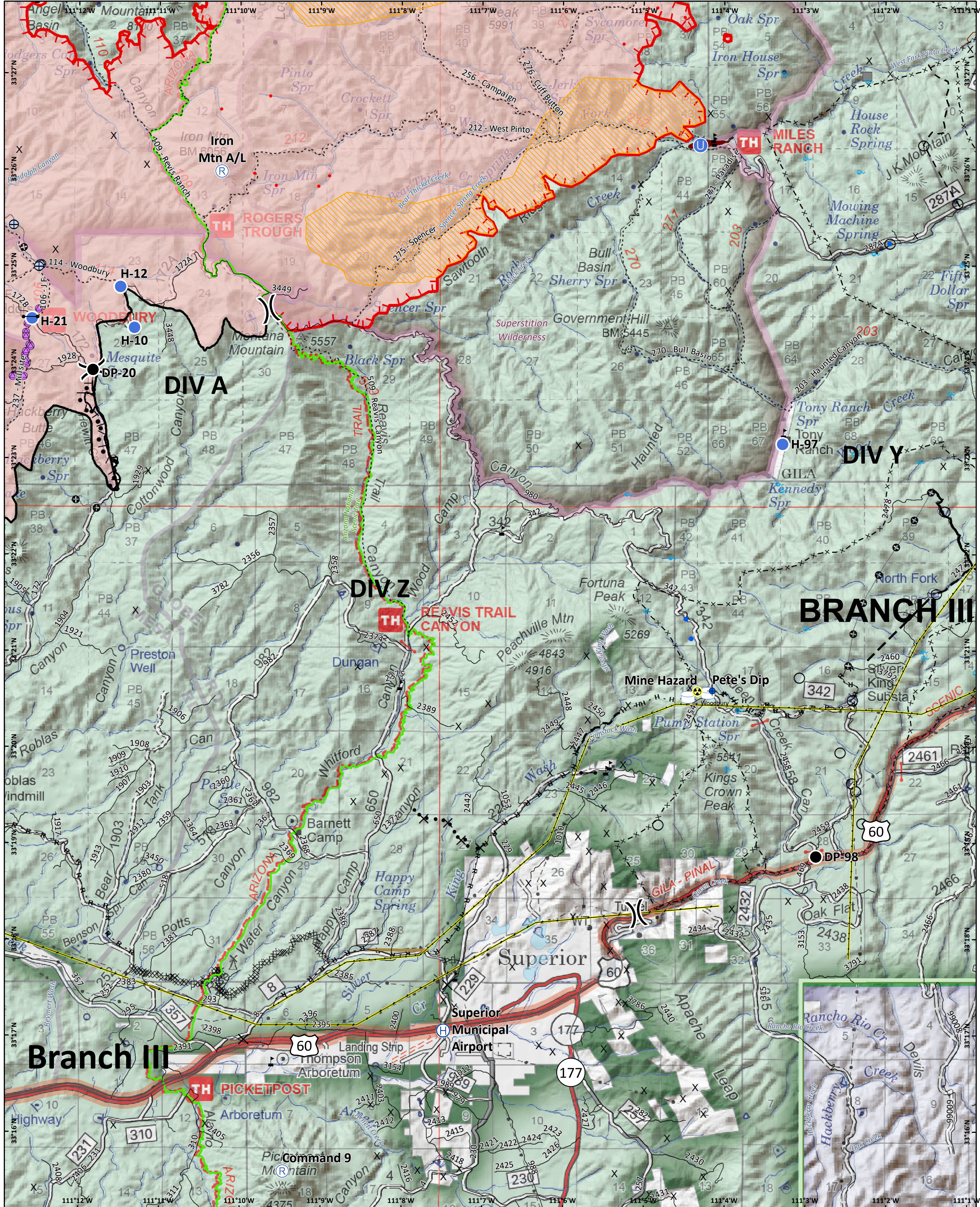
- Aerial Hazard
- Drop Point
- Unimproved Landing Area
- Value at Risk
- Water Tank
- Arizona National Scenic Trail
- Uncontrolled Fire Edge
- Proposed Burnout
- Other
- IR Isolated Heat Source
- IR Scattered Heat
- P/M Temporary Access Roads
- P/M Electrical Power Lines
- Transmission Lines
- Mines
- U.S. Highway
- State Highway
- Road
- Trail
- Completed Dozer Line
- H - Completed Hand Line
- R - Road as Completed Line
- Access or Improved Road
- Line Break Completed
- Proposed Dozer Line
- Fire Break Planned or Incomplete
- Planned Fire Line
- Highlighted Manmade Feature
- Repair Line
- Forest Boundary
- Wilderness
- Waterbody
- Stream
- Wildfire Daily Fire Perimeter

Approx 96,307 acres (IR)
 6/23/19 2248 hrs

SOUTHWEST AREA
INCIDENT MANAGEMENT TEAM

0 0.5 1 Miles
 0 0.5 1 Kilometers

NAD 1983 UTM Zone 12N
 Prepared by: billsilva
 6/24/2019 0503 hrs



Woodbury
 AZ-TNF-000579
 06/24/2019 Day
Operations
 DIV Z

- | | | | | | | |
|--------------|------------|-----------------------------------|------------------|---------------------------------|------------------------------|---------------------------------|
| ✕ Closure | ⚠ Hazard | ● Helispot | ⚠ Value at Risk | 🛢 Water Tank | 🔴 Uncontrolled Fire Edge | ✂ Proposed Dozer Line |
| ⚓ Dip Site | 🛠 Helibase | 🔧 Repair Point | 🚧 Division Break | 🔴 IR Isolated Heat Source | 🟡 Completed Line | 🟡 Planned Fire Line |
| ● Drop Point | 🚰 Repeater | 🚰 Water Development or Draft Site | 🚧 Division Break | 🟡 IR Scattered Heat | 🟡 Completed Dozer Line | 🟡 Repair Line |
| ➡ Gate | 🚰 Pump | | 🚧 Division Break | 🟡 PVM Temporary Access Roads | 🟡 H - Completed Hand Line | 🟡 Other |
| | | | 🚧 Division Break | 🟡 Transmission Lines | 🟡 R - Road as Completed Line | 🟡 Forest Boundary |
| | | | 🚧 Division Break | 🟡 Mines | 🟡 L Completed Burnout | 🟡 Wilderness |
| | | | 🚧 Division Break | 🟡 U.S. Highway | | 🟡 Waterbody |
| | | | 🚧 Division Break | 🟡 State Highway | | 🟡 Stream |
| | | | 🚧 Division Break | 🟡 Road | | 🟡 Wildfire Daily Fire Perimeter |
| | | | 🚧 Division Break | 🟡 Trail | | |
| | | | 🚧 Division Break | 🟡 Arizona National Scenic Trail | | |

Approx 96,307 acres (IR)
 6/23/19 2248 hrs

0 0.5 1 Kilometers
 0 0.5 1 Miles

SOUTHWEST AREA
 INCIDENT MANAGEMENT TEAM

NAD 1983 UTM Zone 12N
 Prepared by: billsiva
 6/24/2019 0503 hrs