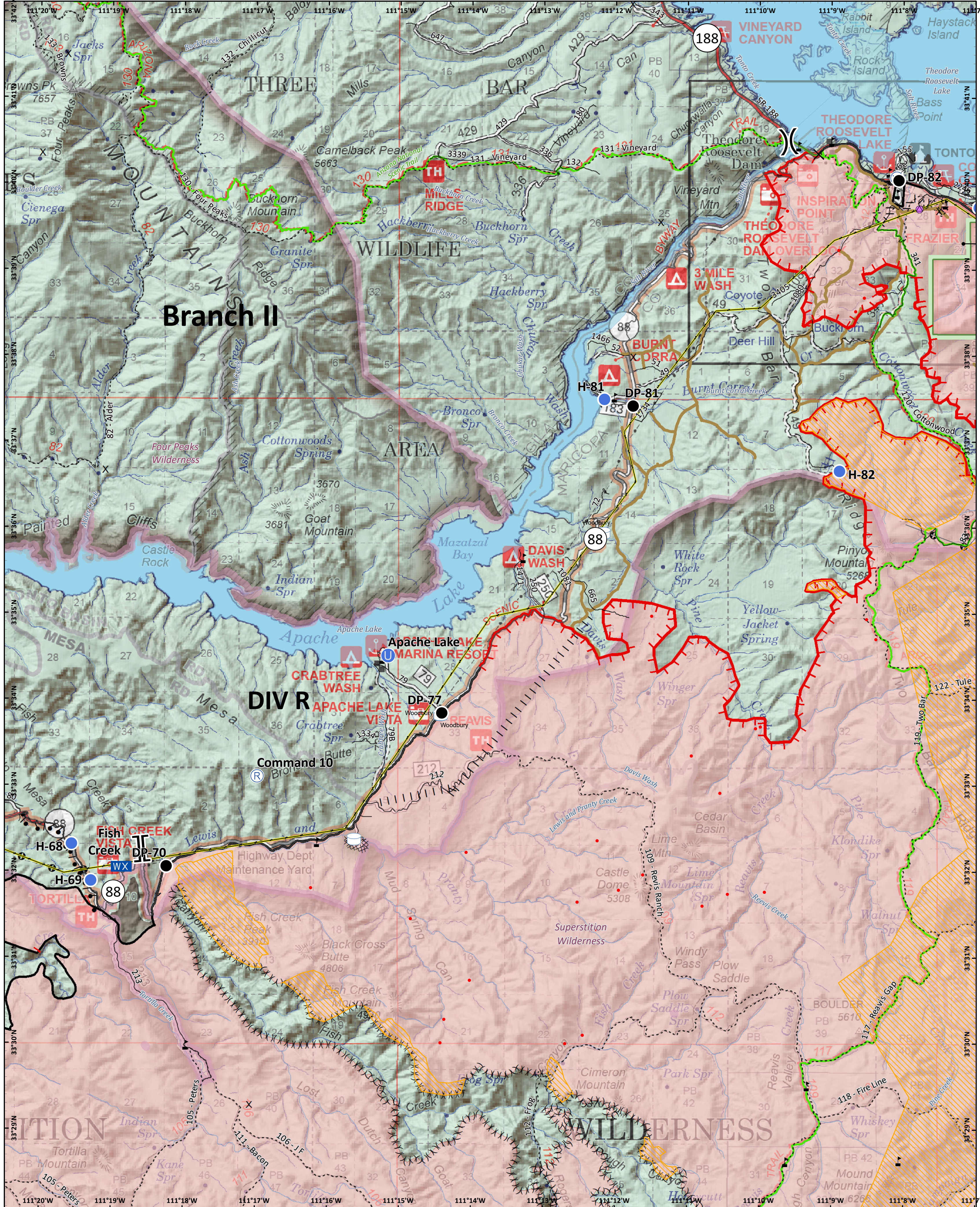


Branch II



Woodbury
 AZ-TNF-000579
 06/26/2019 Day
Operations
DIV R

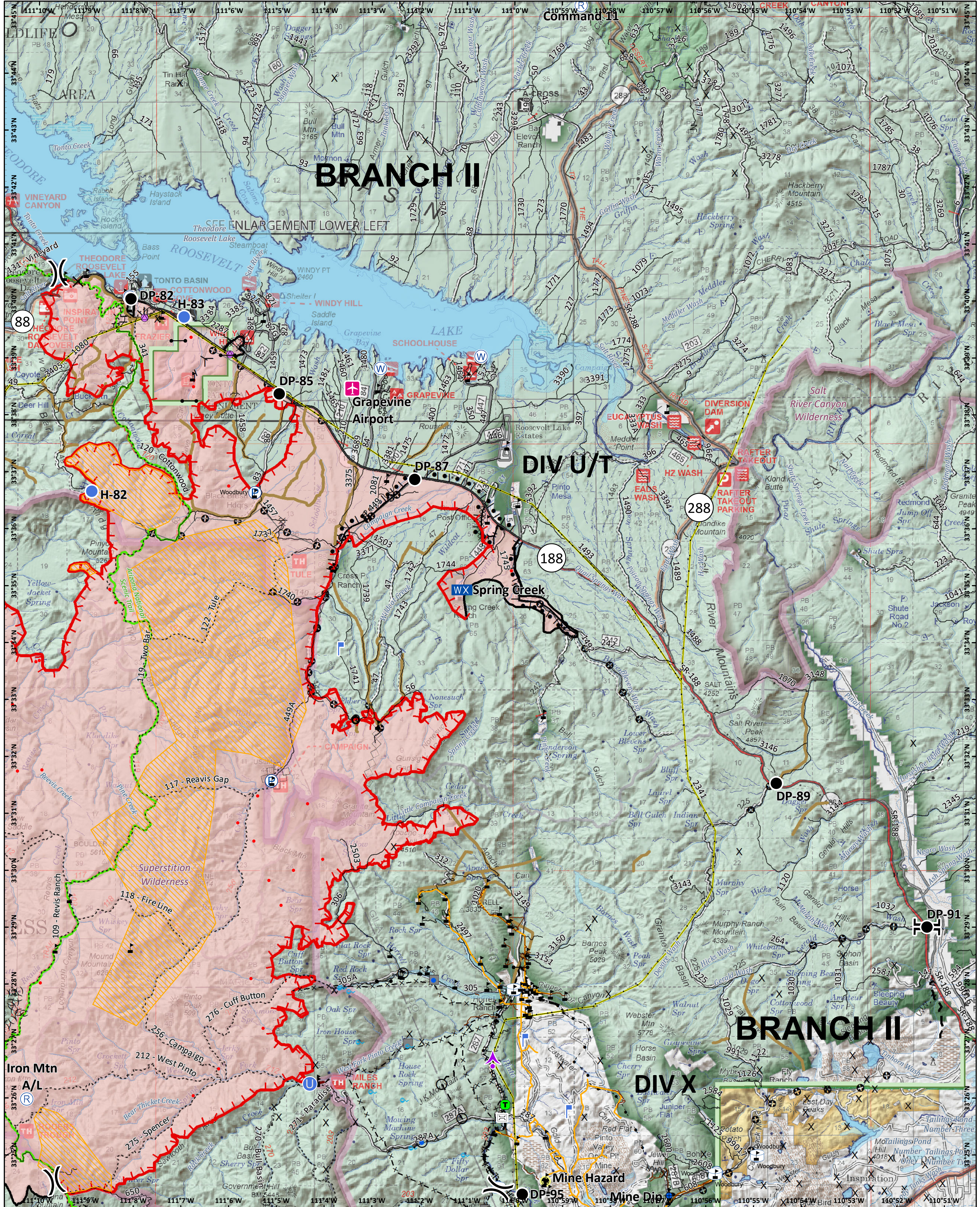
- | | | | | | | | |
|---------------------------|-----------------------|-----------------|---------------------------------|--------------------------|----------------------|----------------------------|---------------------------------|
| ✕ Closure | ● Helispot | ⚡ Road Repair | ⌋ Division Break | ⌋ Branch Break | ⌋ Mines | ⌋ Proposed Burnout | ⌋ Waterbody |
| ● Drop Point | Ⓜ Mobile Weather Unit | Ⓜ Water Source | ⌋ Arizona National Scenic Trail | ⌋ Uncontrolled Fire Edge | ⌋ Completed Line | ⌋ Completed Burnout | ⌋ Stream |
| Ⓜ Gate | Ⓜ Repair Point | Ⓜ Value at Risk | ⌋ Completed Dozer Line | ⌋ Completed Hand Line | ⌋ Other | ⌋ Ridge/Geographic Feature | ⌋ Wildfire Daily Fire Perimeter |
| Ⓜ Unimproved Landing Area | Ⓜ Repeater | Ⓜ Water Tank | ⌋ IR Isolated Heat Source | ⌋ IR Scattered Heat | ⌋ Transmission Lines | ⌋ Repair Line | ⌋ Wilderness |

Approx 123,263 acres (IR)
 6/25/19 2346 hrs

0 0.5 1 Miles
 0 0.5 1 Kilometers

SOUTHWEST AREA
INCIDENT MANAGEMENT TEAM

NAD 1983 UTM Zone 12N
 Prepared by: billsilva
 6/25/2019 2:17 hrs



BRANCH II

DIV U/T

BRANCH II

DIV X

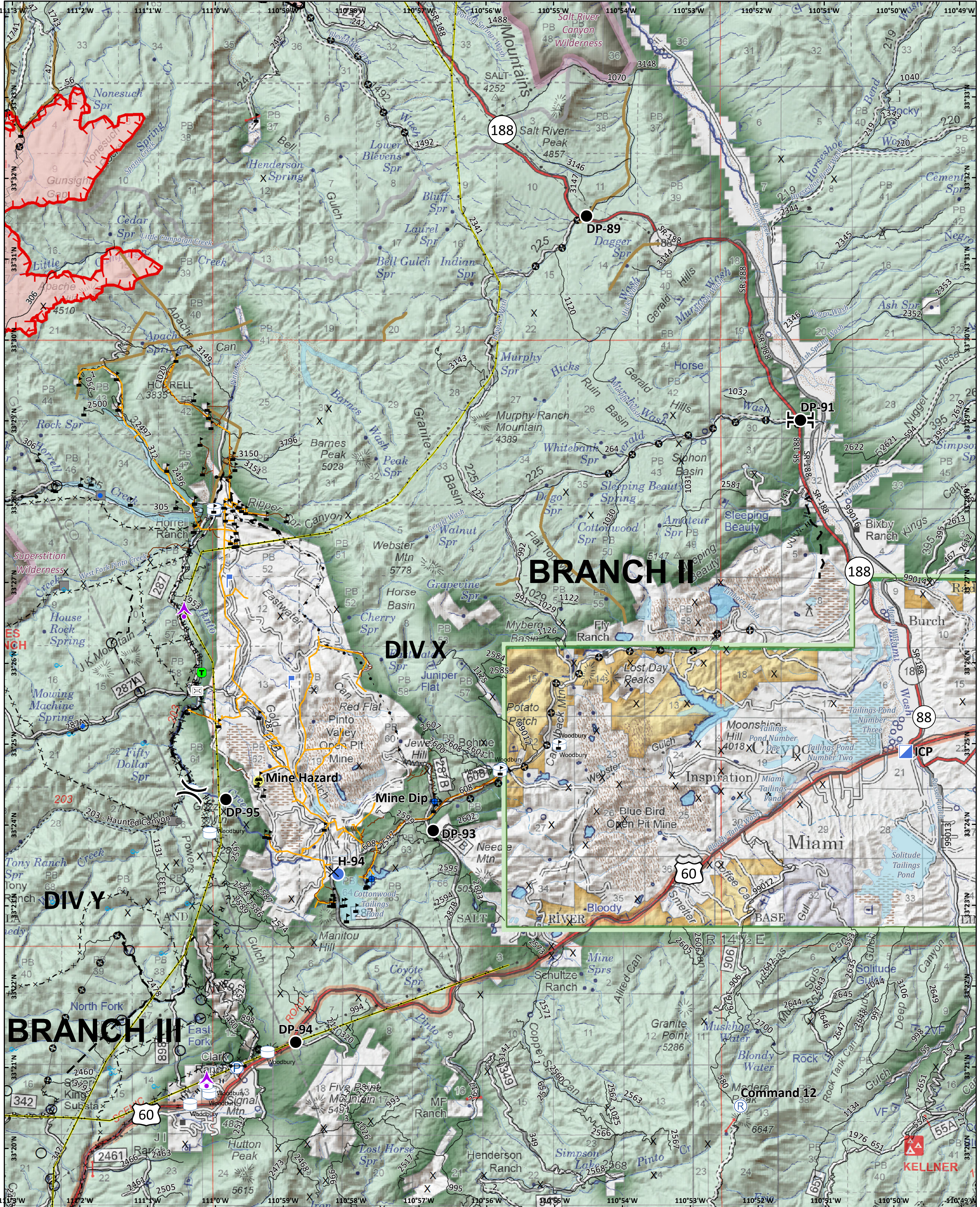
Woodbury
 AZ-TNF-000579
 06/26/2019 Day
Operations
DIV U/T

Approx 123,263 acres (IR)
 6/25/19 2346 hrs

0 0.5 1 Miles
 0 0.5 1 Kilometers

SOUTHWEST AREA INCIDENT MANAGEMENT TEAM

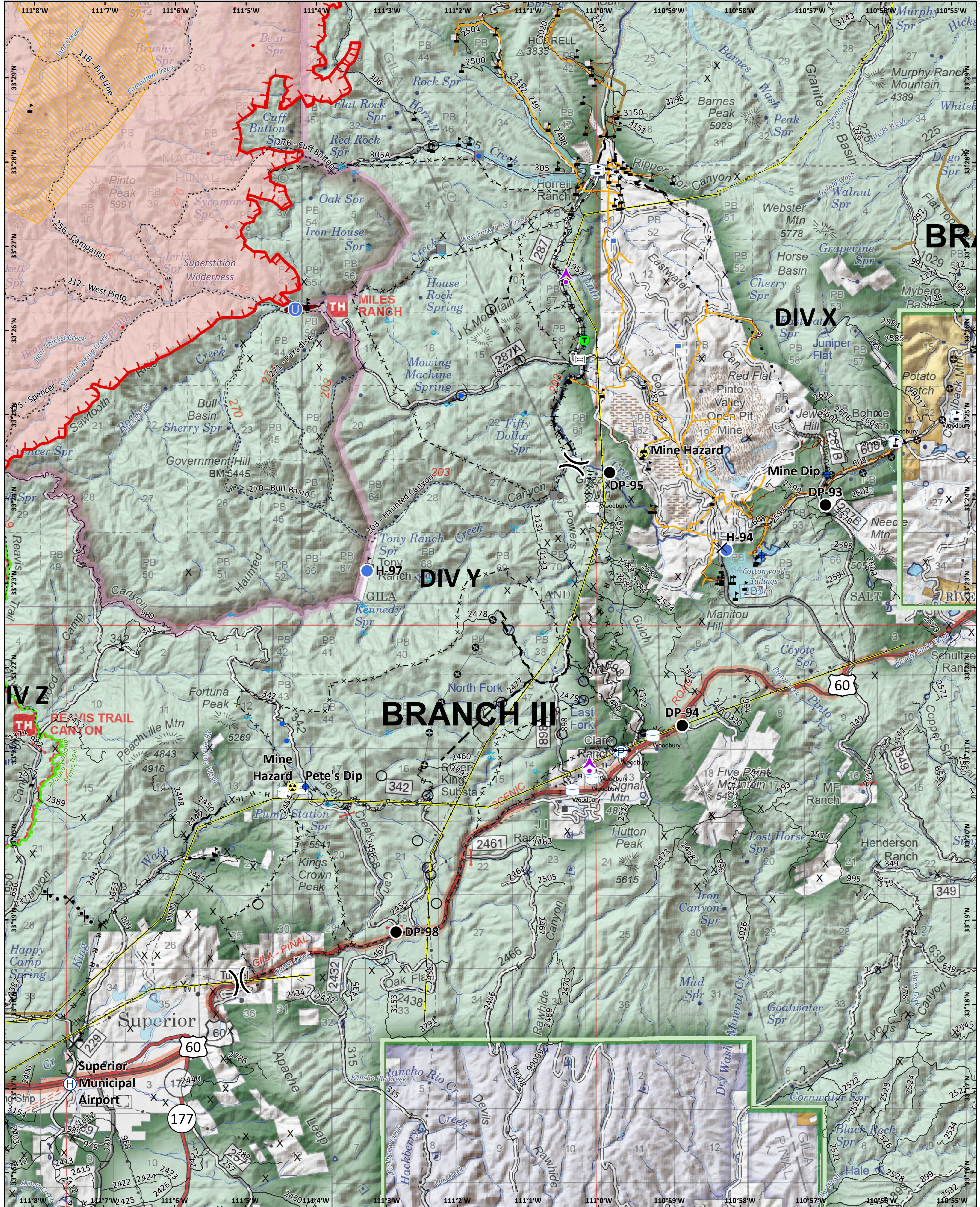
NAD 1983 UTM Zone 12N
 Prepared by: billsiva
 6/25/2019 2127 hrs



Woodbury
 AZ-TNF-000579
 06/26/2019 Day
Operations
 DIV X

Approx 123,263 acres (IR)
 6/25/19 2346 hrs

 0 0.5 1 Kilometers
 NAD 1983 UTM Zone 12N
 Prepared by: billsilva
 6/25/2019 2:17 hrs

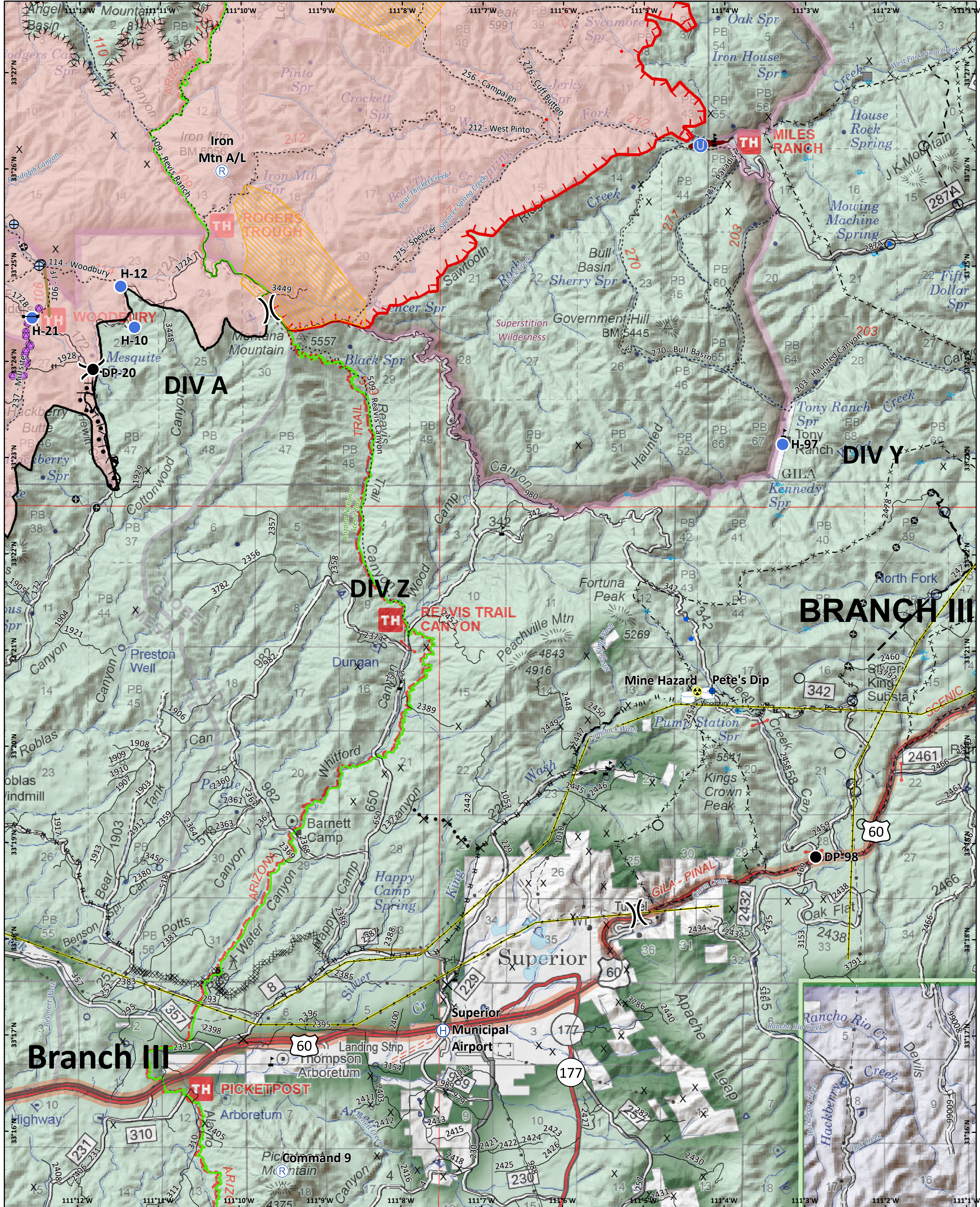


Woodbury
 AZ-TNF-000579
 06/26/2019 Day
Operations
DIV Y

Approx 123,263 acres (IR)
 6/25/19 2346 hrs

0 0.5 1 Miles
 0 0.5 1 Kilometers

NAD 1983 UTM Zone 12N
 Prepared by: billsilva
 6/25/2019 2:17 hrs



Woodbury
 AZ-TNF-000579
 06/26/2019 Day
Operations
 DIV Z

✕ Closure	⚠ Hazard	● Helispot	⚡ Value at Risk	🛢 Water Tank	🔥 Uncontrolled Fire Edge	✂ Proposed Dozer Line	🌊 Stream
⬇ Dip Site	🛑 Helibase	🔧 Repair Point	⏏ IR Isolated Heat Source	🚧 Completed Line	🔥 Completed Fire Line	⏏ Planned Fire Line	🔥 Wildfire Daily Fire Perimeter
● Drop Point	🔄 Repeater	🚰 Unimproved Landing Area	🚧 IR Scattered Heat	⏏ Completed Dozer Line	⏏ Ridge/Geographic Feature	🔧 Repair Line	
➡ Gate	🚰 Water Development or Draft Site	🚰 Pump	🚧 PVM Temporary Access Roads	⏏ Transmission Lines	⏏ H - Completed Hand Line	🔧 Other	
			⏏ Division Break	⏏ Mines	🔥 R - Road as Completed Line	🌲 Forest Boundary	
			⏏ U.S. Highway	⏏ U.S. Highway	🔥 L Completed Burnout	🌲 Wilderness	
			⏏ State Highway	⏏ Road	🌲 Forest Boundary	🌲 Wilderness	
			⏏ Trail	⏏ Trail	🌲 Forest Boundary	🌲 Wilderness	
			⏏ Arizona National Scenic Trail	⏏ Arizona National Scenic Trail	🌲 Forest Boundary	🌲 Wilderness	

Approx 123,263 acres (IR)
 6/25/19 2346 hrs

SOUTHWEST AREA
 INCIDENT MANAGEMENT TEAM

0 0.5 1 Kilometers
 0 0.5 1 Miles

NAD 1983 UTM Zone 12N
 Prepared by: billsiva
 6/25/2019 2127 hrs