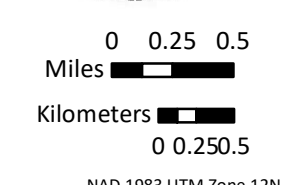


Approx 123,263 (IR) acres  
6/25/19 2346 hrs

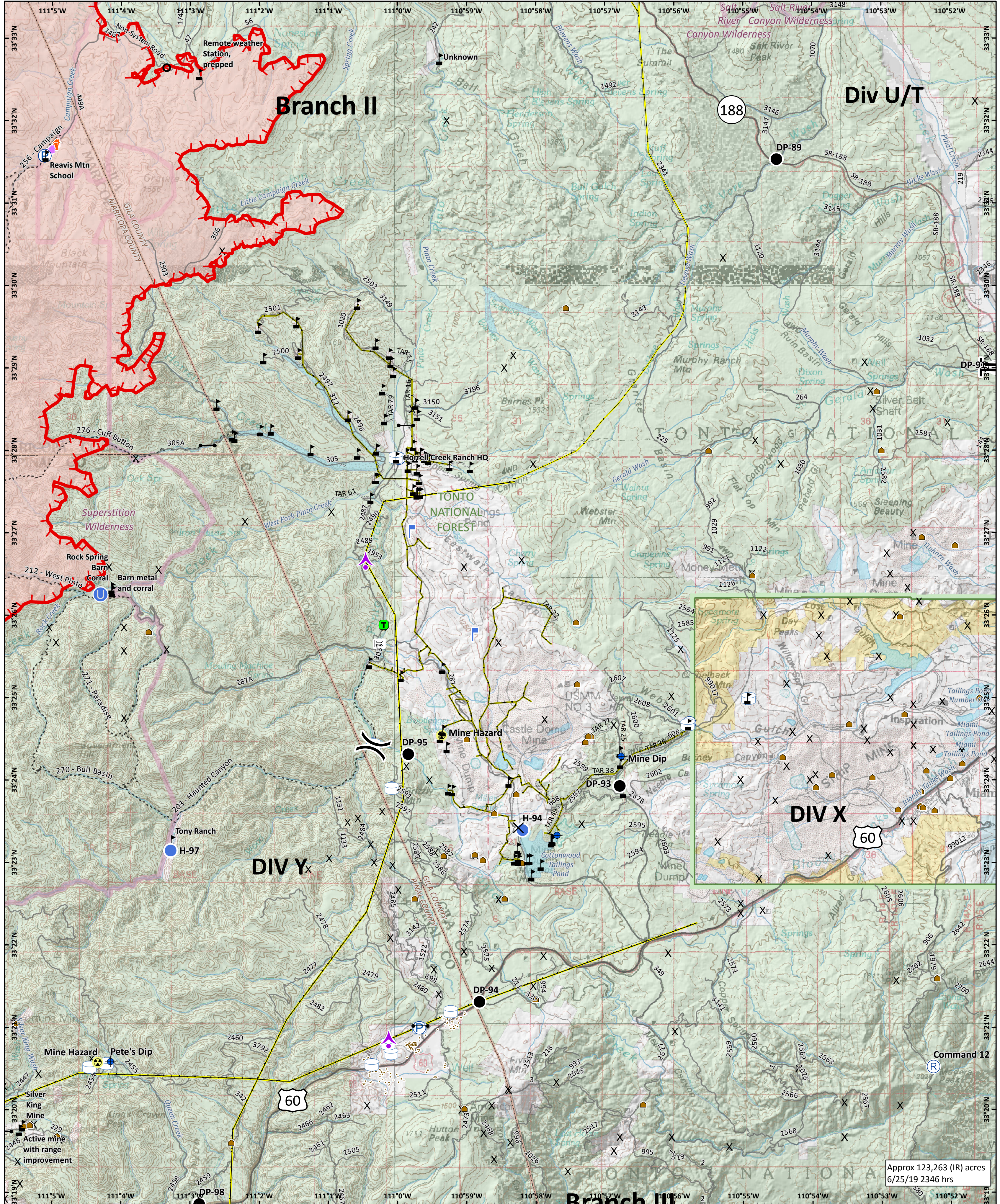
**Woodbury**  
AZ-TNF-000579  
06/26/2019 Day Ops

**Structure Protection**  
**Pinto**

- |  |  |  |  |  |
|--|--|--|--|--|
|  |  |  |  |  |
|  |  |  |  |  |
|  |  |  |  |  |
|  |  |  |  |  |
|  |  |  |  |  |
|  |  |  |  |  |
|  |  |  |  |  |
|  |  |  |  |  |
|  |  |  |  |  |



NAD 1983 UTM Zone 12N  
Prepared by: aklsk  
6/25/2019 2221 hrs



**Woodbury**  
 AZ-TNF-000579  
 06/26/2019 Day Ops

**Structure Protection**  
 Pinto/Carolotta/Top of World

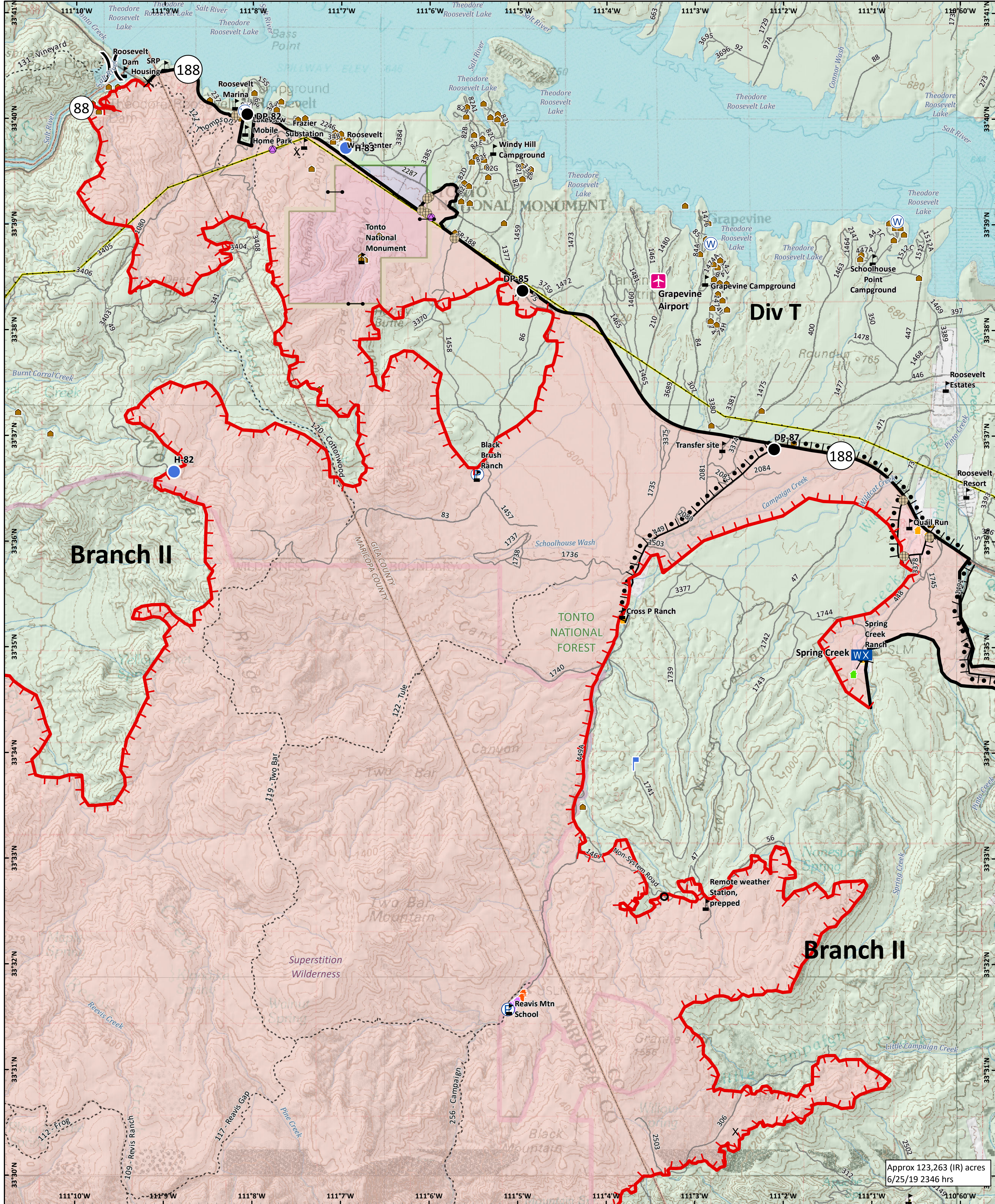
- |               |                         |                |                        |                                  |                               |
|---------------|-------------------------|----------------|------------------------|----------------------------------|-------------------------------|
| Aerial Hazard | Fence - Cut/Damaged     | Repeater       | Branch Break           | Defensible - Stand Alone         | PVM Power Lines               |
| Bridge        | Gate                    | Value at Risk  | Uncontrolled Fire Edge | Non-Defensible - Prep and Leave  | Temporary Access Roads        |
| Clean Up Area | Hazard                  | Division Break | Pump                   | Non-Defensible - Rescue Drive-By | Wildfire Daily Fire Perimeter |
| Closure       | Unimproved Landing Area | Division Break | Pump                   | Structures                       | BLM                           |
| Culvert       | Helispot                | Division Break | Pump                   | Pinal County Structure Footprint | Private                       |
| Dip Site      | Lookout                 | Division Break | Other Property         | Mines                            | State                         |
| Drop Point    |                         | Division Break | Water Tank             | Transmission Lines               | USFS                          |

Approx 123,263 (IR) acres  
 6/25/19 2346 hrs

0 0.25 0.5  
 Miles

0 0.250.5  
 Kilometers

NAD 1983 UTM Zone 12N  
 Prepared by: aklsk  
 6/25/2019 2321 hrs



**Woodbury**  
 AZ-TNF-000579  
 06/26/2019 Day Ops

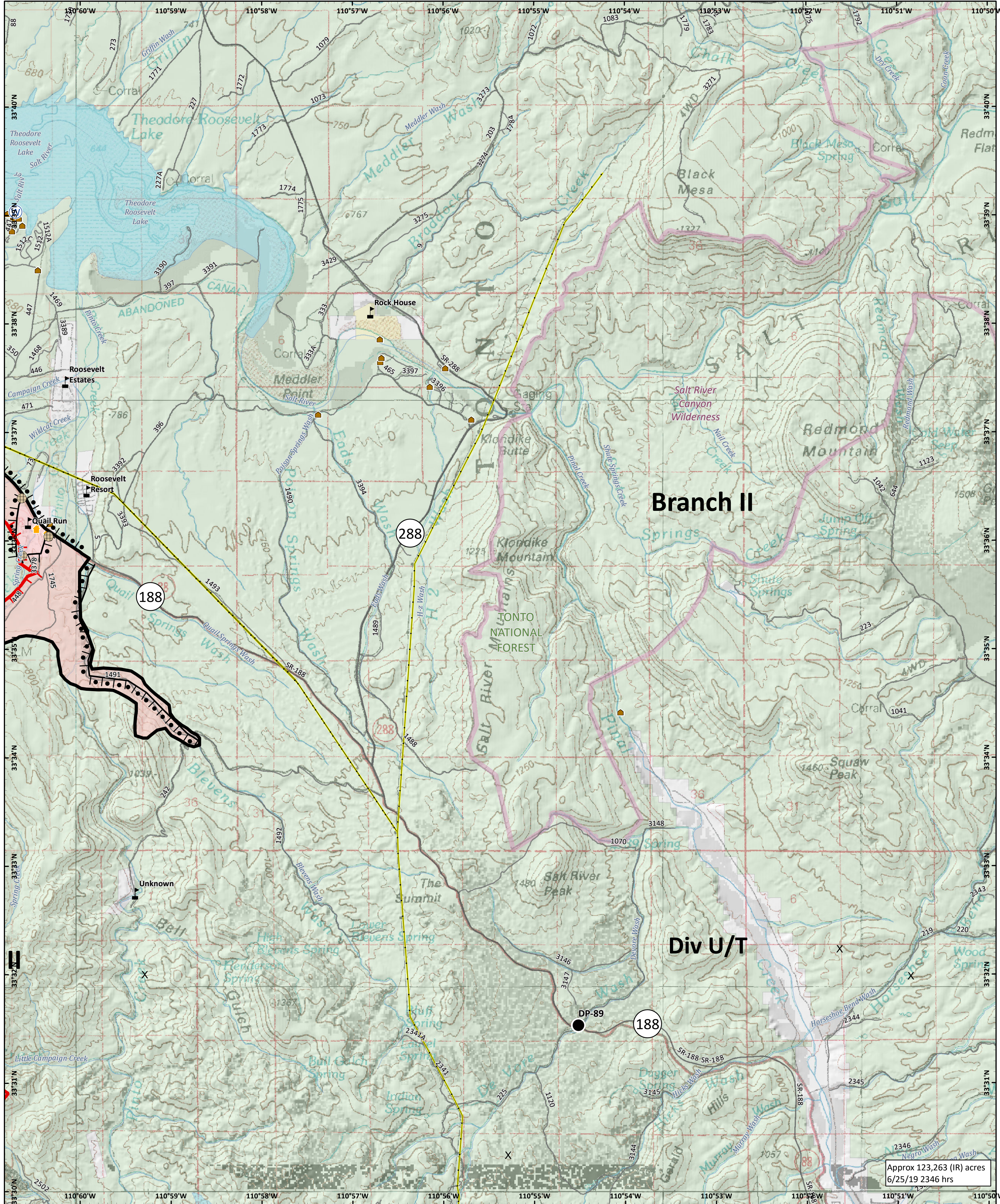
**Structure Protection**  
**Roosevelt/Spring Creek**


Approx 123,263 (IR) acres  
 6/25/19 2346 hrs

0 0.25 0.5  
 Miles

0 0.25 0.5  
 Kilometers

NAD 1983 UTM Zone 12N  
 Prepared by: alaska  
 6/25/2019 2221 hrs



Branch II

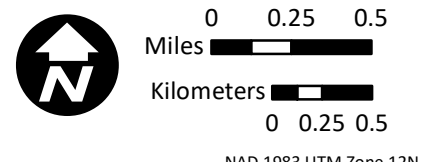
Div U/T

Approx 123,263 (IR) acres  
6/25/19 2346 hrs

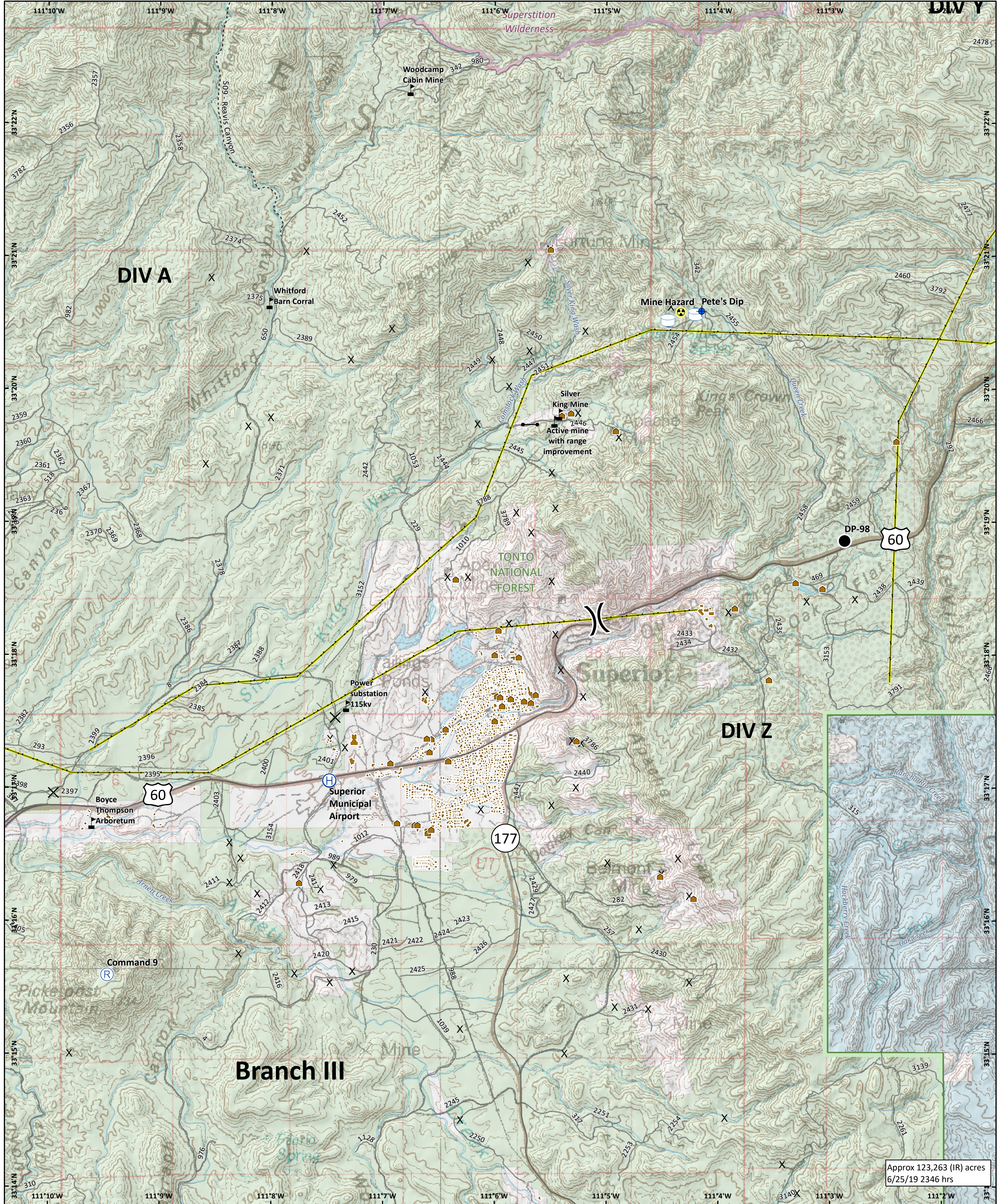
**Woodbury**  
AZ-TNF-000579  
06/26/2019 Day Ops

**Structure Protection**  
**Salt River**

- Drop Point
- Fence - Cut/Damaged
- Water Source
- Value at Risk
- Uncontrolled Fire Edge
- Completed Line
- Completed Burnout
- Defensible - Prep and Hold
- Structures
- X Mines
- Transmission Lines
- Wildfire Daily Fire Perimeter
- BR
- Private
- USFS



NAD 1983 UTM Zone 12N  
Prepared by: aklsk  
6/25/2019 2221 hrs



**Woodbury**  
 AZ-TNF-000579  
 06/26/2019 Day Ops

**Structure Protection  
 Superior**

- |              |                 |                                    |
|--------------|-----------------|------------------------------------|
| X Closure    | (R) Repeater    | ■ Structures                       |
| ● Dip Site   | ⚡ Value at Risk | ■ Pinal County Structure Footprint |
| ● Drop Point | (H) Helibase    | X Mines                            |
| — Gate       | (P) Pump        | — Transmission Lines               |
| ☢ Hazard     | ⊕ Water Tank    | □ Private                          |
| (H) Helibase |                 | □ State                            |
|              |                 | □ USFS                             |

Approx 123,263 (IR) acres  
 6/25/19 2346 hrs

0 0.25 0.5  
 Miles

0 0.25 0.5  
 Kilometers

NAD 1983 UTM Zone 12N  
 Prepared by Alaska  
 6/25/2019 2221 hrs