

Woodbury Fire
 AZ-TNF-000579
 6/29/2019 Day

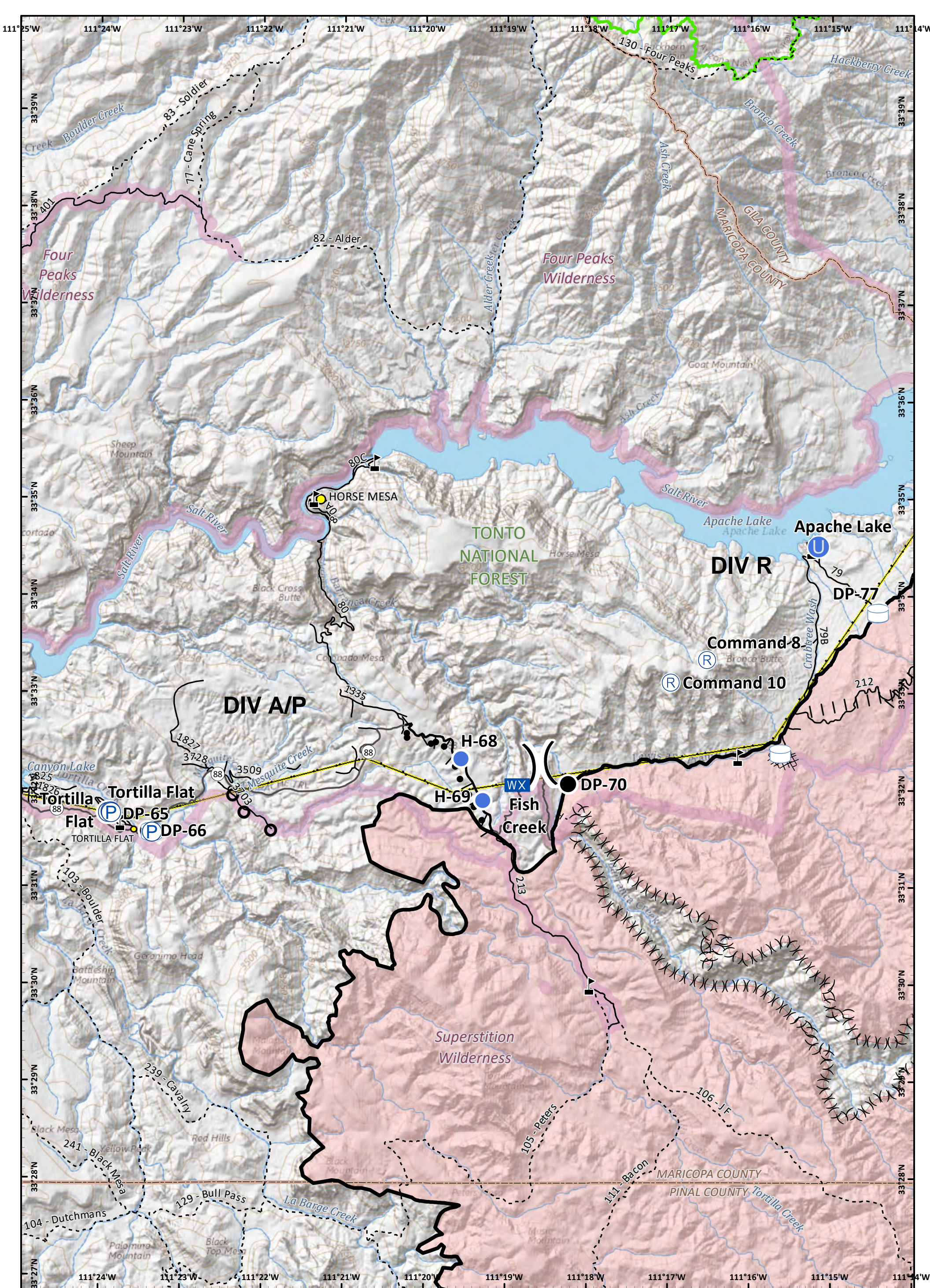
Incident Action Plan Index

- Index
- Camp
- Drop Point
- Helibase
- Helispot
- Uncontrolled Fire Edge
- Completed Line
- Incident Command Post
- Division Break
- Wildfire Daily Fire Perimeter
- Cities
- Arizona National Scenic Trail
- County
- Forest Boundary
- Wilderness

Approx 123,590 (IR) acres
 6/27/2127 hrs

0 1 2
 Miles
 0 1 2
 Kilometers

NAD 1983 UTM Zone 12N
 Prepared by: Admin
 6/28/2019 1847 hrs



Incident Action Plan
Page: 1

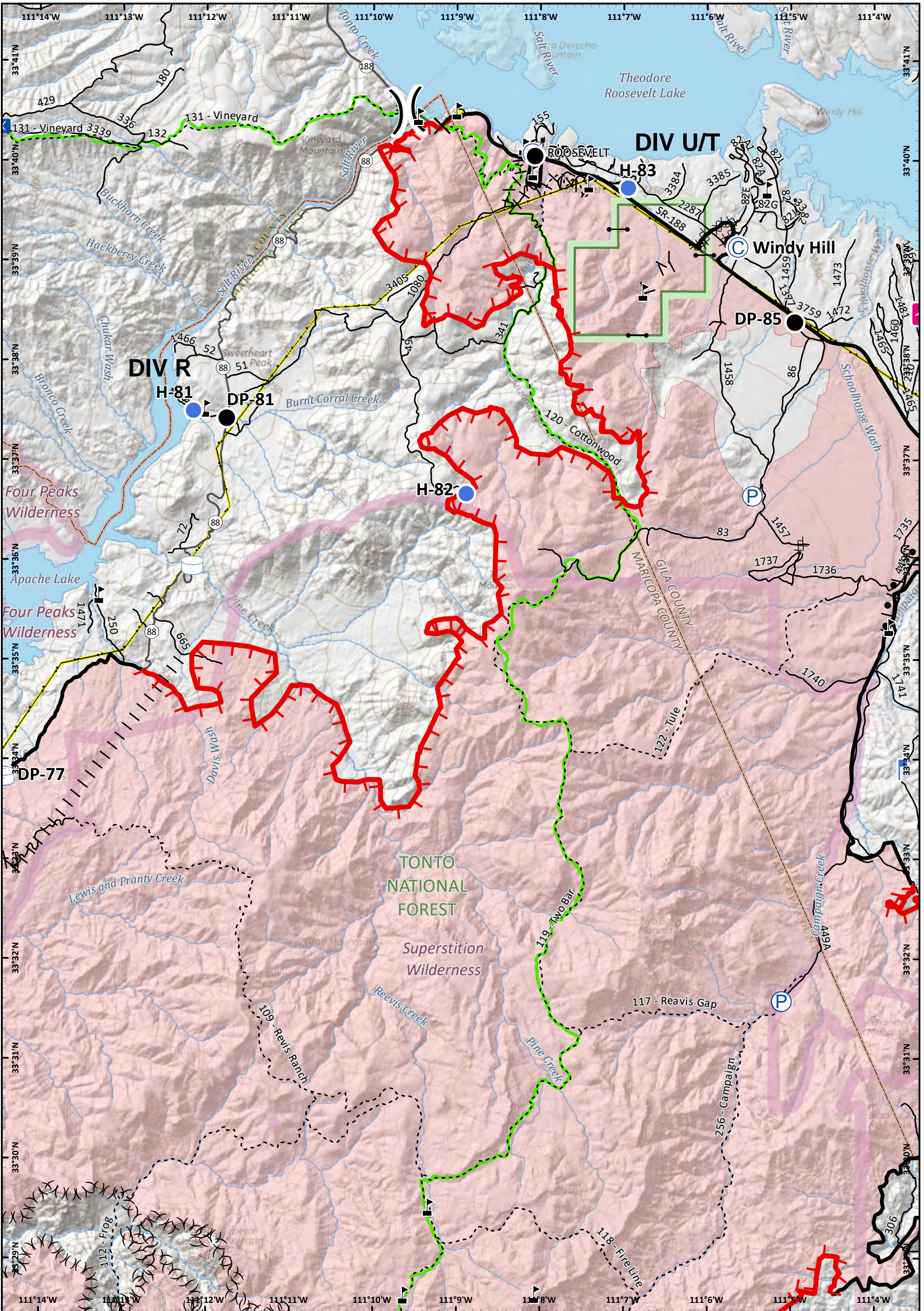
Woodbury Fire
AZ-TNF-000579
6/29/2019 Day

Pump	Proposed Burnout	Arizona National Scenic Trail	Camp	Unimproved Landing Area	Value at Risk
Water Tank	Completed Burnout	County	Closure	Helispot	Division Break
Completed Line	Ridge/Geographic Feature	Forest Boundary	Culvert	Mobile Weather Unit	
Completed Dozer Line	Cities	Wilderness	Drop Point	Repeater	
Completed Hand Line	Towns	Transmission Lines			
State Highway	Stream	Waterbody			
Road		Stream			

Approx 123,590 acres (IR)
6/27/19 2137 hrs

0 0.5 1
Miles

NAD 1983 UTM Zone 12N
Prepared by: Admin
6/28/2019 1850 hrs

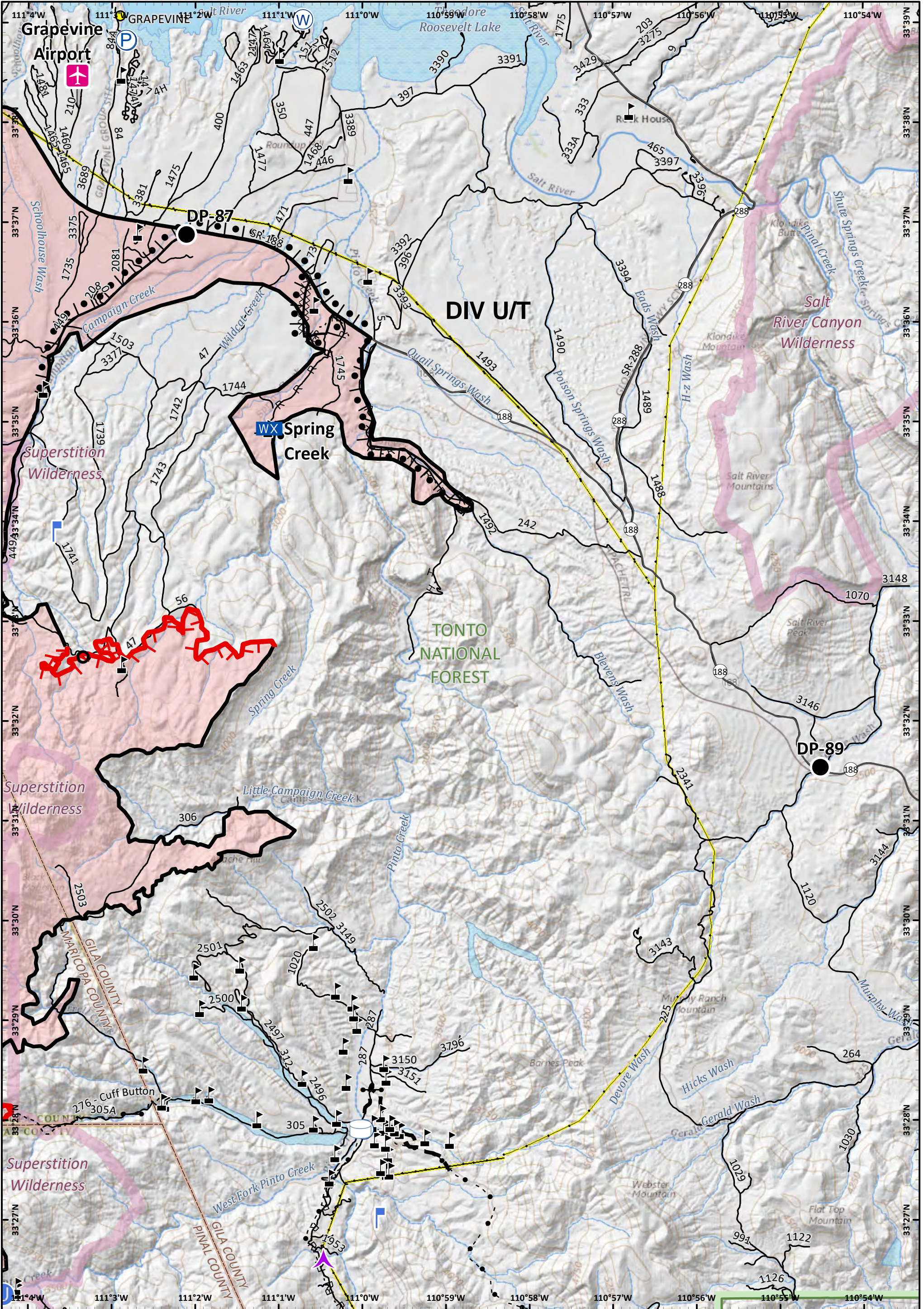


Incident Action Plan
 Page: 2

Woodbury Fire
 AZ-TNF-000579
 6/29/2019 Day

Pump	Completed Dozer Line	Towns	Waterbody	Drop Point	Mobile Weather Unit	Division Break
Other Property	Completed Hand Line	State Highway	Stream	Airstrip or Airport	Gate	Road Repair
Water Tank	Proposed Burnout	Road	Arizona National Scenic Trail	Helispot	Water Source	Lookout
Uncontrolled Fire Edge	Completed Burnout	Trail	County	Camp	Value at Risk	
Completed Line	Ridge/Geographic Feature	Forest Boundary	Wilderness	Closure		
Cities		Transmission Lines				

Approx 123,590 acres (IR)
 6/27/19 2137 hrs
 0 0.5 1 Miles
NAD 1983 UTM Zone 12N
 Prepared by: Admin
 6/28/2019 1850 hrs



Incident Action Plan
 Page: 3

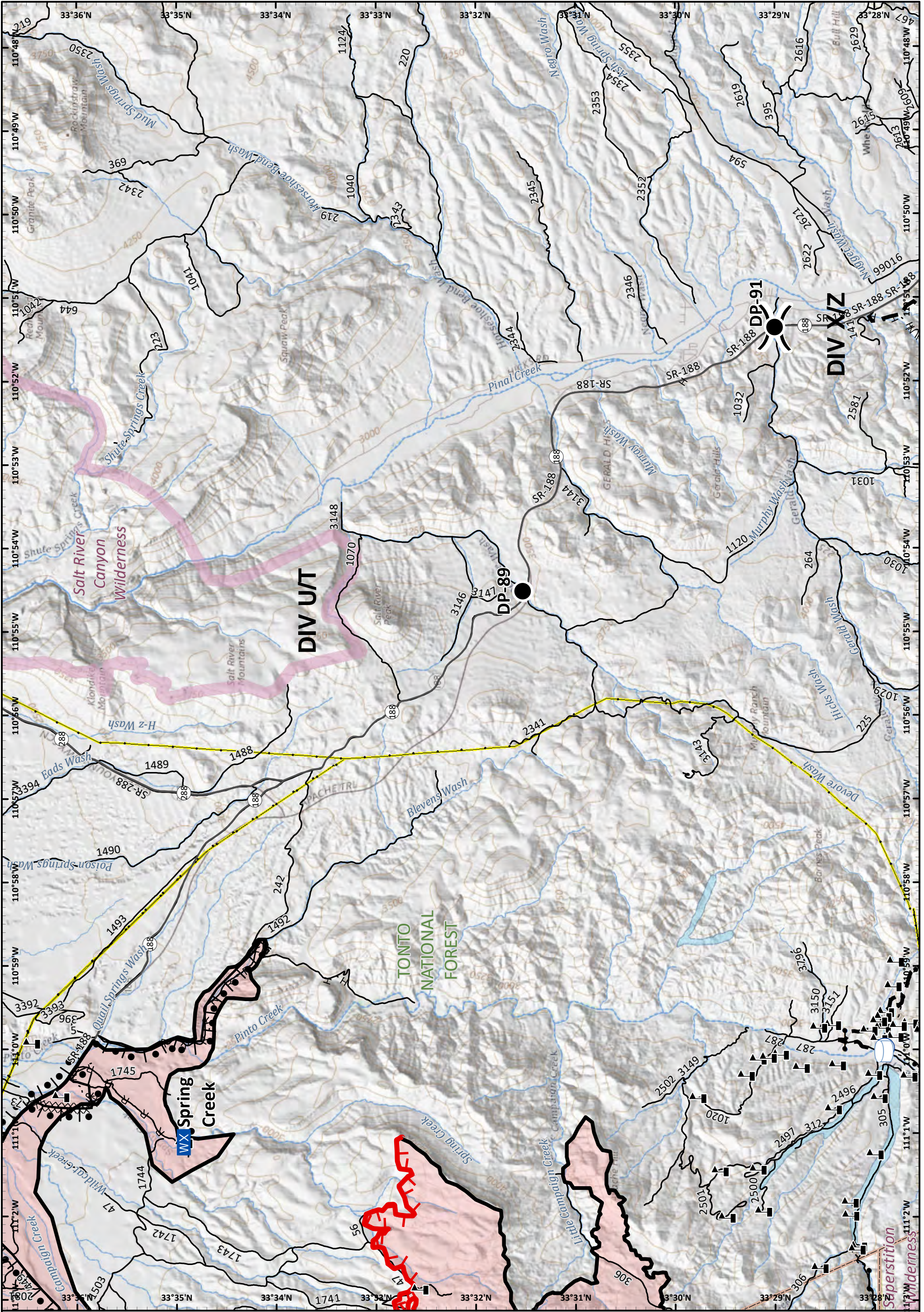
Woodbury Fire
 AZ-TNF-000579
 6/29/2019 Day

Pump	H - Completed Hand Line	State Highway	Aerial Hazard	Gate	Water Source
Water Tank	R - Road as Completed Line	Road	Airstrip or Airport	Unimproved Landing Area	Value at Risk
Uncontrolled Fire Edge	Completed Burnout	Trail	Culvert	Lookout	Mobile Weather Unit
Completed Line	Planned Fire Line	County	Drop Point		
Completed Dozer Line	Highlighted Manmade Feature	Forest Boundary			
	Cities	Wilderness			
		Transmission Lines			
		Waterbody			
		Stream			

Approx 123,590 acres (IR)
 6/27/19 2137 hrs

0 0.5 1 Miles

NAD 1983 UTM Zone 12N
 Prepared by: Admin
 6/28/2019 1850 hrs



Incident Action Plan
Page: 4
Woodbury Fire
 AZ-TNF-000579
 6/29/2019 Day

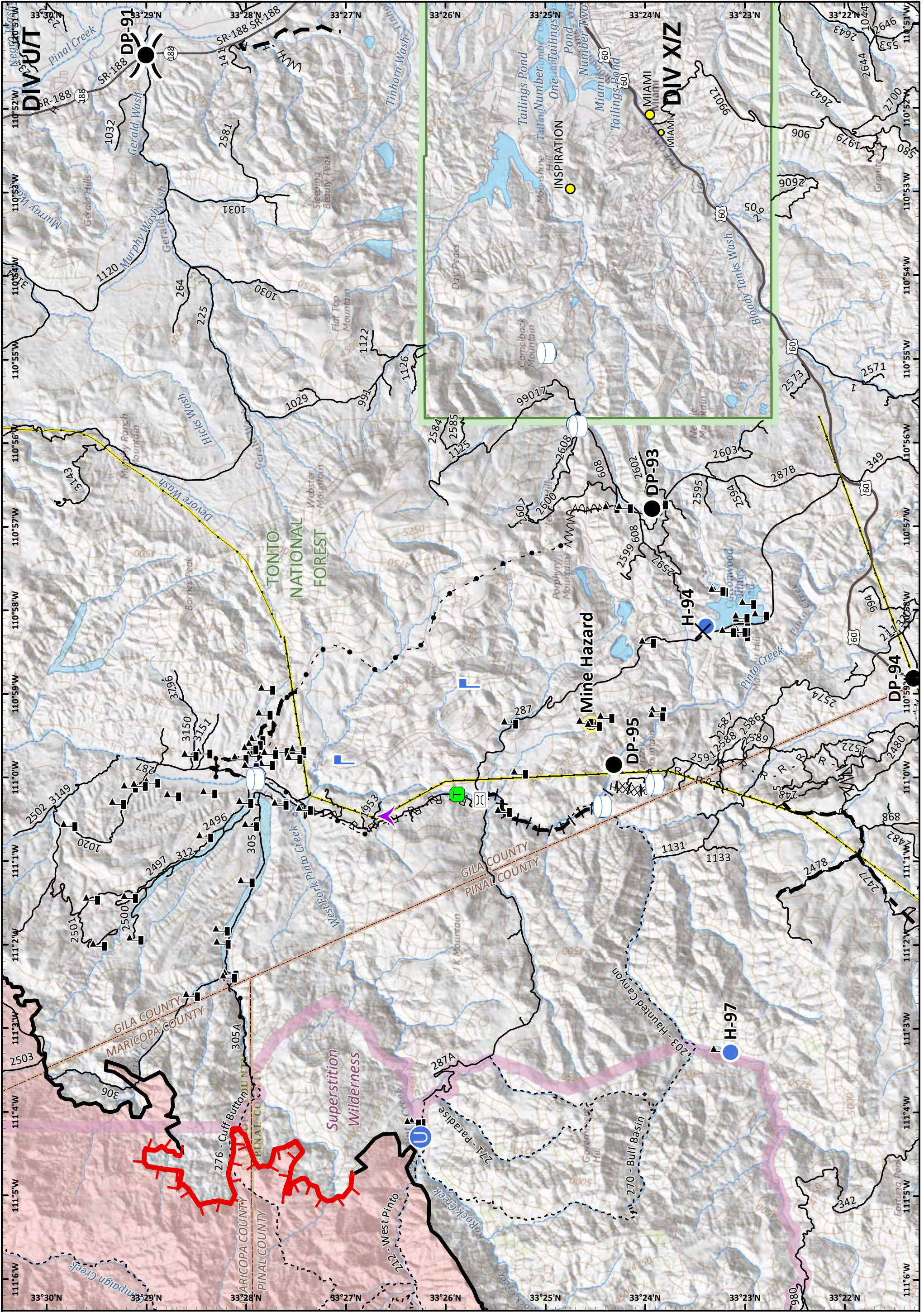
- | | | | | |
|-----------------------------|----------------------------------|--------------------|---------------------|----------------|
| Pump | H - Completed Hand Line | State Highway | Drop Point | Division Break |
| Water Tank | R - Road as Completed Line | Road | Gate | |
| Uncontrolled Fire Edge | Completed Burnout | Trail | Mobile Weather Unit | |
| Completed Line | Fire Break Planned or Incomplete | County | Value at Risk | |
| Completed Dozer Line | Planned Fire Line | Forest Boundary | | |
| Highlighted Manmade Feature | Highlighted Manmade Feature | Wilderness | | |
| | | Transmission Lines | | |
| | | Waterbody | | |
| | | Stream | | |

SW AREA
INCIDENT MANAGEMENT TEAM

Approx 123,590 acres (IR)
6/27/19 2137 hrs

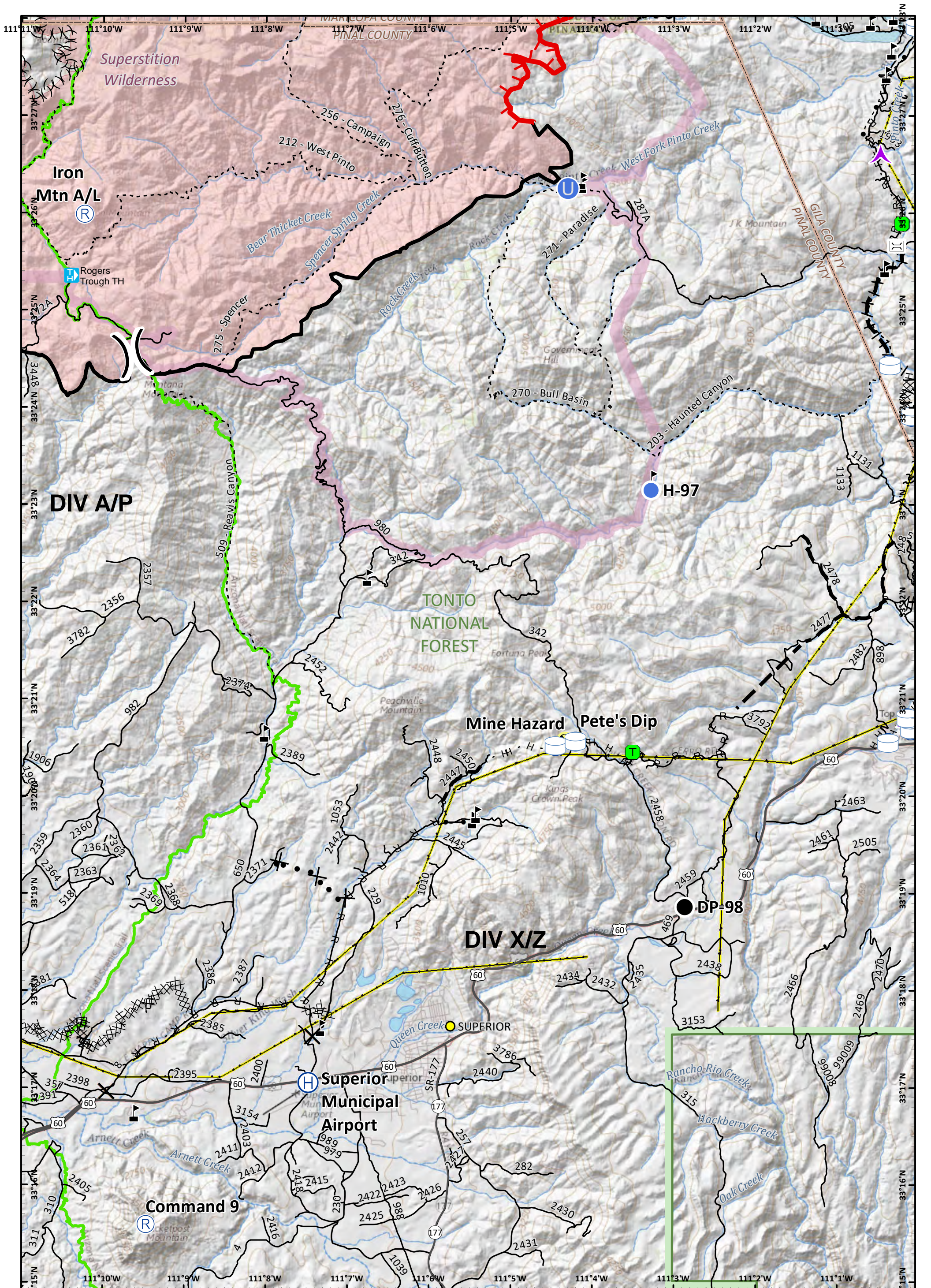
0 0.5 1
Miles

NAD 1983 UTM Zone 12N
Prepared by: Admin
6/28/2019 1850 hrs



Incident Action Plan
Page: 5
Woodbury Fire
 AZ-TNF-000579
 6/29/2019 Day

Pump	H - Completed Hand Line	Highlighted Manmade Feature	Wilderness	Clean Up Area	Unimproved Landing Area	Division Break
Water Tank	R - Road as Completed Line	Cities	Transmission Lines	Closure	Helispot	Approx 123,590 acres (IR)
Uncontrolled Fire Edge	Line Break Completed	Towns	Waterbody	Drop Point	Lookout	0 0.5 1 Miles
Completed Line	Proposed Burnout	U.S. Highway	Stream	Gate	Value at Risk	SOUTHWEST AREA INCIDENT MANAGEMENT TEAM
Completed Dozer Line	Fire Break Planned or Incomplete	Road	Aerial Hazard	Hazard		North arrow
Planned Fire Line	Trail	County	Bridge			NAD 1983 UTM Zone 12N Prepared by: Admin 6/28/2019 1850 hrs
Forest Boundary						



Incident Action Plan
Page: 6
Woodbury Fire
 AZ-TNF-000579
 6/29/2019 Day

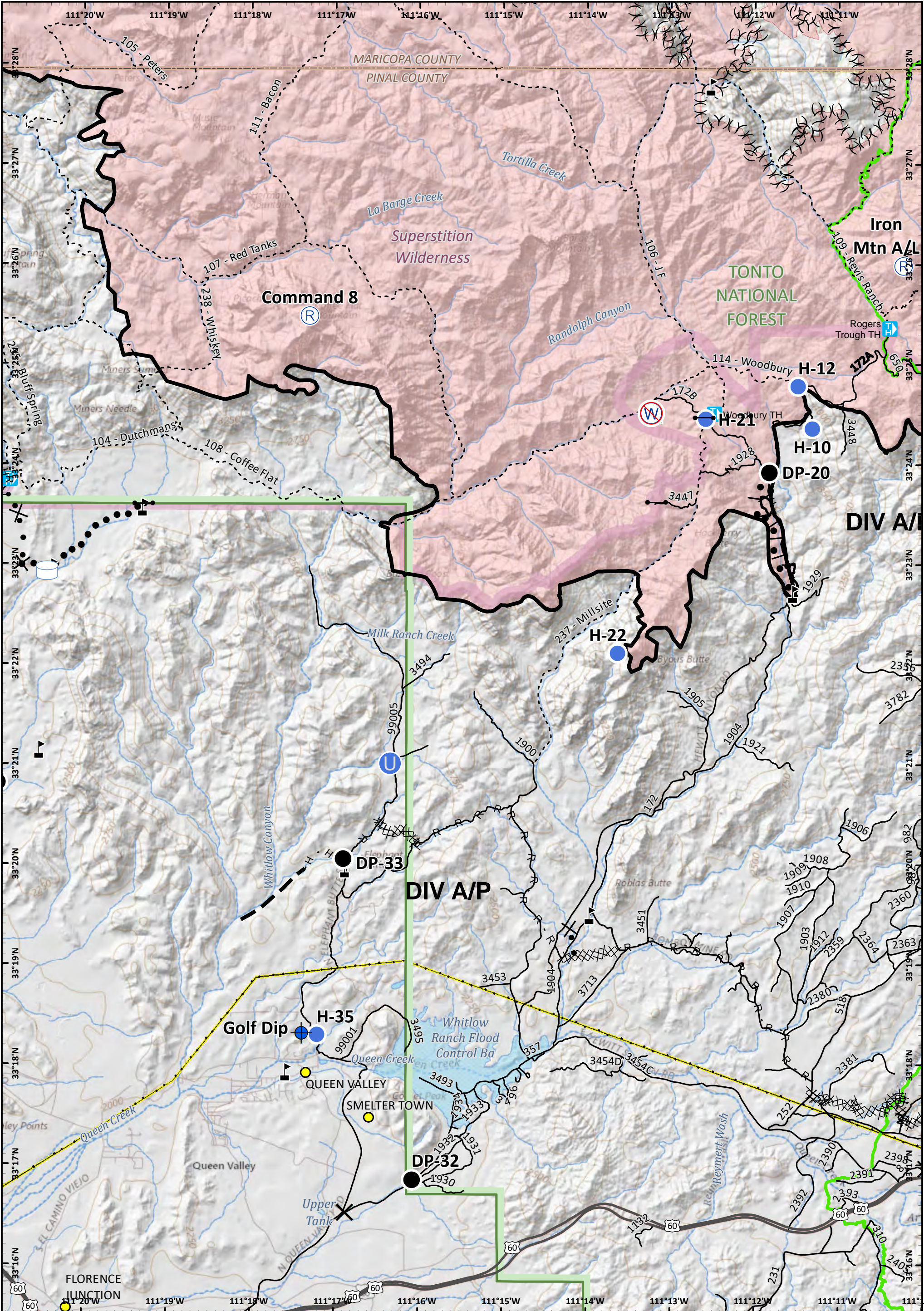
- | | | | |
|------------------------|----------------------------|----------------------------------|-------------------------------|
| Pump | H - Completed Hand Line | Fire Break Planned or Incomplete | U.S. Highway |
| Water Tank | R - Road as Completed Line | Planned Fire Line | State Highway |
| Uncontrolled Fire Edge | Access or Improved Road | Highlighted Manmade Feature | Road |
| Completed Line | Line Break Completed | Ridge/Geographic Feature | Trail |
| Completed Dozer Line | Proposed Burnout | Cities | Arizona National Scenic Trail |
| Proposed Dozer Line | Trailhead | County | Forest Boundary |
| | | Wilderness | Transmission Lines |

Southwest Area Incident Management Team

Approx 123,590 acres (IR)
6/27/19 2137 hrs

0 0.5 1 Miles

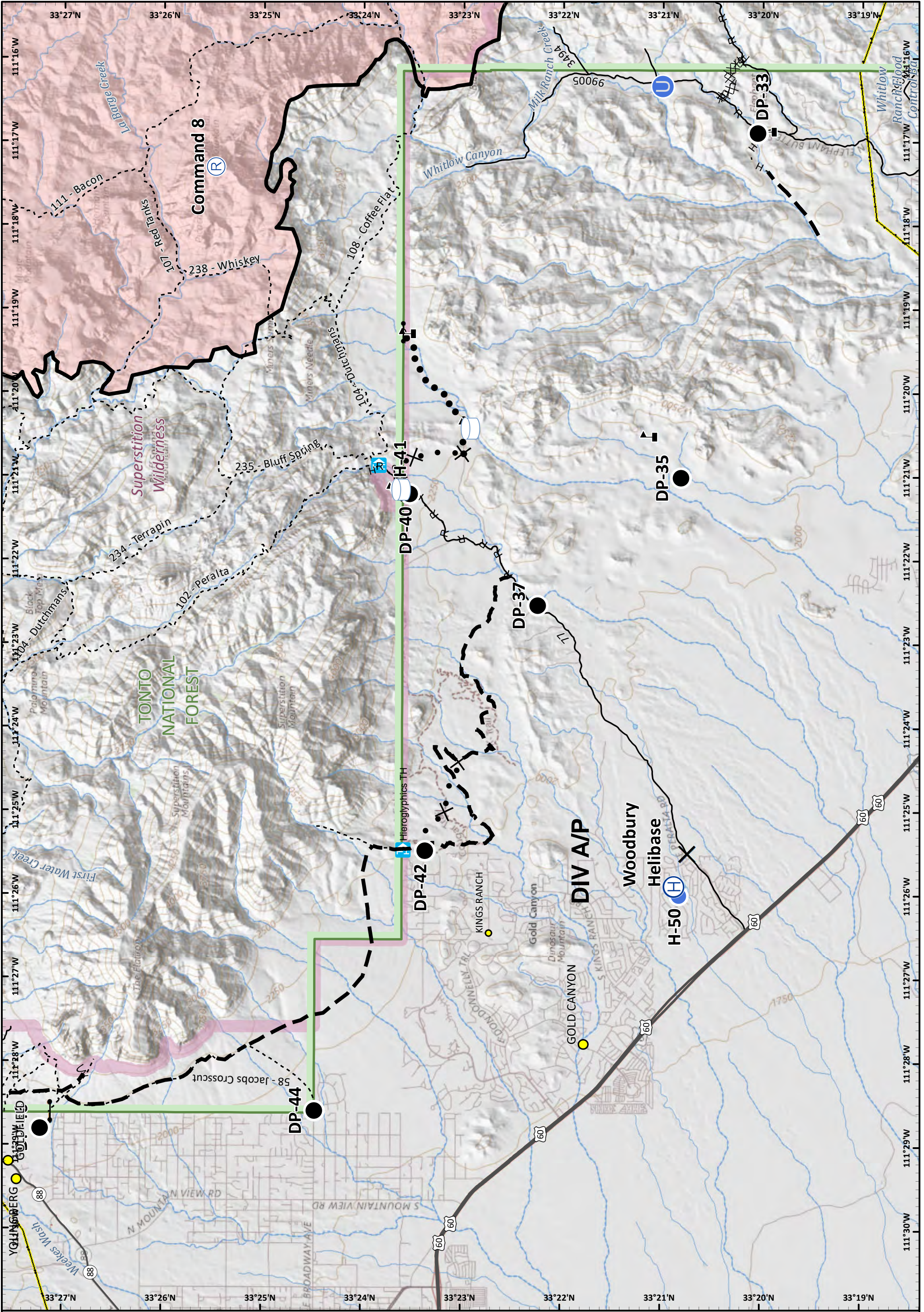
NAD 1983 UTM Zone 12N
Prepared by: Admin
6/28/2019 1850 hrs



Incident Action Plan
Page: 7

Woodbury Fire
 AZ-TNF-000579
 6/29/2019 Day

Water Tank	Completed Burnout	Trailhead	Waterbody	Gate	Restricted Water Source
Completed Line	Proposed Dozer Line	U.S. Highway	Stream	Closure	Unimproved Landing Area
Completed Dozer Line	Planned Fire Line	Road	Closure	Dip Site	Value at Risk
H - Completed Hand Line	Planned Secondary Line	Trail	Arizona National Scenic Trail	Helispot	North Arrow
R - Road as Completed Line	Ridge/Geographic Feature	County	Forest Boundary	Drop Point	0 0.5 1 Miles
Cities	Wilderness	Transmission Lines	Repeater		

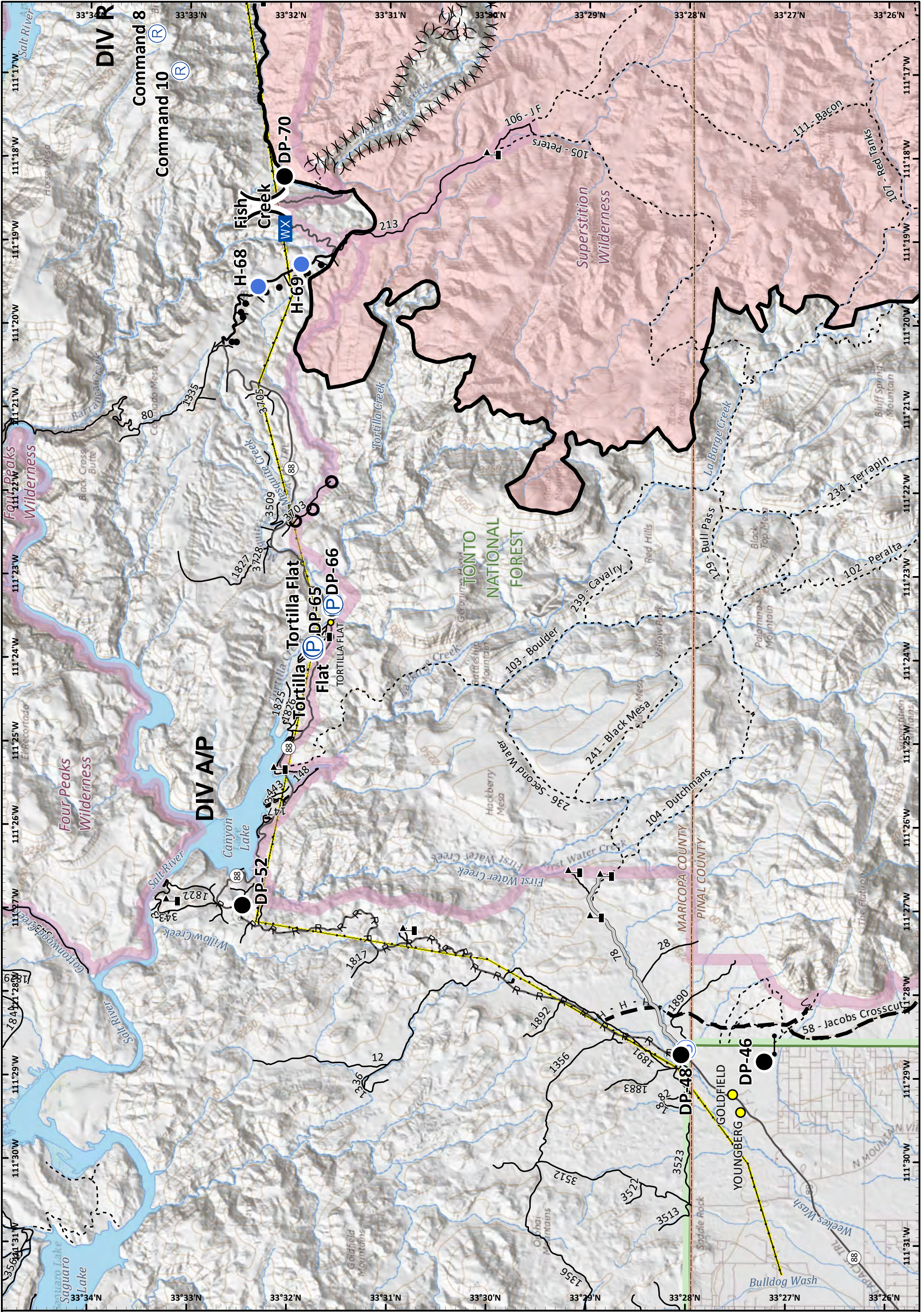


- | | | | | | |
|----------------------------|----------------------------------|--------------------|------------|-------------------------|---------------|
| Water Tank | Proposed Dozer Line | U.S. Highway | Stream | Helibase | Value at Risk |
| Completed Line | Fire Break Planned or Incomplete | State Highway | Closure | Unimproved Landing Area | |
| Completed Dozer Line | Planned Fire Line | Road | Dip Site | Helispot | |
| H - Completed Hand Line | Planned Secondary Line | Trail | Drop Point | Repeater | |
| R - Road as Completed Line | Cities | County | Gate | | |
| | Towns | Forest Boundary | | | |
| Trailhead | Wilderness | Transmission Lines | | | |
| | Waterbody | Waterbody | | | |

Approx 123,590 acres (IR)
6/27/19 2137 hrs

0 0.5 1
Miles

NAD 1983 UTM Zone 12N
Prepared by: Admin
6/28/2019 1850 hrs



Incident Action Plan

Page: 9

Woodbury Fire

AZ-TNF-000579
6/29/2019 Day

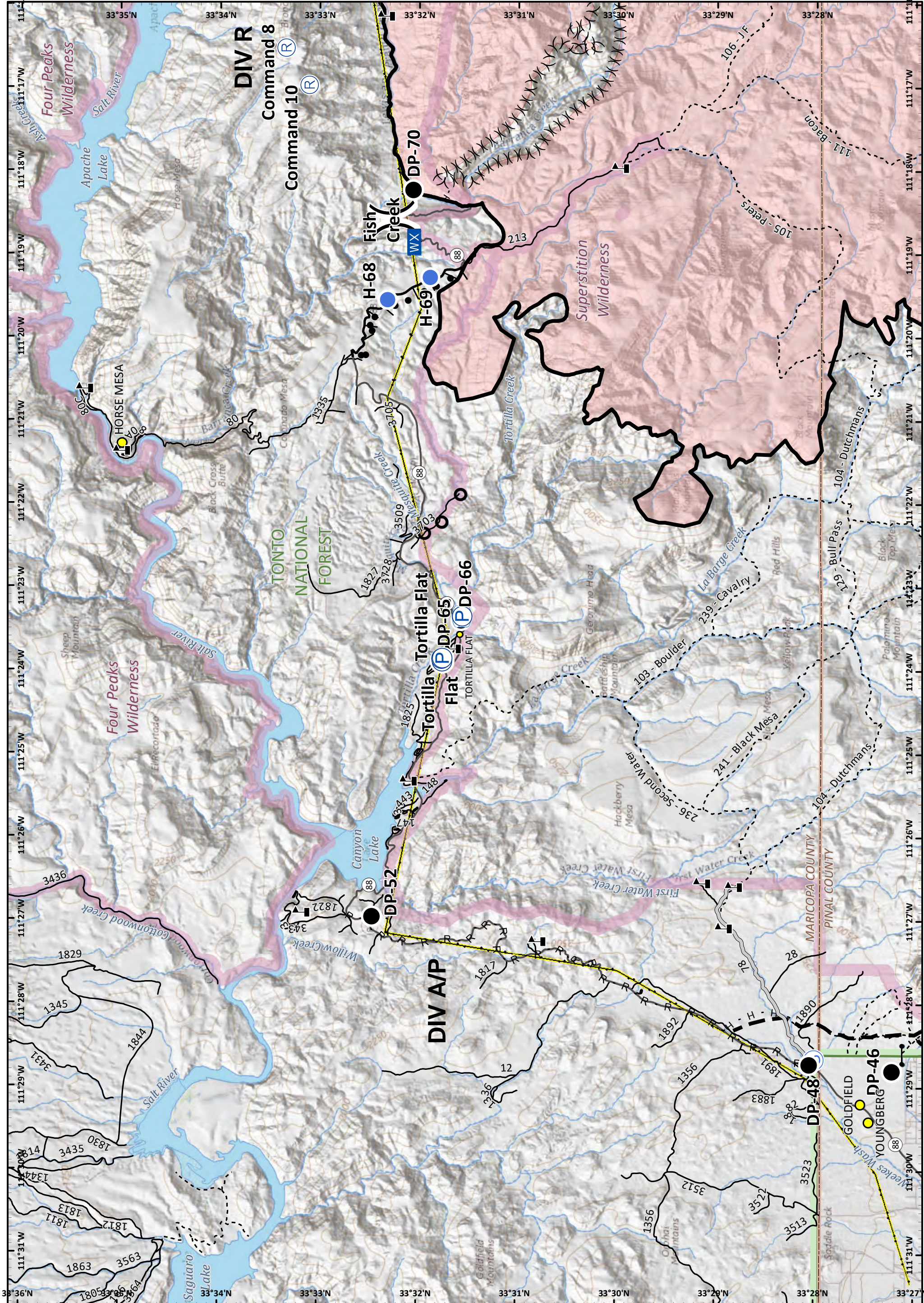
- | | | | | | |
|------------------------|----------------------------------|-----------------|------------|---------------------|----------------|
| Pump | Access or Improved Road | State Highway | Camp | Gate | Staging Area |
| Water Tank | Road | Trail | Closure | Helispot | Value at Risk |
| Completed Line | Fire Break Planned or Incomplete | County | Culvert | Mobile Weather Unit | Division Break |
| Completed Hand Line | Planned Fire Line | Forest Boundary | Drop Point | Repeater | |
| Road as Completed Line | Ridge/Geographic Feature | Wilderness | | | |
| Cities | Transmission Lines | Waterbody | | | |
| Towns | Stream | | | | |



Approx 123,590 acres (IR)
6/27/19 2137 hrs



NAD 1983 UTM Zone 12N
Prepared by: Admin
6/28/2019 1850 hrs



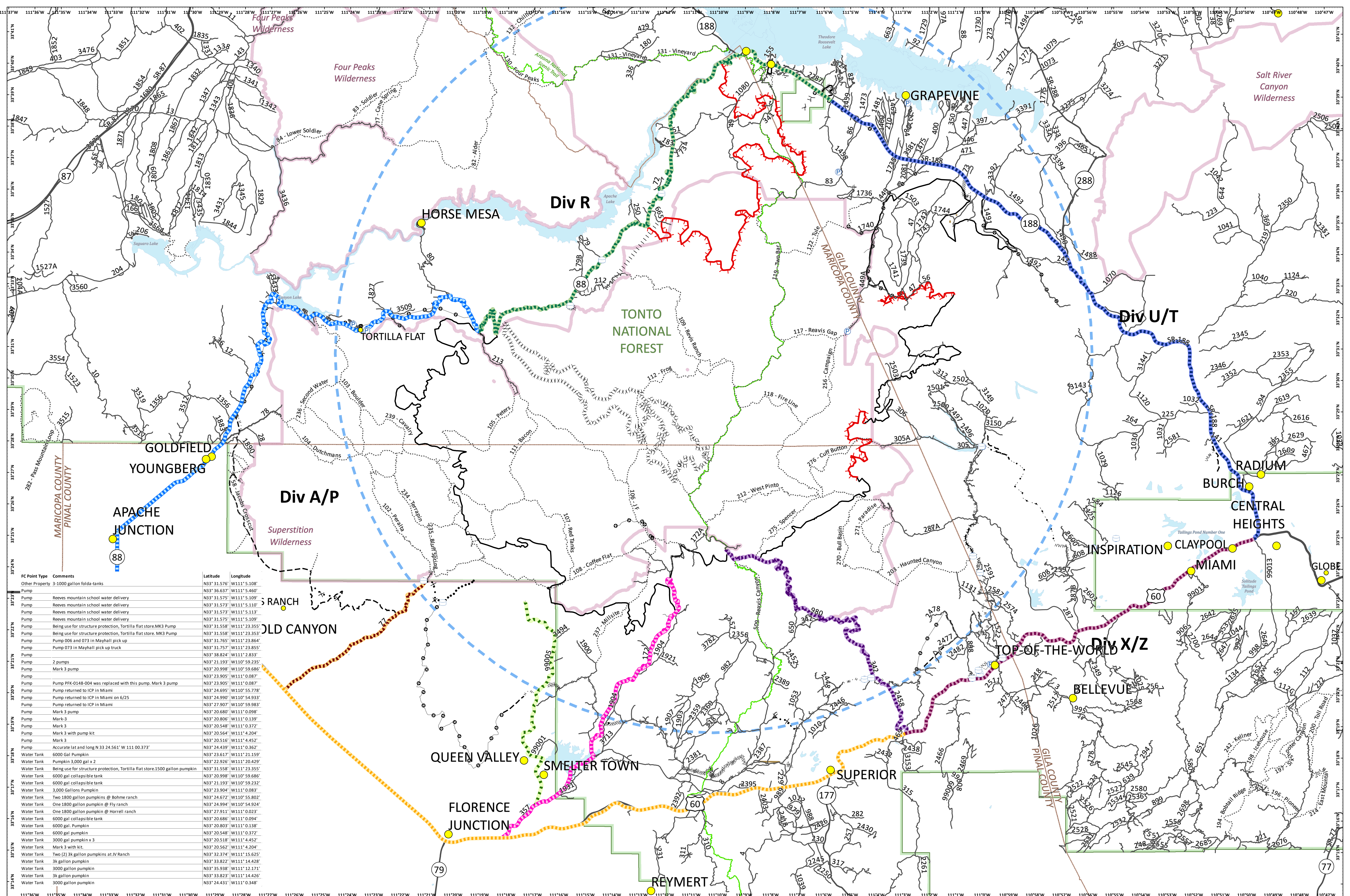
Incident Action Plan
Page: 10
Woodbury Fire
 AZ-TNF-000579
 6/29/2019 Day

- | | | | | | |
|------------------------|--------------------------|--------------------|------------|---------------------|----------------|
| Pump | Access or Improved Road | Trail | Closure | Mobile Weather Unit | Division Break |
| Water Tank | Completed Burnout | County | Culvert | Repeater | |
| Completed Line | Planned Fire Line | Forest Boundary | Drop Point | Staging Area | |
| Completed Hand Line | Ridge/Geographic Feature | Wilderness | Gate | Value at Risk | |
| Road as Completed Line | Cities | Transmission Lines | Helispot | | |
| Road | Towns | Waterbody | | | |
| | State Highway | Stream | | | |
| | Camp | | | | |

Approx 123,590 acres (IR)
 6/27/19 2137 hrs

0 0.5 1
 Miles

NAD 1983 UTM Zone 12N
 Prepared by: Admin
 6/28/2019 1850 hrs



FC Point Type	Comments	Latitude	Longitude
Other Property 3-1000 gallon fold-a-tanks			
Pump	Reeves mountain school water delivery	N33° 31.576'	W111° 5.108'
Pump	Reeves mountain school water delivery	N33° 31.575'	W111° 5.109'
Pump	Reeves mountain school water delivery	N33° 31.573'	W111° 5.113'
Pump	Reeves mountain school water delivery	N33° 31.575'	W111° 5.109'
Pump	Being use for structure protection, Tortilla flat store.MK3 Pump	N33° 31.558'	W111° 23.355'
Pump	Being use for structure protection, Tortilla flat store.MK3 Pump	N33° 31.558'	W111° 23.353'
Pump	Pump 006 and 073 in Mayhall pick up	N33° 31.765'	W111° 23.864'
Pump	Pump 073 in Mayhall pick up truck	N33° 31.757'	W111° 23.855'
Pump		N33° 38.824'	W111° 2.833'
Pump	2 pumps	N33° 21.193'	W110° 59.235'
Pump	Mark 3 pump	N33° 20.998'	W110° 59.686'
Pump		N33° 23.905'	W111° 0.087'
Pump	Pump PFK-0148-004 was replaced with this pump. Mark 3 pump	N33° 23.905'	W111° 0.087'
Pump	Pump returned to ICP in Miami	N33° 24.695'	W110° 55.778'
Pump	Pump returned to ICP in Miami on 6/25	N33° 24.990'	W110° 54.933'
Pump	Pump returned to ICP in Miami	N33° 27.907'	W110° 59.983'
Pump	Mark 3 pump	N33° 20.680'	W111° 0.098'
Pump	Mark 3	N33° 20.806'	W111° 0.139'
Pump	Mark 3 with pump kit	N33° 20.548'	W111° 0.372'
Pump	Mark 3	N33° 20.564'	W111° 4.204'
Pump	Mark 3	N33° 20.516'	W111° 4.452'
Pump	Accurate lat and long N 33 24.561' W 111 00.373'	N33° 24.439'	W111° 0.362'
Water Tank	6000 Gal Pumpkin	N33° 23.617'	W111° 21.159'
Water Tank	Pumpkin 3,000 gal x 2	N33° 22.926'	W111° 20.429'
Water Tank	Being use for structure protection, Tortilla flat store.1500 gallon pumpkin	N33° 31.558'	W111° 23.355'
Water Tank	6000 gal collapsible tank	N33° 20.998'	W110° 59.686'
Water Tank	6000 gal collapsible tank	N33° 21.193'	W110° 59.232'
Water Tank	3,000 gallons Pumpkin	N33° 23.904'	W111° 0.083'
Water Tank	Two 1800 gallon pumpkins @ Bohme ranch	N33° 24.672'	W110° 55.802'
Water Tank	One 1800 gallon pumpkin @ Fly ranch	N33° 24.994'	W110° 54.924'
Water Tank	One 1800 gallon pumpkin @ Horrell ranch	N33° 27.911'	W111° 0.023'
Water Tank	6000 gal collapsible tank	N33° 20.686'	W111° 0.094'
Water Tank	6000 gal. Pumpkin	N33° 20.803'	W111° 0.138'
Water Tank	6000 gal. Pumpkin	N33° 20.548'	W111° 0.372'
Water Tank	3000 gal. Pumpkin x 3	N33° 20.518'	W111° 4.452'
Water Tank	Mark 3 with kit	N33° 20.562'	W111° 4.204'
Water Tank	Two 3k gallon pumpkins at JV Ranch	N33° 32.374'	W111° 15.625'
Water Tank	3k gallon pumpkin	N33° 33.822'	W111° 14.428'
Water Tank	3000 gallon pumpkin	N33° 35.938'	W111° 12.171'
Water Tank	3k gallon pumpkin	N33° 33.823'	W111° 14.426'
Water Tank	3000 gallon pumpkin	N33° 24.431'	W111° 0.348'

Woodbury Fire

AZ-TNF-000579
6/29/19 Day

Transportation

● Cities	— U.S. Highway	— Arizona National Scenic Trail	— Completed Hand Line	— Proposed Burnout	— Planned Secondary Line	— Repair Line	— Forest Boundary	Travel Time to ICP	Approx 123,590 (IR) acres 6/27/19 2127 hrs	
⊕ Pump	— State Highway	— Uncontrolled Fire Edge	— Road as Completed Line	— Proposed Dozer Line	— Temporary Flight Restriction	— Other	— Waterbody	20 Minutes		 <small>NAD 1983 UTM Zone 12N Prepared by: Admin 6/28/2019 1859 hrs</small>
● Other Property	— Road	— Completed Line	— Access or Improved Road	— Fire Break Planned or Incomplete	— Highlighted Manmade Feature	— Wilderness	35 Minutes	20 Minutes		
⊕ Water Tank	— Trail	— Completed Dozer Line	— Line Break Completed	— Planned Fire Line	— Ridge/Geographic Feature	— County	50 Minutes	25 Minutes		
							1 Hr 30 Minutes	35 Minutes		
							1 Hr 15 Minutes	55 Minutes		