

**Incident Action Plan**  
Page: 1

**Woodbury Fire**  
AZ-TNF-000579  
6/29/2019 Day

Pump	Proposed Burnout	Arizona National Scenic Trail	Camp	Unimproved Landing Area	Value at Risk
Water Tank	Completed Burnout	County	Closure	Helispot	Division Break
Completed Line	Ridge/Geographic Feature	Forest Boundary	Culvert	Mobile Weather Unit	
Completed Dozer Line	Cities	Wilderness	Drop Point	Repeater	
Completed Hand Line	Towns	Transmission Lines			
	State Highway	Waterbody			
	Road	Stream			

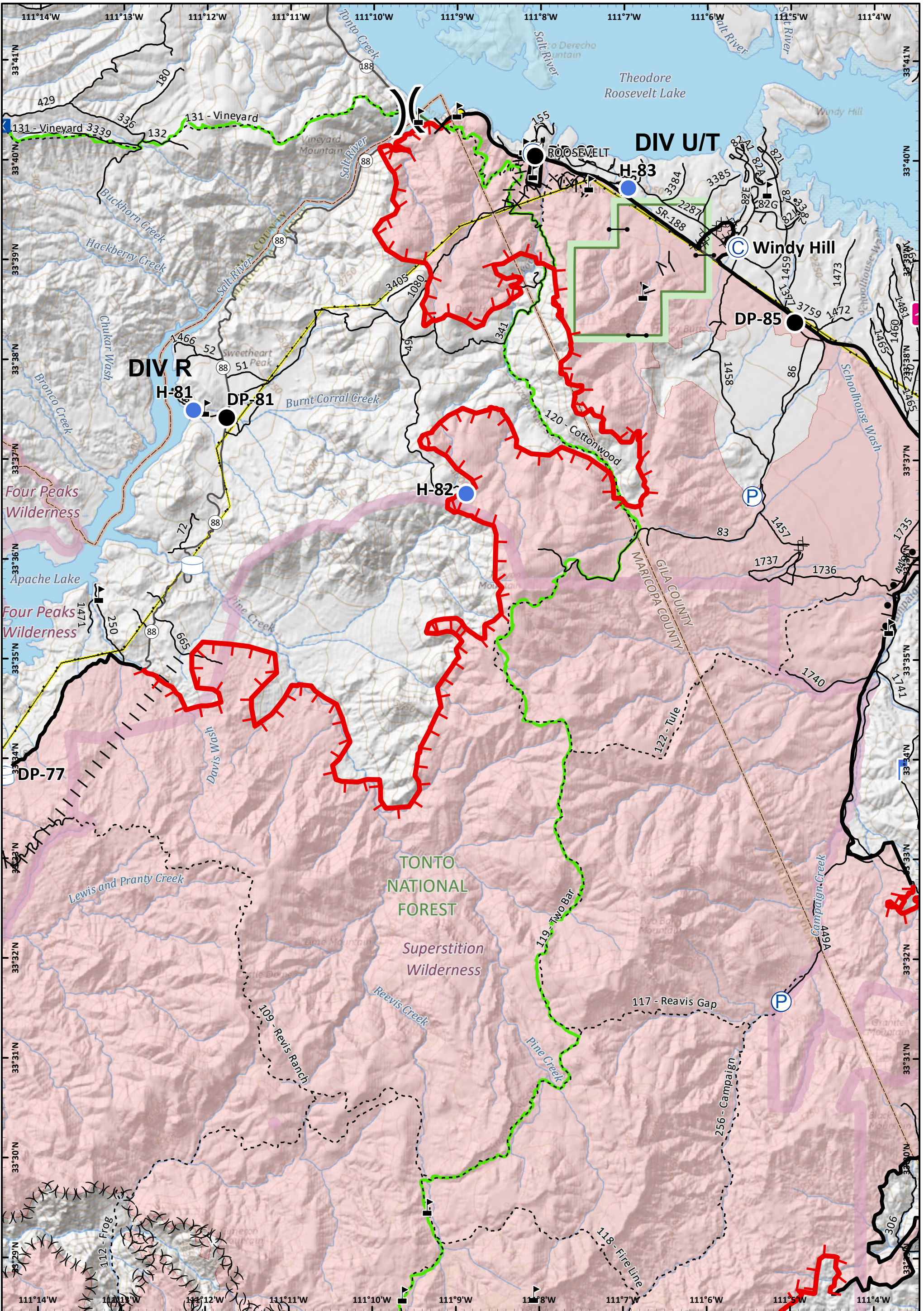
SOUTHWEST AREA INCIDENT MANAGEMENT TEAM

Approx 123,590 acres (IR)  
6/27/19 2137 hrs

0 0.5 1  
Miles

NAD 1983 UTM Zone 12N  
Prepared by: Admin  
6/28/2019 1850 hrs





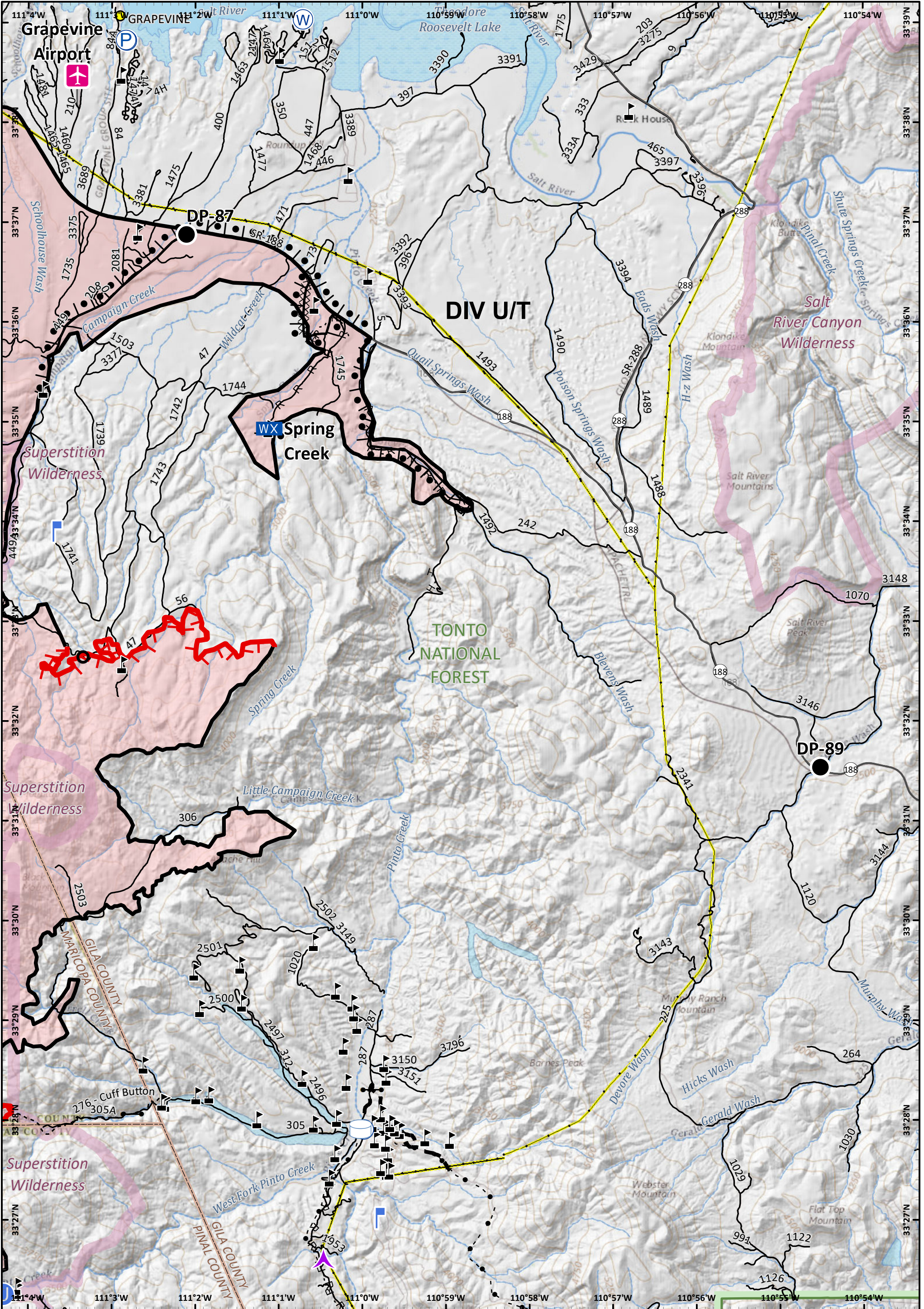
**Incident Action Plan**  
 Page: 2

**Woodbury Fire**  
 AZ-TNF-000579  
 6/29/2019 Day

Pump	Completed Dozer Line	Towns	Waterbody	Drop Point	Mobile Weather Unit	Division Break
Other Property	Completed Hand Line	State Highway	Stream	Airstrip or Airport	Gate	Road Repair
Water Tank	Proposed Burnout	Road	Arizona National Scenic Trail	Helispot	Camp	Water Source
Uncontrolled Fire Edge	Completed Burnout	Trail	County	Lookout	Value at Risk	
Completed Line	Ridge/Geographic Feature	Forest Boundary	Wilderness	Closure		
Cities		Transmission Lines				

Approx 123,590 acres (IR)  
 6/27/19 2137 hrs  
 0 0.5 1  
 Miles  
NAD 1983 UTM Zone 12N  
 Prepared by: Admin  
 6/28/2019 1850 hrs





**Incident Action Plan**  
 Page: 3

**Woodbury Fire**  
 AZ-TNF-000579  
 6/29/2019 Day

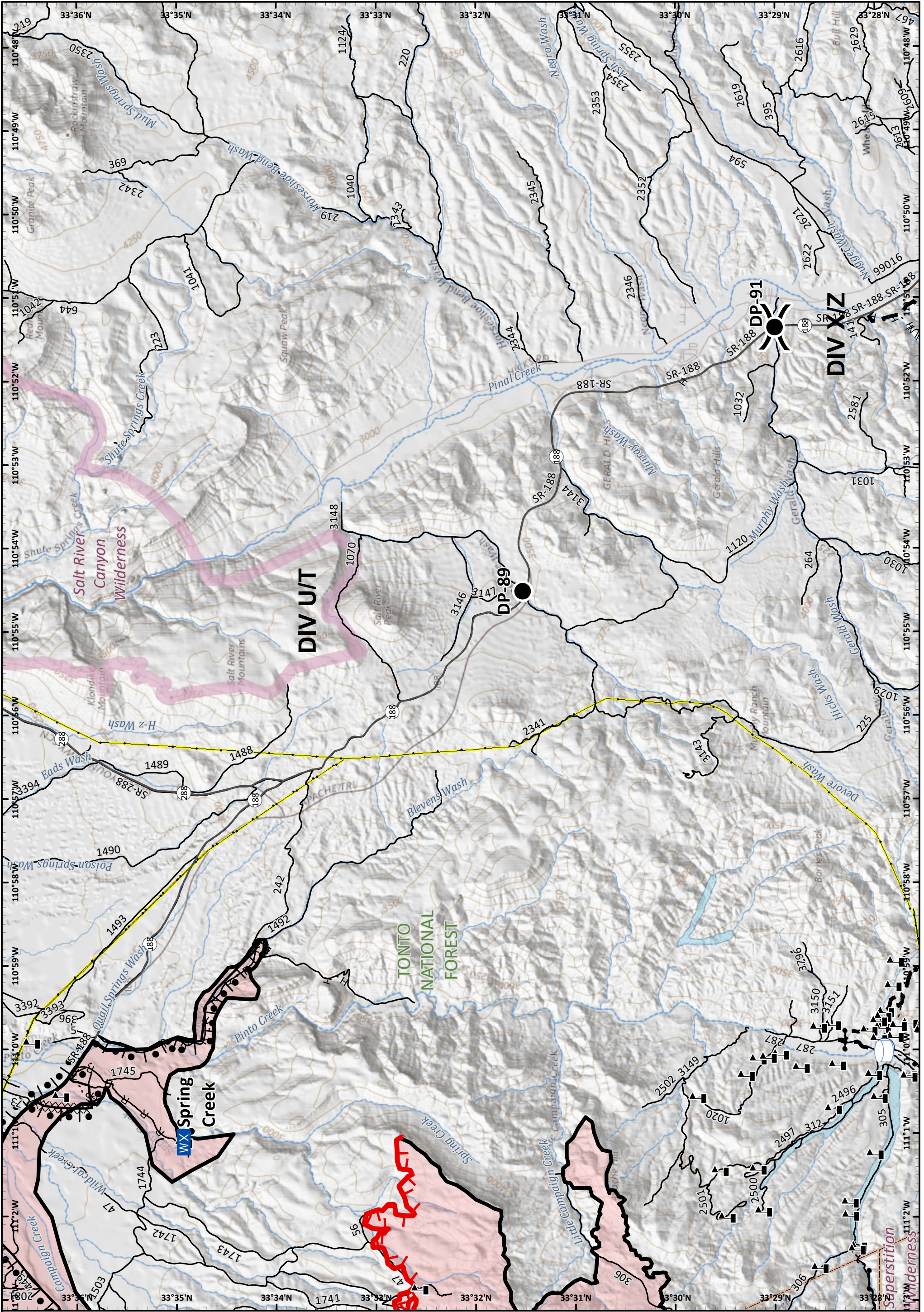
Pump	H - Completed Hand Line	State Highway	Aerial Hazard	Gate	Water Source
Water Tank	R - Road as Completed Line	Road	Airstrip or Airport	Unimproved Landing Area	Value at Risk
Uncontrolled Fire Edge	Completed Burnout	Trail	Culvert	Lookout	Mobile Weather Unit
Completed Line	Planned Fire Line	County	Drop Point		
Completed Dozer Line	Highlighted Manmade Feature	Forest Boundary			
	Cities	Wilderness			
		Transmission Lines			
		Waterbody			
		Stream			

Approx 123,590 acres (IR)  
 6/27/19 2137 hrs

0 0.5 1  
 Miles

NAD 1983 UTM Zone 12N  
 Prepared by: Admin  
 6/28/2019 1850 hrs





**Incident Action Plan**  
 Page: 4

**Woodbury Fire**  
 AZ-TNF-000579  
 6/29/2019 Day

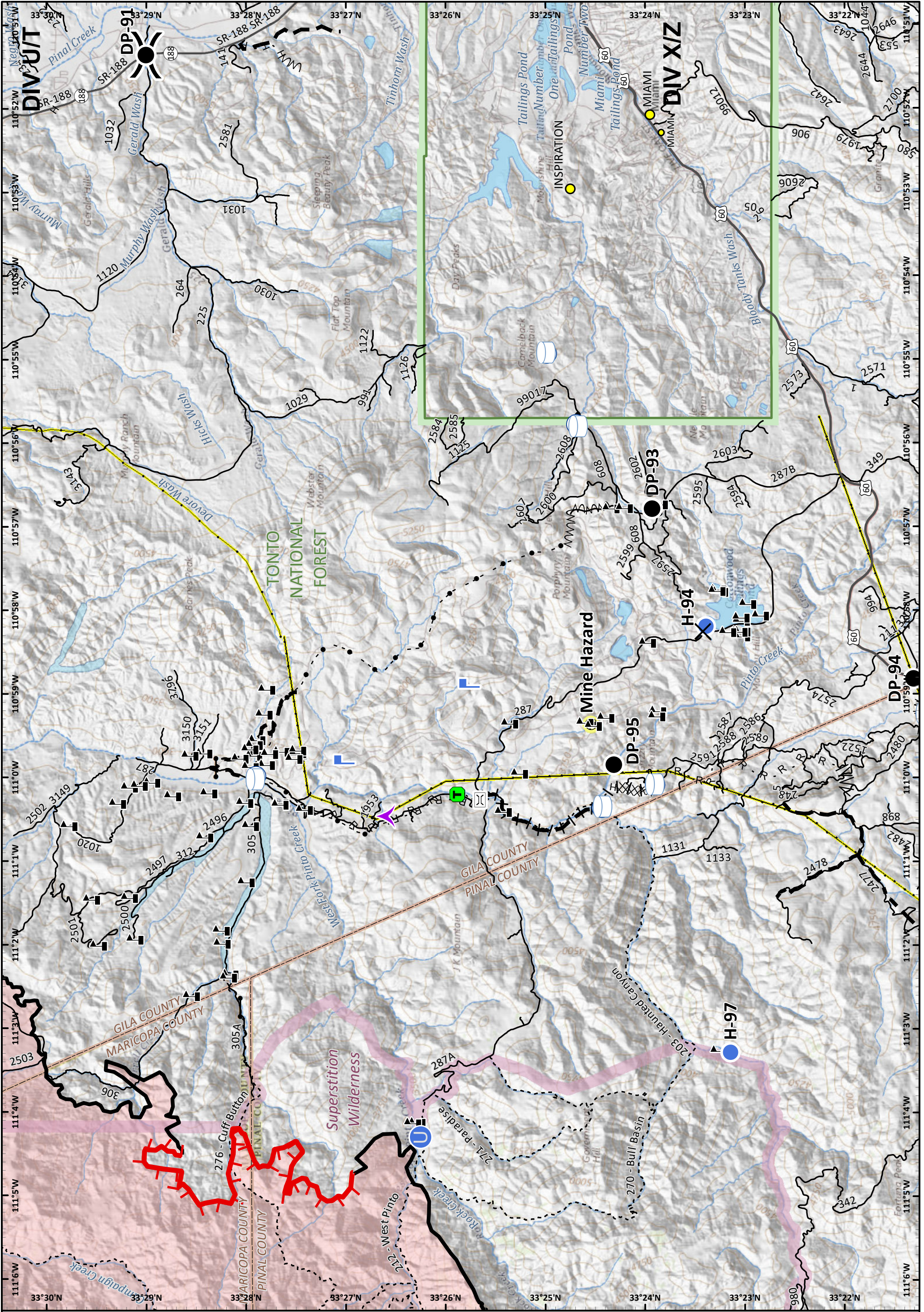
Pump	H - Completed Hand Line	State Highway	Drop Point	Division Break
Water Tank	R - Road as Completed Line	Road	Gate	
Uncontrolled Fire Edge	Completed Burnout	Trail	WX Mobile Weather Unit	
Completed Line	Fire Break Planned or Incomplete	County	Value at Risk	
Completed Dozer Line	Planned Fire Line	Forest Boundary		
Highlighted Manmade Feature	Highlighted Manmade Feature	Wilderness		
		Transmission Lines		
		Waterbody		
		Stream		

Approx 123,590 acres (IR)  
 6/27/19 2137 hrs

0 0.5 1  
 Miles

NAD 1983 UTM Zone 12N  
 Prepared by: Admin  
 6/28/2019 1850 hrs



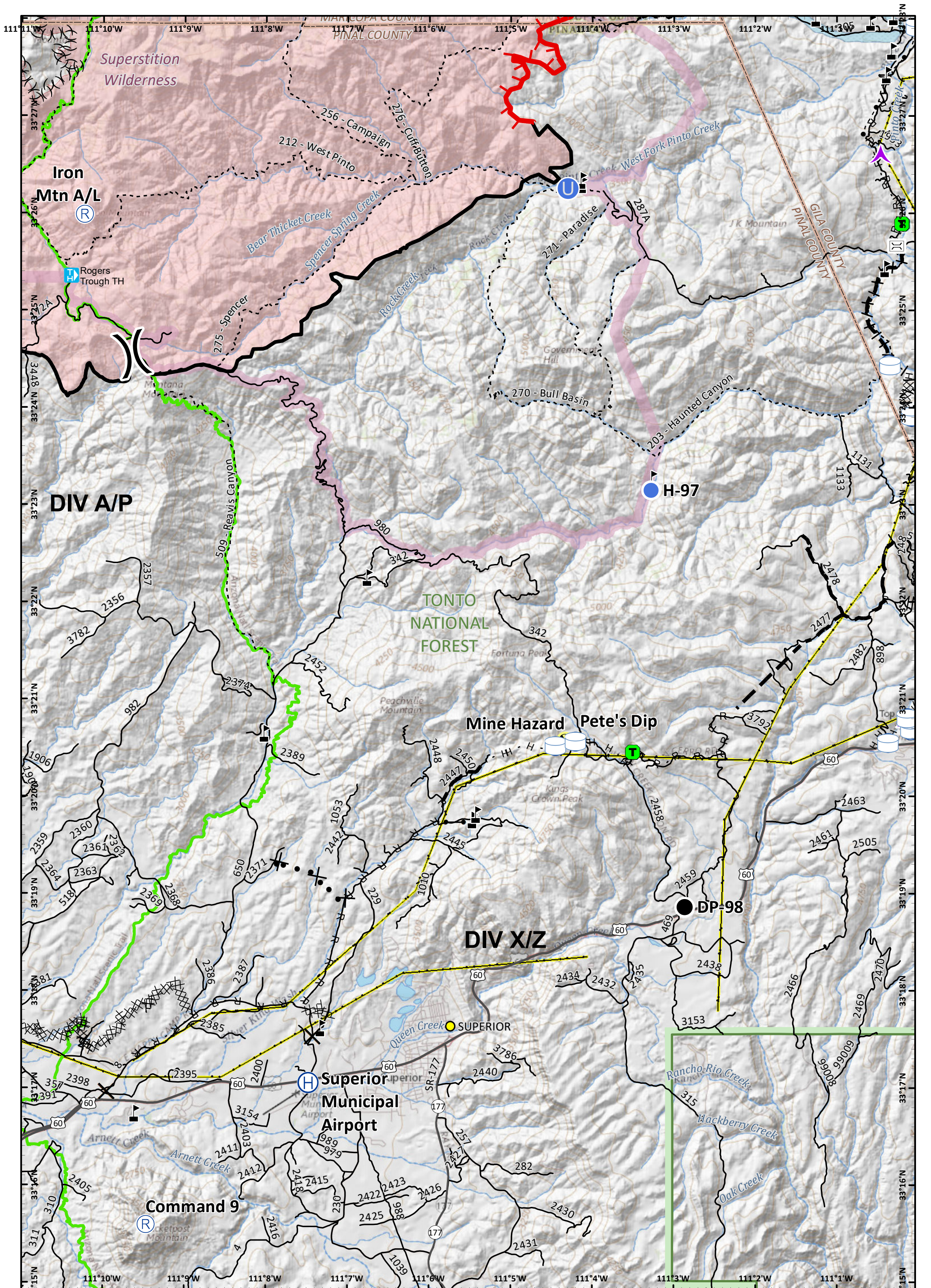


**Incident Action Plan**  
Page: 5

**Woodbury Fire**  
AZ-TNF-000579  
6/29/2019 Day

Pump	H - Completed Hand Line	Highlighted Manmade Feature	Wilderness	Clean Up Area	Unimproved Landing Area	Division Break
Water Tank	R - Road as Completed Line	Cities	Transmission Lines	Closure	Helispot	Approx 123,590 acres (IR)
Uncontrolled Fire Edge	Line Break Completed	Towns	Waterbody	Drop Point	Lookout	0 0.5 1 Miles
Completed Line	Proposed Burnout	U.S. Highway	Stream	Gate	Value at Risk	SOUTHWEST AREA INCIDENT MANAGEMENT TEAM
Completed Dozer Line	Fire Break Planned or Incomplete	Road	Aerial Hazard	Hazard		NAD 1983 UTM Zone 12N Prepared by: Admin 6/28/2019 1850 hrs
Planned Fire Line	Forest Boundary	Trail	Bridge			





**Incident Action Plan**  
 Page: 6  
**Woodbury Fire**  
 AZ-TNF-000579  
 6/29/2019 Day

- |                        |                            |                                  |                               |
|------------------------|----------------------------|----------------------------------|-------------------------------|
| Pump                   | H - Completed Hand Line    | Fire Break Planned or Incomplete | U.S. Highway                  |
| Water Tank             | R - Road as Completed Line | Planned Fire Line                | State Highway                 |
| Uncontrolled Fire Edge | Access or Improved Road    | Highlighted Manmade Feature      | Road                          |
| Completed Line         | Line Break Completed       | Ridge/Geographic Feature         | Trail                         |
| Completed Dozer Line   | Proposed Burnout           | Cities                           | Arizona National Scenic Trail |
| Proposed Dozer Line    | Trailhead                  | County                           | Forest Boundary               |
|                        |                            | Wilderness                       | Transmission Lines            |

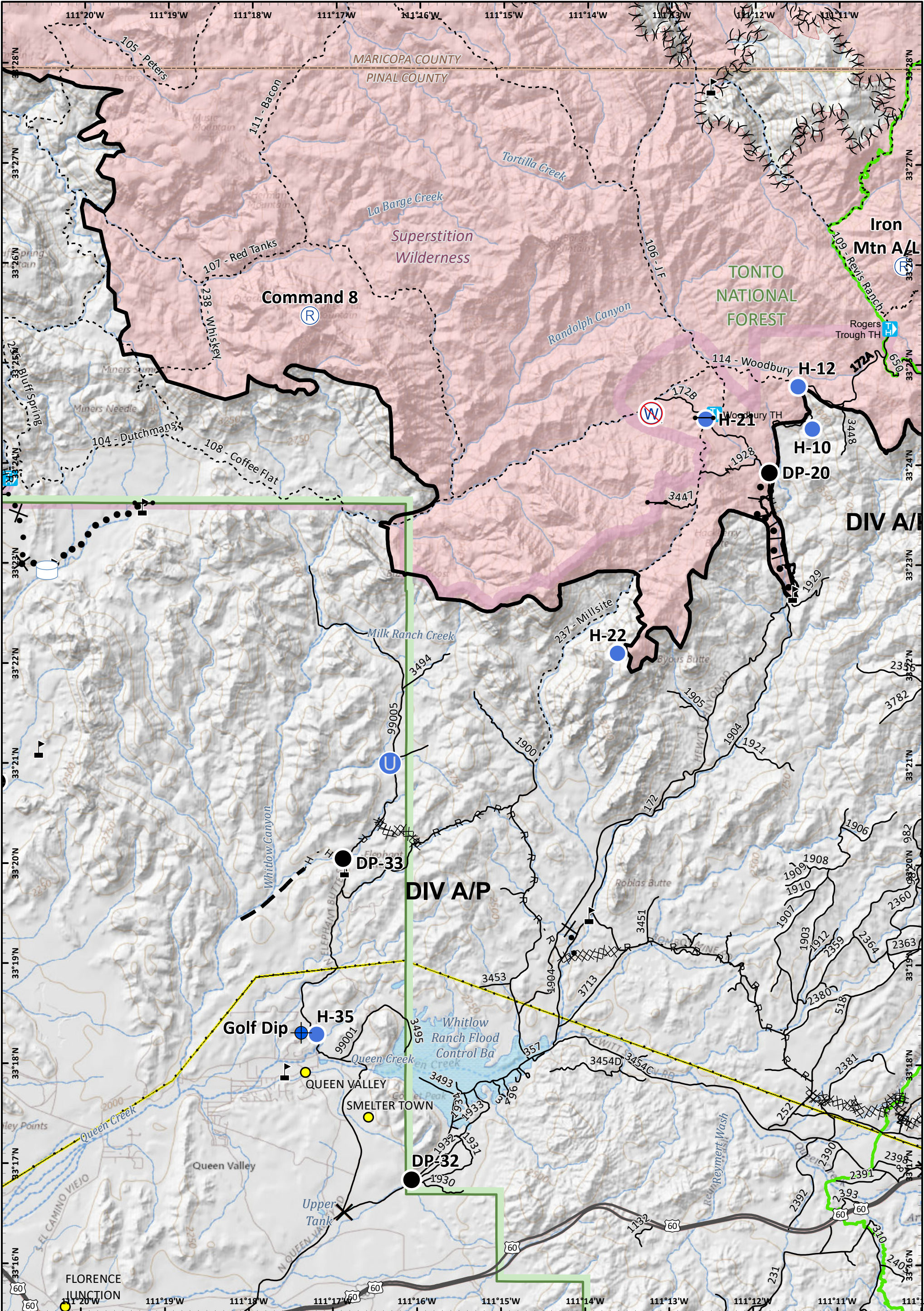
SOUTHWEST AREA INCIDENT MANAGEMENT TEAM

Approx 123,590 acres (IR)  
 6/27/19 2137 hrs

0 0.5 1  
 Miles

NAD 1983 UTM Zone 12N  
 Prepared by: Admin  
 6/28/2019 1850 hrs





**Incident Action Plan**  
**Page: 7**

**Woodbury Fire**  
 AZ-TNF-000579  
 6/29/2019 Day

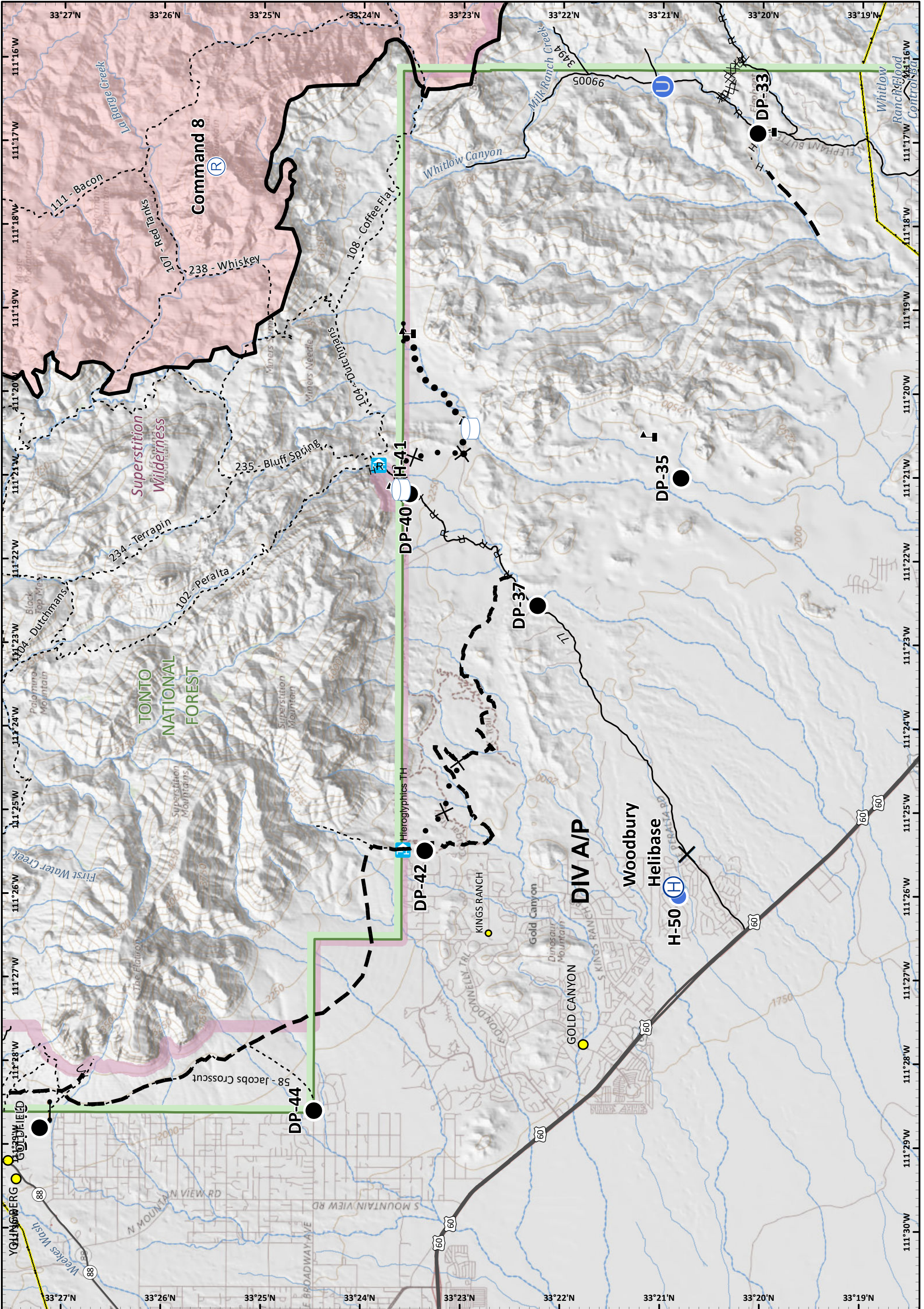
Water Tank	Completed Burnout	Trailhead	Waterbody	Gate	Restricted Water Source
Completed Line	Proposed Dozer Line	U.S. Highway	Stream	Closure	Unimproved Landing Area
Completed Dozer Line	Planned Fire Line	Road	Closure	Dip Site	Value at Risk
H - Completed Hand Line	Planned Secondary Line	Trail	Arizona National Scenic Trail	Helispot	
R - Road as Completed Line	Ridge/Geographic Feature	County	Forest Boundary	Drop Point	Repeater
	Cities	Wilderness	Transmission Lines		

Approx 123,590 acres (IR)  
 6/27/19 2137 hrs

0 0.5 1  
 Miles

NAD 1983 UTM Zone 12N  
 Prepared by: Admin  
 6/28/2019 1850 hrs





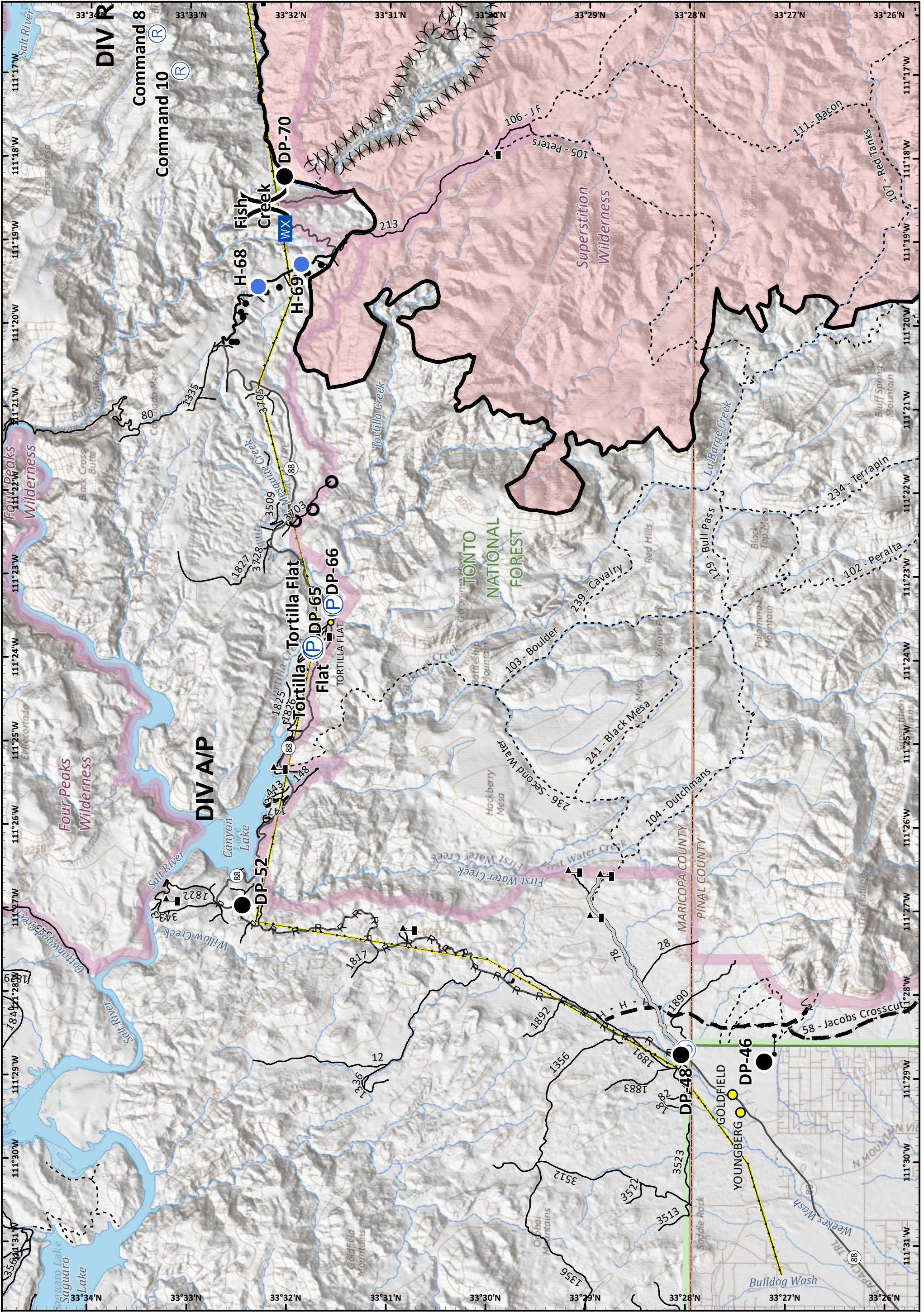
- |                            |                                  |                    |          |                         |               |
|----------------------------|----------------------------------|--------------------|----------|-------------------------|---------------|
| Water Tank                 | Proposed Dozer Line              | U.S. Highway       | Stream   | Helibase                | Value at Risk |
| Completed Line             | Fire Break Planned or Incomplete | State Highway      | Closure  | Unimproved Landing Area |               |
| Completed Dozer Line       | Planned Fire Line                | Road               | Dip Site | Drop Point              | Repeater      |
| H - Completed Hand Line    | Planned Secondary Line           | Trail              | Helispot |                         |               |
| R - Road as Completed Line | Cities                           | County             | Gate     |                         |               |
| Trailhead                  | Towns                            | Forest Boundary    |          |                         |               |
|                            | Waterbody                        | Wilderness         |          |                         |               |
|                            |                                  | Transmission Lines |          |                         |               |



Approx 123,590 acres (IR)  
6/27/19 2137 hrs







**Incident Action Plan**

Page: 9

**Woodbury Fire**  
 AZ-TNF-000579  
 6/29/2019 Day

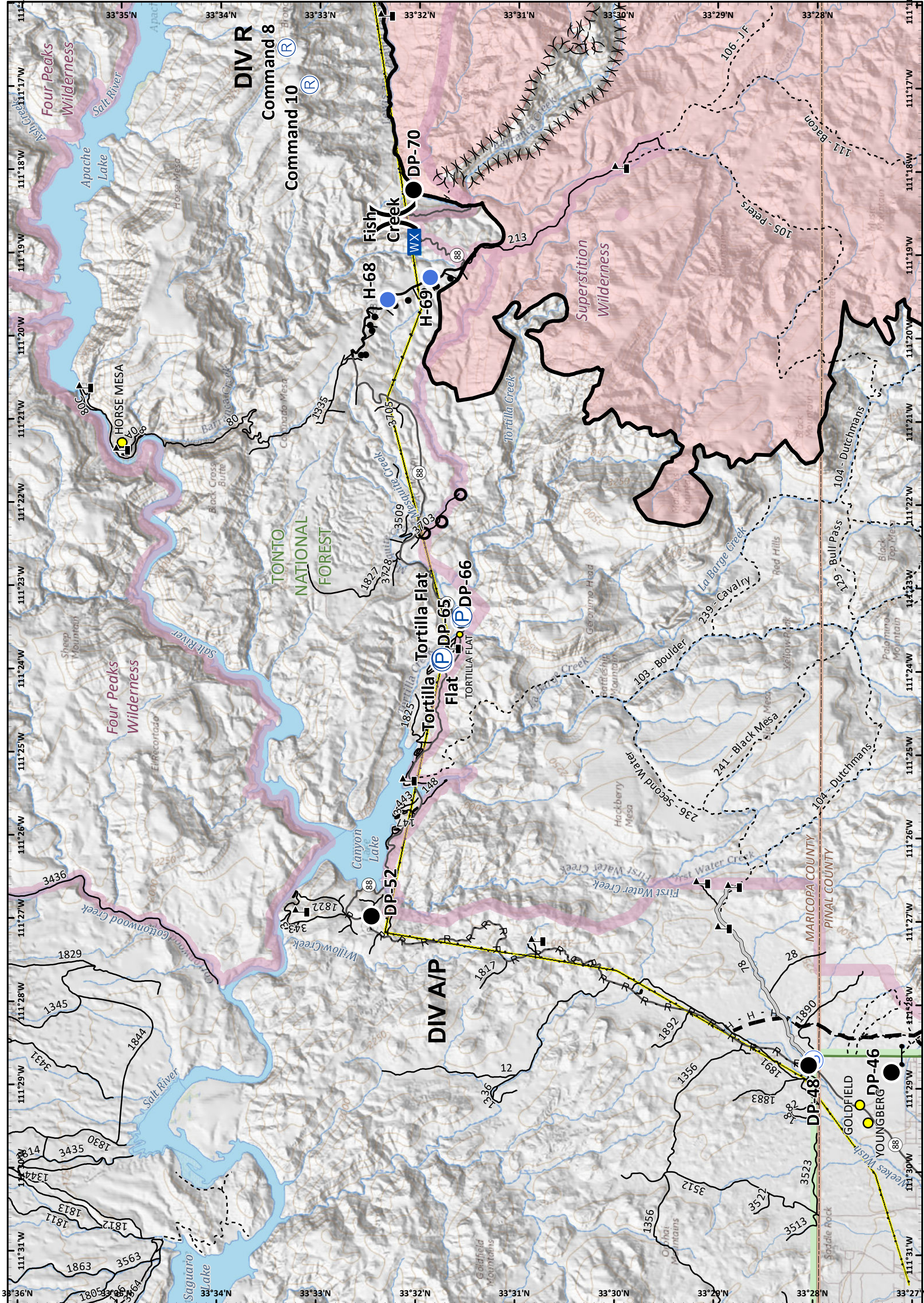
- |                            |                                  |                    |            |                     |                |
|----------------------------|----------------------------------|--------------------|------------|---------------------|----------------|
| Pump                       | Access or Improved Road          | State Highway      | Camp       | Gate                | Staging Area   |
| Water Tank                 | Completed Burnout                | Road               | Closure    | Helispot            | Value at Risk  |
| Completed Line             | Fire Break Planned or Incomplete | Trail              | Culvert    | Mobile Weather Unit | Division Break |
| H - Completed Hand Line    | Planned Fire Line                | County             | Drop Point | Repeater            |                |
| R - Road as Completed Line | Ridge/Geographic Feature         | Forest Boundary    |            |                     |                |
|                            | Wilderness                       | Transmission Lines |            |                     |                |
|                            | Waterbody                        | Stream             |            |                     |                |
|                            | Cities                           |                    |            |                     |                |
|                            | Towns                            |                    |            |                     |                |

Approx 123,590 acres (IR)  
 6/27/19 2137 hrs

0 0.5 1  
 Miles

NAD 1983 UTM Zone 12N  
 Prepared by: Admin  
 6/28/2019 1850 hrs





**Incident Action Plan**  
 Page: 10  
**Woodbury Fire**  
 AZ-TNF-000579  
 6/29/2019 Day

- |                        |                          |                    |            |                     |                |
|------------------------|--------------------------|--------------------|------------|---------------------|----------------|
| Pump                   | Access or Improved Road  | Trail              | Closure    | Mobile Weather Unit | Division Break |
| Water Tank             | Completed Burnout        | County             | Culvert    | Repeater            |                |
| Completed Line         | Planned Fire Line        | Forest Boundary    | Drop Point | Staging Area        |                |
| Completed Hand Line    | Ridge/Geographic Feature | Wilderness         | Gate       | Value at Risk       |                |
| Road as Completed Line | Cities                   | Transmission Lines | Helispot   |                     |                |
| Towns                  | Waterbody                | Stream             |            |                     |                |
| State Highway          | Camp                     |                    |            |                     |                |
| Road                   |                          |                    |            |                     |                |

Approx 123,590 acres (IR)  
6/27/19 2137 hrs

0 0.5 1  
Miles

SOUTHWEST AREA  
INCIDENT MANAGEMENT TEAM

NAD 1983 UTM Zone 12N  
Prepared by: Admin  
6/28/2019 1850 hrs