

**Incident Action Plan**  
Page: 1

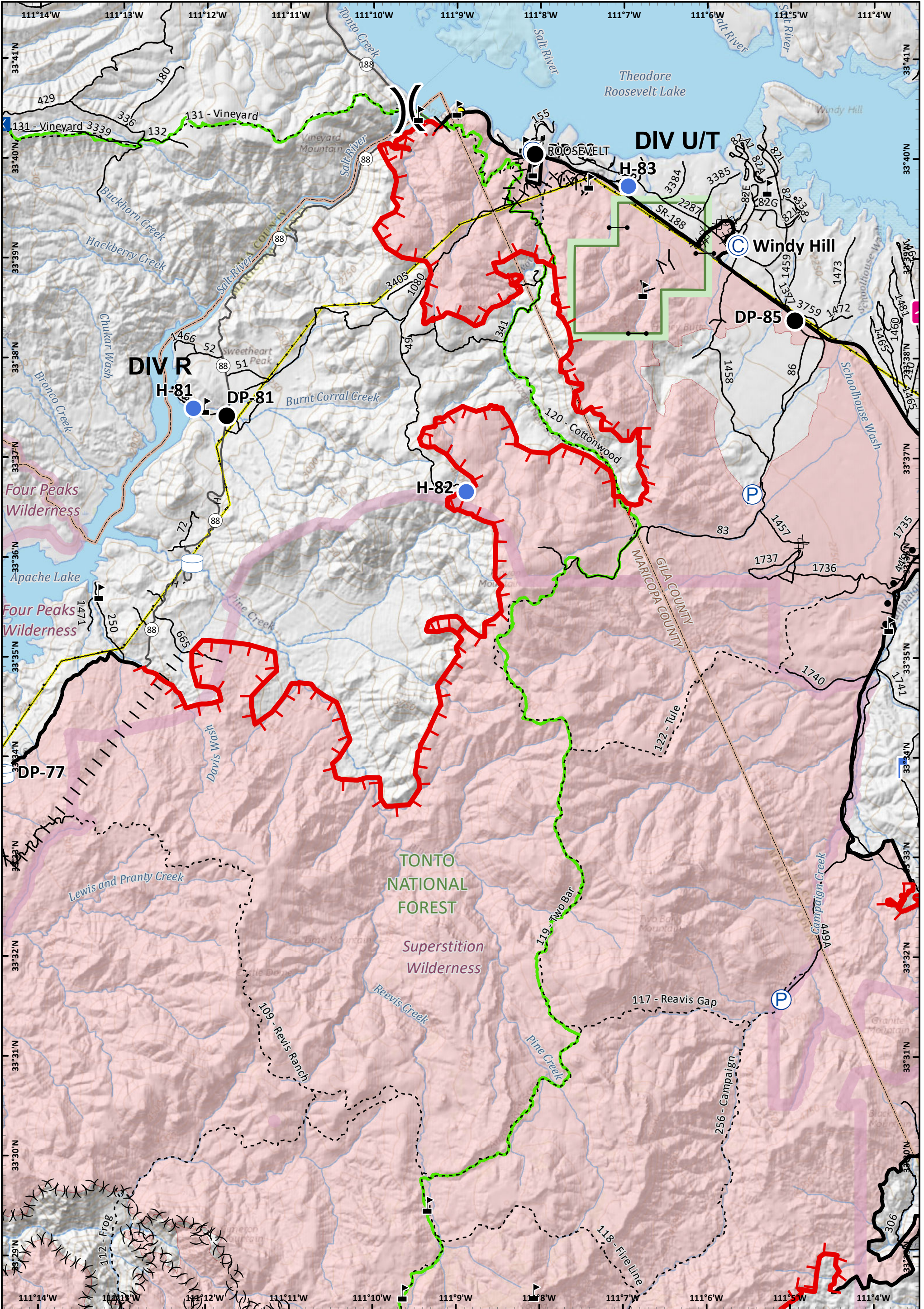
**Woodbury Fire**  
AZ-TNF-000579  
6/30/2019 Day

- |                      |                          |                               |            |                         |                |
|----------------------|--------------------------|-------------------------------|------------|-------------------------|----------------|
| Pump                 | Proposed Burnout         | Arizona National Scenic Trail | Camp       | Unimproved Landing Area | Value at Risk  |
| Water Tank           | Completed Burnout        | County                        | Closure    | Helispot                | Division Break |
| Completed Line       | Ridge/Geographic Feature | Forest Boundary               | Culvert    | Mobile Weather Unit     |                |
| Completed Dozer Line | Cities                   | Wilderness                    | Drop Point | Repeater                |                |
| Completed Hand Line  | Towns                    | Transmission Lines            |            |                         |                |
|                      | State Highway            | Waterbody                     |            |                         |                |
|                      | Road                     | Stream                        |            |                         |                |

Approx 123,827 acres (IR)  
6/29/19 0057 hrs

0 0.5 1  
Miles

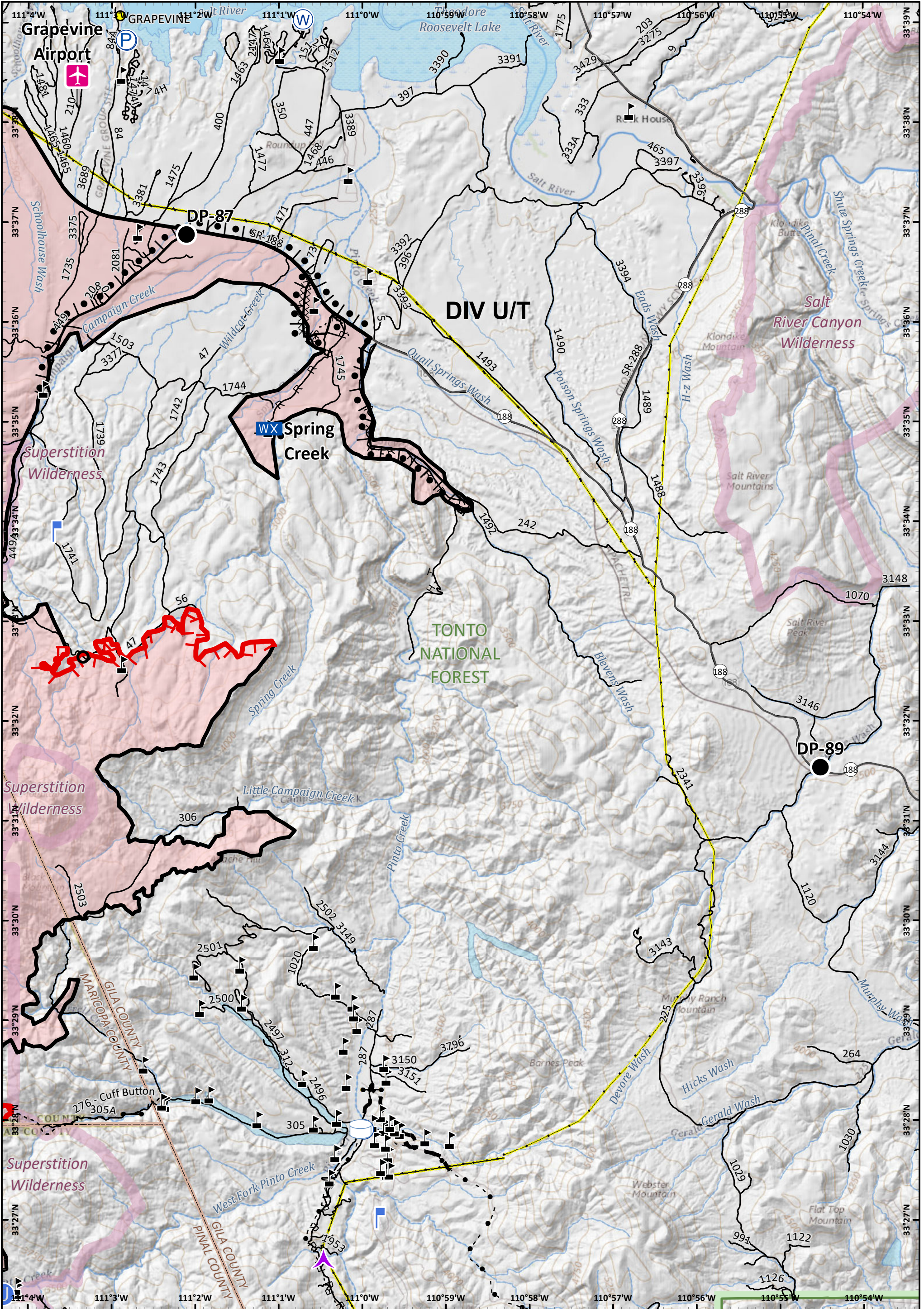
NAD 1983 UTM Zone 12N  
Prepared by: Admin  
6/29/2019 1543 hrs



**Incident Action Plan**  
**Page: 2**

**Woodbury Fire**  
 AZ-TNF-000579  
 6/30/2019 Day

Pump	Completed Dozer Line	Towns	Waterbody	Drop Point	Mobile Weather Unit	Division Break
Other Property	Completed Hand Line	State Highway	Stream	Gate	Road Repair	Southwest Area Incident Management Team
Water Tank	Proposed Burnout	Road	Airstrip or Airport	Helispot	Water Source	North arrow
Uncontrolled Fire Edge	Completed Burnout	Trail	Ridge/Geographic Feature	Lookout	Value at Risk	<b>Approx 123,827 acres (IR)</b> 6/29/19 0057 hrs
Completed Line	Ridge/Geographic Feature	Arizona National Scenic Trail	County	Closure	0 0.5 1 Miles	<small>NAD 1983 UTM Zone 12N Prepared by: Admin 6/29/2019 1543 hrs</small>
Ridge/Geographic Feature	Forest Boundary	Wilderness	Transmission Lines			



**Incident Action Plan**  
 Page: 3

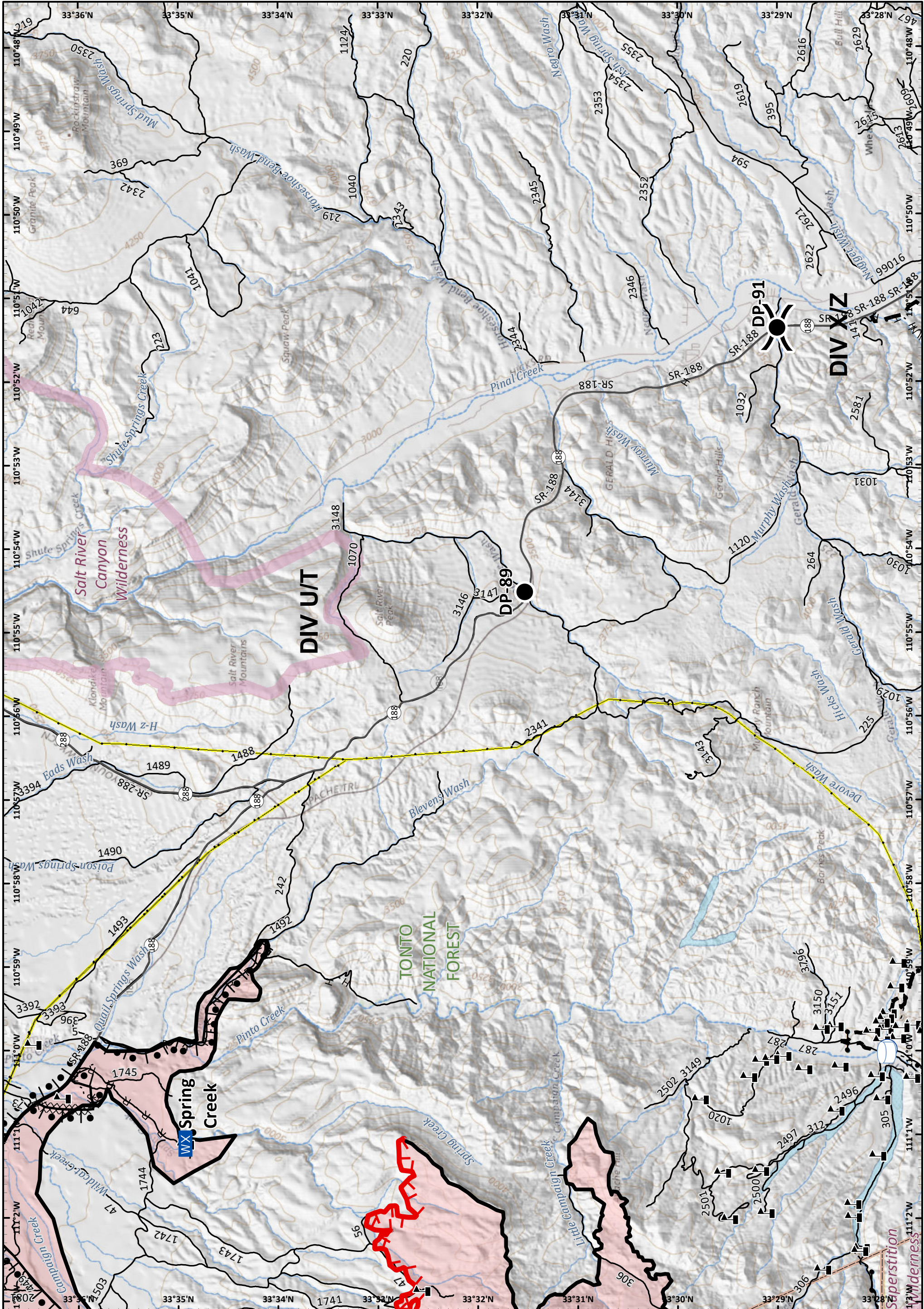
**Woodbury Fire**  
 AZ-TNF-000579  
 6/30/2019 Day

Pump	H - Completed Hand Line	State Highway	Aerial Hazard	Gate	Water Source
Water Tank	R - Road as Completed Line	Road	Airstrip or Airport	Unimproved Landing Area	Value at Risk
Uncontrolled Fire Edge	Completed Burnout	Trail	Culvert	Lookout	Mobile Weather Unit
Completed Line	Planned Fire Line	County	Drop Point		
Completed Dozer Line	Highlighted Manmade Feature	Forest Boundary			
	Cities	Wilderness			
		Transmission Lines			
		Waterbody			
		Stream			

Approx 123,827 acres (IR)  
 6/29/19 0057 hrs

0 0.5 1  
 Miles


NAD 1983 UTM Zone 12N  
 Prepared by: Admin  
 6/29/2019 1543 hrs





**Incident Action Plan**

**Woodbury Fire**  
 AZ-TNF-000579  
 6/30/2019 Day

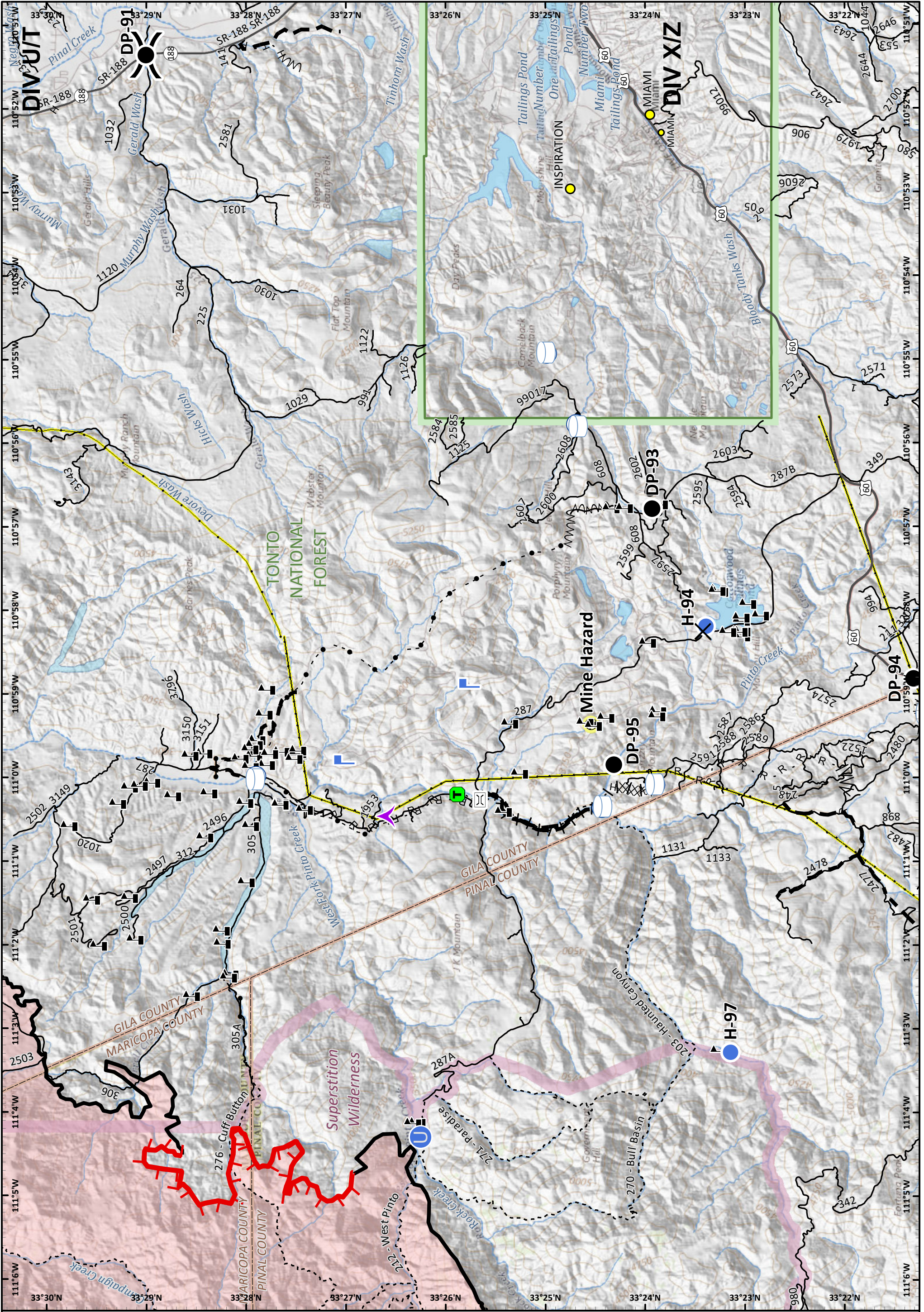
- |                             |                                  |                    |                     |                |
|-----------------------------|----------------------------------|--------------------|---------------------|----------------|
| Pump                        | H - Completed Hand Line          | State Highway      | Drop Point          | Division Break |
| Water Tank                  | R - Road as Completed Line       | Road               | Gate                |                |
| Uncontrolled Fire Edge      | Completed Burnout                | Trail              | Mobile Weather Unit |                |
| Completed Line              | Fire Break Planned or Incomplete | County             | Value at Risk       |                |
| Completed Dozer Line        | Planned Fire Line                | Forest Boundary    |                     |                |
| Highlighted Manmade Feature | Highlighted Manmade Feature      | Wilderness         |                     |                |
|                             |                                  | Transmission Lines |                     |                |
|                             |                                  | Waterbody          |                     |                |
|                             |                                  | Stream             |                     |                |



Approx 123,827 acres (IR)  
 6/29/19 0057 hrs

NAD 1983 UTM Zone 12N  
 Prepared by: Admin  
 6/29/2019 1543 hrs



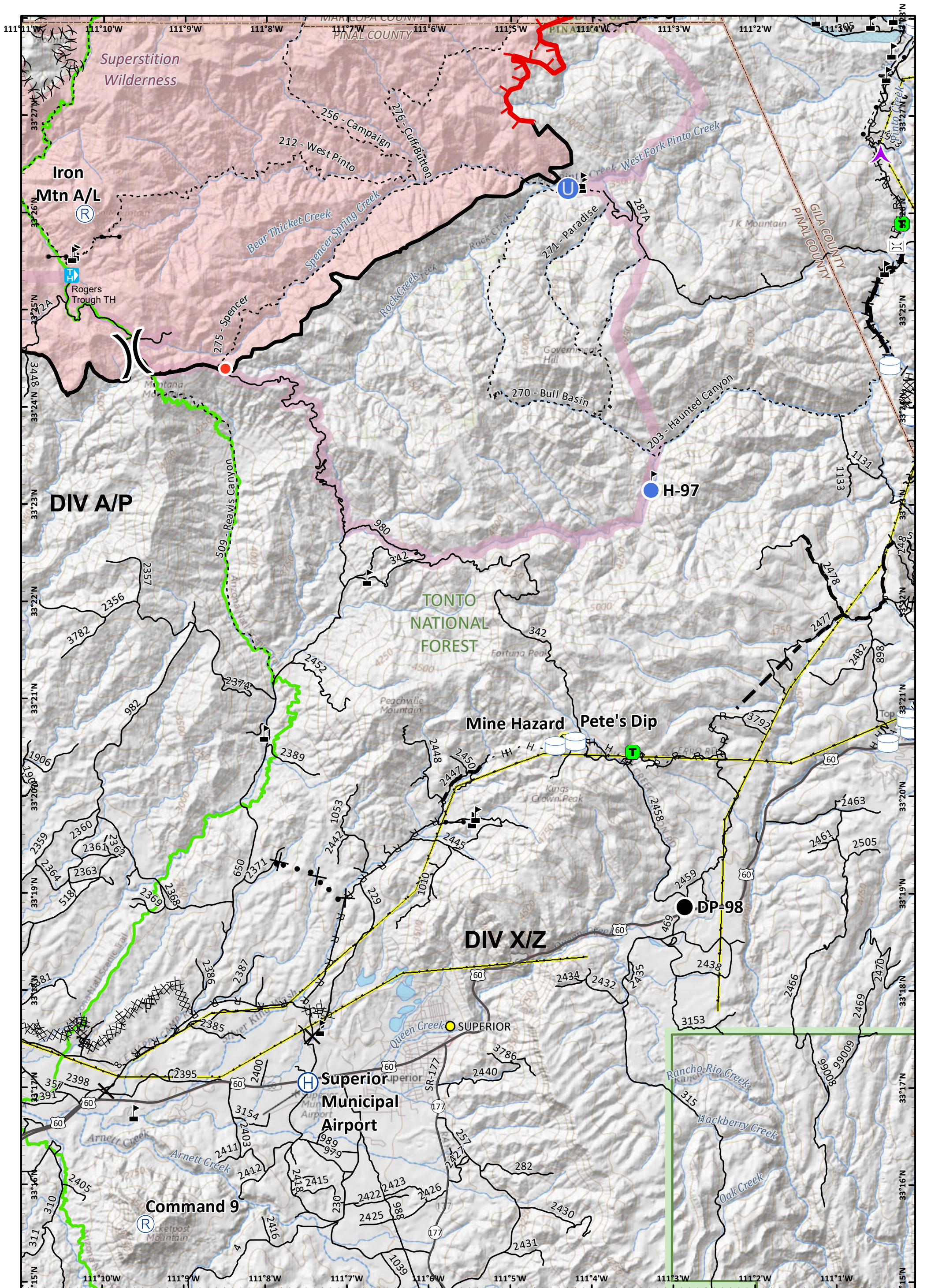
**Incident Action Plan**  
**Page: 5**  
**Woodbury Fire**  
 AZ-TNF-000579  
 6/30/2019 Day

Pump	H - Completed Hand Line	Highlighted Manmade Feature	Wilderness	Clean Up Area	Unimproved Landing Area	Division Break
Water Tank	R - Road as Completed Line	Cities	Transmission Lines	Closure	Helispot	
Uncontrolled Fire Edge	Line Break Completed	Towns	Waterbody	Drop Point	Lookout	
Completed Line	Proposed Burnout	U.S. Highway	Stream	Gate	Value at Risk	
Completed Dozer Line	Fire Break Planned or Incomplete	Road	Aerial Hazard	Hazard		
Planned Fire Line	Trail	County	Bridge			
	Forest Boundary					

Approx 123,827 acres (IR)  
 6/29/19 0057 hrs

0 0.5 1  
 Miles

NAD 1983 UTM Zone 12N  
 Prepared by: Admin  
 6/29/2019 1543 hrs



**Incident Action Plan**  
 Page: 6  
**Woodbury Fire**  
 AZ-TNF-000579  
 6/30/2019 Day

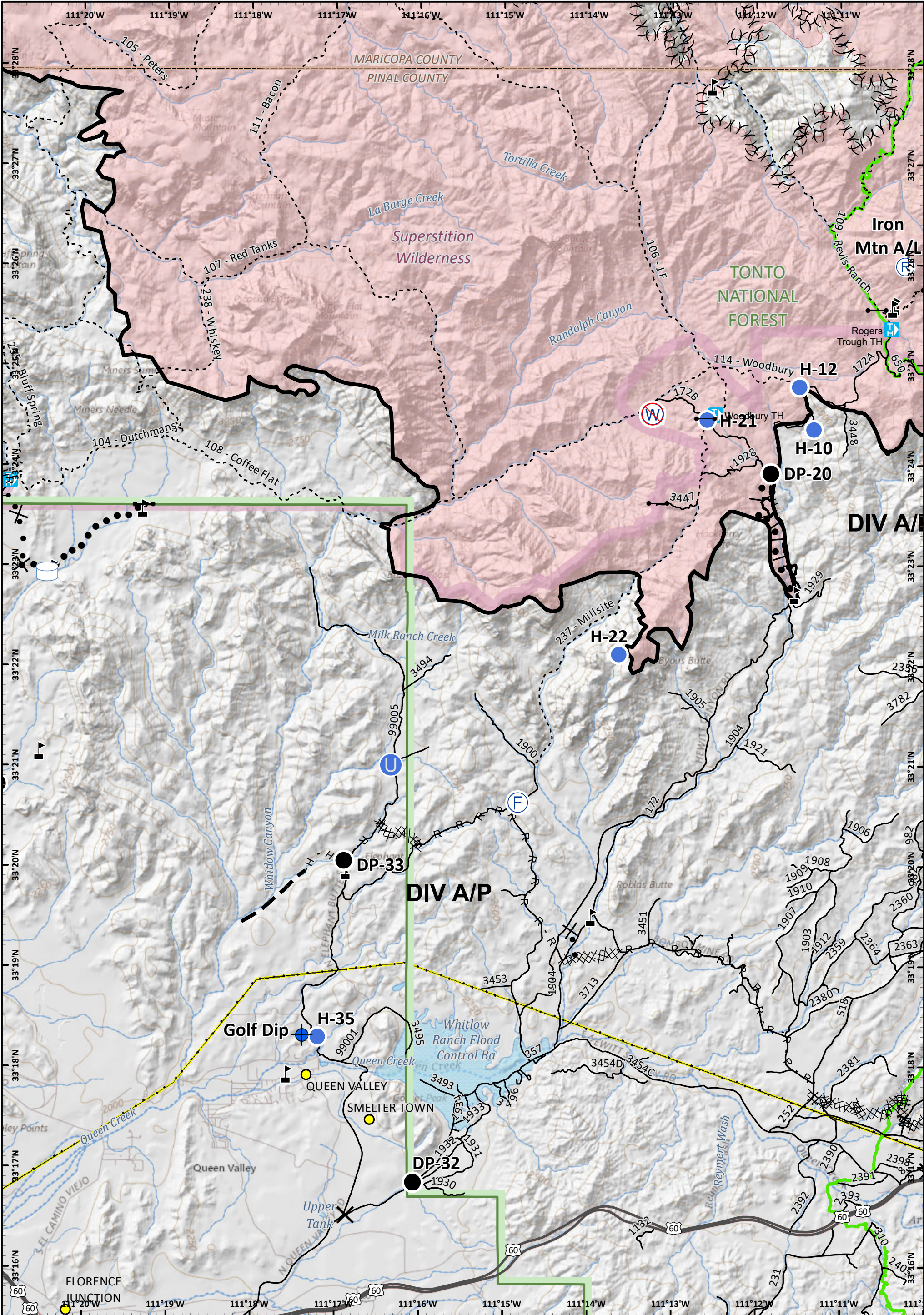
- |                        |                            |                                  |                               |
|------------------------|----------------------------|----------------------------------|-------------------------------|
| Pump                   | H - Completed Hand Line    | Fire Break Planned or Incomplete | U.S. Highway                  |
| Water Tank             | R - Road as Completed Line | Planned Fire Line                | State Highway                 |
| Uncontrolled Fire Edge | Access or Improved Road    | Highlighted Manmade Feature      | Road                          |
| Completed Line         | Line Break Completed       | Ridge/Geographic Feature         | Trail                         |
| Completed Dozer Line   | Proposed Burnout           | Cities                           | Arizona National Scenic Trail |
| Proposed Dozer Line    | Trailhead                  | County                           | Forest Boundary               |
|                        |                            | Wilderness                       | Transmission Lines            |

SOUTHWEST AREA INCIDENT MANAGEMENT TEAM

Approx 123,827 acres (IR)  
 6/29/19 0057 hrs

0 0.5 1  
 Miles

NAD 1983 UTM Zone 12N  
 Prepared by: Admin  
 6/29/2019 1543 hrs



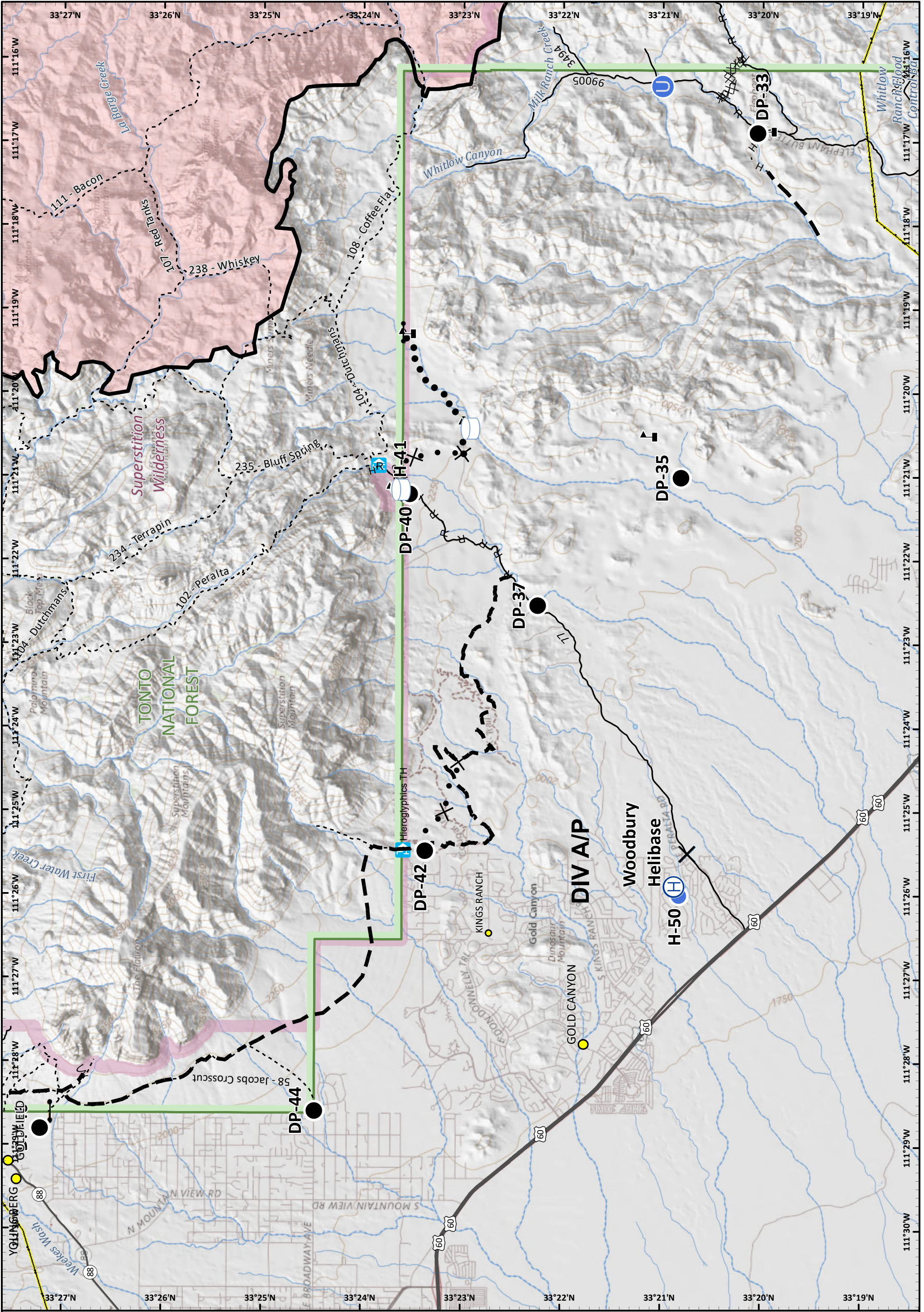
**Incident Action Plan**  
**Page: 7**

**Woodbury Fire**  
 AZ-TNF-000579  
 6/30/2019 Day

Water Tank	Completed Burnout	Trailhead	Waterbody	Fire Station	Repeater
Completed Line	Proposed Dozer Line	U.S. Highway	Stream	Closure	Restricted Water Source
Completed Dozer Line	Planned Fire Line	Road	Closure	Gate	Unimproved Landing Area
H - Completed Hand Line	Planned Secondary Line	Trail	Arizona National Scenic Trail	Dip Site	Value at Risk
R - Road as Completed Line	Ridge/Geographic Feature	County	Forest Boundary	Drop Point	Helispot
Cities	Wilderness	Transmission Lines			

Approx 123,827 acres (IR)  
 6/29/19 0057 hrs  
 0 0.5 1  
 Miles

NAD 1983 UTM Zone 12N  
 Prepared by: Admin  
 6/29/2019 1543 hrs



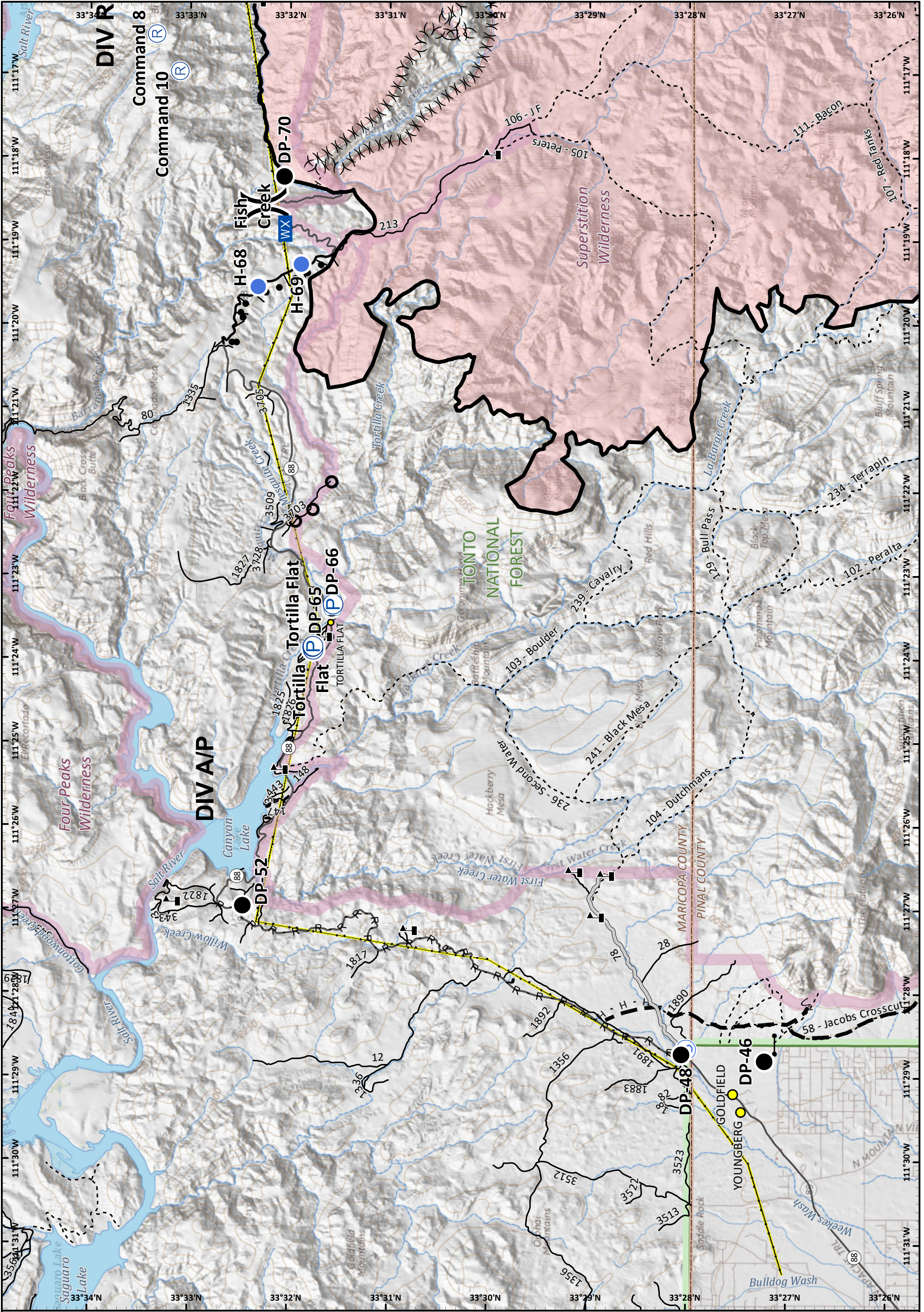
- |  |                        |  |                                  |  |                    |  |          |  |                         |
|--|------------------------|--|----------------------------------|--|--------------------|--|----------|--|-------------------------|
|  | Water Tank             |  | Proposed Dozer Line              |  | U.S. Highway       |  | Stream   |  | Helibase                |
|  | Completed Line         |  | Fire Break Planned or Incomplete |  | State Highway      |  | Closure  |  | Unimproved Landing Area |
|  | Completed Dozer Line   |  | Planned Fire Line                |  | Road               |  | Dip Site |  | Drop Point              |
|  | Completed Hand Line    |  | Planned Secondary Line           |  | Trail              |  | Helispot |  | Value at Risk           |
|  | Road as Completed Line |  | Cities                           |  | County             |  | Gate     |  |                         |
|  | Trailhead              |  | Towns                            |  | Forest Boundary    |  |          |  |                         |
|  |                        |  | Wilderness                       |  | Transmission Lines |  |          |  |                         |
|  |                        |  | Waterbody                        |  |                    |  |          |  |                         |

Approx 123,827 acres (IR)  
6/29/19 0057 hrs

0 0.5 1  
Miles

NAD 1983 UTM Zone 12N  
Prepared by: Admin  
6/29/2019 1543 hrs





**Incident Action Plan**  
 Page: 9

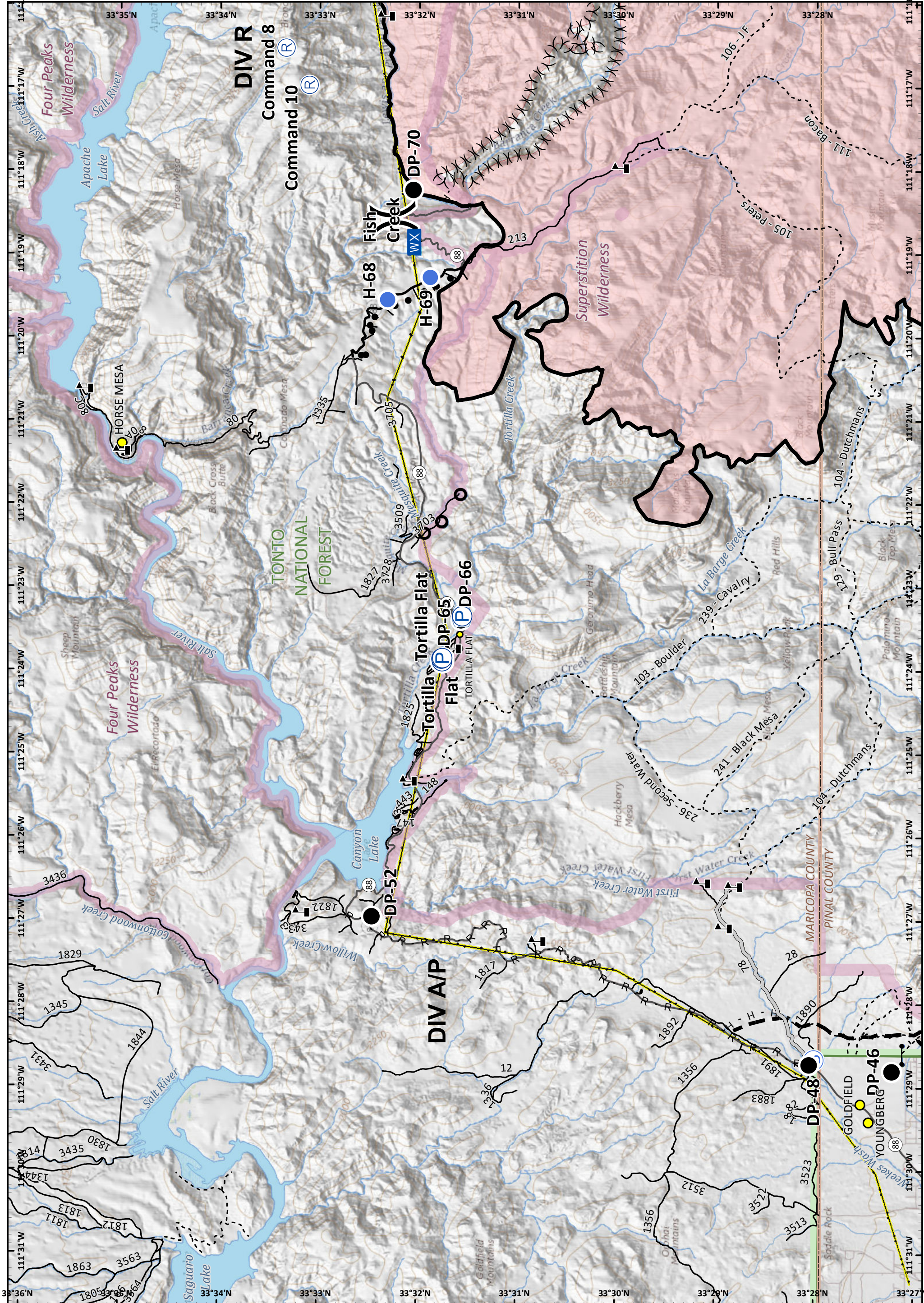
**Woodbury Fire**  
 AZ-TNF-000579  
 6/30/2019 Day

Pump	Access or Improved Road	State Highway	Camp	Gate	Staging Area
Water Tank	Completed Burnout	Road	Closure	Helispot	Value at Risk
Completed Line	Fire Break Planned or Incomplete	Trail	Culvert	Mobile Weather Unit	Division Break
H - Completed Hand Line	Planned Fire Line	County	Drop Point	Repeater	
R - Road as Completed Line	( ) Ridge/Geographic Feature	Forest Boundary			
Cities	Wilderness	Transmission Lines			
Towns	Waterbody	Stream			

Approx 123,827 acres (IR)  
 6/29/19 0057 hrs

0 0.5 1  
 Miles

NAD 1983 UTM Zone 12N  
 Prepared by: Admin  
 6/29/2019 1543 hrs



**Incident Action Plan**  
**Page: 10**  
**Woodbury Fire**  
 AZ-TNF-000579  
 6/30/2019 Day

- |                            |                          |                 |            |                     |                |
|----------------------------|--------------------------|-----------------|------------|---------------------|----------------|
| Pump                       | Access or Improved Road  | Trail           | Closure    | Mobile Weather Unit | Division Break |
| Water Tank                 | Completed Burnout        | County          | Culvert    | Repeater            |                |
| Completed Line             | Planned Fire Line        | Forest Boundary | Drop Point | Staging Area        |                |
| H - Completed Hand Line    | Ridge/Geographic Feature | Wilderness      | Gate       | Value at Risk       |                |
| R - Road as Completed Line | Transmission Lines       | Waterbody       | Helispot   |                     |                |
|                            | Stream                   | Camp            |            |                     |                |
|                            | State Highway            |                 |            |                     |                |
|                            | Road                     |                 |            |                     |                |

Approx 123,827 acres (IR)  
 6/29/19 0057 hrs

0 0.5 1  
 Miles

NAD 1983 UTM Zone 12N  
 Prepared by: Admin  
 6/29/2019 1543 hrs