



**Incident Action Plan**  
Page: 1

**Woodbury Fire**  
AZ-TNF-000579  
7/02/2019 Day

- |                      |                          |                               |            |                         |                |
|----------------------|--------------------------|-------------------------------|------------|-------------------------|----------------|
| Pump                 | Proposed Burnout         | Arizona National Scenic Trail | Camp       | Unimproved Landing Area | Value at Risk  |
| Water Tank           | Completed Burnout        | County                        | Closure    | Helispot                | Division Break |
| Completed Line       | Ridge/Geographic Feature | Forest Boundary               | Culvert    | Mobile Weather Unit     | QR Code        |
| Completed Dozer Line | Cities                   | Wilderness                    | Drop Point | Repeater                |                |
| Completed Hand Line  | Towns                    | Transmission Lines            |            |                         |                |
| Completed Hand Line  | State Highway            | Waterbody                     |            |                         |                |
| Completed Hand Line  | Road                     | Stream                        |            |                         |                |

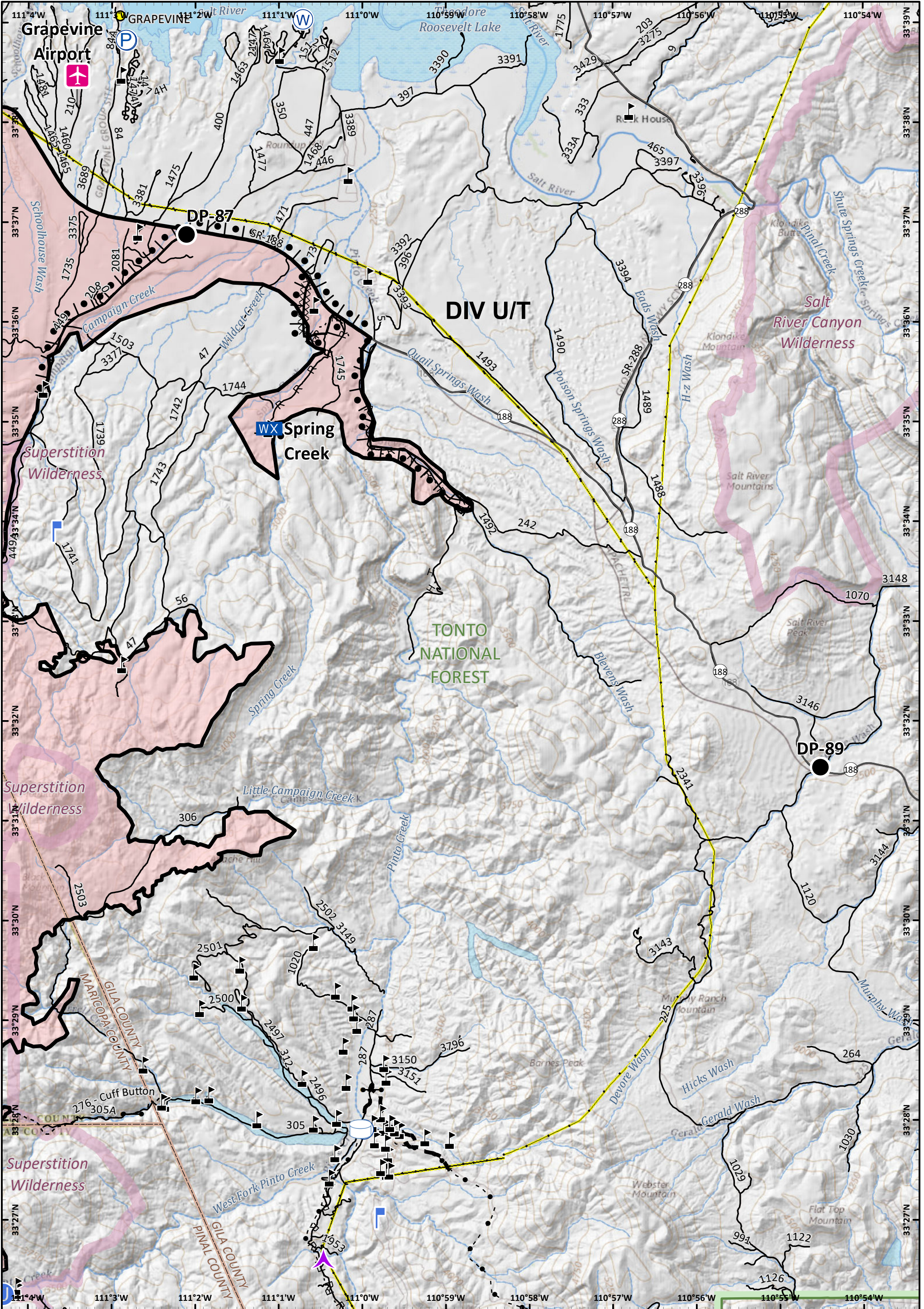



Approx 123,875 acres (IR)  
6/29/19 2049 hrs

0 0.5 1  
Miles

NAD 1983 UTM Zone 12N  
Prepared by: Admin  
7/1/2019 1910 hrs





**Incident Action Plan**  
 Page: 3

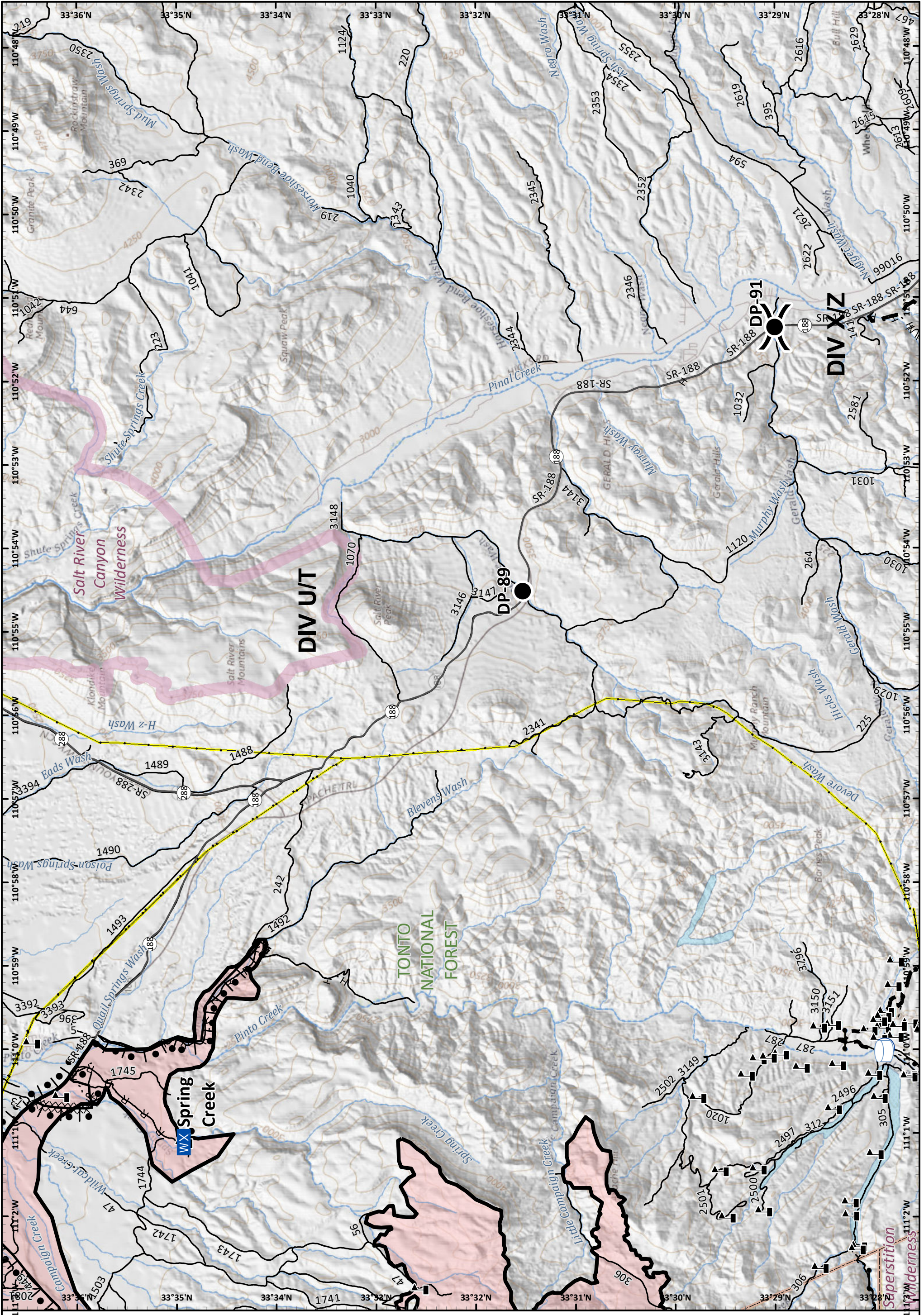
**Woodbury Fire**  
 AZ-TNF-000579  
 7/02/2019 Day

Pump	R - Road as Completed Line	Trail	Airstrip or Airport	U Unimproved Landing Area	W Water Source
Water Tank	Completed Burnout	County	Culvert	Lookout	Value at Risk
Completed Line	Planned Fire Line	Forest Boundary	Drop Point	WX Mobile Weather Unit	
Completed Dozer Line	Highlighted Manmade Feature	Wilderness	Gate		
H - Completed Hand Line	Cities	Transmission Lines			
	State Highway	Waterbody			
	Road	Stream			
		Aerial Hazard			

Approx 123,875 acres (IR)  
 6/29/19 2049 hrs

0 0.5 1  
 Miles

NAD 1983 UTM Zone 12N  
 Prepared by: Admin  
 7/1/2019 1910 hrs



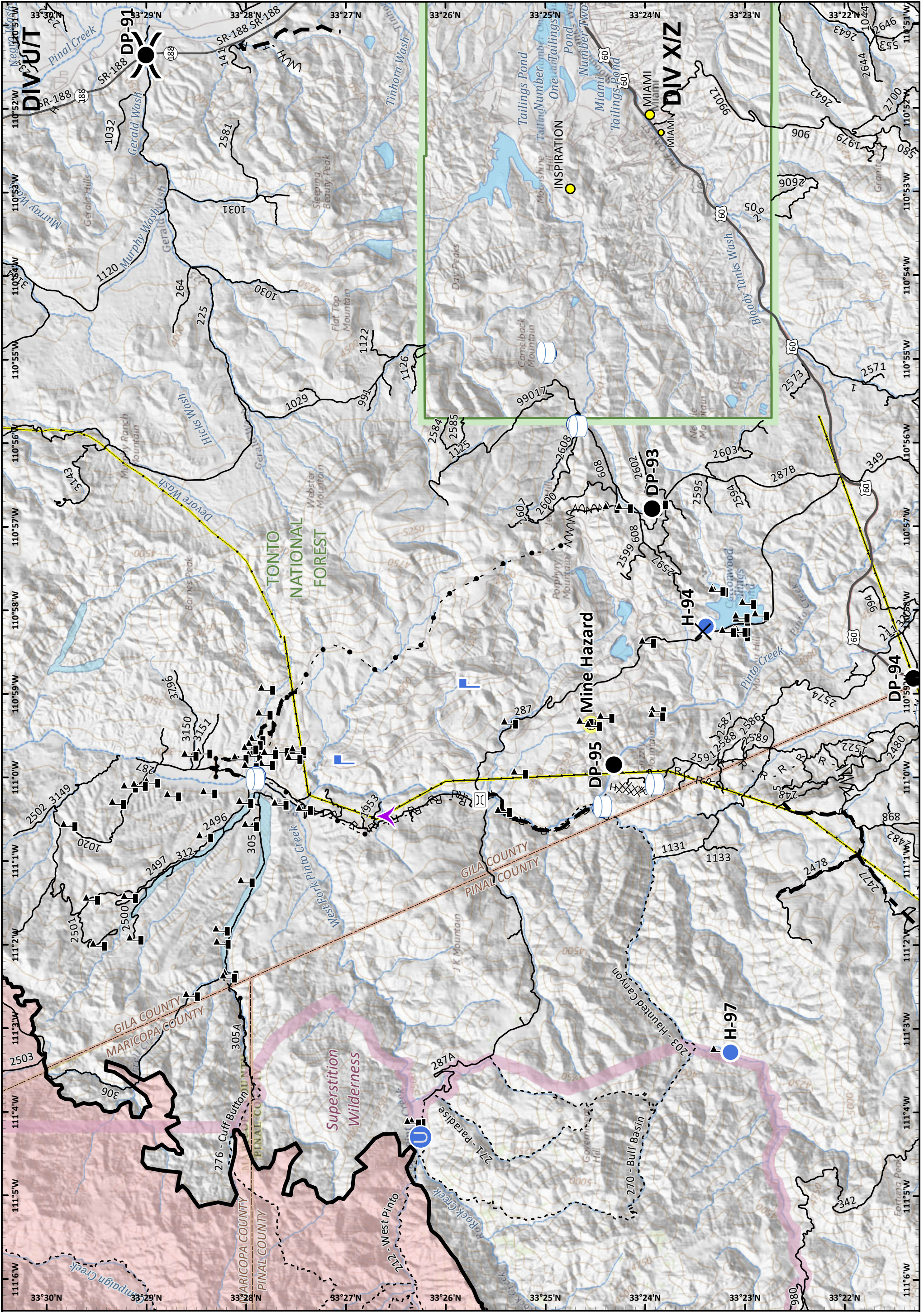
**Incident Action Plan**  
 Page: 4  
**Woodbury Fire**  
 AZ-TNF-000579  
 7/02/2019 Day

- |                             |                                  |                    |                     |                |
|-----------------------------|----------------------------------|--------------------|---------------------|----------------|
| Pump                        | R - Road as Completed Line       | Road               | Drop Point          | Division Break |
| Water Tank                  | Completed Burnout                | Trail              | Gate                |                |
| Completed Line              | Fire Break Planned or Incomplete | County             | Mobile Weather Unit |                |
| Completed Dozer Line        | Planned Fire Line                | Forest Boundary    | Value at Risk       |                |
| Highlighted Manmade Feature | Completed Hand Line              | Wilderness         |                     |                |
| State Highway               |                                  | Transmission Lines |                     |                |
|                             |                                  | Waterbody          |                     |                |
|                             |                                  | Stream             |                     |                |

APPROX 123,875 acres (IR)  
 6/29/19 2049 hrs

0 0.5 1 Miles

NAD 1983 UTM Zone 12N  
 Prepared by: Admin  
 7/1/2019 1910 hrs



**Incident Action Plan**  
Page: 5

**Woodbury Fire**  
AZ-TNF-000579  
7/02/2019 Day

- Pump
- Water Tank
- Completed Line
- Completed Dozer Line
- Completed Hand Line

- R - Road as Completed Line
- Line Break Completed
- Fire Break Planned or Incomplete
- Planned Fire Line
- Highlighted Manmade Feature
- Cities

- Towns
- U.S. Highway
- State Highway
- Road
- Trail
- County
- Forest Boundary
- Wilderness
- Transmission Lines

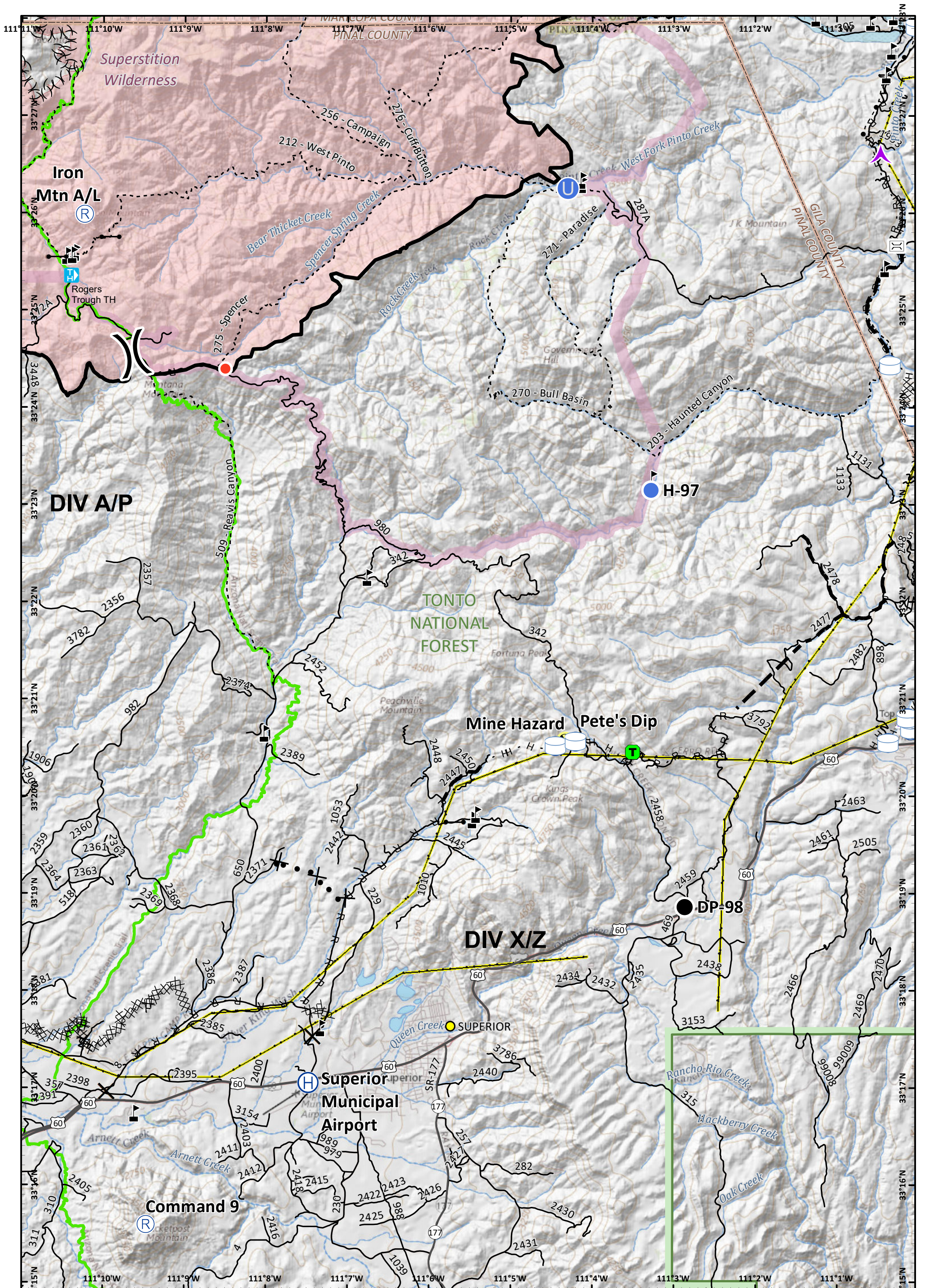
- Waterbody
- Stream
- Aerial Hazard
- Bridge
- Closure

- Drop Point
- Gate
- Hazard
- Unimproved Landing Area

- Helispot
- Lookout
- Viewpoint
- 



Approx 123,875 acres (IR)  
6/29/19 2049 hrs  
0 0.5 1 Miles  
NAD 1983 UTM Zone 12N  
Prepared by: Admin  
7/1/2019 1910 hrs

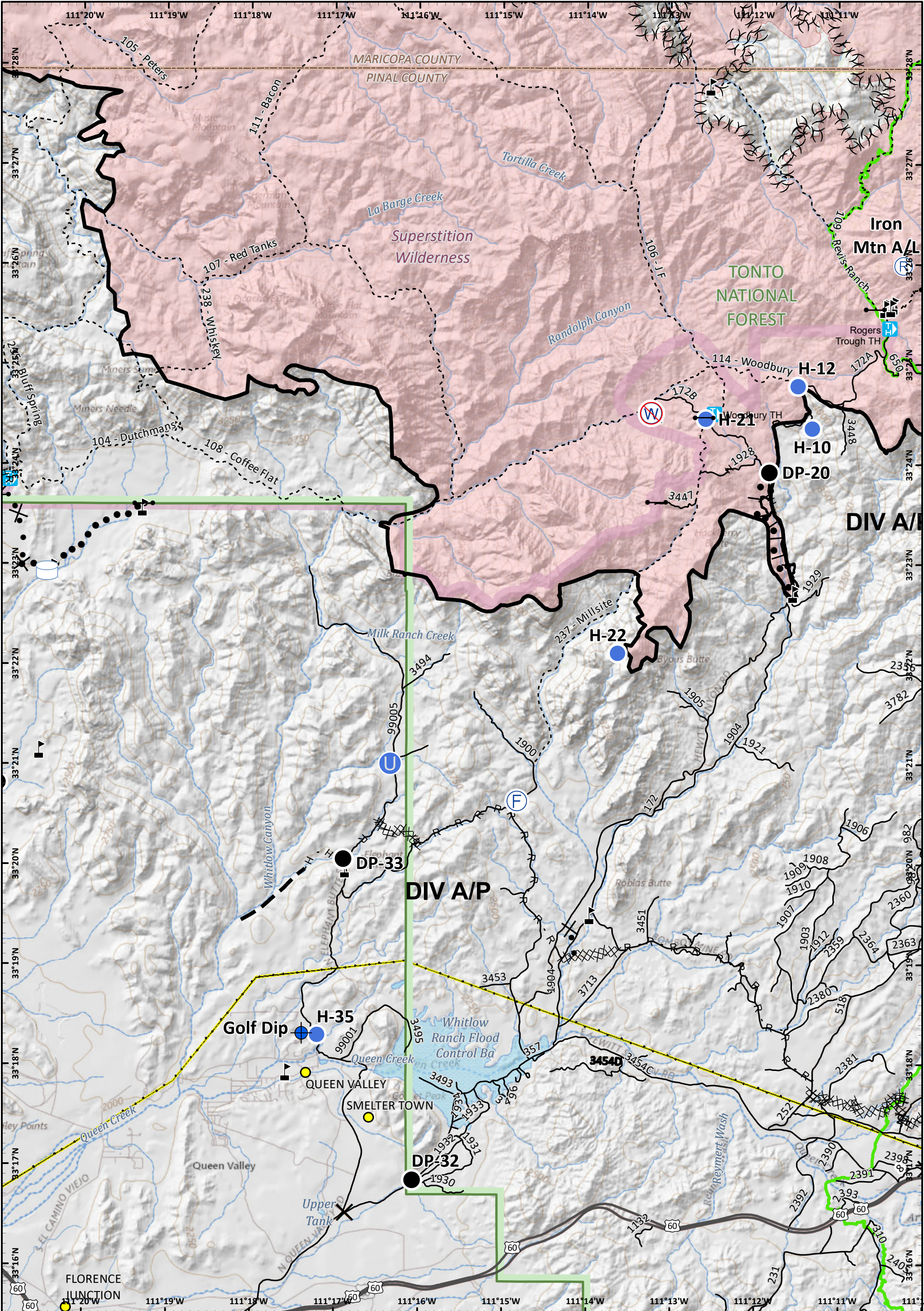


**Incident Action Plan**  
**Page: 6**  
**Woodbury Fire**  
 AZ-TNF-000579  
 7/02/2019 Day

- |                         |                                  |                              |                               |
|-------------------------|----------------------------------|------------------------------|-------------------------------|
| Pump                    | R - Road as Completed Line       | Highlighted Manmade Feature  | Trail                         |
| Water Tank              | Access or Improved Road          | (X) Ridge/Geographic Feature | Arizona National Scenic Trail |
| Completed Line          | Line Break Completed             | Cities                       | County                        |
| Completed Dozer Line    | Proposed Dozer Line              | Trailhead                    | Forest Boundary               |
| H - Completed Hand Line | Fire Break Planned or Incomplete | U.S. Highway                 | Wilderness                    |
| Planned Fire Line       | Road                             | State Highway                | Transmission Lines            |

Approx 123,875 acres (IR)  
6/29/19 2049 hrs

NAD 1983 UTM Zone 12N  
 Prepared by: Admin  
 7/1/2019 1910 hrs



**Incident Action Plan**  
 Page: 7

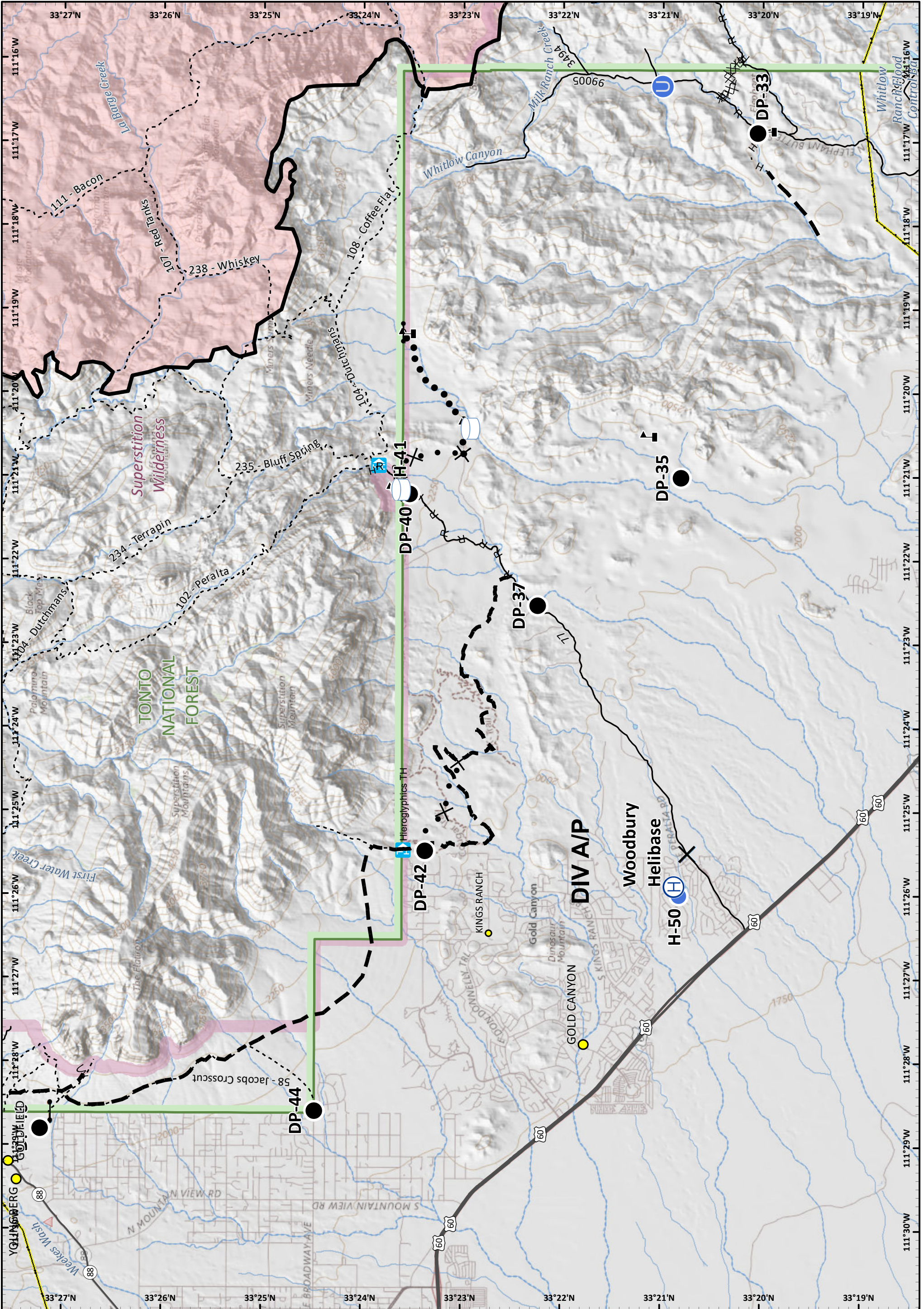
**Woodbury Fire**  
 AZ-TNF-000579  
 7/02/2019 Day

Water Tank	Completed Burnout	Trailhead	Waterbody	Fire Station	Repeater
Completed Line	Proposed Dozer Line	U.S. Highway	Stream	Closure	Restricted Water Source
Completed Dozer Line	Planned Fire Line	Road	X	Gate	Unimproved Landing Area
H - Completed Hand Line	Planned Secondary Line	Arizona National Scenic Trail	Ridge/Geographic Feature	Dip Site	Helispot
R - Road as Completed Line	Cities	County	Forest Boundary	Drop Point	QR Code
	Wilderness	Transmission Lines			

CENTRAL WEST ZONE  
 Approx 123,875 acres (IR)  
 6/29/19 2049 hrs

0 0.5 1  
 Miles

NAD 1983 UTM Zone 12N  
 Prepared by: Admin  
 7/1/2019 1910 hrs



- |                            |                                  |                    |          |                         |
|----------------------------|----------------------------------|--------------------|----------|-------------------------|
| Water Tank                 | Proposed Dozer Line              | U.S. Highway       | Stream   | Helibase                |
| Completed Line             | Fire Break Planned or Incomplete | State Highway      | Closure  | Unimproved Landing Area |
| Completed Dozer Line       | Planned Fire Line                | Road               | Dip Site | Drop Point              |
| H - Completed Hand Line    | Planned Secondary Line           | Trail              | Helispot | Value at Risk           |
| R - Road as Completed Line | Cities                           | County             | Gate     |                         |
| Trailhead                  | Towns                            | Forest Boundary    |          |                         |
|                            | Wilderness                       | Transmission Lines |          |                         |
|                            | Waterbody                        | Waterbody          |          |                         |



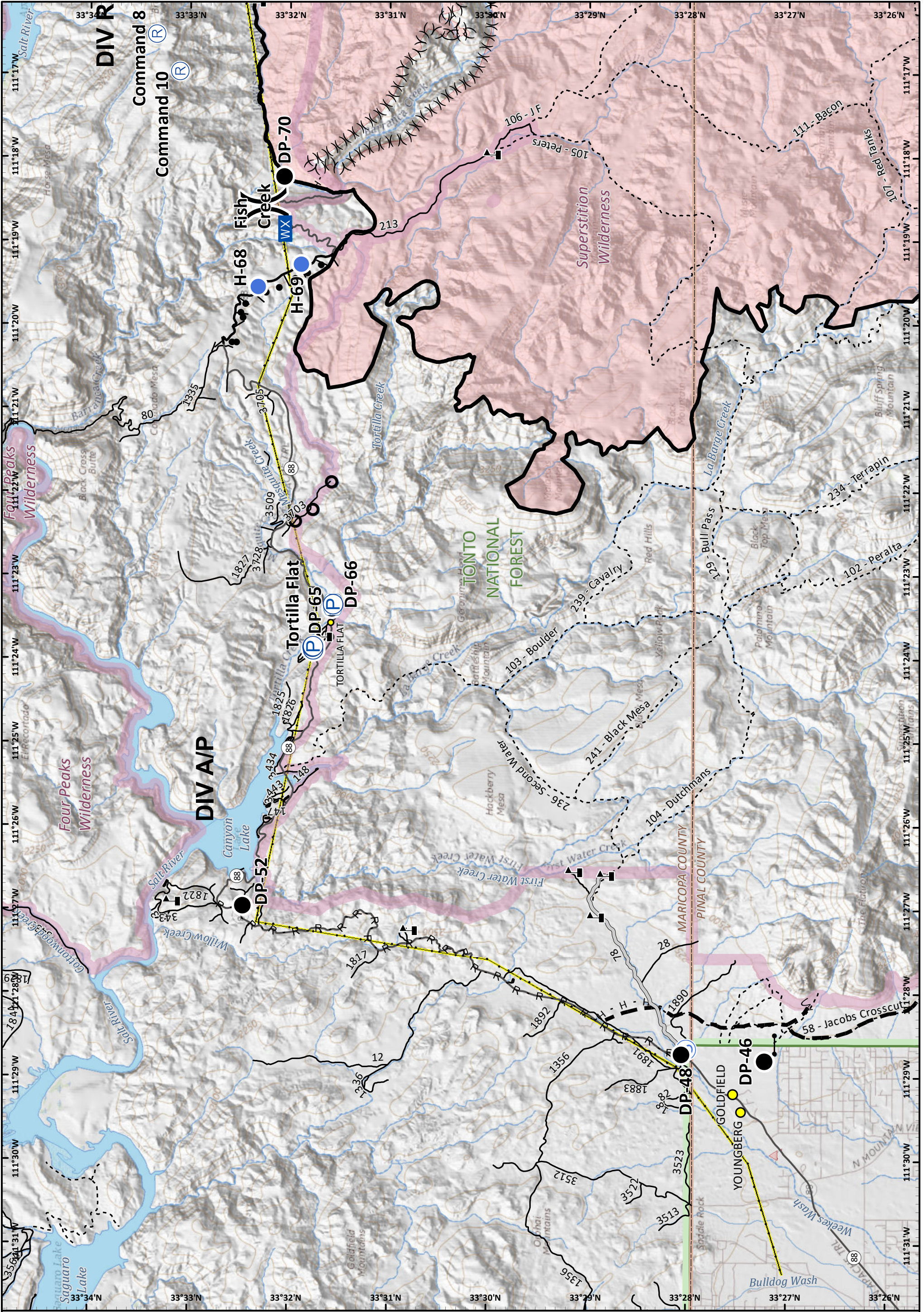
**CENTRAL WEST ZONE**  
*Fire Wise Team*

Approx 123,875 acres (IR)  
6/29/19 2049 hrs

0 0.5 1  
Miles

NAD 1983 UTM Zone 12N  
Prepared by: Admin  
7/1/2019 1910 hrs





**Incident Action Plan**  
 Page: 9  
**Woodbury Fire**  
 AZ-TNF-000579  
 7/02/2019 Day

- |                            |                                  |                    |            |                     |               |
|----------------------------|----------------------------------|--------------------|------------|---------------------|---------------|
| Pump                       | Access or Improved Road          | State Highway      | Camp       | Gate                | Staging Area  |
| Water Tank                 | Completed Burnout                | Road               | Closure    | Helispot            | Value at Risk |
| Completed Line             | Fire Break Planned or Incomplete | Trail              | Culvert    | Mobile Weather Unit | Division      |
| H - Completed Hand Line    | Planned Fire Line                | County             | Drop Point | Repeater            |               |
| R - Road as Completed Line | ( ) Ridge/Geographic Feature     | Forest Boundary    |            |                     |               |
| Cities                     | Wilderness                       | Transmission Lines |            |                     |               |
| Towns                      | Waterbody                        | Stream             |            |                     |               |

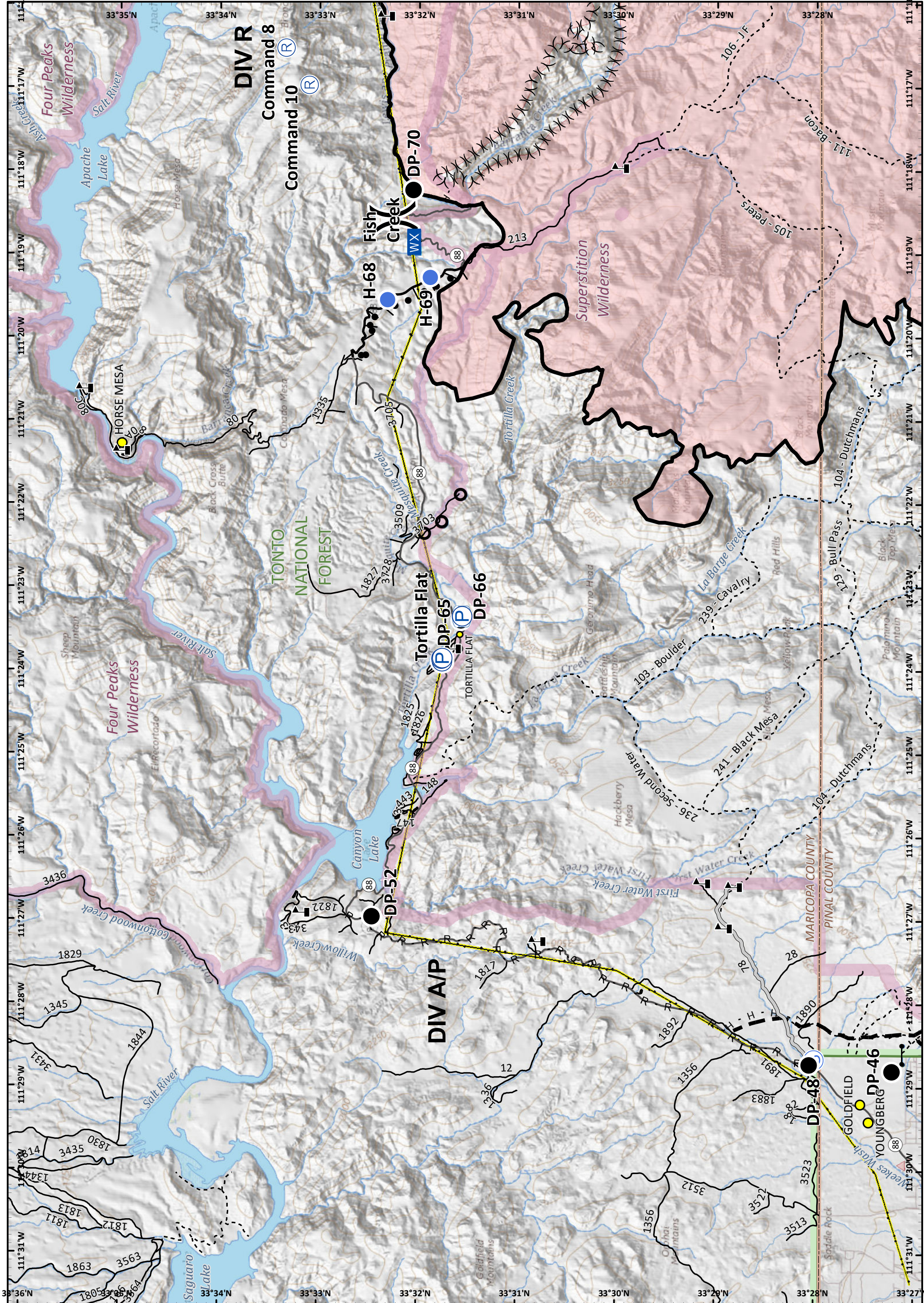
**CENTRAL WEST ZONE**  
Type Three Team

Approx 123,875 acres (IR)  
6/29/19 2049 hrs

0 0.5 1

Miles

NAD 1983 UTM Zone 12N  
Prepared by: Admin  
7/1/2019 1910 hrs



**Incident Action Plan**  
**Page: 10**  
**Woodbury Fire**  
 AZ-TNF-000579  
 7/02/2019 Day

- |                            |                          |                 |            |                     |                |
|----------------------------|--------------------------|-----------------|------------|---------------------|----------------|
| Pump                       | Access or Improved Road  | Trail           | Closure    | Mobile Weather Unit | Division Break |
| Water Tank                 | Completed Burnout        | County          | Culvert    | Repeater            |                |
| Completed Line             | Planned Fire Line        | Forest Boundary | Drop Point | Staging Area        |                |
| H - Completed Hand Line    | Ridge/Geographic Feature | Wilderness      | Gate       | Value at Risk       |                |
| R - Road as Completed Line | Transmission Lines       | Waterbody       | Helispot   |                     |                |
|                            | Stream                   | Camp            |            |                     |                |
|                            | State Highway            |                 |            |                     |                |
|                            | Road                     |                 |            |                     |                |

APPROX 123,875 acres (IR)  
6/29/19 2049 hrs

0 0.5 1  
Miles

NAD 1983 UTM Zone 12N  
Prepared by: Admin  
7/1/2019 1910 hrs