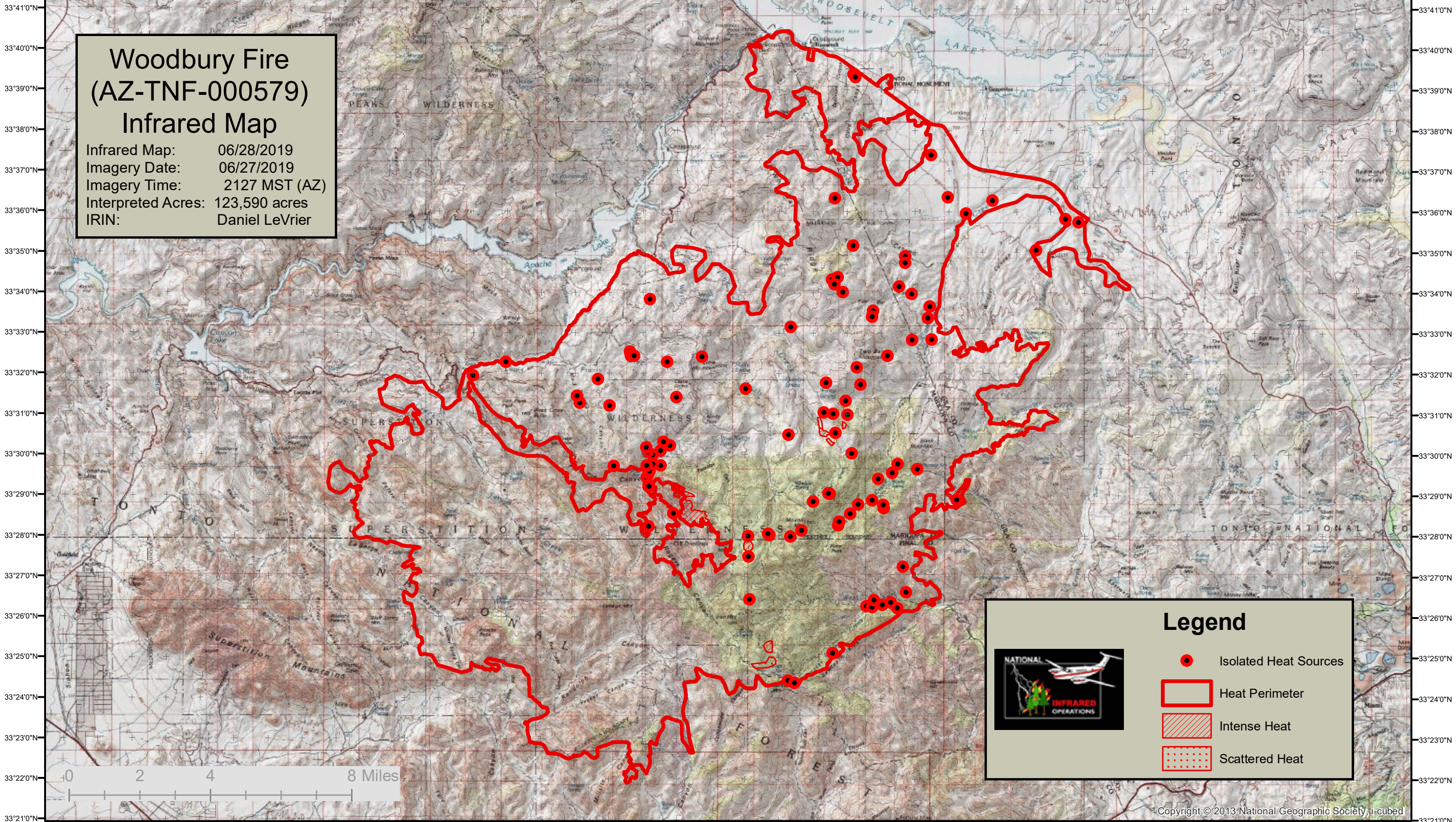


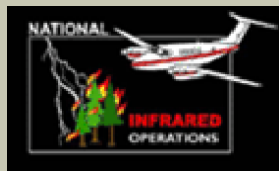
111°29'0"W 111°27'0"W 111°25'0"W 111°23'0"W 111°21'0"W 111°19'0"W 111°17'0"W 111°15'0"W 111°13'0"W 111°11'0"W 111°9'0"W 111°7'0"W 111°5'0"W 111°3'0"W 111°1'0"W 110°59'0"W 110°57'0"W 110°55'0"W 110°53'0"W 110°51'0"W



**Woodbury Fire
(AZ-TNF-000579)
Infrared Map**
Infrared Map: 06/28/2019
Imagery Date: 06/27/2019
Imagery Time: 2127 MST (AZ)
Interpreted Acres: 123,590 acres
IRIN: Daniel LeVrier

Legend

- Isolated Heat Sources
- Heat Perimeter
- Intense Heat
- Scattered Heat



0 2 4 8 Miles

111°29'0"W 111°27'0"W 111°25'0"W 111°23'0"W 111°21'0"W 111°19'0"W 111°17'0"W 111°15'0"W 111°13'0"W 111°11'0"W 111°9'0"W 111°7'0"W 111°5'0"W 111°3'0"W 111°1'0"W 110°59'0"W 110°57'0"W 110°55'0"W 110°53'0"W 110°51'0"W