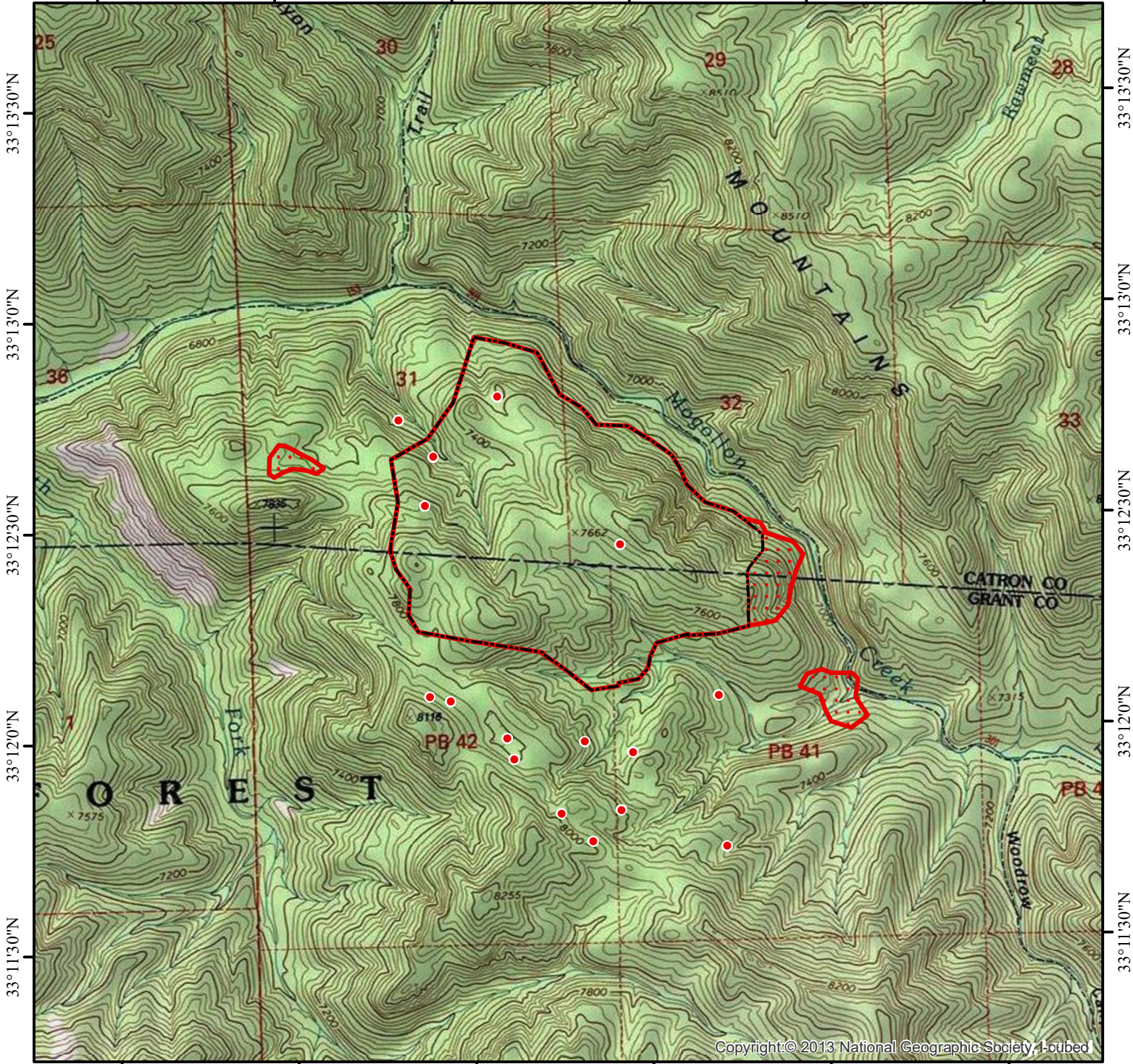






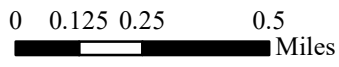
108°33'0"W 108°32'30"W 108°32'0"W 108°31'30"W 108°31'0"W 108°30'30"W

**INFRARED MAP**  
Woodrow  
NM-GNF-000278  
Interpreted (IR) Acres: 414  
July 8, 2019 @ 0107 MDT



33°13'30"N  
33°13'0"N  
33°12'30"N  
33°12'0"N  
33°11'30"N

-  Isolated Heat
-  GIS Perimeter (7/4/2019)
-  Heat Perimeter
-  Scattered Heat



Copyright: © 2013 National Geographic Society, i-cubed

*IRIN: Cheron Ferland  
Taos, NM  
Nad 83 UTM Zone 12*

108°33'0"W 108°32'30"W 108°32'0"W 108°31'30"W 108°31'0"W 108°30'30"W