

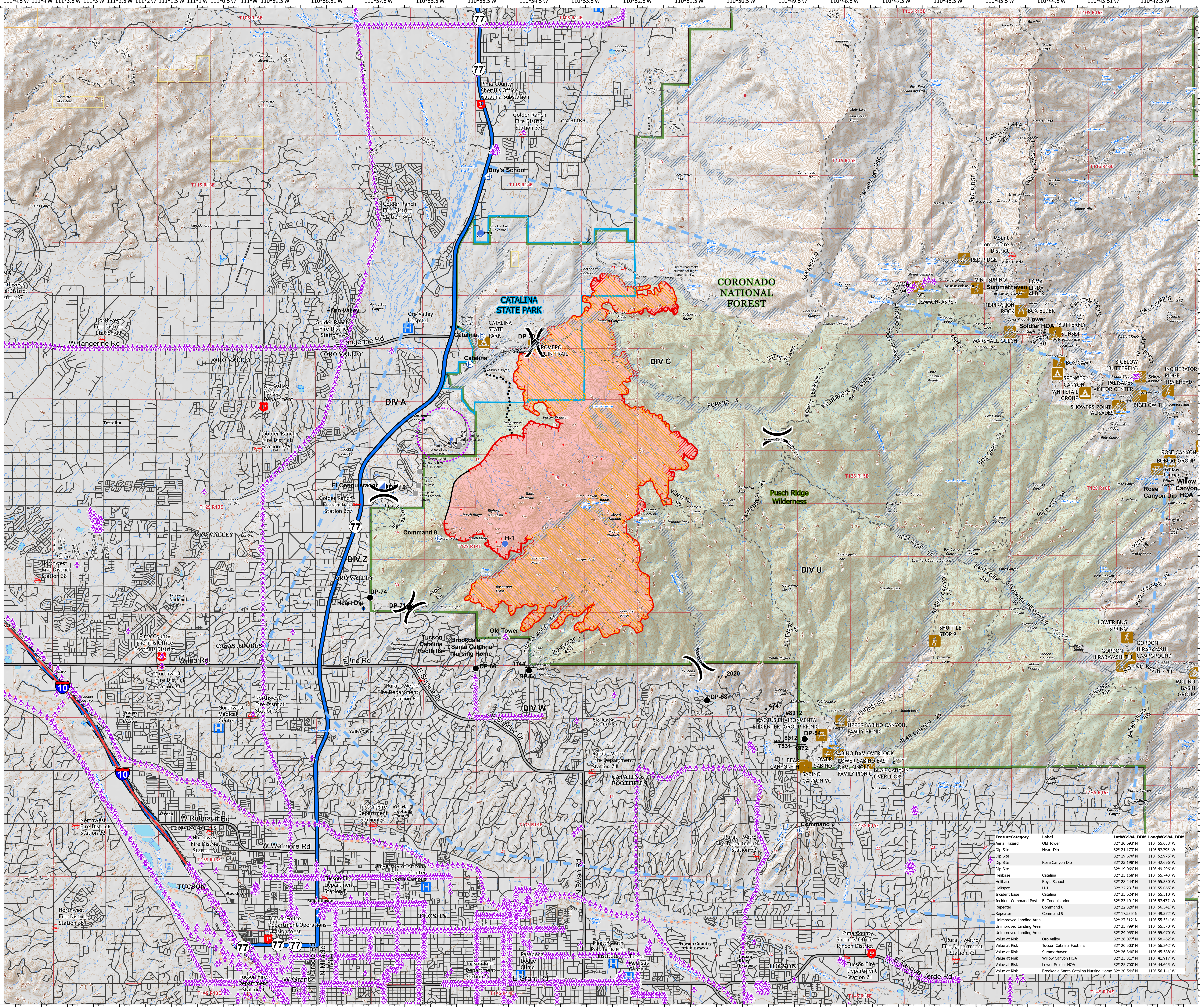
Air Ops

Bighorn
AZ-CNF-413
6/13/2020 Day

10,367 acres at 6/12/2020 2256



- IR Isolated Heat Source
- ▨ IR Intense Heat
- ▨ IR Scattered Heat
- ▲ Aerial Hazard
- ✕ Closure
- Dip Site
- Drop Point
- ⊖ Gate
- ⊕ Helibase
- Unimproved Landing Area
- Helispot
- ⊕ Incident Base
- ⊕ Incident Command Post
- ⊕ Lookout
- ⊕ Repeater
- ⊕ Value at Risk
- Other
- ⌘ Division Break
- ▬ Uncontrolled Fire Edge
- ▬ Contained Line
- ▬ Completed Hand Line
- ▬ Access or Improved Road
- ▬ Planned Secondary Line
- ▬ Temporary Flight Restriction
- ▬ UAS Launch and Recovery Zone
- ⊕ Hospital
- ⊕ Fire Station
- ⊕ Law Enforcement
- ⊕ Campground
- ⊕ Visitor/Information Center
- ⊕ Trailhead
- ⊕ Picnic Area
- ▬ Controlled access
- ▬ Highway or ramp
- ▬ Local connector
- ▬ Local or 4WD road
- ▬ CNF Trail
- ▬ Catalina State Park
- ▬ Coronado National Forest
- ▬ Bureau of Land Management
- ▬ National Park Service
- ▬ Retardant Avoidance Area
- ▬ Wildfire Daily Fire Perimeter
- ▬ Wilderness



cbeye
6/13/2020 0505
Acres from IR
North American 1983 Datum. Lat/Long
Grid

| Feature/Category | Label | LatWGS84_DDM | LongWGS84_DDM |
|-------------------------|---------------------------------------|---------------|----------------|
| Old Tower | Old Tower | 32° 20.693' N | 110° 55.053' W |
| Aerial Hazard | Heart Dip | 32° 21.177' N | 110° 52.799' W |
| Dip Site | Heart Dip | 32° 19.678' N | 110° 52.975' W |
| Dip Site | Rose Canyon Dip | 32° 23.198' N | 110° 42.696' W |
| Dip Site | Rose Canyon Dip | 32° 19.069' N | 110° 49.296' W |
| Helibase | Catalina | 32° 25.168' N | 110° 55.740' W |
| Helibase | Boy's School | 32° 28.244' N | 110° 55.380' W |
| Helispot | Catalina | 32° 22.221' N | 110° 55.065' W |
| Incident Base | Catalina | 32° 25.624' N | 110° 55.510' W |
| Incident Command Post | El Conquistador | 32° 23.191' N | 110° 57.437' W |
| Repeater | Command 8 | 32° 22.320' N | 110° 56.341' W |
| Repeater | Command 9 | 32° 17.535' N | 110° 49.372' W |
| Unimproved Landing Area | Command 8 | 32° 27.312' N | 110° 55.531' W |
| Unimproved Landing Area | Command 9 | 32° 25.797' N | 110° 55.570' W |
| Unimproved Landing Area | Command 8 | 32° 24.059' N | 110° 55.070' W |
| Value at Risk | Oro Valley | 32° 26.077' N | 110° 58.462' W |
| Value at Risk | Tucson Catalina Foothills | 32° 20.503' N | 110° 56.242' W |
| Value at Risk | Summerhaven | 32° 26.340' N | 110° 45.588' W |
| Value at Risk | Willow Canyon HOA | 32° 23.317' N | 110° 41.917' W |
| Value at Risk | Lower Soldier HOA | 32° 25.702' N | 110° 44.662' W |
| Value at Risk | Brookdale Santa Catalina Nursing Home | 32° 20.549' N | 110° 56.141' W |