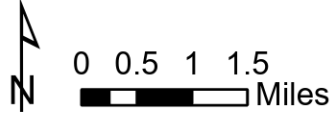


# Pilot Map

Bighorn  
AZ-CNF-413  
6/13/2020 Day

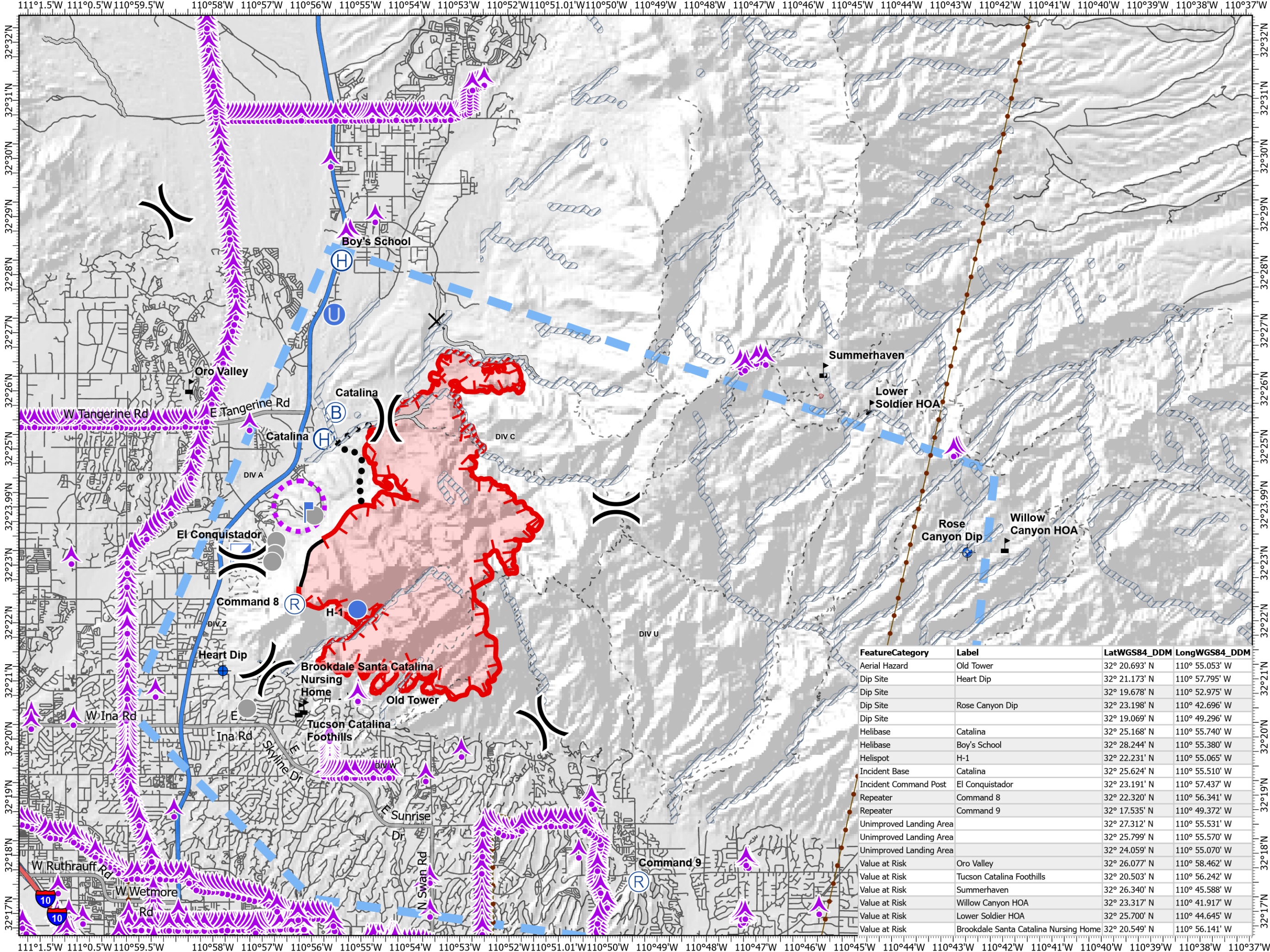
10,367 acres at 6/12/2020 2256



- Aerial Hazard
- Closure
- Dip Site
- Helibase
- Unimproved Landing Area
- Helispot
- Incident Base
- Incident Command Post
- Lookout
- Repeater
- Value at Risk
- Other
- Uncontrolled Fire Edge
- Contained Line
- Completed Hand Line
- Access or Improved Road
- Planned Secondary Line
- Temporary Flight Restriction
- UAS Launch and Recovery Zone
- Wildfire Daily Fire Perimeter
- Controlled access
- Highway or ramp
- Local connector
- Local or 4WD road

) ( Division  
] [ Branch

cbeye  
6/13/2020 0713  
Acres from IR  
North American 1983 Datum.



FeatureCategory	Label	LatWGS84_DDM	LongWGS84_DDM
Aerial Hazard	Old Tower	32° 20.693' N	110° 55.053' W
Dip Site	Heart Dip	32° 21.173' N	110° 57.795' W
Dip Site	Rose Canyon Dip	32° 23.198' N	110° 42.696' W
Dip Site		32° 19.069' N	110° 49.296' W
Helibase	Catalina	32° 25.168' N	110° 55.740' W
Helibase	Boy's School	32° 28.244' N	110° 55.380' W
Helispot	H-1	32° 22.231' N	110° 55.065' W
Incident Base	Catalina	32° 25.624' N	110° 55.510' W
Incident Command Post	El Conquistador	32° 23.191' N	110° 57.437' W
Repeater	Command 8	32° 22.320' N	110° 56.341' W
Repeater	Command 9	32° 17.535' N	110° 49.372' W
Unimproved Landing Area		32° 27.312' N	110° 55.531' W
Unimproved Landing Area		32° 25.799' N	110° 55.570' W
Unimproved Landing Area		32° 24.059' N	110° 55.070' W
Value at Risk	Oro Valley	32° 26.077' N	110° 58.462' W
Value at Risk	Tucson Catalina Foothills	32° 20.503' N	110° 56.242' W
Value at Risk	Summerhaven	32° 26.340' N	110° 45.588' W
Value at Risk	Willow Canyon HOA	32° 23.317' N	110° 41.917' W
Value at Risk	Lower Soldier HOA	32° 25.700' N	110° 44.645' W
Value at Risk	Brookdale Santa Catalina Nursing Home	32° 20.549' N	110° 56.141' W