

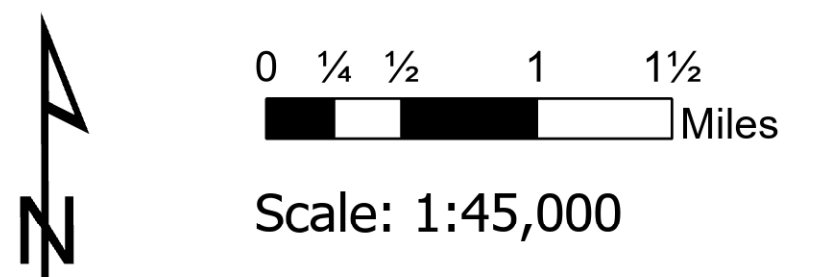
# Air Ops

## Bighorn

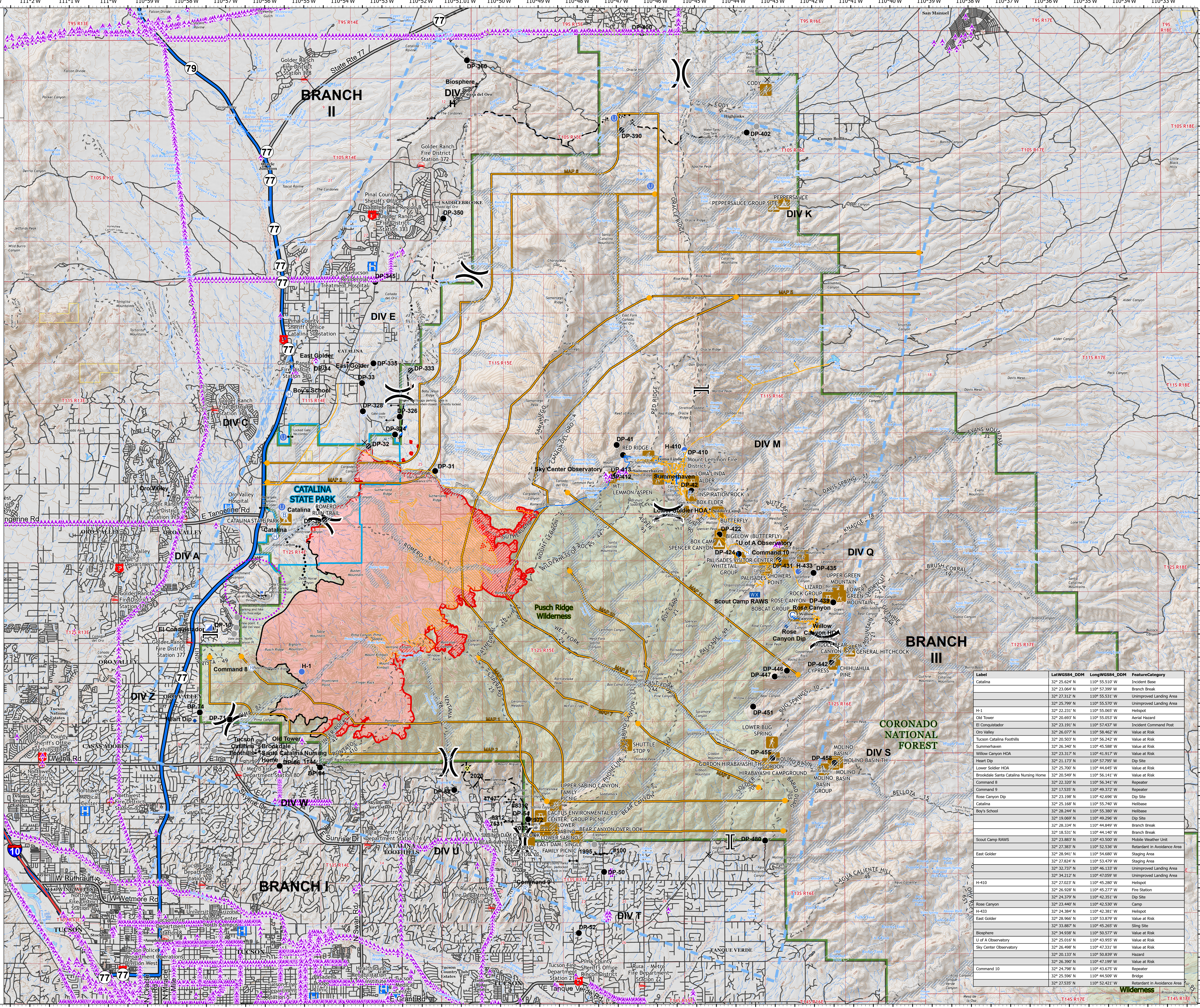
### AZ-CNF-413

#### 6/16/2020 Day

15,805 acres at 6/15/2020 2230



- IR Intense Heat
- IR Scattered Heat
- Aerial Hazard
- Bridge
- Camp
- Closure
- Dip Site
- Fire Station
- Gate
- Hazard
- Helibase
- Unimproved Landing Area
- Helispot
- Incident Base
- Incident Command Post
- Lookout
- Mobile Weather Unit
- Repeater
- Retardant in Avoidance Area
- Sling Site
- Staging Area
- Value at Risk
- Other
- Division Break
- Branch Break
- Uncontrolled Fire Edge
- Contained Line
- Completed Hand Line
- Road as Completed Line
- Access or Improved Road
- Proposed Burnout
- Proposed Dozer Line
- Fire Break Planned or Incomplete
- Planned Fire Line
- Planned Secondary Line
- Aerial Ignition
- Temporary Flight Restriction
- UAS Launch and Recovery Zone
- Escape Route
- Management Action Point
- Hospital
- Fire Station
- Law Enforcement
- Campground
- Visitor/Information Center
- Trailhead
- Picnic Area
- Controlled access
- Highway or ramp
- Local connector
- Local or 4WD road
- CNF Trail
- Catalina State Park
- Coronado National Forest
- Bureau of Land Management
- National Park Service
- Retardant Avoidance Area
- Wildlife Daily Fire Perimeter
- Wilderness
- Label Point
- TriCo Lines
- Overhead
- Underground



Label	LatWGS84_DDM	LongWGS84_DDM	FeatureCategory
Catalina	32° 25.624' N	110° 55.510' W	Incident Base
Branch Break	32° 23.868' N	110° 57.299' W	Branch Break
Unimproved Landing Area	32° 27.312' N	110° 55.531' W	Unimproved Landing Area
Unimproved Landing Area	32° 25.799' N	110° 55.570' W	Unimproved Landing Area
Helispot	32° 22.231' N	110° 55.065' W	Helispot
Aerial Hazard	32° 20.693' N	110° 55.053' W	Aerial Hazard
Incident Command Post	32° 23.191' N	110° 57.437' W	Incident Command Post
Value at Risk	32° 26.077' N	110° 58.462' W	Value at Risk
Value at Risk	32° 20.503' N	110° 56.242' W	Value at Risk
Value at Risk	32° 26.340' N	110° 45.588' W	Value at Risk
Value at Risk	32° 23.317' N	110° 41.917' W	Value at Risk
Dip Site	32° 21.173' N	110° 57.795' W	Dip Site
Value at Risk	32° 25.700' N	110° 44.645' W	Value at Risk
Value at Risk	32° 20.549' N	110° 56.141' W	Value at Risk
Repeater	32° 22.320' N	110° 56.341' W	Repeater
Repeater	32° 17.535' N	110° 49.272' W	Repeater
Dip Site	32° 23.198' N	110° 42.696' W	Dip Site
Helibase	32° 25.448' N	110° 55.740' W	Helibase
Helibase	32° 28.244' N	110° 55.380' W	Helibase
Dip Site	32° 19.069' N	110° 49.296' W	Dip Site
Branch Break	32° 28.334' N	110° 44.849' W	Branch Break
Branch Break	32° 18.531' N	110° 44.140' W	Branch Break
Mobile Weather Unit	32° 23.883' N	110° 43.500' W	Mobile Weather Unit
Retardant in Avoidance Area	32° 27.383' N	110° 52.536' W	Retardant in Avoidance Area
Staging Area	32° 28.941' N	110° 54.680' W	Staging Area
Staging Area	32° 27.824' N	110° 53.479' W	Staging Area
Unimproved Landing Area	32° 32.737' N	110° 46.133' W	Unimproved Landing Area
Unimproved Landing Area	32° 34.212' N	110° 47.059' W	Unimproved Landing Area
Helispot	32° 27.023' N	110° 45.280' W	Helispot
Fire Station	32° 26.928' N	110° 45.277' W	Fire Station
Camp Site	32° 24.379' N	110° 42.251' W	Camp Site
Camp	32° 23.448' N	110° 42.538' W	Camp
Helispot	32° 24.389' N	110° 42.381' W	Helispot
Value at Risk	32° 28.966' N	110° 53.879' W	Value at Risk
Sling Site	32° 33.887' N	110° 45.265' W	Sling Site
Value at Risk	32° 34.938' N	110° 50.577' W	Value at Risk
Value at Risk	32° 25.016' N	110° 43.955' W	Value at Risk
Value at Risk	32° 26.498' N	110° 47.331' W	Value at Risk
Value at Risk	32° 20.133' N	110° 50.839' W	Value at Risk
Value at Risk	32° 26.390' N	110° 47.199' W	Value at Risk
Repeater	32° 24.798' N	110° 43.675' W	Repeater
Bridge	32° 25.596' N	110° 44.509' W	Bridge
Retardant in Avoidance Area	32° 27.535' N	110° 52.421' W	Retardant in Avoidance Area
Wilderness			Wilderness



swalterscheid  
6/16/2020 0431  
Acres from IR  
North American 1983 Datum. LatLong  
Grid