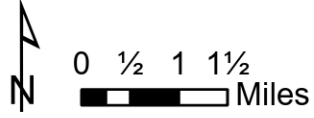


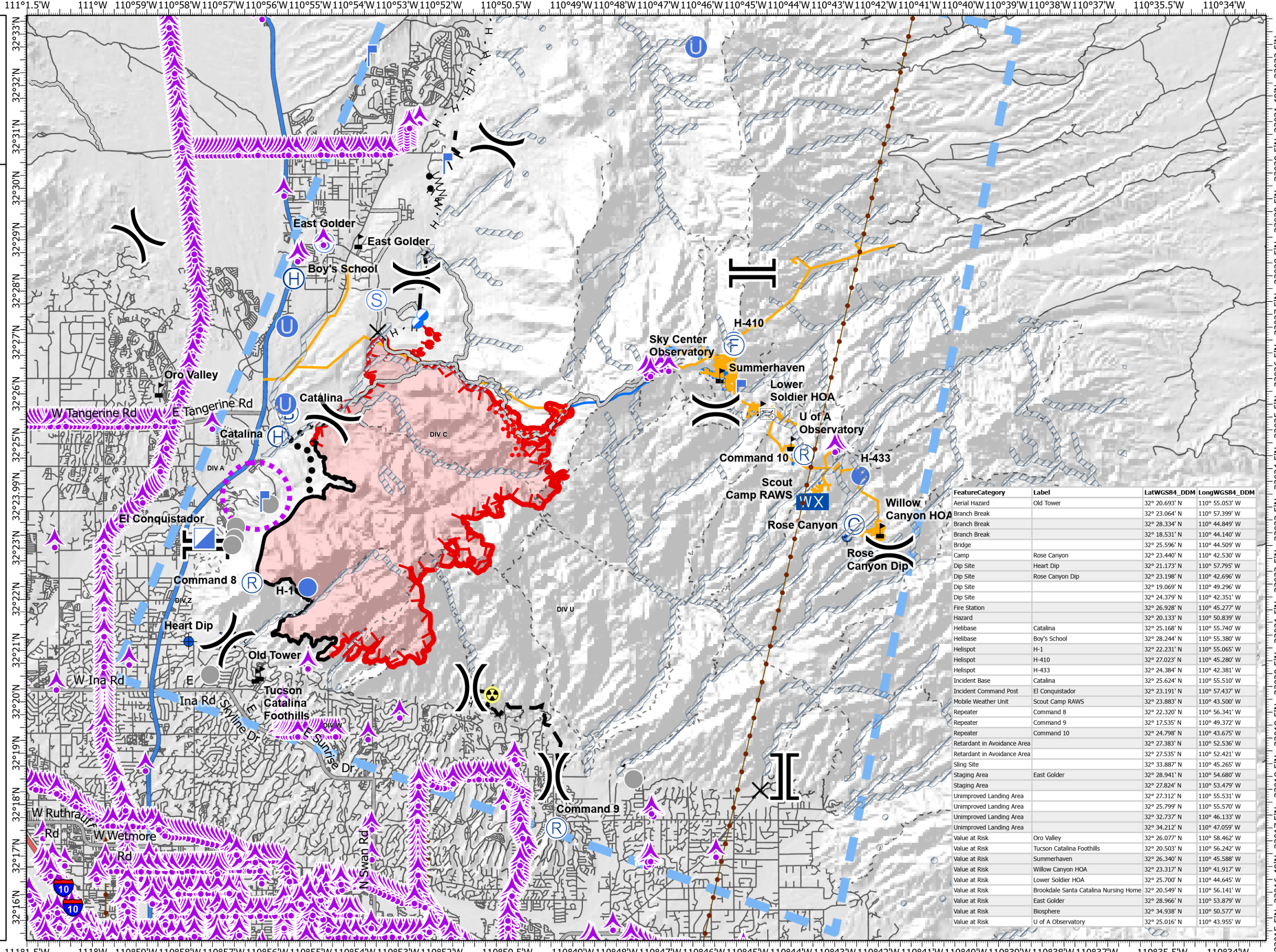
Pilot Map

Bighorn
AZ-CNF-413
6/16/2020 Day

15,805 acres at 6/15/2020 2230



- Aerial Hazard
- Bridge
- Camp
- Closure
- Dip Site
- Fire Station
- Hazard
- Helibase
- Unimproved Landing Area
- Helispot
- Incident Base
- Incident Command Post
- Lookout
- Mobile Weather Unit
- Repeater
- Retardant in Avoidance Area
- Staging Area
- Value at Risk
- Other
- Branch Break
- Uncontrolled Fire Edge
- Contained Line
- Completed Hand Line
- Road as Completed Line
- Access or Improved Road
- Proposed Burnout
- Fire Break Planned or Incomplete
- Planned Fire Line
- Planned Secondary Line
- Aerial Ignition
- Temporary Flight Restriction
- UAS Launch and Recovery Zone
- Escape Route
- Wildfire Daily Fire Perimeter
- Controlled access
- Highway or ramp
- Local connector
- Local or 4WD road
- Overhead lines
- Underground lines



FeatureCategory	Label	LatWGS84_DDM	LongWGS84_DDM
Aerial Hazard	Old Tower	32° 20.693' N	110° 55.053' W
Branch Break		32° 23.064' N	110° 57.399' W
Branch Break		32° 28.334' N	110° 44.849' W
Branch Break		32° 18.531' N	110° 44.140' W
Bridge		32° 25.596' N	110° 44.509' W
Camp	Rose Canyon	32° 23.440' N	110° 42.530' W
Dip Site	Heart Dip	32° 21.173' N	110° 57.795' W
Dip Site	Rose Canyon Dip	32° 23.198' N	110° 42.696' W
Dip Site		32° 19.069' N	110° 49.296' W
Dip Site		32° 24.379' N	110° 42.351' W
Fire Station		32° 26.928' N	110° 45.277' W
Hazard		32° 20.133' N	110° 50.839' W
Helibase	Catalina	32° 25.168' N	110° 55.740' W
Helibase	Boy's School	32° 28.244' N	110° 55.380' W
Helispot	H-1	32° 22.231' N	110° 55.065' W
Helispot	H-410	32° 27.023' N	110° 45.280' W
Helispot	H-433	32° 24.384' N	110° 42.381' W
Incident Base	Catalina	32° 25.624' N	110° 55.510' W
Incident Command Post	El Conquistador	32° 23.191' N	110° 57.437' W
Mobile Weather Unit	Scout Camp RAWs	32° 23.883' N	110° 43.500' W
Repeater	Command 8	32° 22.320' N	110° 56.341' W
Repeater	Command 9	32° 17.535' N	110° 49.372' W
Repeater	Command 10	32° 24.798' N	110° 43.675' W
Retardant in Avoidance Area		32° 27.383' N	110° 52.536' W
Retardant in Avoidance Area		32° 27.535' N	110° 52.421' W
Sling Site		32° 33.887' N	110° 45.265' W
Staging Area	East Golder	32° 28.941' N	110° 54.680' W
Staging Area		32° 27.824' N	110° 53.479' W
Unimproved Landing Area		32° 27.312' N	110° 55.531' W
Unimproved Landing Area		32° 25.799' N	110° 55.570' W
Unimproved Landing Area		32° 32.737' N	110° 46.133' W
Unimproved Landing Area		32° 34.212' N	110° 47.059' W
Value at Risk	Oro Valley	32° 26.077' N	110° 58.462' W
Value at Risk	Tucson Catalina Foothills	32° 20.503' N	110° 56.242' W
Value at Risk	Summerhaven	32° 26.340' N	110° 45.588' W
Value at Risk	Willow Canyon HOA	32° 23.317' N	110° 41.917' W
Value at Risk	Lower Soldier HOA	32° 25.700' N	110° 44.645' W
Value at Risk	Brookdale Santa Catalina Nursing Home	32° 20.549' N	110° 56.141' W
Value at Risk	East Golder	32° 28.966' N	110° 53.879' W
Value at Risk	Biosphere	32° 34.938' N	110° 50.577' W
Value at Risk	U of A Observatory	32° 25.016' N	110° 43.955' W

swalterscheid
6/16/2020 0447
Acres from IR
North American 1983 Datum.