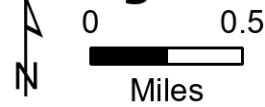


# IAP Map

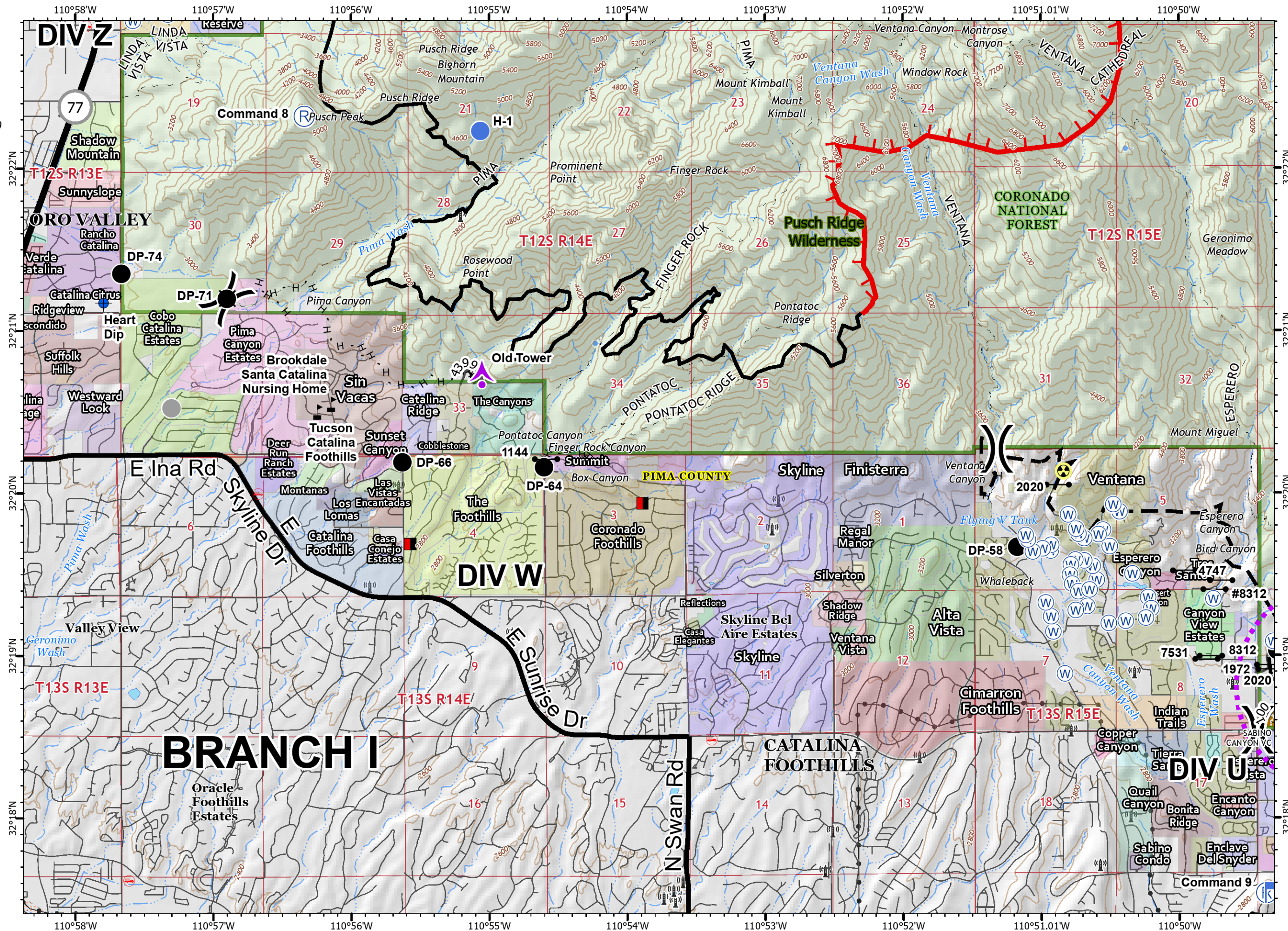
Bighorn  
AZ-CNF-413  
6/18/2020 Day

23,892 acres at 6/17/2020 18:00

Page 1



- Aerial Hazard
- Closure
- Dip Site
- Drop Point
- Gate
- Hazard
- Helispot
- Lookout
- Repeater
- Water Source
- Value at Risk
- Other
- Division Break
- Mines
- Uncontrolled Fire Edge
- Contained Line
- Completed Hand Line
- Planned Fire Line
- UAS Launch and Recovery Zone
- Coronado National Forest
- County or Equivalent
- Communication Towers
- Transmission Lines
- Visitor/Information Center
- Trailhead
- Wilderness





# IAP Map

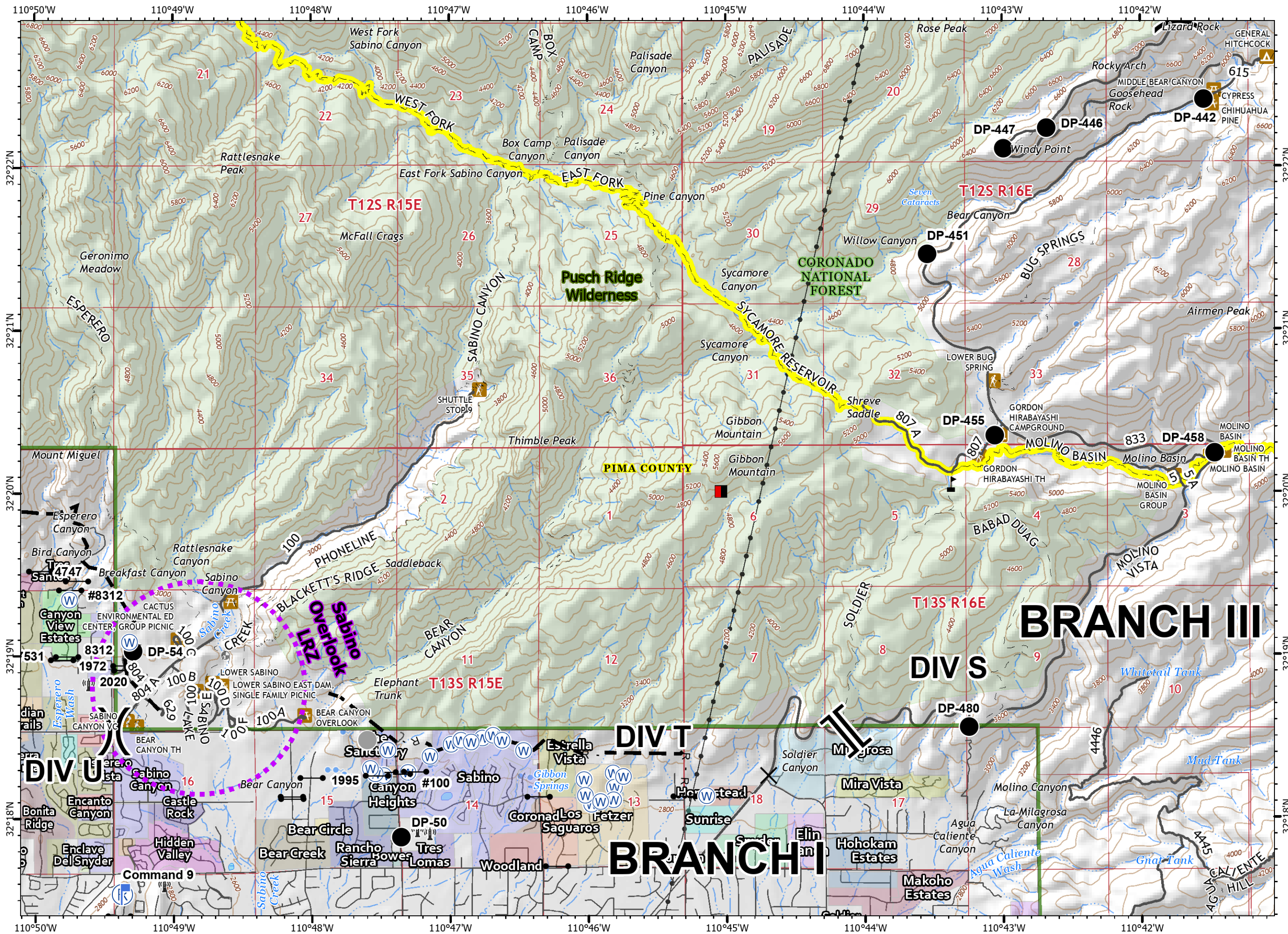
Bighorn  
AZ-CNF-413  
6/18/2020 Day

23,892 acres at 6/17/2020 18:00

Page 2



- X Closure
- Dip Site
- Drop Point
- Gate
- Lookout
- Repeater
- Water Source
- Value at Risk
- Other
- Division Break
- Branch Break
- Mines
- R Road as Completed Line
- Planned Fire Line
- UAS Launch and Recovery Zone
- Coronado National Forest
- County or Equivalent
- Communication\_Towers
- Transmission Lines
- Visitor/Information Center
- Trailhead
- Picnic Area
- Campground
- Wilderness
- Trails
- Arizona Trail



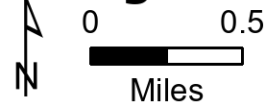


# IAP Map

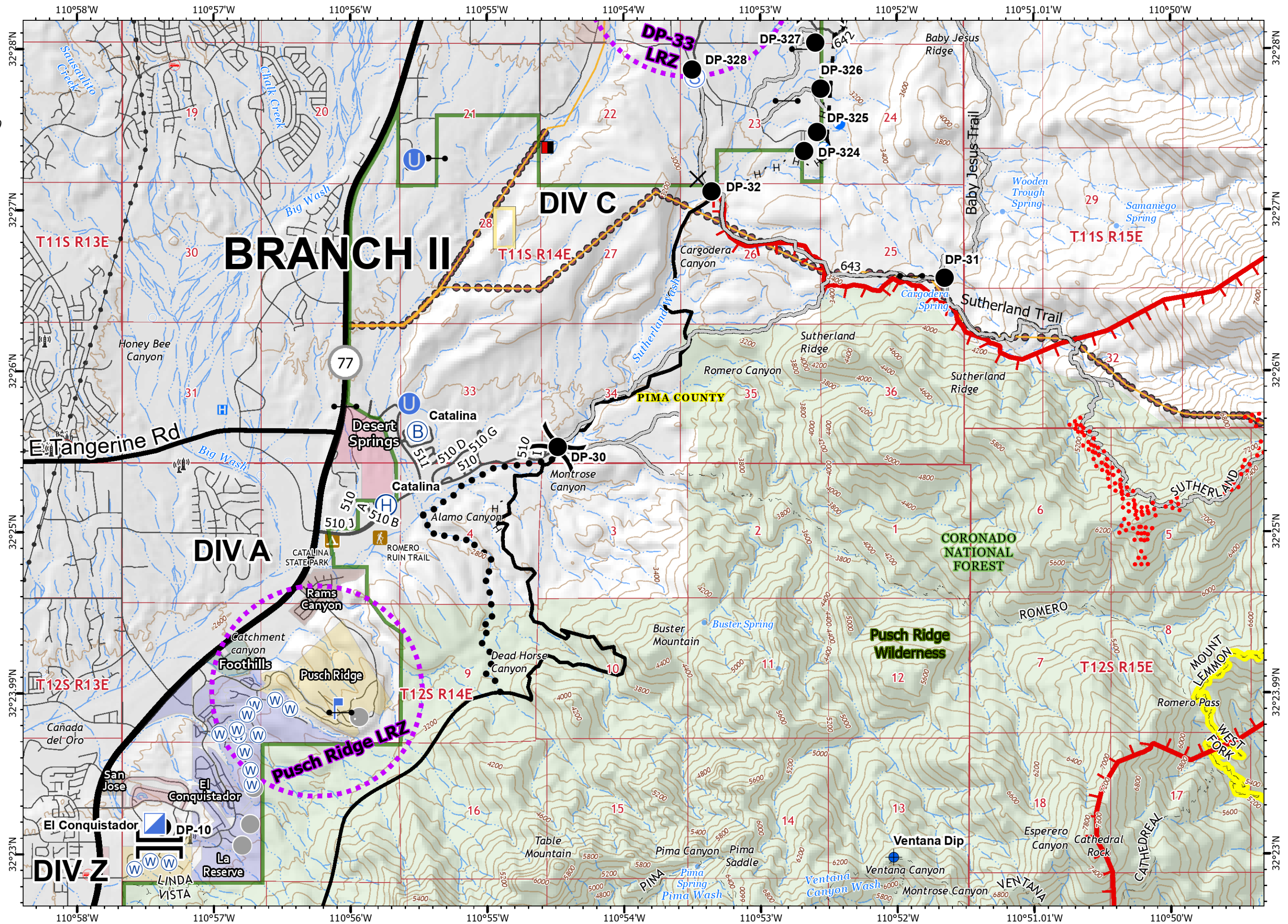
Bighorn  
AZ-CNF-413  
6/18/2020 Day

23,892 acres at 6/17/2020 18:00

Page 3



- X Closure
- Dip Site
- Drop Point
- Gate
- ⊕ Helibase
- ⊕ Unimproved Landing Area
- ⊕ Incident Base
- ⊕ Incident Command Post
- ⊕ Lookout
- ⊕ Retardant in Avoidance Area
- ⊕ Staging Area
- ⊕ Water Source
- ⊕ Value at Risk
- ⊕ Other
- Division Break
- Branch Break
- Mines
- Uncontrolled Fire Edge
- Contained Line
- H Completed Hand Line
- R Road as Completed Line
- Access or Improved Road
- Planned Fire Line
- Planned Secondary Line
- Aerial Ignition
- UAS Launch and Recovery Zone
- Coronado National Forest
- Bureau of Land Management
- County or Equivalent
- ⊕ Communication\_Towers
- Overhead power
- Transmission Lines
- ⊕ Trailhead
- ⊕ Campground
- Wilderness
- Trails
- Arizona Trail





# IAP Map

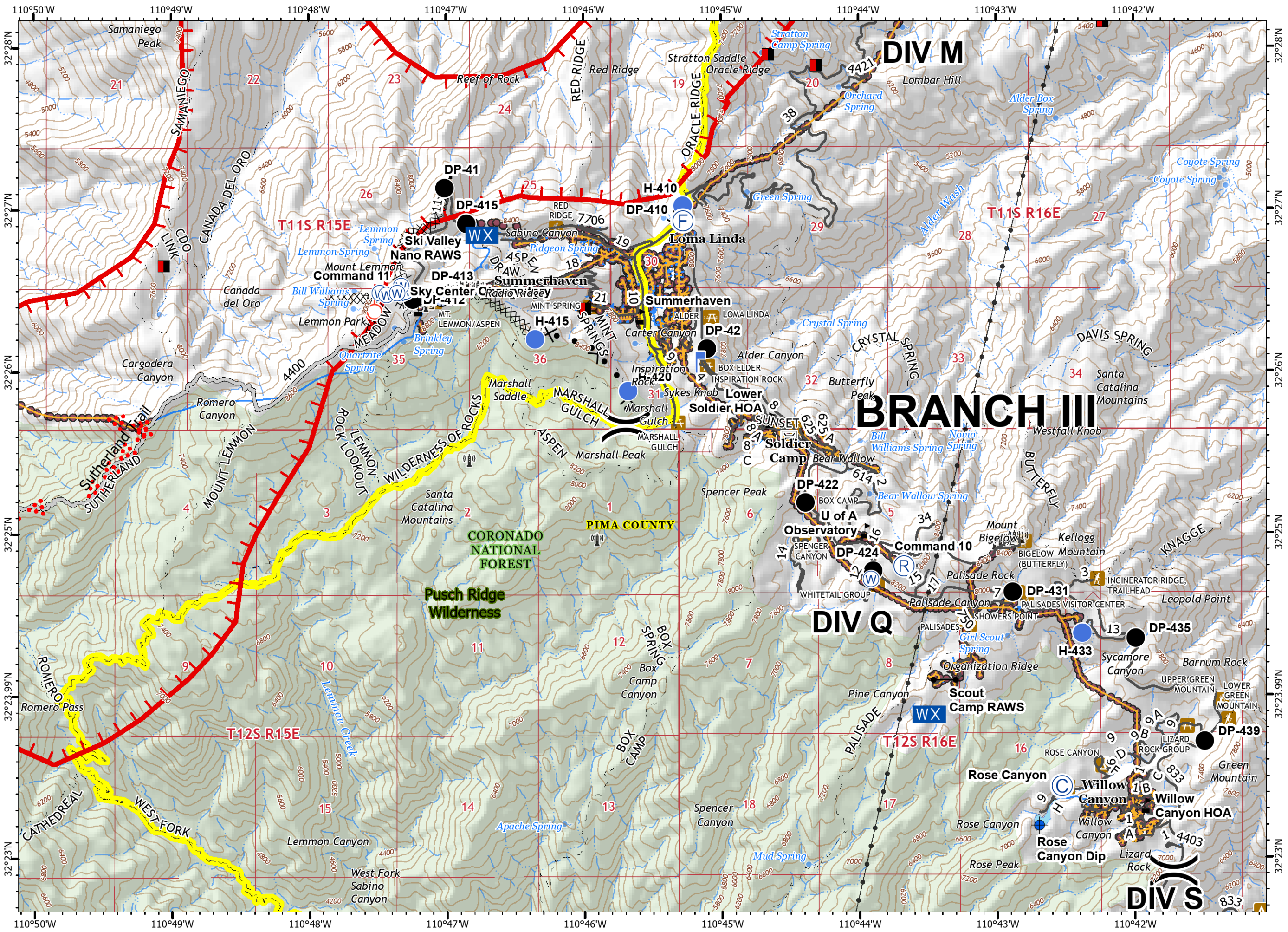
Bighorn  
AZ-CNF-413  
6/18/2020 Day

23,892 acres at 6/17/2020 18:00

Page 4



- Bridge
- Camp
- Dip Site
- Drop Point
- Fire Station
- Gate
- Helispot
- Lookout
- Mobile Weather Unit
- Repeater
- Spot Fire
- Water Source
- Water Development or Draft Site
- Value at Risk
- Division Break
- Mines
- Uncontrolled Fire Edge
- Completed Dozer Line
- Completed Hand Line
- Access or Improved Road
- Proposed Burnout
- Proposed Dozer Line
- Planned Fire Line
- Aerial Ignition
- Road Repair
- Coronado National Forest
- County or Equivalent
- Communication\_Towers
- Overhead power
- Underground power
- Transmission Lines
- Visitor/Information Center
- Trailhead
- Picnic Area
- Campground
- Wilderness
- Trails
- Arizona Trail





# IAP Map

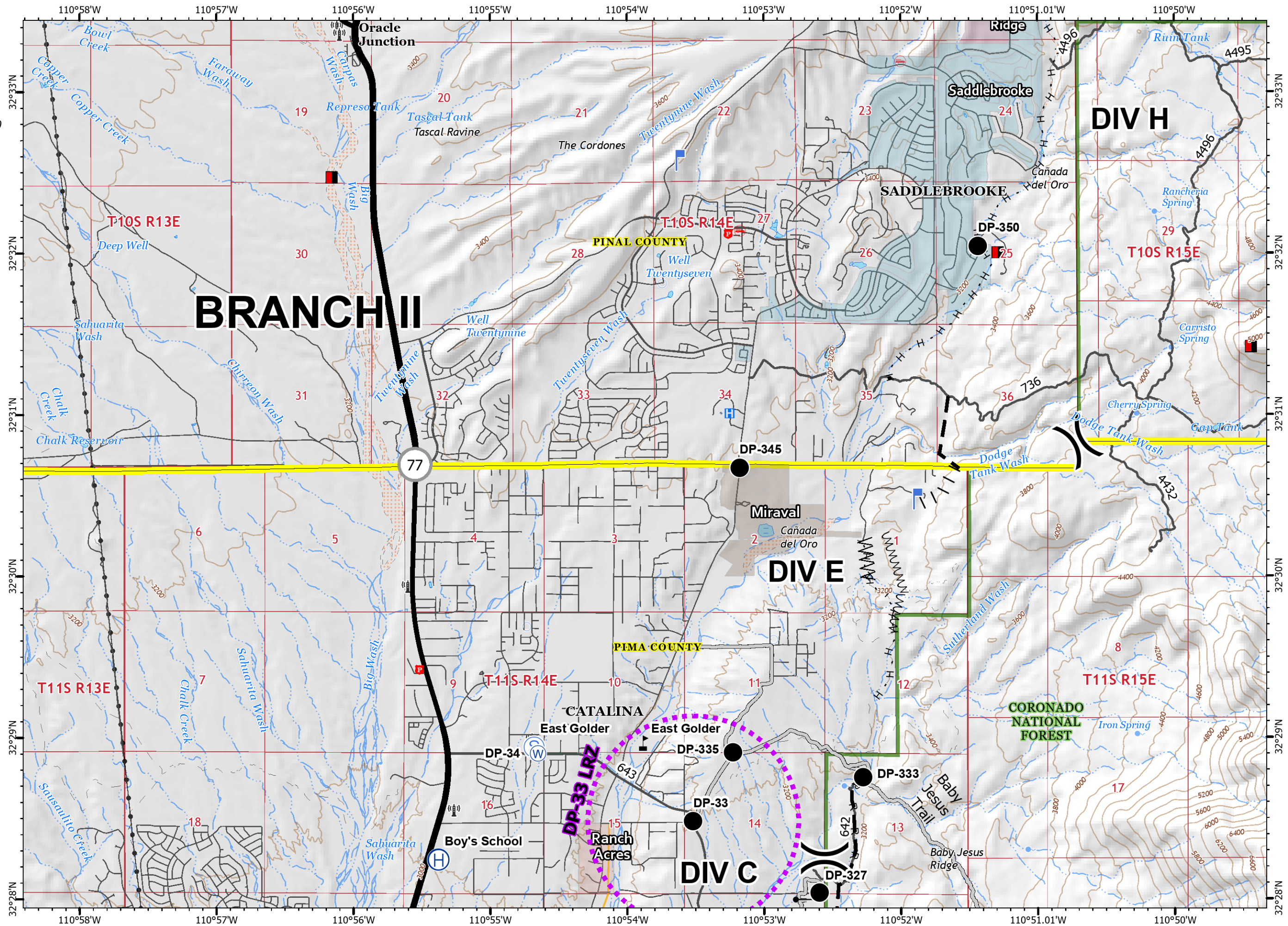
Bighorn  
AZ-CNF-413  
6/18/2020 Day

23,892 acres at 6/17/2020 18:00

Page 5



- Drop Point
- ⬇ Gate
- ⊕ Helibase
- ⊕ Lookout
- ⊕ Staging Area
- ⊕ Water Source
- ⊕ Value at Risk
- ⊕ Division Break
- ⊕ Mines
- H Completed Hand Line
- R Road as Completed Line
- Access or Improved Road
- Line Break Completed
- - - Proposed Burnout





# IAP Map

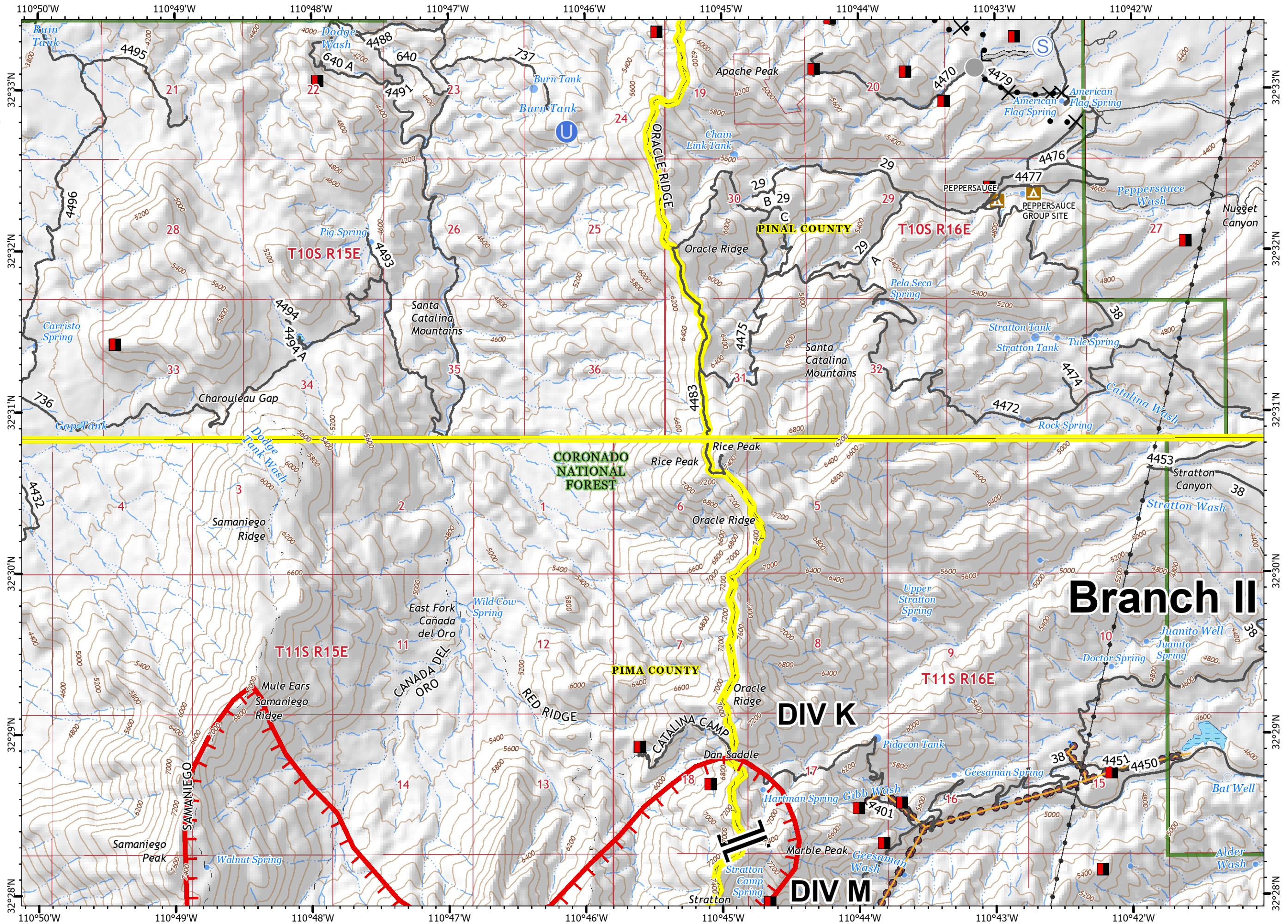
Bighorn  
AZ-CNF-413  
6/18/2020 Day

23,892 acres at 6/17/2020 18:00

Page 6



- Unimproved Landing Area
  - Staging Area
  - Other
  - Branch Break
  - Mines
  - Uncontrolled Fire Edge
  - Road as Completed Line
  - Access or Improved Road
  - Proposed Dozer Line
  - Coronado National Forest
  - County or Equivalent
- Utility Infrastructure
- Overhead power
  - Underground power
  - Transmission Lines
  - Campground
  - Trails
  - Arizona Trail



## Branch II

### DIV K

### DIV M



# IAP Map

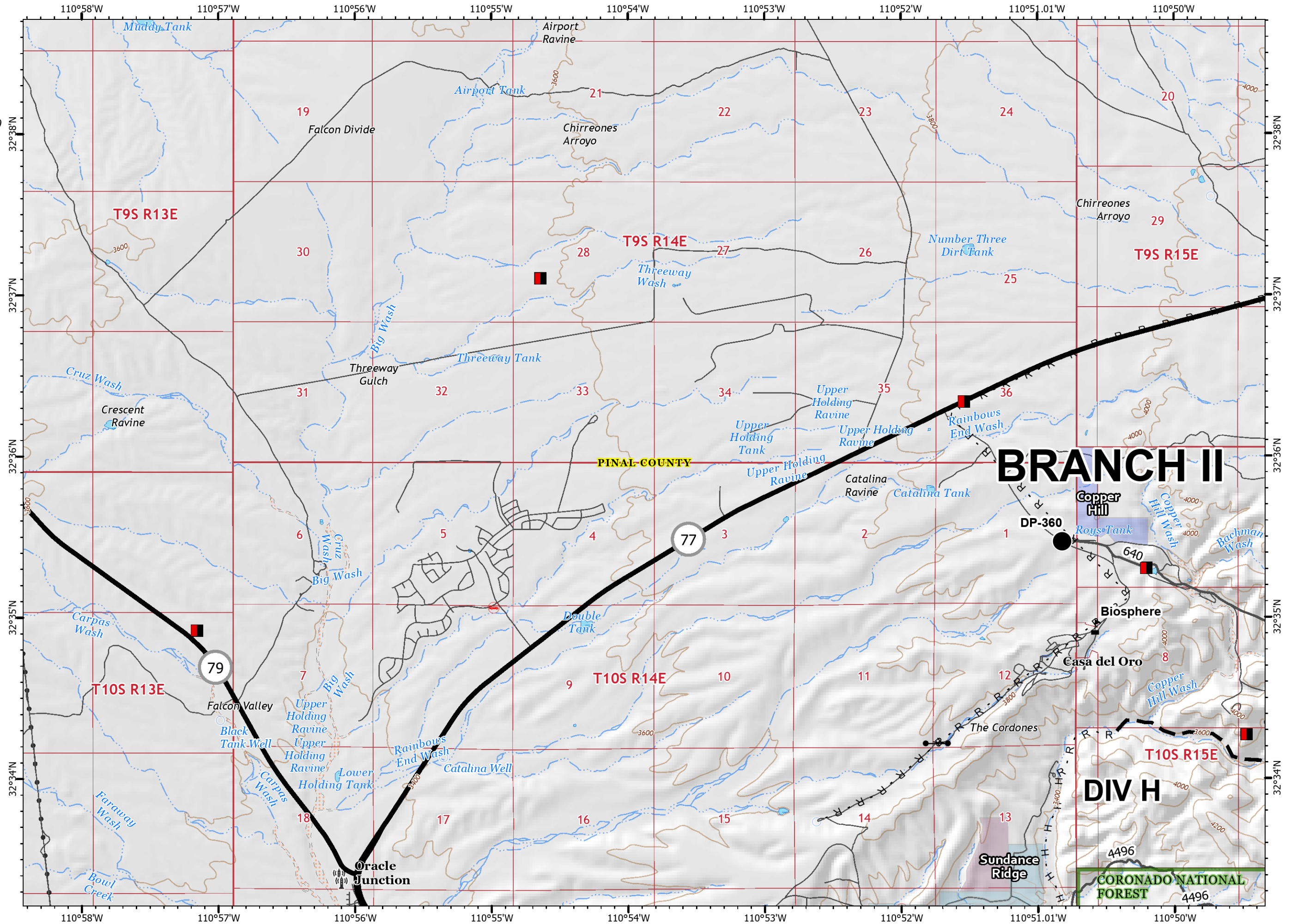
Bighorn  
AZ-CNF-413  
6/18/2020 Day

23,892 acres at 6/17/2020 18:00

Page 7



- Drop Point
- Gate
- Value at Risk
- Mines
- H Completed Hand Line
- R Road as Completed Line
- Planned Fire Line
- Coronado National Forest
- County or Equivalent
- Communication\_Towers
- Transmission Lines





# IAP Map

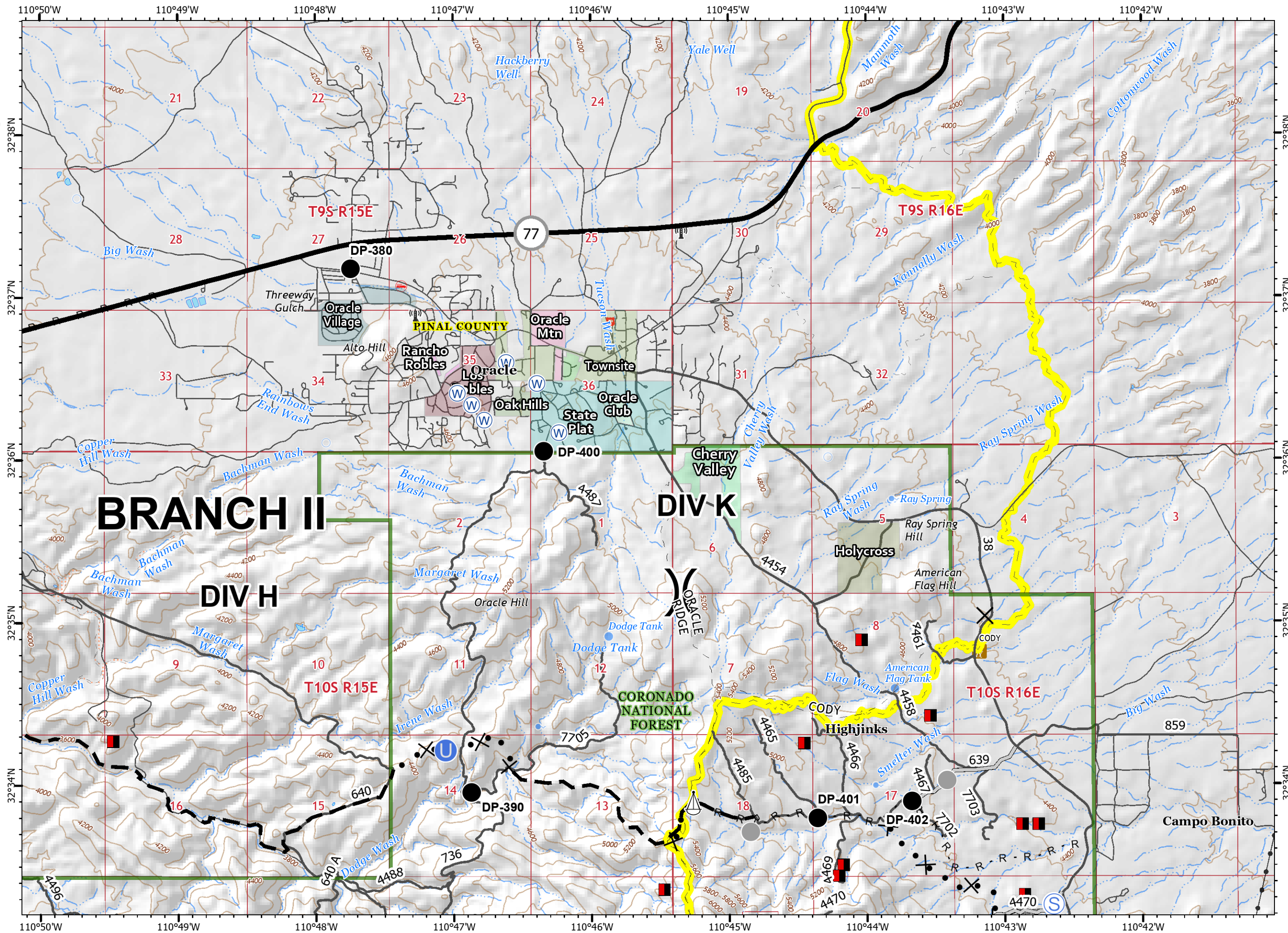
Bighorn  
AZ-CNF-413  
6/18/2020 Day

23,892 acres at 6/17/2020 18:00

Page 8



- X Closure
- Drop Point
- Unimproved Landing Area
- ▲ Sling Site
- ⊙ Staging Area
- ⊙ Water Source
- Other
- ) Division Break
- Mines
- R Road as Completed Line
- Access or Improved Road
- X• Proposed Dozer Line
- Planned Fire Line
- Coronado National Forest
- County or Equivalent
- ⊙ Communication\_Towers
- Transmission Lines
- ▲ Trailhead
- Trails
- Arizona Trail



## BRANCH II

## DIV H

## DIV K

### CORONADO NATIONAL FOREST