

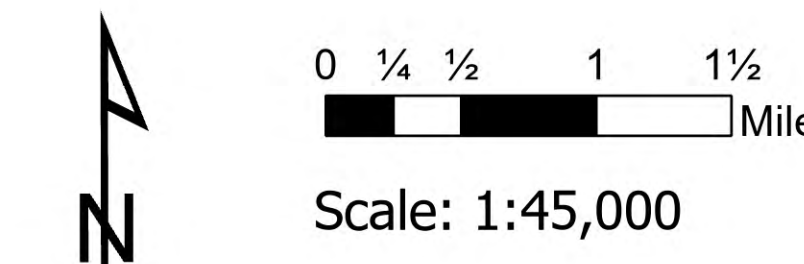
Air Ops

Bighorn

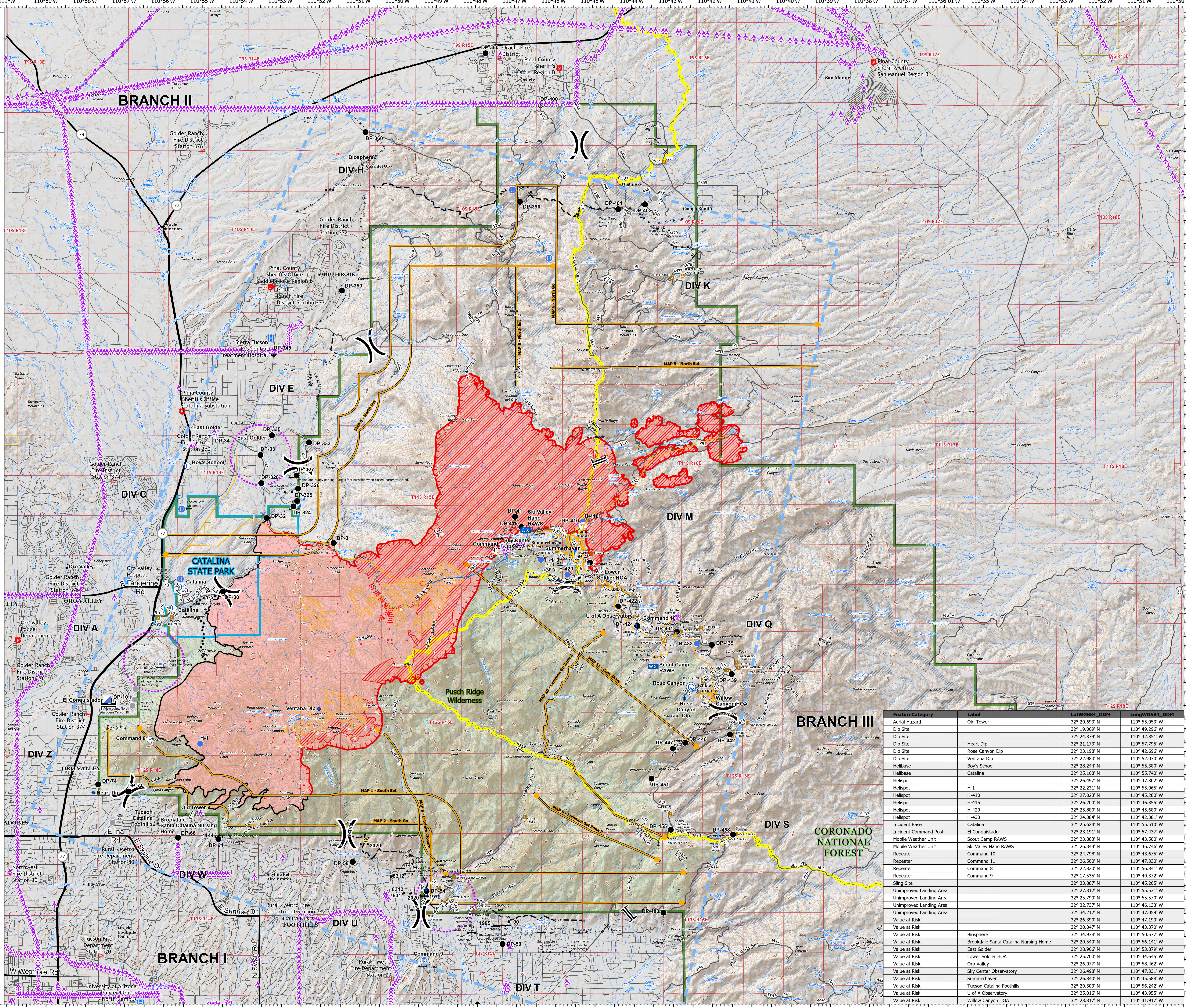
AZ-CNF-413

6/18/2020 Day

31,208 acres at 6/17/2020 2133



- IR Isolated Heat Source
- ▨ IR Intense Heat
- ▨ IR Scattered Heat
- ▲ Aerial Hazard
- Bridge
- X Closure
- Dip Site
- Fire Station
- Gate
- Hazard
- Helibase
- Unimproved Landing Area
- Helispot
- Incident Base
- Incident Command Post
- Lookout
- Mobile Weather Unit
- Repeater
- Retardant in Avoidance Area
- Sling Site
- Spot Fire
- Staging Area
- Water Development or Draft Site
- Value at Risk
- Other
- Division Break
- Branch Break
- Aerial Hazard
- ▨ Uncontrolled Fire Edge
- ▨ Contained Line
- ▨ Completed Dozer Line
- ▨ Completed Hand Line
- ▨ Road as Completed Line
- ▨ Access or Improved Road
- ▨ Line Break Completed
- ▨ Proposed Burnout
- ▨ Proposed Dozer Line
- ▨ Fire Break Planned or Incomplete
- ▨ Planned Fire Line
- ▨ Planned Secondary Line
- Aerial Ignition
- ▨ Temporary Flight Restriction
- ▨ UAS Launch and Recovery Zone
- ▨ Escape Route
- ▨ Road Repair
- ▨ Management Action Point
- ▨ Hospital
- ▨ Fire Station
- ▨ Law Enforcement
- ▨ Campground
- ▨ Visitor/Information Center
- ▨ Trailhead
- ▨ Picnic Area
- ▨ Catalina State Park
- ▨ Coronado National Forest
- ▨ Bureau of Land Management
- ▨ Retardant Avoidance Area
- ▨ Wildfire Daily Fire Perimeter
- ▨ Wilderness
- ▨ TriCo Lines
- ▨ Overhead
- ▨ Underground
- ▨ Transportation
- ▨ Highway Label
- ▨ Airport Point
- ▨ International or Military Airport
- ▨ City or Regional Airport
- ▨ Airstrip
- ▨ Census Road
- ▨ Controlled access
- ▨ Highway or ramp
- ▨ Local connector
- ▨ Local or 4WD road
- ▨ Tunnel
- ▨ Ferry
- ▨ FS Road
- ▨ Trails
- ▨ CNF Trail
- ▨ Arizona Trail
- ▨ Railroad



FeatureCategory	Label	LatWGS84_DDM	LongWGS84_DDM
Aerial Hazard	Old Tower	32° 20.693' N	110° 55.053' W
Dip Site		32° 19.069' N	110° 49.296' W
Dip Site		32° 24.379' N	110° 42.351' W
Dip Site	Heart Dip	32° 21.173' N	110° 57.795' W
Dip Site	Rose Canyon Dip	32° 23.198' N	110° 42.696' W
Dip Site	Ventana Dip	32° 22.980' N	110° 52.030' W
Helibase	Boy's School	32° 28.244' N	110° 55.380' W
Helibase	Catalina	32° 25.168' N	110° 55.740' W
Helispot		32° 26.497' N	110° 47.302' W
Helispot	H-1	32° 22.231' N	110° 55.065' W
Helispot	H-410	32° 27.023' N	110° 45.280' W
Helispot	H-415	32° 26.200' N	110° 46.355' W
Helispot	H-420	32° 25.880' N	110° 45.680' W
Helispot	H-433	32° 24.384' N	110° 42.381' W
Incident Base	Catalina	32° 25.624' N	110° 55.510' W
Incident Command Post	El Conquistador	32° 23.191' N	110° 57.437' W
Mobile Weather Unit	Scout Camp RAWs	32° 23.883' N	110° 43.500' W
Mobile Weather Unit	Ski Valley Nano RAWs	32° 26.843' N	110° 46.746' W
Repeater	Command 10	32° 24.798' N	110° 43.675' W
Repeater	Command 11	32° 26.500' N	110° 47.330' W
Repeater	Command 8	32° 22.320' N	110° 56.341' W
Repeater	Command 9	32° 17.535' N	110° 49.372' W
Sling Site		32° 33.887' N	110° 45.265' W
Unimproved Landing Area		32° 27.312' N	110° 55.531' W
Unimproved Landing Area		32° 25.799' N	110° 55.570' W
Unimproved Landing Area		32° 32.737' N	110° 46.133' W
Unimproved Landing Area		32° 34.212' N	110° 47.059' W
Value at Risk		32° 26.390' N	110° 47.199' W
Value at Risk		32° 20.047' N	110° 43.370' W
Value at Risk	Brookside	32° 34.938' N	110° 50.577' W
Value at Risk	Brookside Santa Catalina Nursing Home	32° 20.549' N	110° 56.141' W
Value at Risk	East Golder	32° 28.966' N	110° 53.879' W
Value at Risk	Lower Soldier HOA	32° 25.700' N	110° 44.645' W
Value at Risk	Oro Valley	32° 26.077' N	110° 58.462' W
Value at Risk	Sky Center Observatory	32° 26.498' N	110° 47.331' W
Value at Risk	Summerhaven	32° 26.340' N	110° 45.588' W
Value at Risk	Tucson Catalina Foothills	32° 20.503' N	110° 56.242' W
Value at Risk	U of A Observatory	32° 25.016' N	110° 43.955' W
Value at Risk	Willow Canyon HOA	32° 23.317' N	110° 41.917' W

SOUTHWEST AREA
INCIDENT MANAGEMENT TEAM 2

swalterscheid
6/18/2020 0432
Acres from IR
North American 1983 Datum, Lat/Long
Grid