

Air Ops

Bighorn

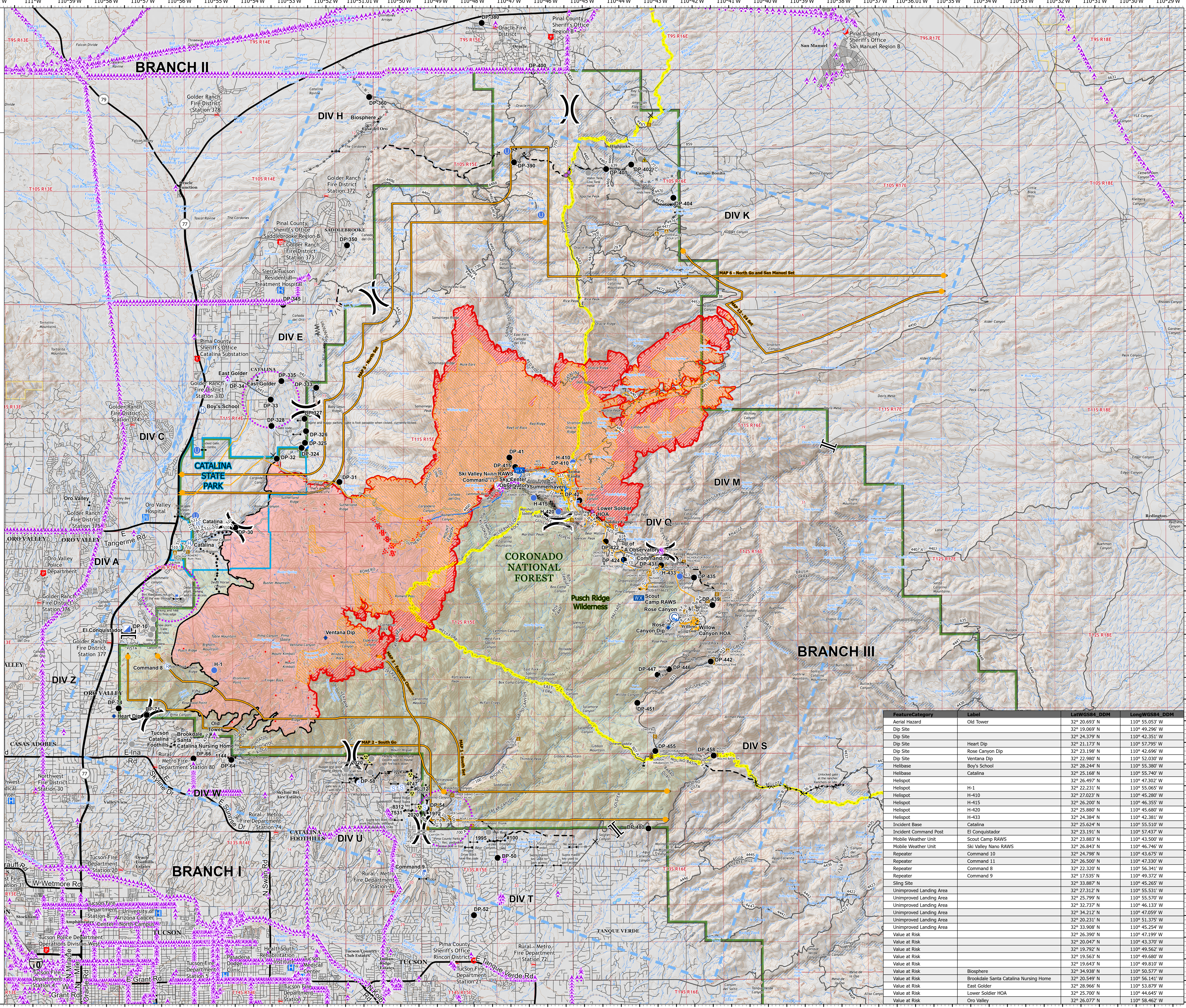
AZ-CNF-413

6/19/2020

37,058 acres at 6/18/2020 2000

Scale: 1:48,000

- IR Isolated Heat Source
- IR Intense Heat
- IR Scattered Heat
- Aerial Hazard
- Bridge
- Camp
- Closure
- Dip Site
- Drop Point
- Fence - Cut/Damaged
- Fire Station
- Gate
- Hazard
- Helibase
- Unimproved Landing Area
- Helispot
- Incident Base
- Incident Command Post
- Lookout
- Mobile Weather Unit
- Repair Point
- Repeater
- Retardant in Avoidance Area
- Safety Zone
- Sling Site
- Staging Area
- Water Development or Draft Site
- Value at Risk
- Other
- Division Break
- Branch Break
- Aerial Hazard
- Uncontrolled Fire Edge
- Contained Line
- Completed Dozer Line
- Completed Hand Line
- Road as Completed Line
- Access or Improved Road
- Line Break Completed
- Proposed Burnout
- Active Burnout
- Proposed Dozer Line
- Fire Break Planned or Incomplete
- Planned Fire Line
- Planned Secondary Line
- Aerial Ignition
- Aerial Water Drop
- Temporary Flight Restriction
- UAS Launch and Recovery Zone
- Escape Route
- Road Repair
- Management Action Point
- Hospital
- Fire Station
- Law Enforcement
- Campground
- Visitor/Information Center
- Trailhead
- Picnic Area
- Controlled access
- Highway or ramp
- Local connector
- Local or 4WD road
- Tunnel
- Ferry
- FS Road
- Trails
- CNF Trail
- Arizona Trail
- Railroad
- Airport Point
- International or Military Airport
- City or Regional Airport
- Airstrip
- Census Road
- Controlled access
- Highway or ramp
- Local connector
- Local or 4WD road
- Tunnel
- Ferry
- FS Road
- Trails
- CNF Trail
- Arizona Trail
- Railroad



Feature Category	Label	LatWGS84_DDM	LongWGS84_DDM
Aerial Hazard	Old Tower	32° 20.693'	110° 55.053'
Dip Site	Heart Dip	32° 19.069'	110° 49.296'
Dip Site	Rose Canyon Dip	32° 24.379'	110° 42.351'
Dip Site	Heart Dip	32° 21.173'	110° 57.795'
Dip Site	Rose Canyon Dip	32° 23.198'	110° 42.696'
Dip Site	Ventana Dip	32° 22.980'	110° 52.030'
Helibase	Boy's School	32° 28.244'	110° 55.380'
Helibase	Catalina	32° 25.168'	110° 55.740'
Helispot	H-1	32° 26.497'	110° 47.302'
Helispot	H-11	32° 22.231'	110° 55.065'
Helispot	H-410	32° 27.023'	110° 45.280'
Helispot	H-415	32° 26.200'	110° 46.355'
Helispot	H-420	32° 25.880'	110° 45.680'
Helispot	H-433	32° 24.384'	110° 42.381'
Incident Base	Catalina	32° 25.624'	110° 55.510'
Incident Command Post	El Conquistador	32° 23.191'	110° 57.437'
Mobile Weather Unit	Scout Camp RAWS	32° 23.883'	110° 43.500'
Mobile Weather Unit	Ski Valley Nano RAWS	32° 26.843'	110° 46.746'
Repeater	Command 10	32° 24.798'	110° 43.675'
Repeater	Command 11	32° 26.500'	110° 47.330'
Repeater	Command 8	32° 22.320'	110° 56.341'
Repeater	Command 9	32° 17.535'	110° 49.372'
Sling Site	Command 9	32° 33.887'	110° 45.265'
Unimproved Landing Area		32° 27.312'	110° 55.531'
Unimproved Landing Area		32° 25.799'	110° 55.570'
Unimproved Landing Area		32° 32.737'	110° 46.133'
Unimproved Landing Area		32° 34.212'	110° 47.059'
Unimproved Landing Area		32° 20.231'	110° 51.375'
Unimproved Landing Area		32° 33.908'	110° 45.254'
Value at Risk		32° 26.390'	110° 47.199'
Value at Risk		32° 20.047'	110° 43.370'
Value at Risk		32° 19.792'	110° 49.562'
Value at Risk		32° 19.563'	110° 49.680'
Value at Risk		32° 19.643'	110° 49.810'
Value at Risk	Biosphere	32° 34.938'	110° 50.577'
Value at Risk	Brookdale Santa Catalina Nursing Home	32° 20.549'	110° 56.141'
Value at Risk	East Golder	32° 28.966'	110° 51.879'
Value at Risk	Lower Soldier HOA	32° 25.700'	110° 44.645'
Value at Risk	Oro Valley	32° 26.077'	110° 58.462'



swalterscheid
6/19/2020 0434
Acres from IR
North American 1983 Datum, Lat/Long
Grid