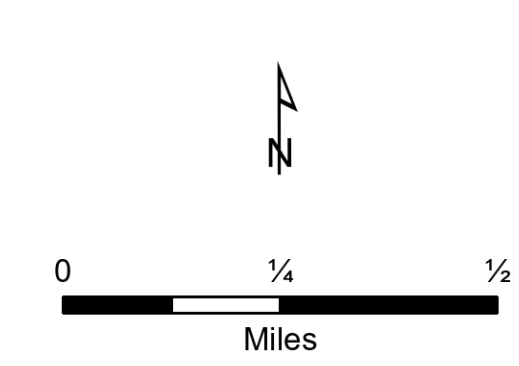


Division Breakout Maps

Bighorn
AZ-CNF-413
0619 Day

37,058 acres as of 6/18/2020 2000

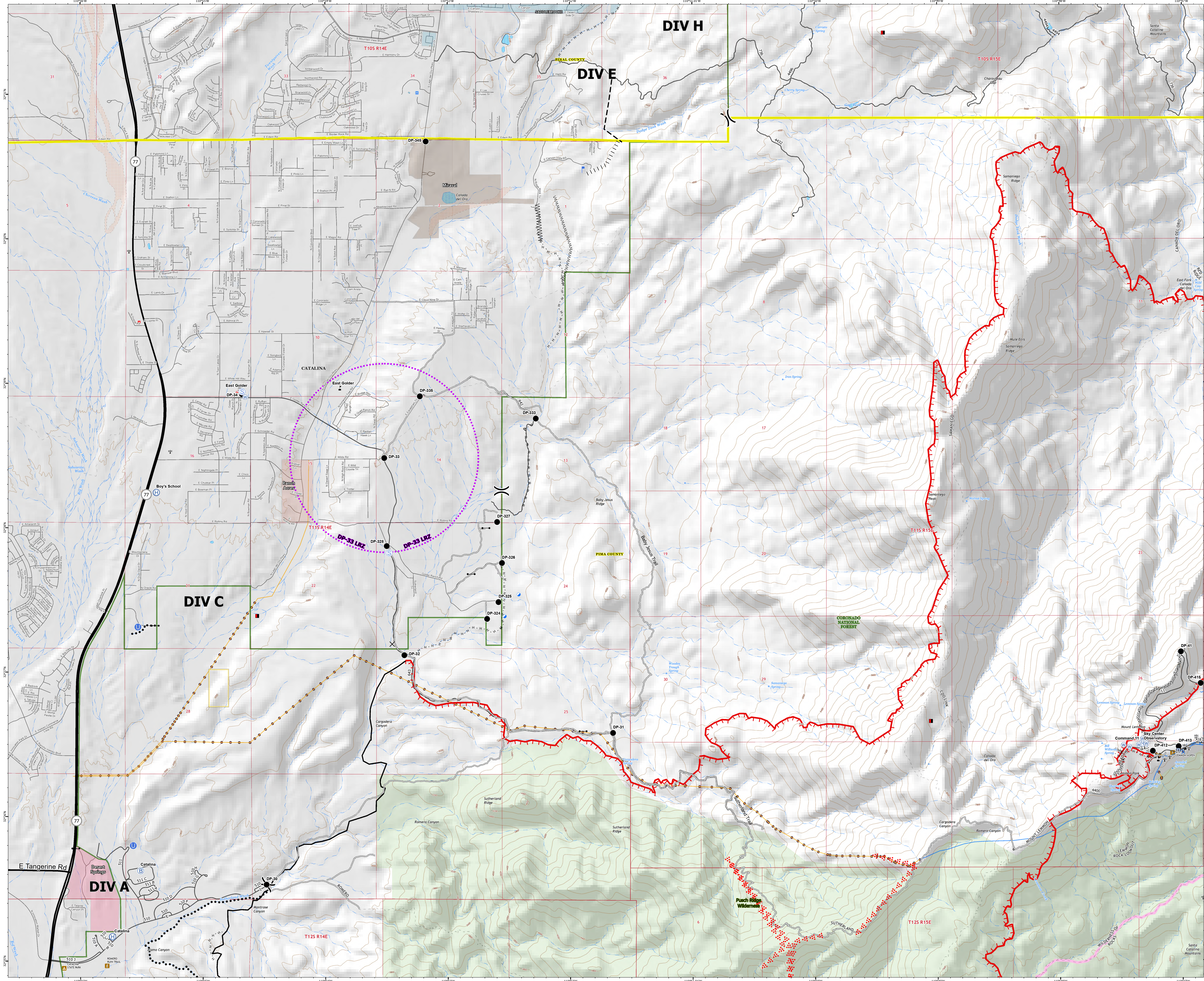
Div C/E



- ✕ Closure
- Drop Point
- Gate
- Helibase
- Unimproved Landing Area
- Incident Base
- Lookout
- Repeater
- Retardant in Avoidance Area
- Staging Area
- Water Source
- Water Development or Draft Site
- Value at Risk
- Division Break
- Mines
- Uncontrolled Fire Edge
- Contained Line
- Completed Dozer Line
- Completed Hand Line
- Road as Completed Line
- Access or Improved Road
- Line Break Completed
- Proposed Burnout
- Fire Break Planned or Incomplete
- Planned Fire Line
- Planned Secondary Line
- Aerial Ignition
- UAS Launch and Recovery Zone
- Escape Route
- Road Repair
- Wilderness
- Hospital
- Fire Station
- Law Enforcement
- Communication Towers
- Trailhead
- Campground
- Coronado National Forest
- Bureau of Land Management
- County or Equivalent
- Highway or ramp
- Local connector
- Local or 4WD road
- FS Road
- Trails
- Cliff Trail
- Arizona Trail

Utility Infrastructure

- Power Lines
- Overhead power
- Underground power
- DivLabelingArCs
- BranchLabelingArCs

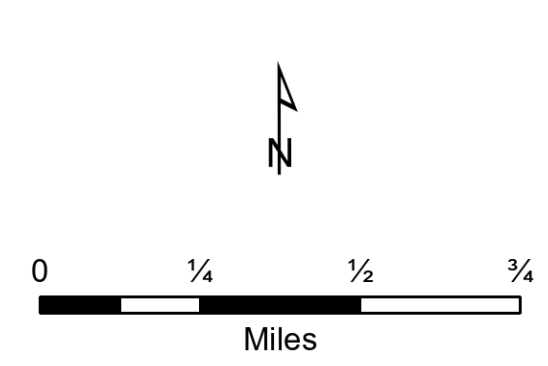


**Division
Breakout Maps**

Bighorn
AZ-CNF-413
0619 Day

37,058 acres at 6/18/2020 2000

Div H



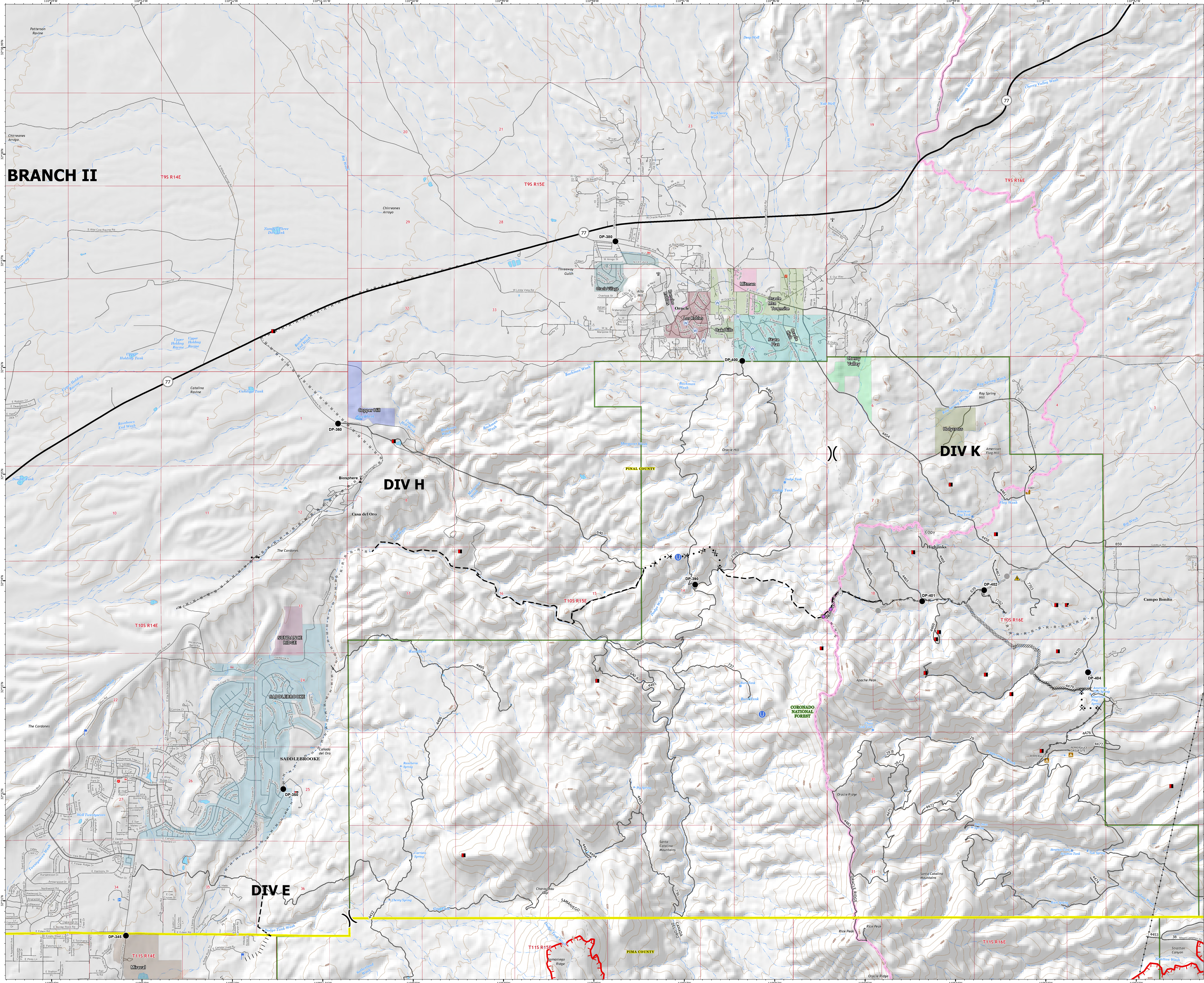
- ✕ Closure
- Drop Point
- Fence - Cut/Damaged
- Gate
- Unimproved Landing Area
- Lockout
- Repair Point
- ▲ Safety Zone
- ▲ Sling Site
- Staging Area
- Water Source
- Value at Risk
- Other
- Division Break
- Mines
- Uncontrolled Fire Edge
- Completed Dozer Line
- Completed Hand Line
- Road as Completed Line
- Access or Improved Road
- Line Break Completed
- Proposed Burnout
- Proposed Dozer Line
- Fire Break Planned or Incomplete
- Planned Fire Line
- Hospital
- Fire Station
- Law Enforcement
- Transmission Lines
- Communication Towers
- Trailhead
- Campground
- Coronado National Forest
- County or Equivalent
- Local connector
- Local or 4WD road
- FS Road
- Trails
- CNF Trail
- Arizona Trail
- DivLabelingArcs
- BranchLabelingArcs

BRANCH II

DIV H

DIV K

DIV E

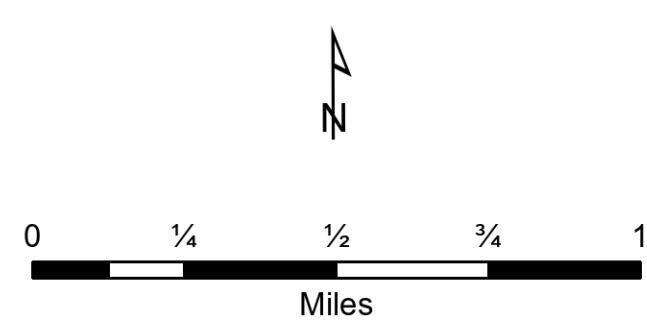


Division Breakout Maps

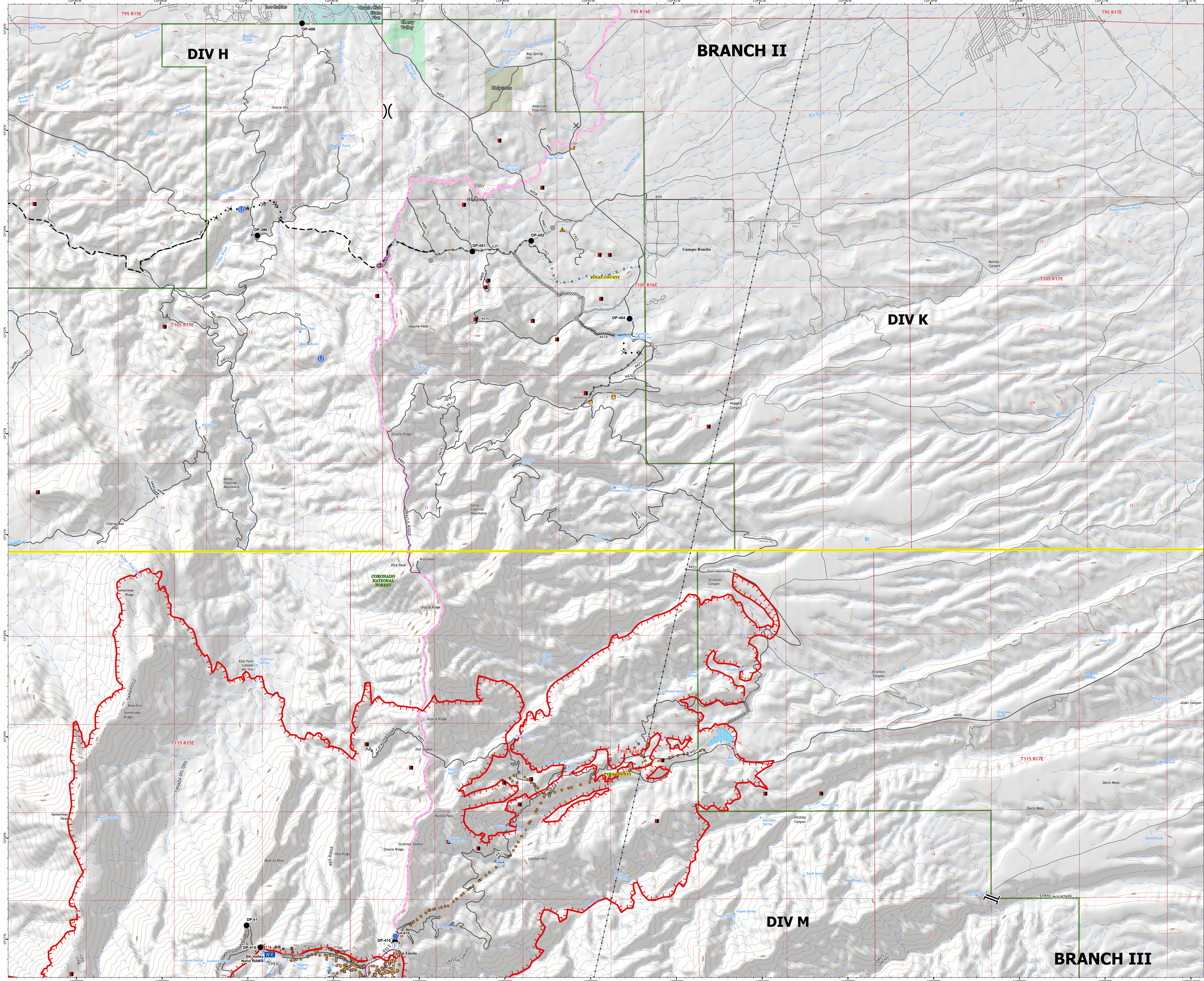
Bighorn
AZ-CNF-413
0619 Day

37,058 acres at 6/18/2020 2000

Div K



- ✕ Closure
 - Drop Point
 - Fence - Cut/Damaged
 - Fire Station
 - Unimproved Landing Area
 - Helispot
 - Mobile Weather Unit
 - Repair Point
 - ▲ Safety Zone
 - ▲ Sling Site
 - Staging Area
 - Water Source
 - Other
 - ✕ Division Break
 - ✕ Branch Break
 - Mines
 - Uncontrolled Fire Edge
 - Completed Dozer Line
 - Completed Hand Line
 - Road as Completed Line
 - Access or Improved Road
 - Proposed Burnout
 - Proposed Dozer Line
 - Planned Fire Line
 - Fire Station
 - Transmission Lines
 - Communication Towers
 - Trailhead
 - Campground
 - Coronado National Forest
 - County or Equivalent
 - Local or 4WD road
 - FS Road
 - Trails
 - CNF Trail
 - Arizona Trail
- Utility Infrastructure**
- Power Lines
 - Overhead power
 - Underground power
 - DivLabelingArcs
 - BranchLabelingArcs

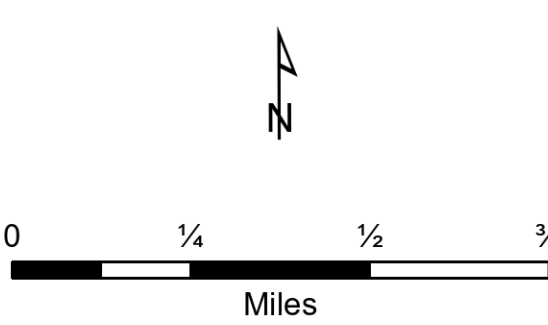


Division Breakout Maps

Bighorn
AZ-CNF-413
0619 Day

37,058 acres at 6/18/2020 2000

Div M



- Bridge
- Camp
- Dip Site
- Drop Site
- Fire Station
- Gate
- Helispot
- Lookout
- Mobile Weather Unit
- Repair Point
- Repeater
- Water Source
- Water Development or Draft Site
- Value at Risk
- Division Break
- Branch Break
- Mines
- Uncontrolled Fire Edge
- Completed Dozer Line
- Completed Hand Line
- Road as Completed Line
- Access or Improved Road
- Proposed Burnout
- Active Burnout
- Proposed Dozer Line
- Planned Fire Line
- Road Repair
- Wilderness
- Fire Station
- Transmission Lines
- Communication Towers
- Visitor/Information Center
- Trailhead
- Picnic Area
- Campground
- Coronado National Forest
- County or Equivalent
- Local or 4WD road
- FS Road
- Trails
- CNF Trail
- Arizona Trail
- Utility Infrastructure
- Power Lines
- Overhead power
- Underground power
- DivLabelingArcs
- BranchLabelingArcs

BRANCH II

DIV K

BRANCH III

DIV M

DIV Q

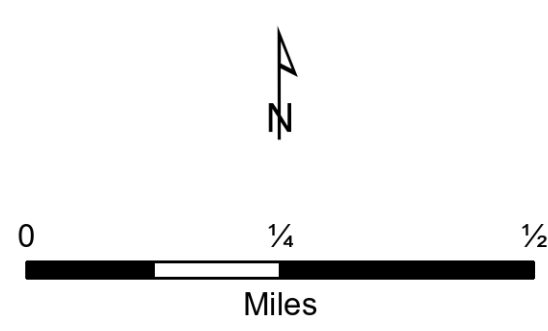
DIV S

Division Breakout Maps

Bighorn
AZ-CNF-413
0619 Day

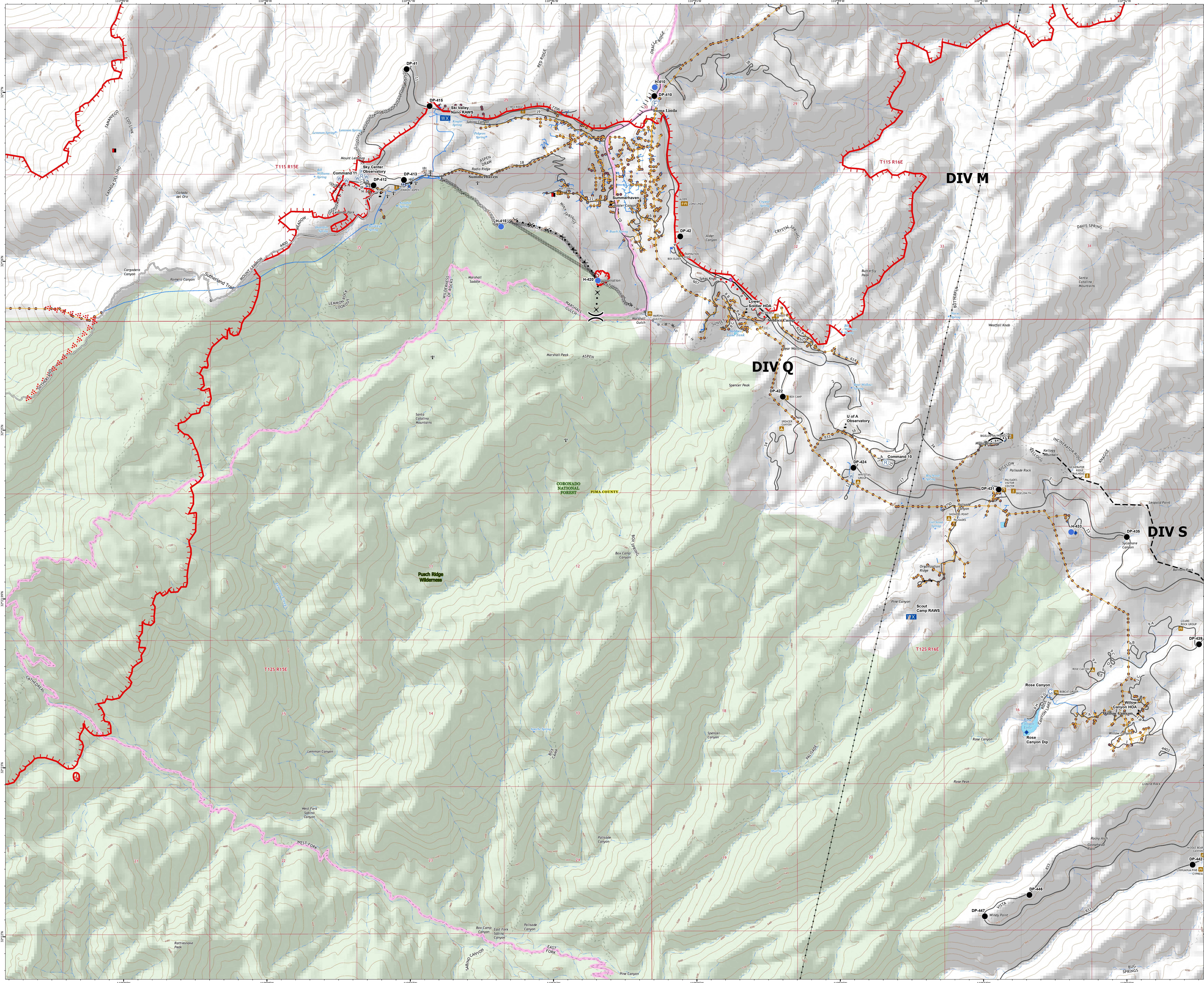
37,058 acres at 6/18/2020 2000

DIV Q



- Bridge
- Camp
- Dip Site
- Drop Point
- Fire Station
- Gate
- Helispot
- Lookout
- Mobile Weather Unit
- Repair Point
- Repeater
- Water Source
- Water Development or Draft Site
- Value at Risk
- Division Break
- Mines
- Uncontrolled Fire Edge
- Completed Dozer Line
- Completed Hand Line
- Road as Completed Line
- Access or Improved Road
- Proposed Burnout
- Active Burnout
- Proposed Dozer Line
- Planned Fire Line
- Aerial Ignition
- Road Repair
- Wilderness
- Fire Station
- Transmission Lines
- Communication_Towers
- Visitor/Information Center
- Trailhead
- Picnic Area
- Campground
- Coronado National Forest
- County or Equivalent
- FS Road
- Trails
- CNF Trail
- Arizona Trail

- Utility Infrastructure**
- Power Lines
 - Overhead power
 - Underground power
 - DIVcableing/ArCs
 - Branching/Labeling/ArCs

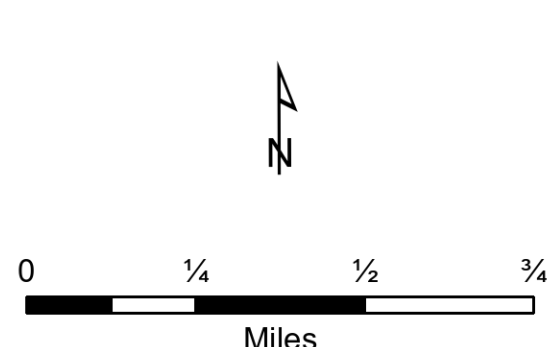


Division Breakout Maps

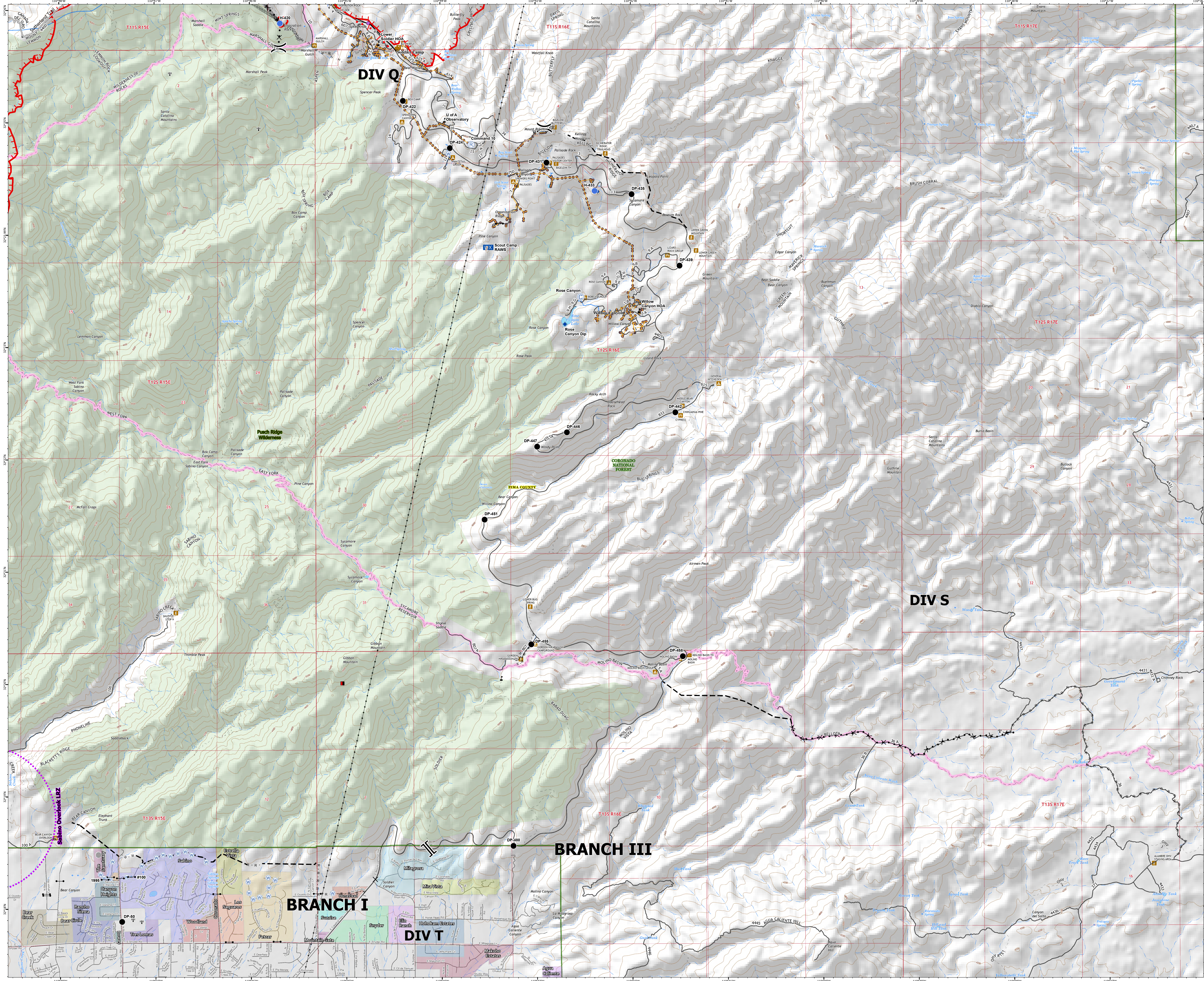
Bighorn
AZ-CNF-413
0619 Day

37,058 acres at 6/18/2020 2000

DIV S

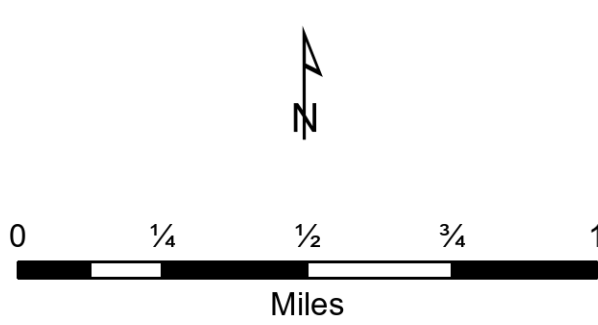


- Bridge
 - Camp
 - Closure
 - Dip Site
 - Drip Point
 - Gate
 - Helispot
 - Lookout
 - Mobile Weather Unit
 - Repair Point
 - Repeater
 - Water Source
 - Value at Risk
 - Other
 - Division Break
 - Branch Break
 - Mines
 - Uncontrolled Fire Edge
 - Completed Dozer Line
 - Completed Hand Line
 - Road as Completed Line
 - Access or Improved Road
 - Active Burnout
 - Proposed Dozer Line
 - Planned Fire Line
 - UAS Launch and Recovery Zone
 - Wilderness
 - Transmission Lines
 - Communication Towers
 - Visitor/Information Center
 - Trailhead
 - Picnic Area
 - Campground
 - Coronado National Forest
 - County or Equivalent
 - Local or 4WD road
 - FS Road
 - Trails
 - CNF Trail
 - Arizona Trail
- Utility Infrastructure**
- Power Lines
 - Overhead power
 - Underground power
 - DivLabelingArcs
 - BranchLabelingArcs



Division Breakout Maps

Bighorn
AZ-CNF-413
0619 Day
37,058 acres at 6/18/2020 2000
W/U/T



- Aerial Hazard
- Closure
- Dip Site
- Drop Point
- Gate
- Hazard
- Helispot
- Incident Command Post
- Lookout
- Mobile Weather Unit
- Repeater
- Staging Area
- Water Source
- Value at Risk
- Other
- Division Break
- Branch Break
- Mines
- Uncontrolled Fire Edge
- Contained Line
- Completed Hand Line
- Road as Completed Line
- Access or Improved Road
- Planned Fire Line
- Planned Secondary Line
- Aerial Water Drop
- US Launch and Recovery Zone
- Wilderness
- Hospital
- Fire Station
- Law Enforcement
- Transmission Lines
- Communication Towers
- Visitor/Information Center
- Trailhead
- Picnic Area
- Coronado National Forest
- County or Equivalent
- Highway or ramp
- Local or HWD road
- FS Road
- Trails
- CNF Trail
- Arizona Trail

- Utility Infrastructure
- Overhead power
 - Underground power
 - DivLabelingArcs
 - BranchLabelingArcs

