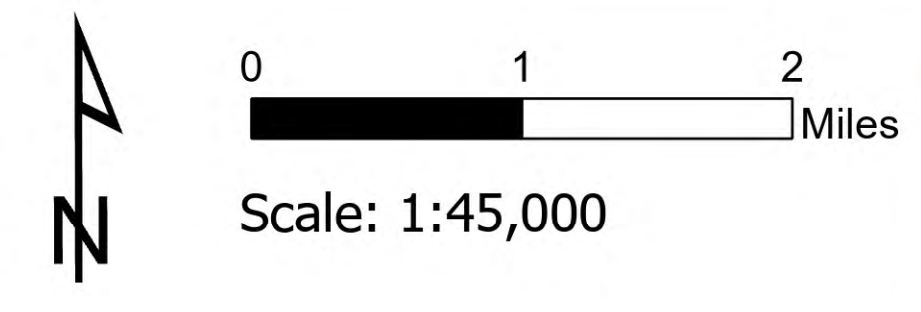


Operations

Bighorn
AZ-CNF-413
6/19/2020 Day

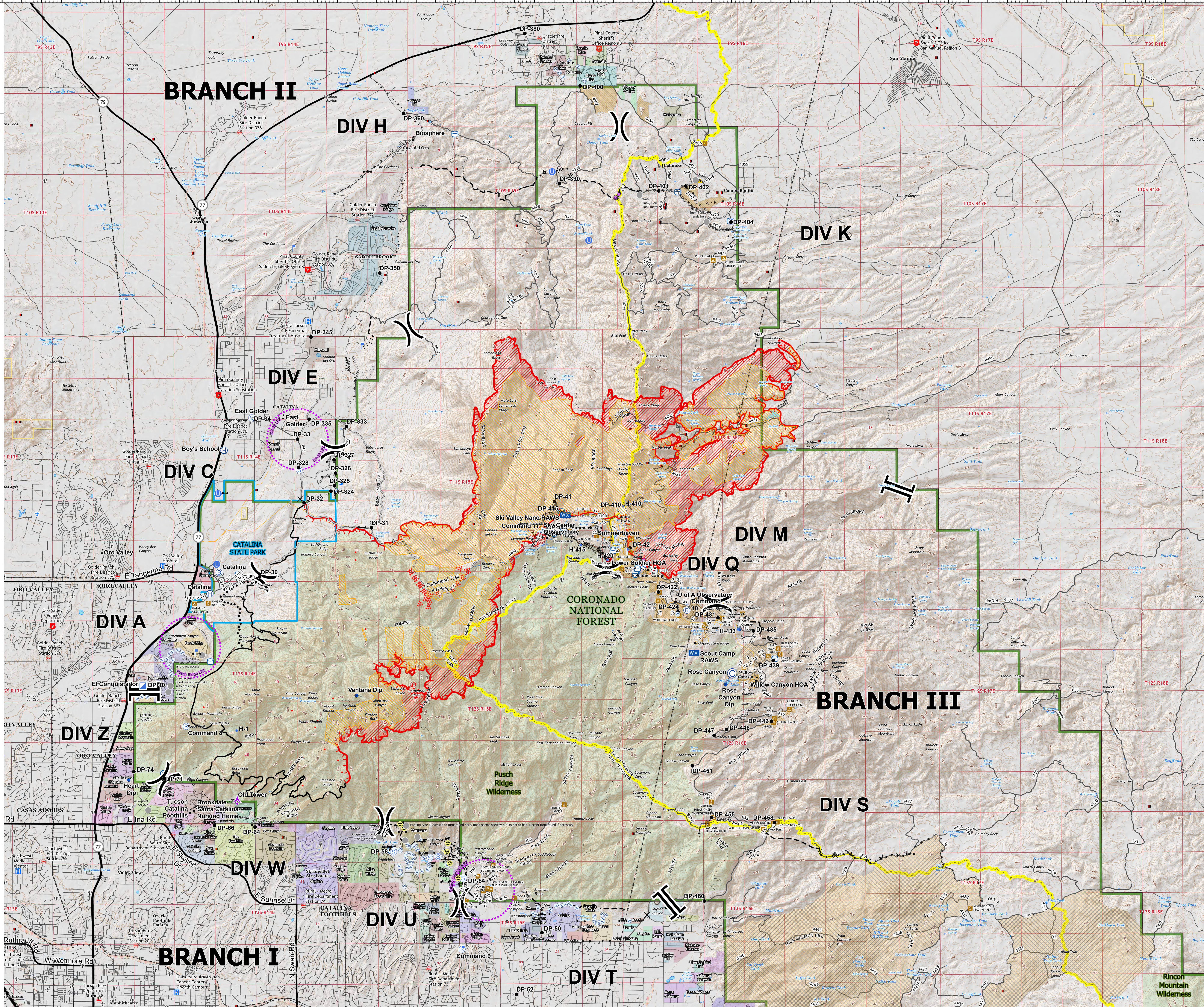
37,058 acres at 6/18/2020 2000



- IR Isolated Heat Source
- IR Intense Heat
- IR Scattered Heat
- Aerial Hazard
- Bridge
- Camp
- Closure
- Drop Site
- Drop Point
- Fence - Cut/Damaged
- Fire Station
- Gate
- Hazard
- Helibase
- Unimproved Landing Area
- Helispot
- Incident Base
- Incident Command Post
- Lookout
- Mobile Weather Unit
- Repair Point
- Repeater
- Retardant in Avoidance Area
- Safety Zone
- Sling Site
- Staging Area
- Water Source
- Water Development or Draft Site
- Value at Risk
- Other
- Division Break
- Branch Break
- Uncontrolled Fire Edge
- Contained Line
- Completed Dozer Line
- Completed Hand Line
- Road as Completed Line
- Access or Improved Road
- Line Break Completed
- Proposed Burnout
- Active Burnout
- Proposed Dozer Line
- Fire Break Planned or Incomplete
- Planned Fire Line
- Planned Secondary Line
- Aerial Ignition
- Aerial Water Drop
- UAS Launch and Recovery Zone
- Escape Route
- Road Repair
- Catalina State Park
- Bureau of Land Management
- Wilderness
- Mines
- Transmission Lines
- Communication Towers
- Overhead power
- Underground power
- Rx and Pile Burns
- Mechanical Treatment
- Transportation
- Trails
- Railroad
- Highway Label
- Airport International or Military Airport
- City or Regional Airport
- Alleyway
- Census Road
- Controlled access
- Highway or ramp
- Local connector
- Local or 4WD road
- Tunnel
- Ferry
- FS Road
- Trails
- CNF Trail
- Arizona Trail
- Railroad
- Highway Label
- CNF Trail



kgalz
6/19/2020 0308
Acres from IR
North American 1983 Datum. LatLong
Grid



111°4.5'W 111°3.5'W 111°2.5'W 111°1.5'W 111°0.5'W 110°59.5'W 110°58.5'W 110°57.5'W 110°56.5'W 110°55.5'W 110°54.5'W 110°53.5'W 110°52.5'W 110°51.5'W 110°50.5'W 110°49.5'W 110°48.5'W 110°47.5'W 110°46.5'W 110°45.5'W 110°44.5'W 110°43.5'W 110°42.5'W 110°41.5'W 110°40.5'W 110°39.5'W 110°38.5'W 110°37.5'W 110°36.5'W 110°35.5'W 110°34.5'W 110°33.5'W 110°32.5'W 110°31.5'W 110°30.5'W 110°29.5'W 110°28.5'W 110°27.5'W 110°26.5'W 110°25.5'W 110°24.5'W 110°23.5'W 110°22.5'W 110°21.5'W 110°20.5'W 110°19.5'W 110°18.5'W 110°17.5'W 110°16.5'W 110°15.5'W 110°14.5'W 110°13.5'W 110°12.5'W 110°11.5'W 110°10.5'W 110°9.5'W 110°8.5'W 110°7.5'W 110°6.5'W 110°5.5'W 110°4.5'W 110°3.5'W 110°2.5'W 110°1.5'W 110°0.5'W