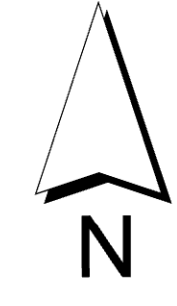


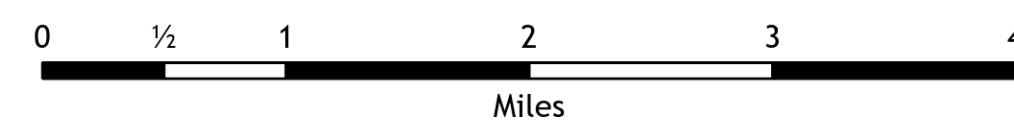
# Transportation Map

Bighorn Fire  
AZ-CNF-000413  
6/19/2020

37,058 acres at 6/18/2020 2000



- Wildfire Daily Fire Perimeter
- Bridge
- Camp
- Closure
- Dip Site
- Drop Point
- Fence - Cut/Damaged
- Fire Station
- Gate
- Hazard
- Helibase
- Unimproved Landing Area
- Helispot
- Incident Base
- Incident Command Post
- Lookout
- Mobile Weather Unit
- Repair Point
- Repeater
- Safety Zone
- Sling Site
- Staging Area
- Water Source
- Water Development or Draft Site
- Value at Risk
- Division Break
- Branch Break
- Primary Rendezvous
- Secondary Rendezvous
- Completed Dozer Line
- Access or Improved Road
- Line Break Completed
- Active Burnout
- Proposed Dozer Line
- Aerial Water Drop
- Escape Route
- Road Repair
- Catalina State Park
- Coronado National Forest
- USFS Wilderness
- Freeway
- Highway
- Major Road
- Road
- Unimproved Road
- Trail
- Forest Road 38
- Arizona Trail
- Railroad

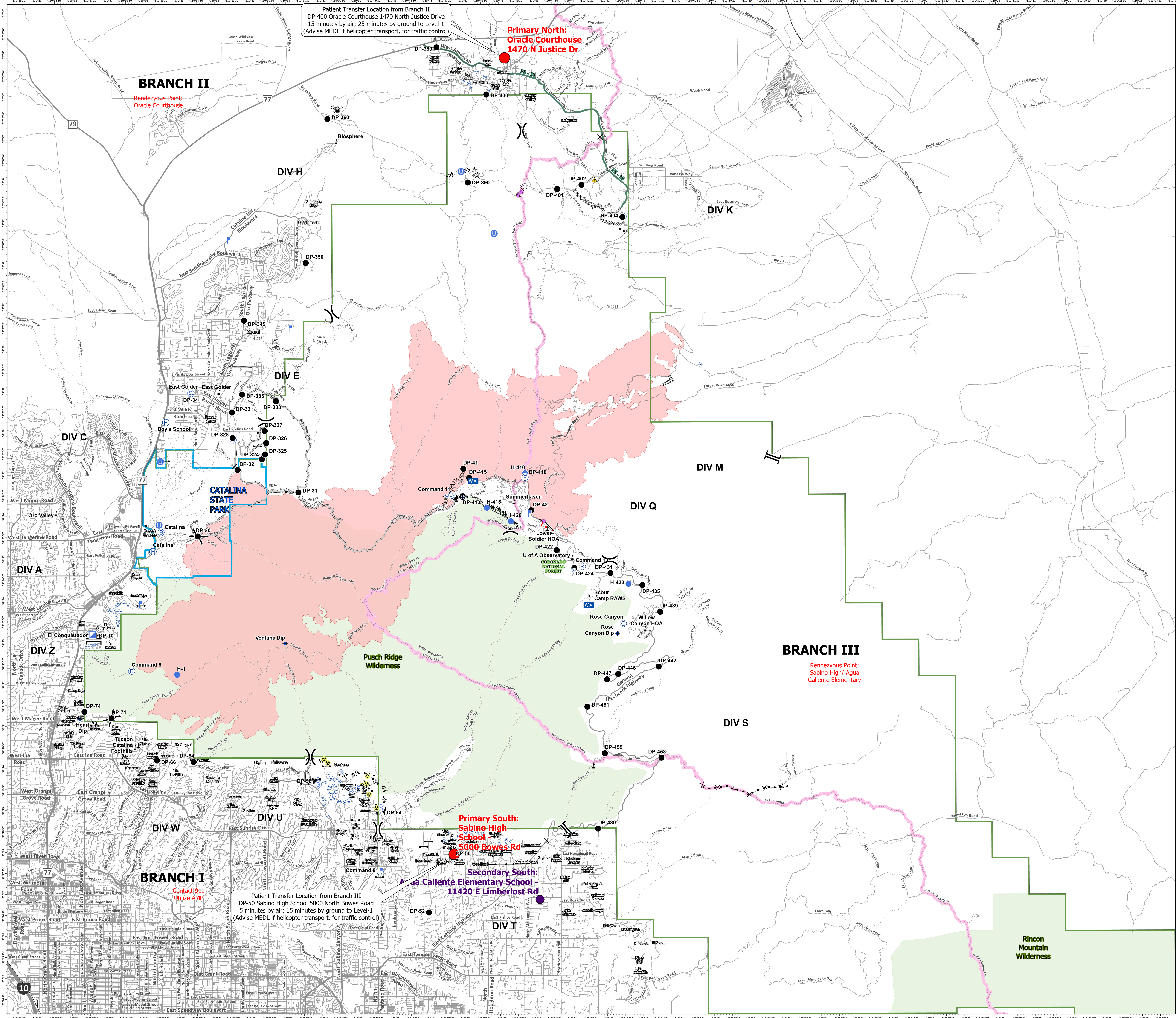


Scale: 1:50,000



kgaz  
6/19/2020 0646

North American 1983 Datum. Lat/Long Grid



Patient Transfer Location from Branch II  
DP-400 Oracle Courthouse 1470 North Justice Drive  
15 minutes by air; 25 minutes by ground to Level-1  
(Advise MEDL if helicopter transport, for traffic control)

Primary North:  
Oracle Courthouse  
1470 N Justice Dr

Rendezvous Point:  
Oracle Courthouse

Rendezvous Point:  
Sabino High/ Agua  
Caliente Elementary

Primary South:  
Sabino High  
School  
5000 Bowes Rd

Secondary South:  
Agua Caliente Elementary School  
11420 E Limberlost Rd

Patient Transfer Location from Branch III  
DP-50 Sabino High School 5000 North Bowes Road  
5 minutes by air; 15 minutes by ground to Level-1  
(Advise MEDL if helicopter transport, for traffic control)

Contact 911  
Utilize AMP

Rincon  
Mountain  
Wilderness