

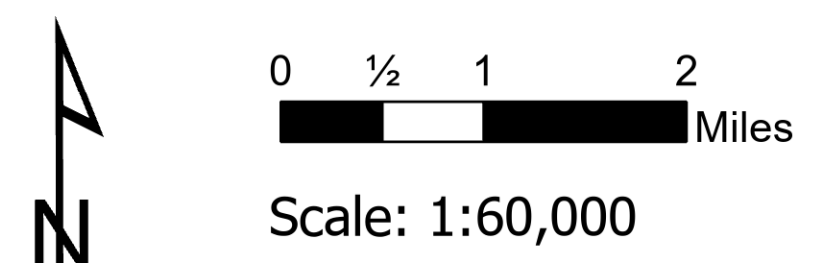
Air Ops

Bighorn

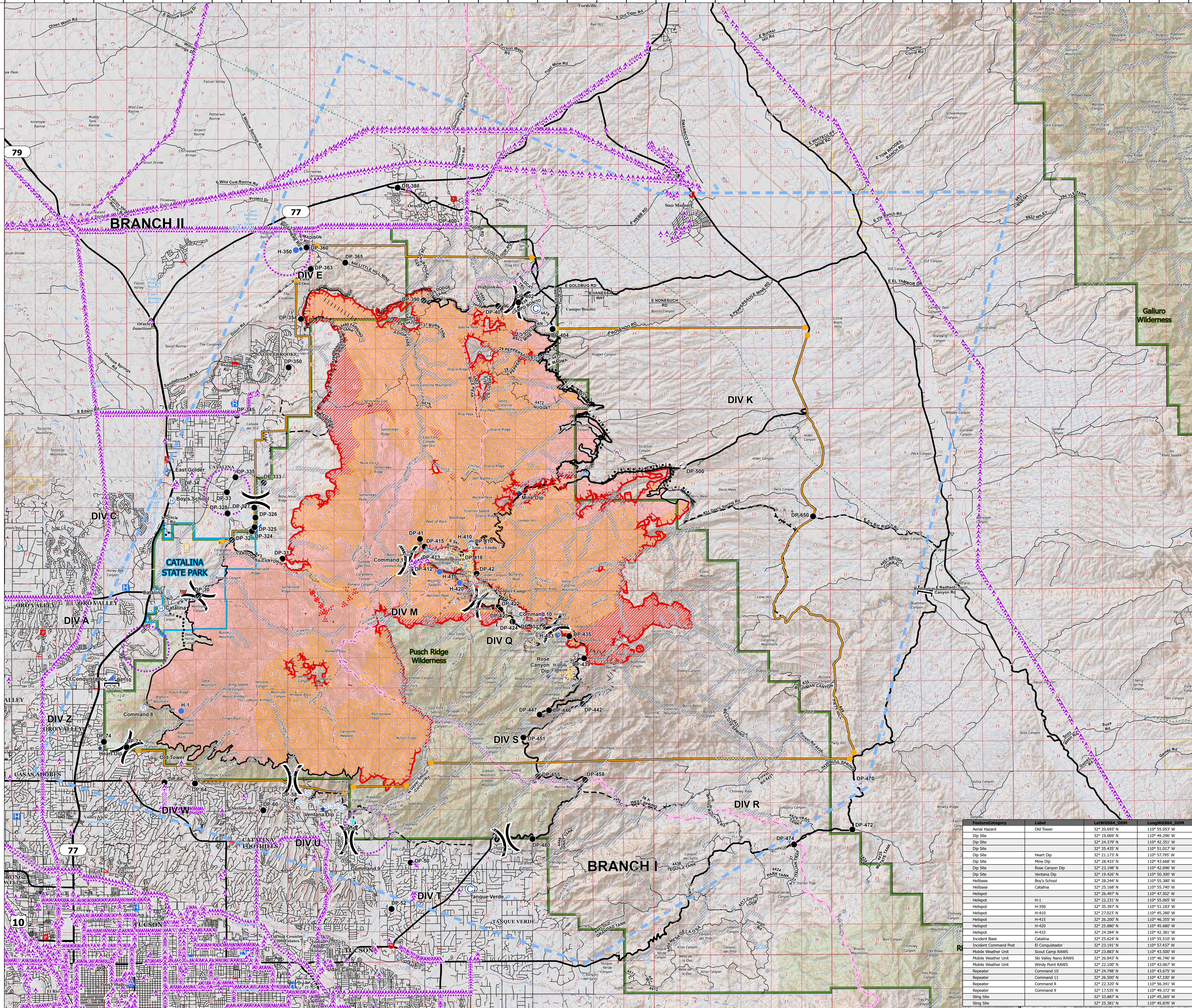
AZ-CNF-413

6/26/2020

88,046 acres at 6/25/20 2124



- IR Isolated Heat Source
 - IR Intense Heat
 - IR Scattered Heat
 - ▲ Aerial Hazard
 - Camp
 - Dip Site
 - Drop Point
 - Fire Station
 - Helibase
 - Helispot
 - Hot Spot
 - Incident Base
 - Incident Command Post
 - Internet Access
 - Repeater
 - Retardant in Avoidance Area
 - Retardant/Mud Pit
 - Sling Site
 - Spot Fire
 - Staging Area
 - Restricted Water Source
 - Water Development or Draft Site
 -) Division Break
 - | Branch Break
 - ▲ Aerial Hazard
 - ▲ Uncontrolled Fire Edge
 - Contained Line
 - - - Completed Dozer Line
 - - - Completed Hand Line
 - - - Road as Completed Line
 - - - Line Break Completed
 - - - Proposed Burnout
 - - - Active Burnout
 - - - Completed Burnout
 - - - Proposed Dozer Line
 - - - Fire Break Planned or Incomplete
 - - - Planned Fire Line
 - - - Planned Secondary Line
 - Aerial Ignition
 - Temporary Flight Restriction
 - UAS Launch and Recovery Zone
 - Management Action Point
 - Hospital
 - Fire Station
 - Law Enforcement
 - Pipeline
- Transportation**
- Road
 - Controlled access
 - Highway or ramp
 - Local connector
 - Local or 4WD road
 - Street
 - Tunnel
 - Ferry
 - Trail
 - Railroad
- Land Management**
- Catalina State Park
 - Coronado National Forest
 - Bureau of Land Management
 - National Park Service
 - Retardant Avoidance Area
 - Wildfire Daily Fire Perimeter
 - Wilderness
- TriCo Electric Equipment**
- Overhead
 - Underground
- Transportation**
- Arizona Trail



Feature/Category	Label	Latitude (DDM)	Longitude (DDM)
Aerial Hazard	Old Tower	32° 20.693' N	110° 55.053' W
Dip Site		32° 19.069' N	110° 49.296' W
Dip Site		32° 24.379' N	110° 42.351' W
Dip Site		32° 35.435' N	110° 51.017' W
Dip Site	Heart Dip	32° 21.175' N	110° 57.795' W
Dip Site	Mine Dip	32° 28.433' N	110° 43.668' W
Dip Site	Rose Canyon Dip	32° 23.198' N	110° 42.696' W
Dip Site	Ventana Dip	32° 19.426' N	110° 50.300' W
Helibase	Boy's School	32° 28.244' N	110° 55.380' W
Helibase	Catalina	32° 25.168' N	110° 55.740' W
Helispot	H-1	32° 26.497' N	110° 47.300' W
Helispot	H-350	32° 22.231' N	110° 45.868' W
Helispot	H-410	32° 35.397' N	110° 51.183' W
Helispot	H-410	32° 27.023' N	110° 45.280' W
Helispot	H-415	32° 26.200' N	110° 46.355' W
Helispot	H-420	32° 25.880' N	110° 45.680' W
Helispot	H-433	32° 24.384' N	110° 42.381' W
Helispot	Command 11	32° 26.500' N	110° 47.230' W
Incident Base	Catalina	32° 25.624' N	110° 45.510' W
Incident Command Post	El Conquistador	32° 23.191' N	110° 52.437' W
Mobile Weather Unit	Scout Camp RAWS	32° 23.883' N	110° 43.500' W
Mobile Weather Unit	Ski Valley Nano RAWS	32° 26.843' N	110° 46.746' W
Mobile Weather Unit	Windy Point RAWS	32° 22.100' N	110° 43.067' W
Repeater	Command 10	32° 24.798' N	110° 43.675' W
Repeater	Command 11	32° 26.500' N	110° 47.230' W
Repeater	Command 8	32° 22.320' N	110° 56.341' W
Repeater	Command 9	32° 17.535' N	110° 49.372' W
Sling Site		32° 33.887' N	110° 45.265' W
Sling Site		32° 25.381' N	110° 45.876' W



teichner
6/26/2020 0405
Acres from IR
North American 1983 Datum, Lat/Long
Grid