

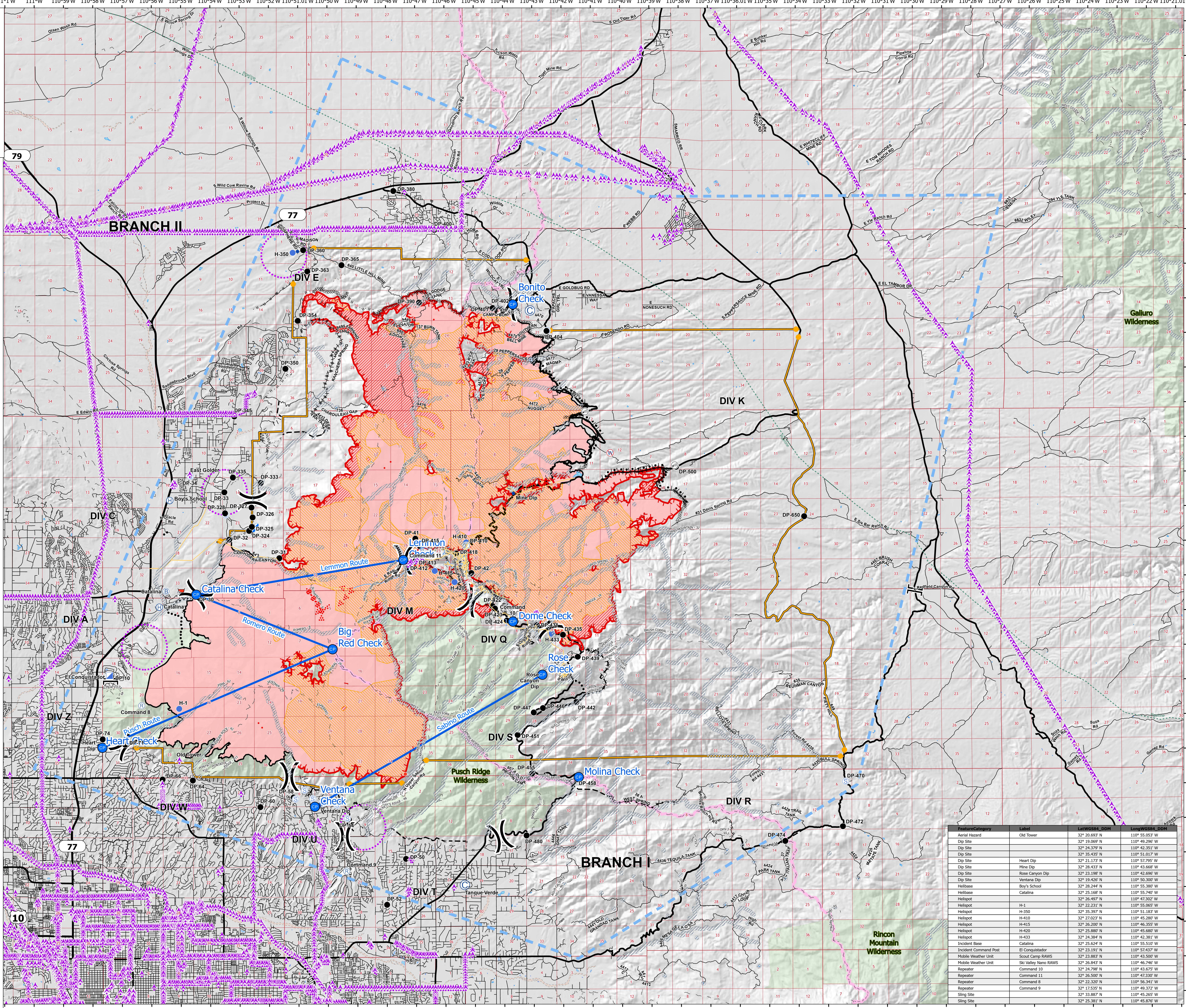
Pilot Route Map

Bighorn
AZ-CNF-413
6/25/2020

81,702 acres at 6/24/20 2046

0 1/2 1 2 Miles
Scale: 1:60,000

- IR Isolated Heat Source
- ▨ IR Intense Heat
- ▨ IR Scattered Heat
- ▲ Aerial Hazard
- Camp
- ◆ Dip Site
- Drop Point
- Fire Station
- Helibase
- Helispot
- Hot Spot
- Incident Base
- Incident Command Post
- Internet Access
- Repeater
- Retardant in Avoidance Area
- Retardant/Mud Pit
- Sling Site
- Spot Fire
- Staging Area
- Restricted Water Source
- Water Development or Draft Site
- ⌋ Division Break
- ⌋ Branch Break
- ⌋ Aerial Hazard
- ⌋ Uncontrolled Fire Edge
- Contained Line
- ⊘ Completed Dozer Line
- ⊘ Completed Hand Line
- ⊘ Road as Completed Line
- ⊘ Line Break Completed
- ⊘ Proposed Burnout
- ⊘ Active Burnout
- ⊘ Completed Burnout
- ⊘ Proposed Dozer Line
- ⊘ Fire Break Planned or Incomplete
- ⊘ Planned Fire Line
- ⊘ Planned Secondary Line
- ⊘ Aerial Ignition
- ⊘ Temporary Flight Restriction
- ⊘ UAS Launch and Recovery Zone
- ⊘ Management Action Point
- ⊘ Pipeline
- Transportation
- Road
- Controlled access
- Highway or ramp
- Local connector
- Local or 4WD road
- Street
- Tunnel
- Ferry
- Trail
- Rail/Road
- ▨ Retardant Avoidance Area
- ▨ Wildfire Daily Fire Perimeter
- ▨ Wilderness
- ▨ TriCo Electric Equipment
- Overhead
- Underground
- Transportation
- Arizona Trail
- PilotRoute
- PilotCheckPoints



FeatureCategory	Label	LatWGS84_DDM	LongWGS84_DDM
Aerial Hazard	Old Tower	32° 20.683' N	110° 55.053' W
Dip Site		32° 19.066' N	110° 49.286' W
Dip Site		32° 24.379' N	110° 42.351' W
Dip Site		32° 35.435' N	110° 51.017' W
Dip Site		32° 21.173' N	110° 57.795' W
Dip Site	Heart Dip	32° 38.433' N	110° 43.668' W
Dip Site	Mine Dip	32° 23.188' N	110° 42.068' W
Dip Site	Rose Canyon Dip	32° 18.426' N	110° 50.300' W
Dip Site	Ventana Dip	32° 28.244' N	110° 55.380' W
Helibase	Boy's School	32° 25.168' N	110° 55.740' W
Helibase	Catalina	32° 26.497' N	110° 47.302' W
Helispot	H-1	32° 22.231' N	110° 55.065' W
Helispot	H-350	32° 35.307' N	110° 51.883' W
Helispot	H-410	32° 27.023' N	110° 45.287' W
Helispot	H-415	32° 26.200' N	110° 46.355' W
Helispot	H-420	32° 25.880' N	110° 45.680' W
Helispot	H-433	32° 24.384' N	110° 42.381' W
Incident Base	Catalina	32° 25.624' N	110° 55.510' W
Incident Command Post	El Conquistador	32° 23.161' N	110° 49.372' W
Mobile Weather Unit	Scout Camp RAWS	32° 23.883' N	110° 43.500' W
Mobile Weather Unit	Ski Valley Nano RAWS	32° 26.843' N	110° 46.740' W
Repeater	Command 10	32° 24.798' N	110° 43.675' W
Repeater	Command 11	32° 26.500' N	110° 47.330' W
Repeater	Command 8	32° 22.320' N	110° 56.341' W
Repeater	Command 9	32° 17.535' N	110° 49.372' W
Sling Site		32° 33.887' N	110° 45.265' W
Sling Site		32° 25.381' N	110° 45.876' W



teichner
6/25/2020 1425
Acres from IR
North American 1983 Datum, Lat/Long
Grid