

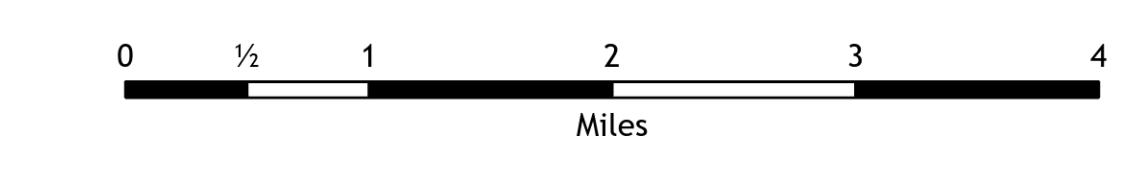
Transportation Map

Bighorn Fire
AZ-CNF-000413
6/26/2020

88,046 acres at 6/25/20 2124



- Wildfire Daily Fire Perimeter
- Camp
- Dip Site
- Drop Point
- Gate
- Helibase
- Unimproved Landing Area
- Helispot
- Hot Spot
- Incident Base
- Incident Command Post
- Lookout
- Mobile Weather Unit
- Repeater
- Sling Site
- Spot Fire
- Staging Area
- Restricted Water Source
- Value at Risk
- Division Break
- Branch Break
- Primary Rendezvous
- Secondary Rendezvous
- Catalina State Park
- Federal
- Coronado National Forest
- Wilderness
- Event Line Complex Symbology
- Uncontrolled Fire Edge
- Contained Line
- Completed Dozer Line
- Completed Hand Line
- Road as Completed Line
- Access or Improved Road
- Line Break Completed
- Proposed Burnout
- Completed Burnout
- Proposed Dozer Line
- Fire Break Planned or Incomplete
- Planned Fire Line
- Planned Secondary Line
- Temporary Flight Restriction
- UAS Launch and Recovery Zone
- Road Repair
- Management Action Point
- Other
- Transportation
- Controlled access
- Highway or ramp
- Local connector
- Local or 4WD road
- Street
- Trail
- Arizona Trail
- RailRoad

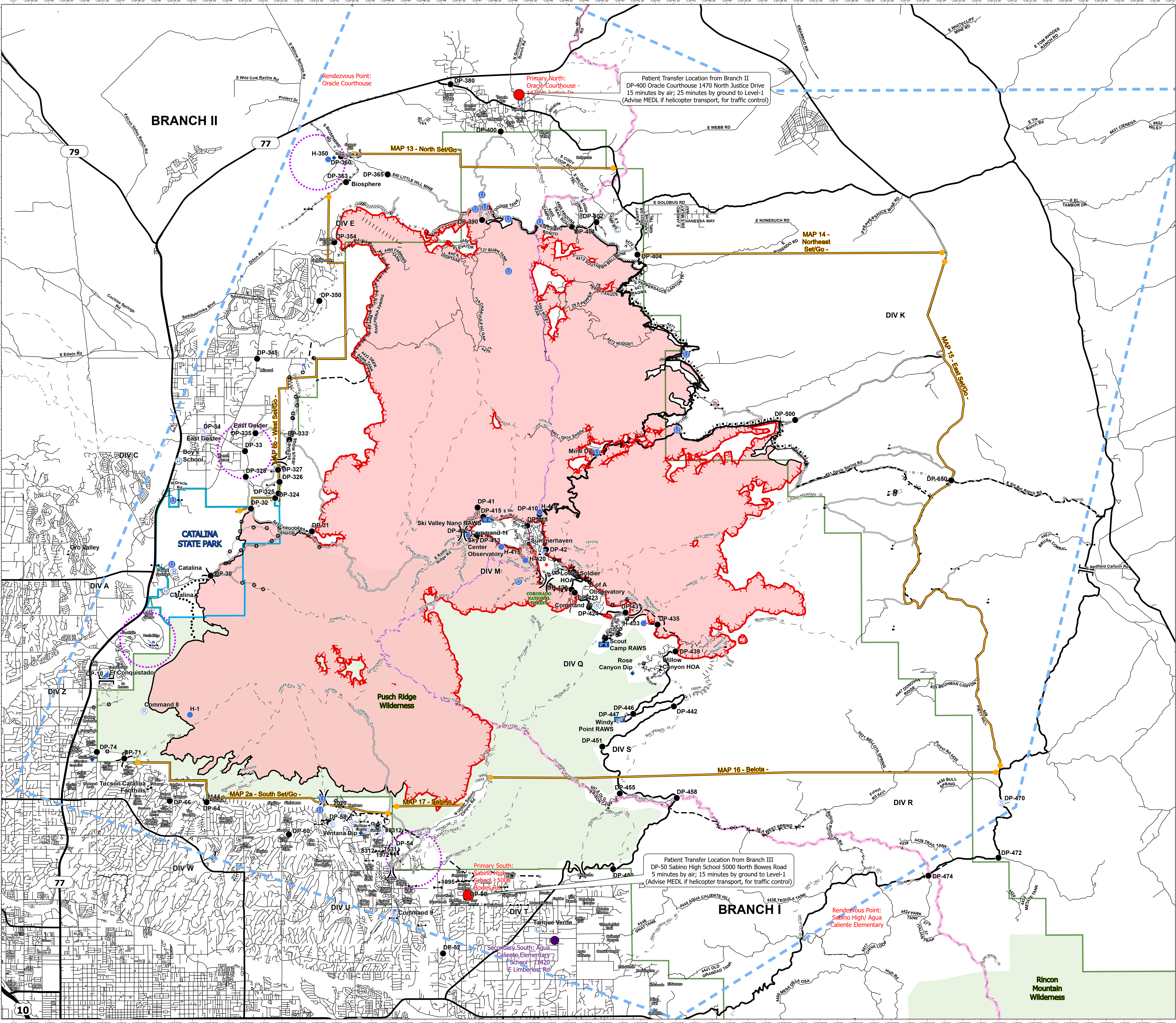


Scale: 1:50,000



swalterscheid
6/26/2020 0543

North American 1983 Datum. LatLong Grid



Patient Transfer Location from Branch II
DP-400 Oracle Courthouse 1470 North Justice Drive
15 minutes by air; 25 minutes by ground to Level-1
(Advise MEDL if helicopter transport, for traffic control)

Patient Transfer Location from Branch III
DP-50 Sabino High School 5000 North Bowes Road
5 minutes by air; 15 minutes by ground to Level-1
(Advise MEDL if helicopter transport, for traffic control)