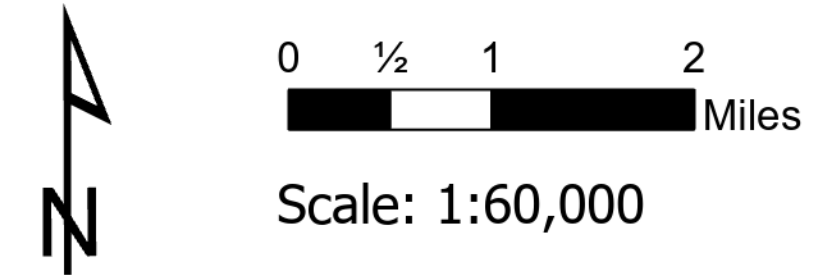


# Air Ops

Bighorn  
AZ-CNF-413  
6/29/2020

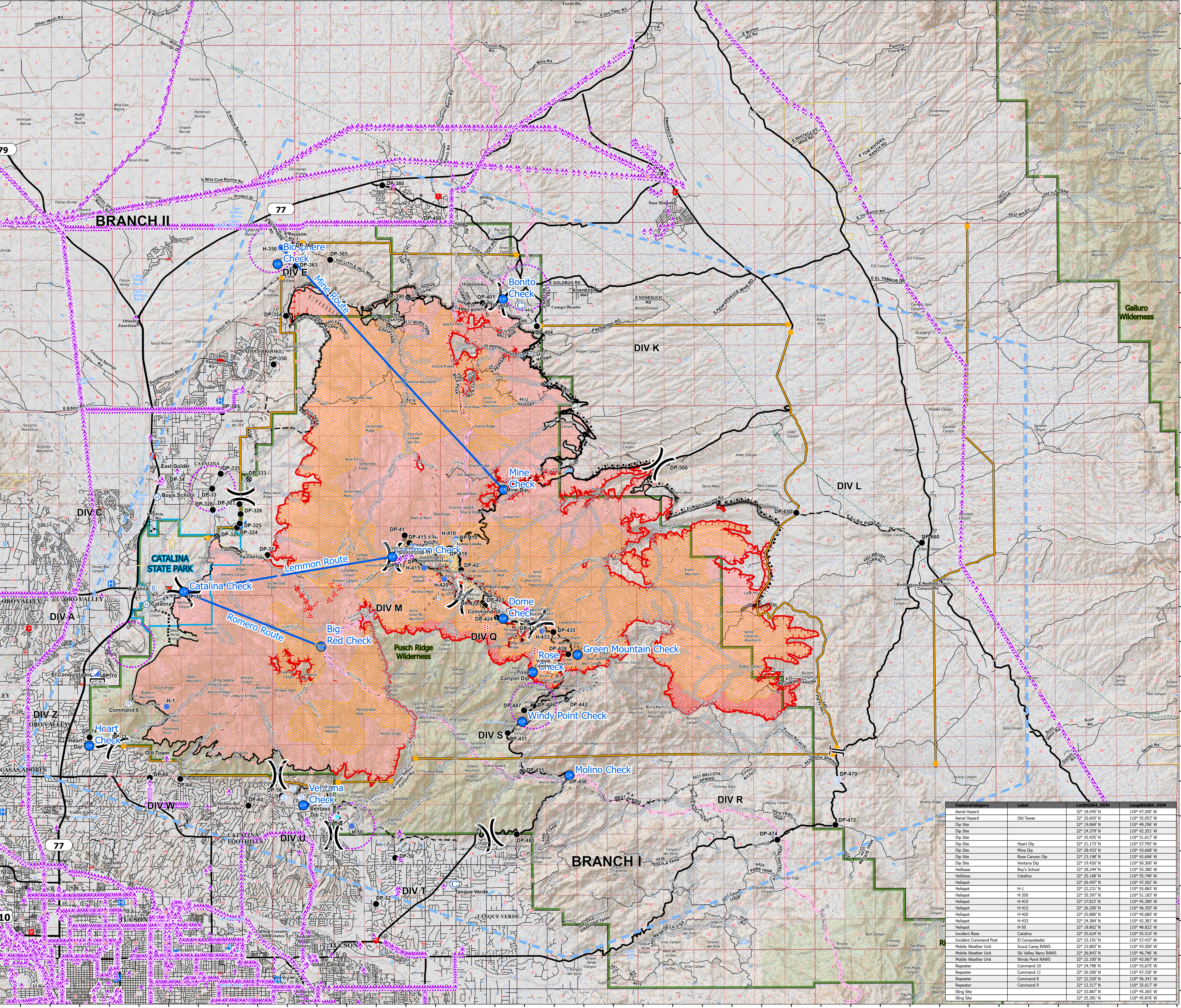
107,099 acres at 6/28/20 2159



- IR Isolated Heat Source
- IR Intense Heat
- IR Scattered Heat
- Aerial Hazard
- Aerial Ignition
- Camp
- Dip Site
- Drop Point
- Fire Station
- Helibase
- Hot Spot
- Incident Base
- Incident Command Post
- Internet Access
- Repeater
- Retardant in Avoidance Area
- Retardant/Mud Pit
- Sling Site
- Spot Fire
- Staging Area
- Restricted Water Source
- Water Development or Draft Site
- Division Break
- Branch Break
- Aerial Hazard
- Uncontrolled Fire Edge
- Contained Line
- Completed Dozer Line
- Completed Hand Line
- Road as Completed Line
- Line Break Completed
- Proposed Burnout
- Active Burnout
- Completed Burnout
- Proposed Dozer Line
- Fire Break Planned or Incomplete
- Planned Fire Line
- Planned Secondary Line
- Aerial Ignition
- Temporary Flight Restriction
- UAS Launch and Recovery Zone
- Management Action Point
- Hospital
- Fire Station
- Law Enforcement
- Pipeline
- Transportation
- Road
- Controlled access
- Highway or ramp
- Local connector
- Local or 4WD road
- Street
- Tunnel
- Ferry
- Trail
- Railroad
- Catalina State Park
- Coronado National Forest
- Bureau of Land Management
- National Park Service
- Retardant Avoidance Area
- Wildfire Daily Fire Perimeter
- Wilderness
- Trico Electric Equipment
- Overhead
- Underground
- Transportation
- Arizona Trail
- PilotCheckPoints
- PilotRoute



telchler  
6/29/2020 0445  
Acres from IR  
North American 1983 Datum, Lat/Long  
Grid



Feature/Category	Label	Lat/Long DDM	Long/Wide DDM
Aerial Hazard	Old Tower	32° 18.545' N	110° 47.200' W
Aerial Hazard		32° 20.693' N	110° 55.053' W
Dip Site		32° 19.069' N	110° 49.296' W
Dip Site		32° 24.379' N	110° 42.351' W
Dip Site		32° 35.435' N	110° 51.017' W
Dip Site	Heart Dip	32° 21.173' N	110° 57.795' W
Dip Site	Mine Dip	32° 28.433' N	110° 43.668' W
Dip Site	Rose Canyon Dip	32° 23.198' N	110° 42.696' W
Dip Site	Ventana Dip	32° 19.426' N	110° 50.300' W
Helibase	Boy's School	32° 28.244' N	110° 55.380' W
Helibase		32° 25.168' N	110° 55.740' W
Helispot		32° 26.497' N	110° 47.300' W
Helispot	H-1	32° 22.231' N	110° 55.865' W
Helispot	H-350	32° 25.397' N	110° 51.183' W
Helispot	H-410	32° 27.023' N	110° 45.280' W
Helispot	H-415	32° 26.200' N	110° 46.355' W
Helispot	H-420	32° 25.880' N	110° 45.680' W
Helispot	H-433	32° 24.384' N	110° 42.381' W
Helispot	H-50	32° 18.802' N	110° 48.822' W
Incident Base	Catalina	32° 25.624' N	110° 55.510' W
Incident Command Post	El Conquistador	32° 23.191' N	110° 57.437' W
Mobile Weather Unit	Scout Camp RAWs	32° 23.883' N	110° 43.500' W
Mobile Weather Unit	Ski Valley Nano RAWs	32° 26.843' N	110° 46.746' W
Mobile Weather Unit	Windy Point RAWs	32° 22.100' N	110° 43.067' W
Repeater	Command 10	32° 24.796' N	110° 43.675' W
Repeater	Command 11	32° 26.500' N	110° 47.330' W
Repeater	Command 8	32° 22.320' N	110° 56.341' W
Repeater	Command 9	32° 12.317' N	110° 35.617' W
Sling Site		32° 33.887' N	110° 45.265' W
Sling Site		32° 25.381' N	110° 45.876' W