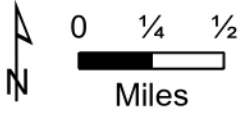
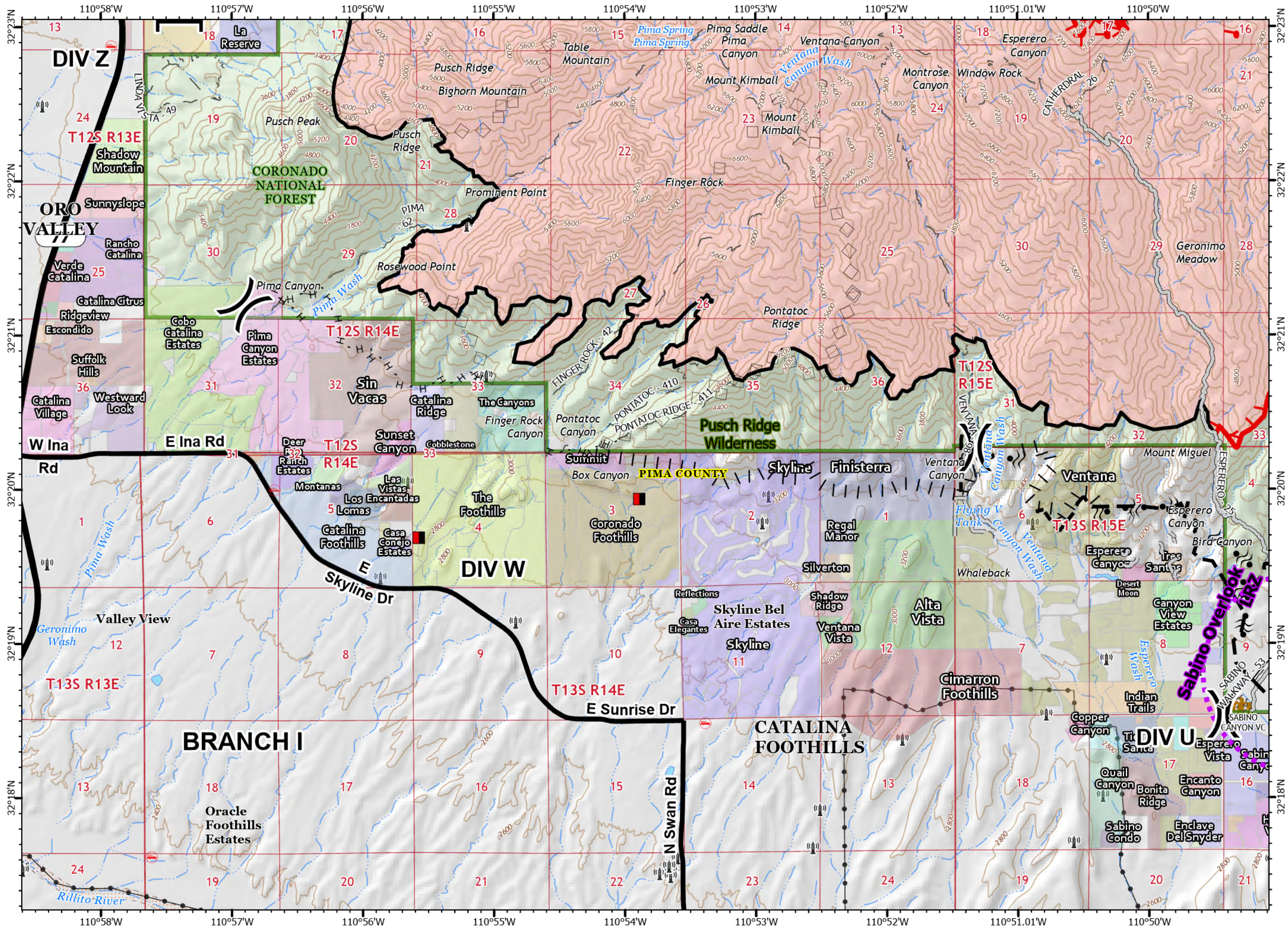


13	14	15	16
9	10	11	12
5	6	7	8
1	2	3	4

107,099 acres at 6/28/20 2159

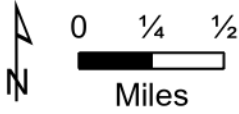


- Mines
 - Uncontrolled Fire Edge
 - Contained Line
 - Completed Hand Line
 - Access or Improved Road
 - Proposed Burnout
 - Planned Fire Line
 - Aerial Retardant Drop
 - Aerial Water Drop
 - UAS Launch and Recovery Zone
 - Fire area
 - Coronado National Forest
 - County or Equivalent
 - Communication Towers
 - Transmission Lines
 - Visitor/Information Center
 - Trailhead
 - Wilderness
- Transportation**
- Highway or ramp
 - Local connector
 - Local or 4WD road
 - Trail

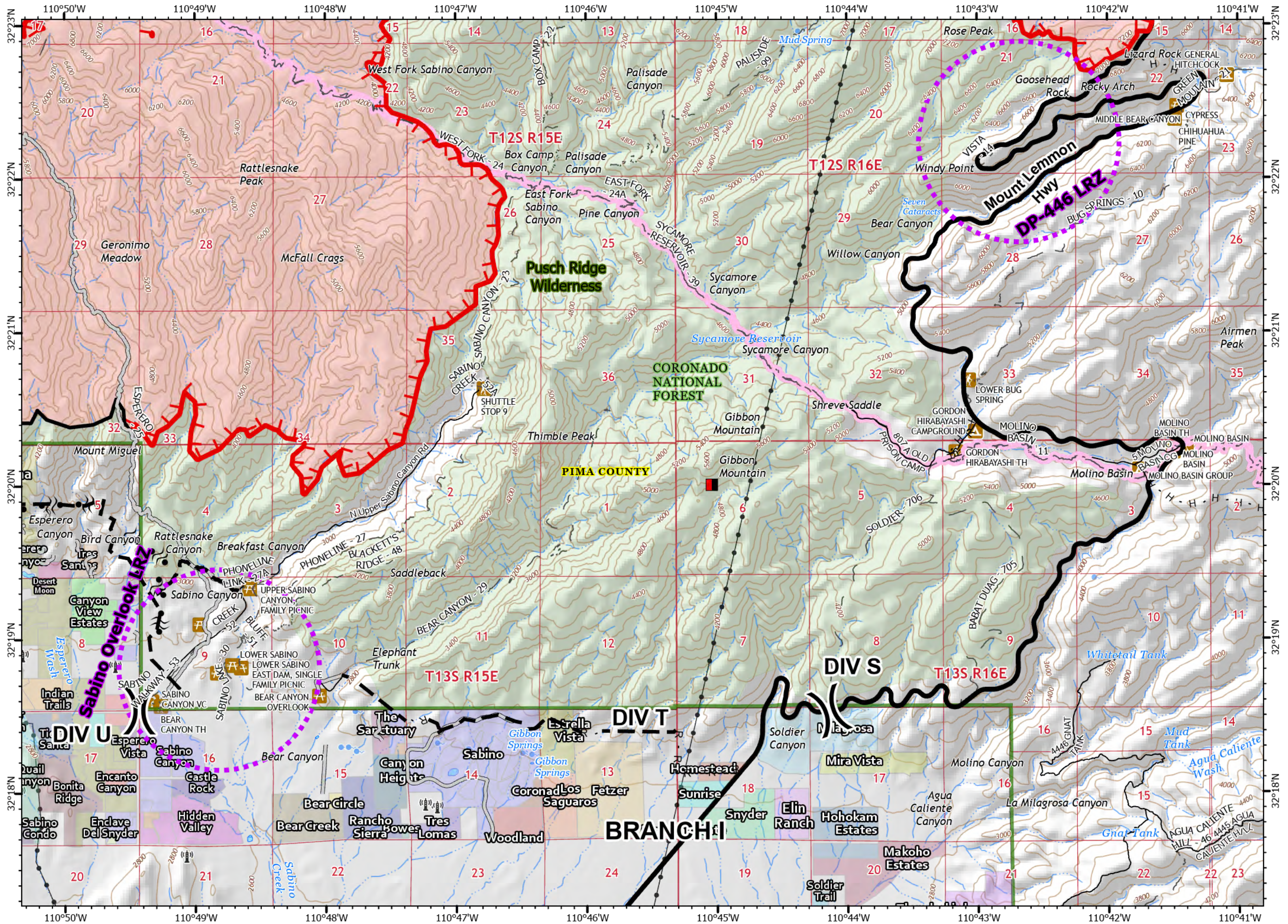


13	14	15	16
9	10	11	12
5	6	7	8
1	2	3	4

107,099 acres at 6/28/20 2159

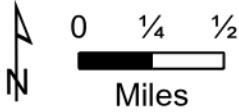


- Mines
- Uncontrolled Fire Edge
- Contained Line
- Completed Hand Line
- Road as Completed Line
- Access or Improved Road
- Proposed Burnout
- Planned Fire Line
- Aerial Retardant Drop
- Aerial Water Drop
- UAS Launch and Recovery Zone
- Fire area
- Coronado National Forest
- County or Equivalent
- Communication Towers
- Transmission Lines
- Visitor/Information Center
- Trailhead
- Picnic Area
- Campground
- Wilderness
- Transportation**
- Local connector
- Local or 4WD road
- Trail
- Arizona Trail

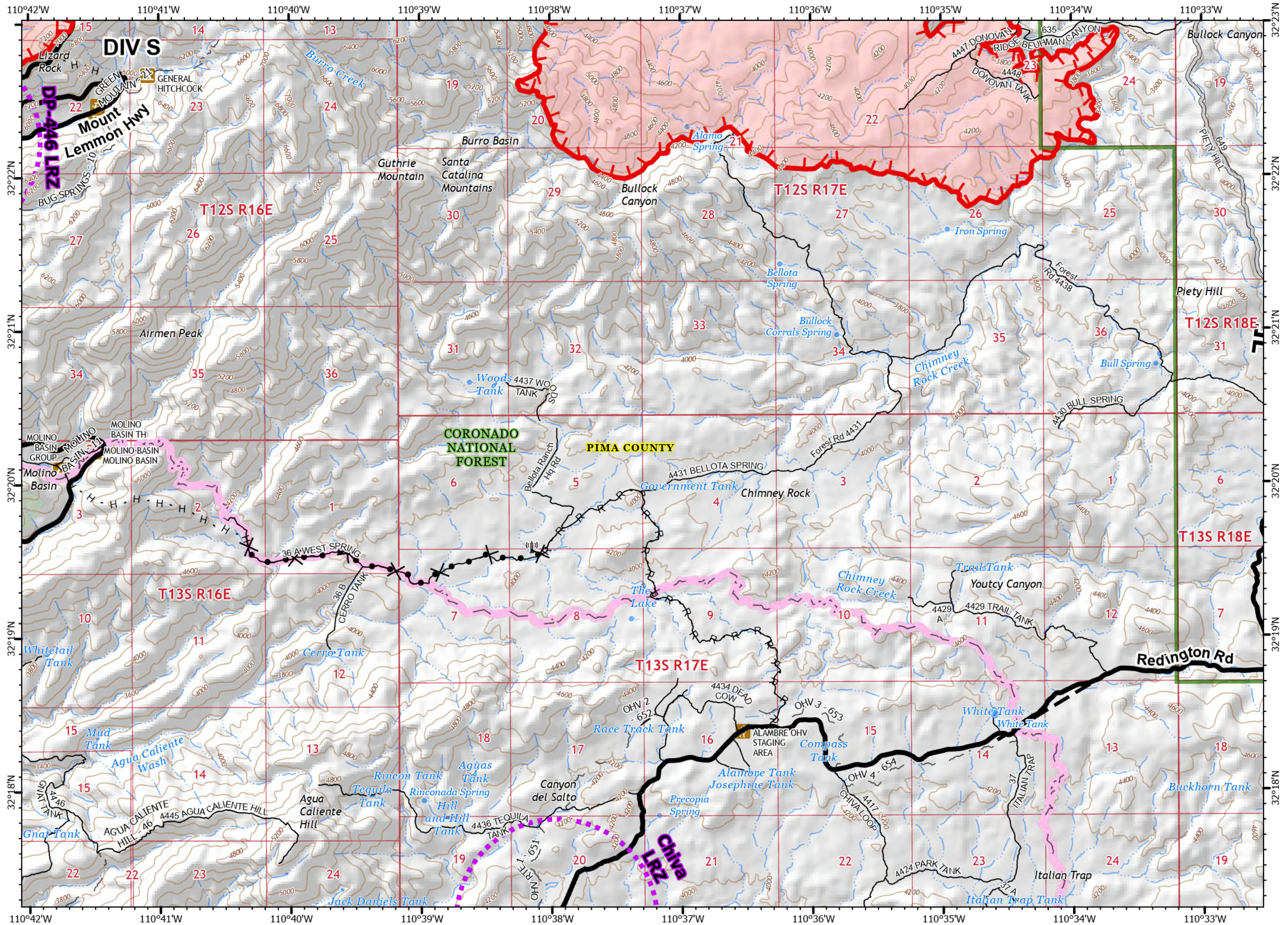


13	14	15	16
9	10	11	12
5	6	7	8
1	2	3	4

107,099 acres at 6/28/20 2159



- Uncontrolled Fire Edge
- Completed Hand Line
- Road as Completed Line
- Access or Improved Road
- Proposed Dozer Line
- Planned Fire Line
- UAS Launch and Recovery Zone
- Fire area
- Coronado National Forest
- County or Equivalent
- Communication_Towers
- Trailhead
- Picnic Area
- Campground
- Wilderness
- Transportation**
- Local connector
- Local or 4WD road
- Trail
- Arizona Trail

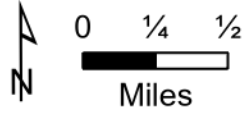


Bighorn
AZ-CNF-000413
6/29/2020 Night

13	14	15	16
9	10	11	12
5	6	7	8
1	2	3	4

107,099 acres at 6/28/20 2159

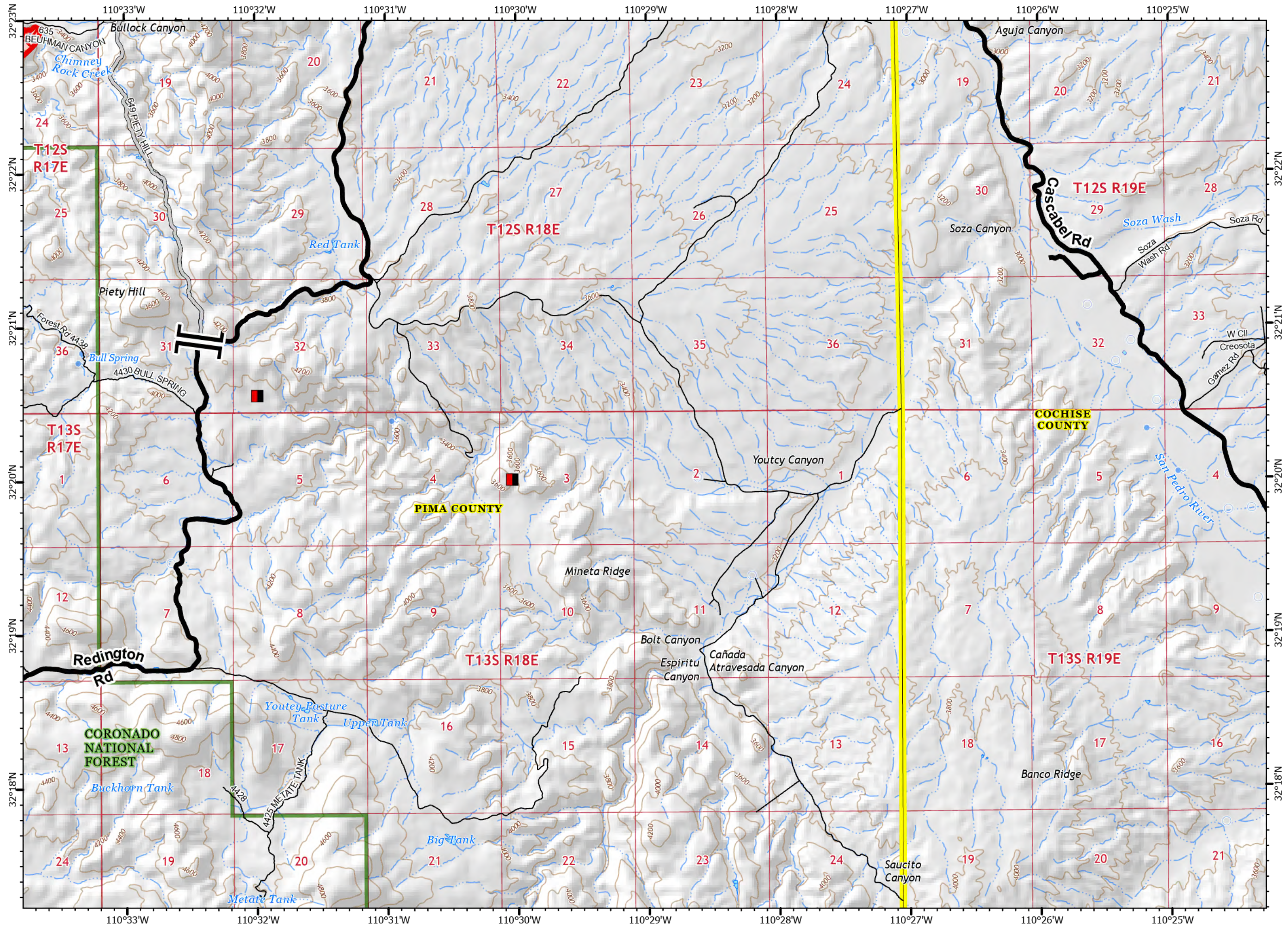
Page 4



- Mines
- Uncontrolled Fire Edge
- Access or Improved Road
- Planned Fire Line
- Fire area
- Coronado National Forest
- County or Equivalent

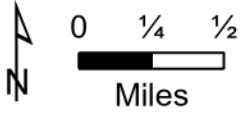
Transportation

- Local connector
- Local or 4WD road

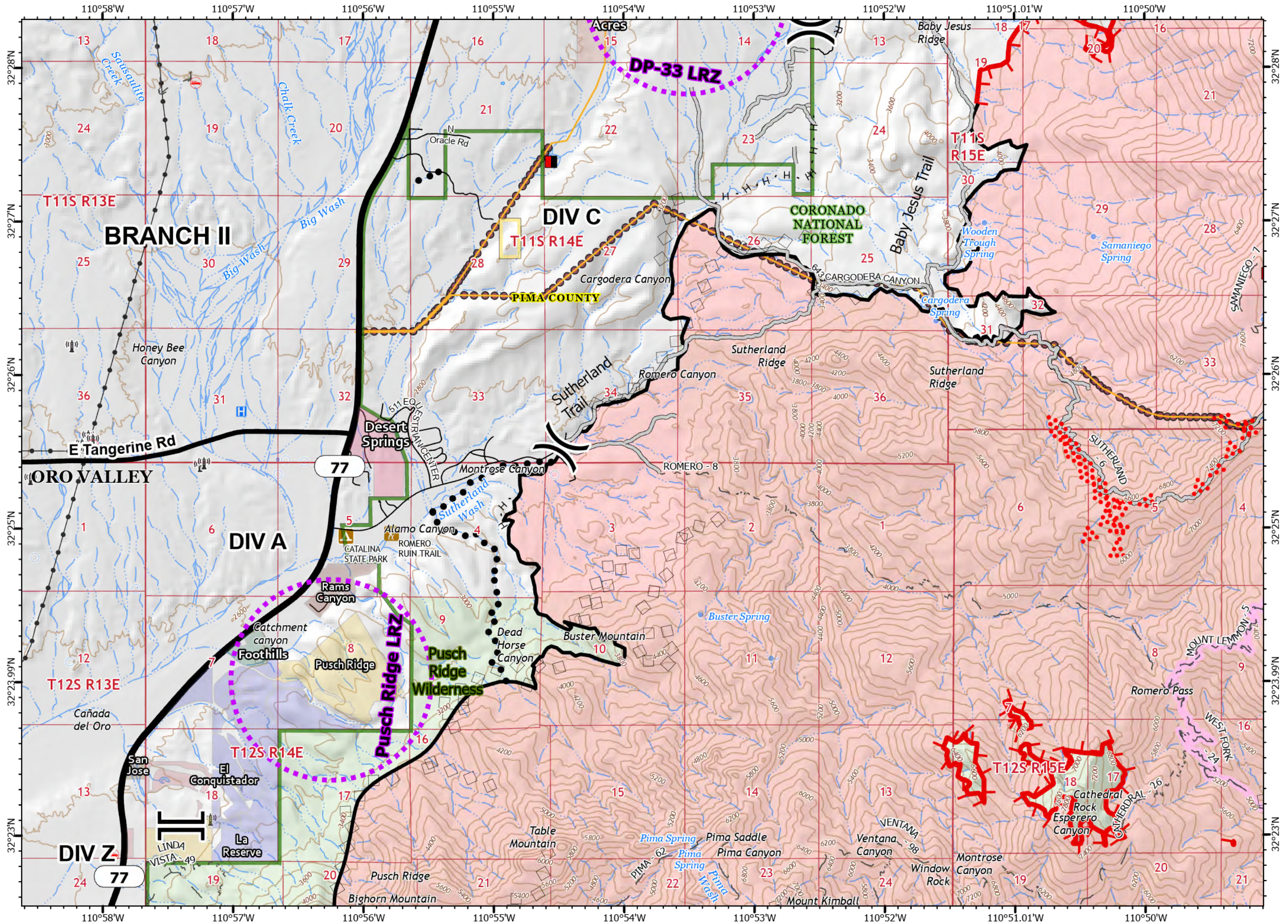


13	14	15	16
9	10	11	12
5	6	7	8
1	2	3	4

107,099 acres at 6/28/20 2159



- Mines
- Uncontrolled Fire Edge
- Contained Line
- Completed Hand Line
- Road as Completed Line
- Access or Improved Road
- Planned Secondary Line
- Aerial Ignition
- Aerial Retardant Drop
- UAS Launch and Recovery Zone
- Fire area
- Coronado National Forest
- Bureau of Land Management
- County or Equivalent
- Communication_Towers
- Overhead power
- Underground power
- Transmission Lines
- Trailhead
- Campground
- Wilderness
- Transportation**
- Highway or ramp
- Local connector
- Local or 4WD road
- Trail
- Arizona Trail

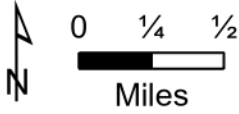


Bighorn
AZ-CNF-000413
6/29/2020 Night

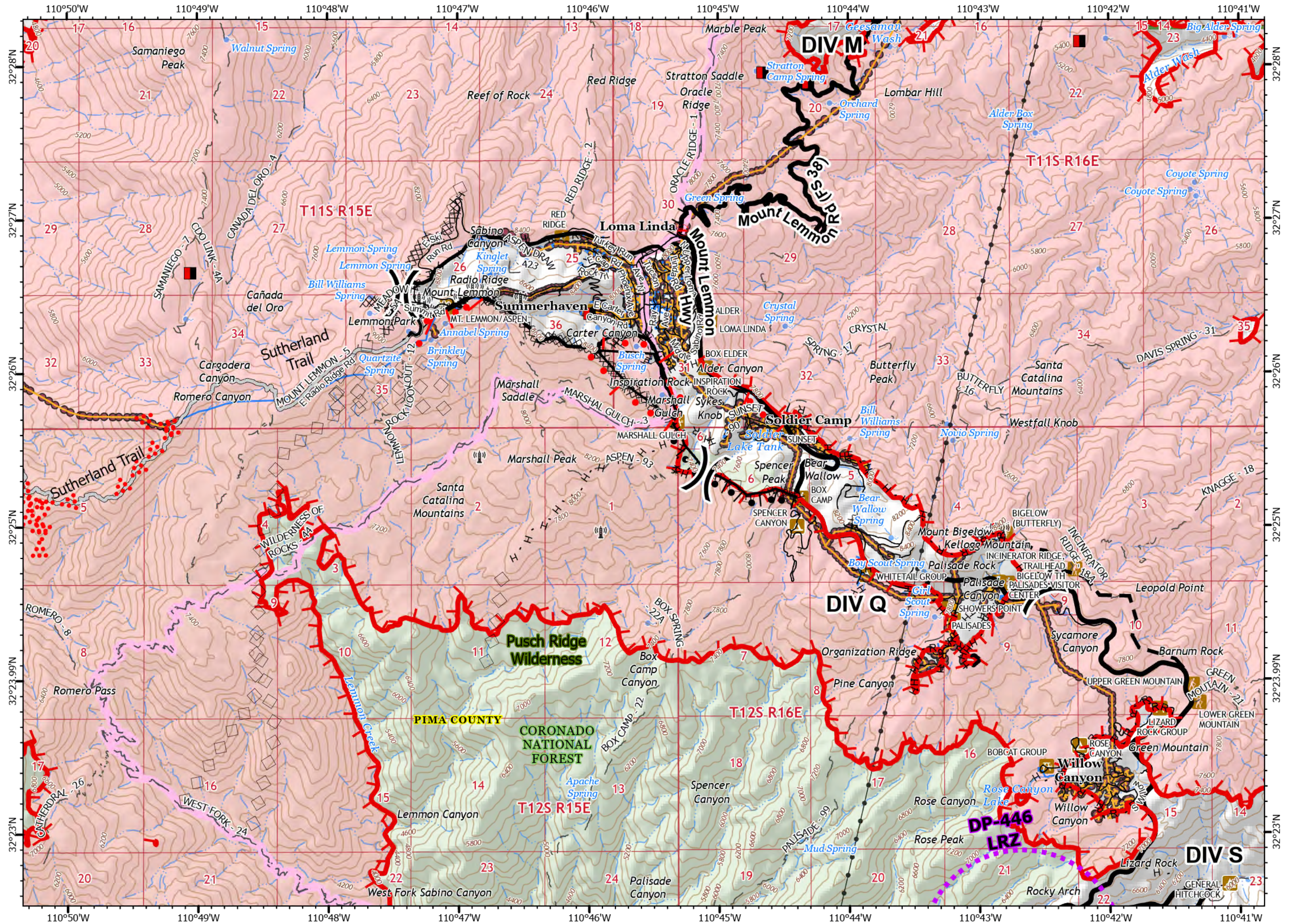
13	14	15	16
9	10	11	12
5	6	7	8
1	2	3	4

107,099 acres at 6/28/20 2159

Page 6



- Mines
 - Uncontrolled Fire Edge
 - Contained Line
 - Completed Dozer Line
 - Completed Hand Line
 - Road as Completed Line
 - Access or Improved Road
 - Proposed Burnout
 - Active Burnout
 - Completed Burnout
 - Planned Fire Line
 - Aerial Ignition
 - Aerial Retardant Drop
 - UAS Launch and Recovery Zone
 - Road Repair
 - Fire area
 - Coronado National Forest
 - County or Equivalent
 - Communication Towers
 - Overhead power
 - Underground power
 - Transmission Lines
 - Visitor/Information Center
 - Trailhead
 - Picnic Area
 - Campground
 - Wilderness
- Transportation**
- Local connector
 - Local or 4WD road
 - Trail
 - Arizona Trail

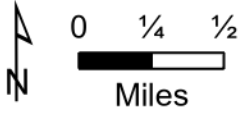


Bighorn
AZ-CNF-000413
6/29/2020 Night

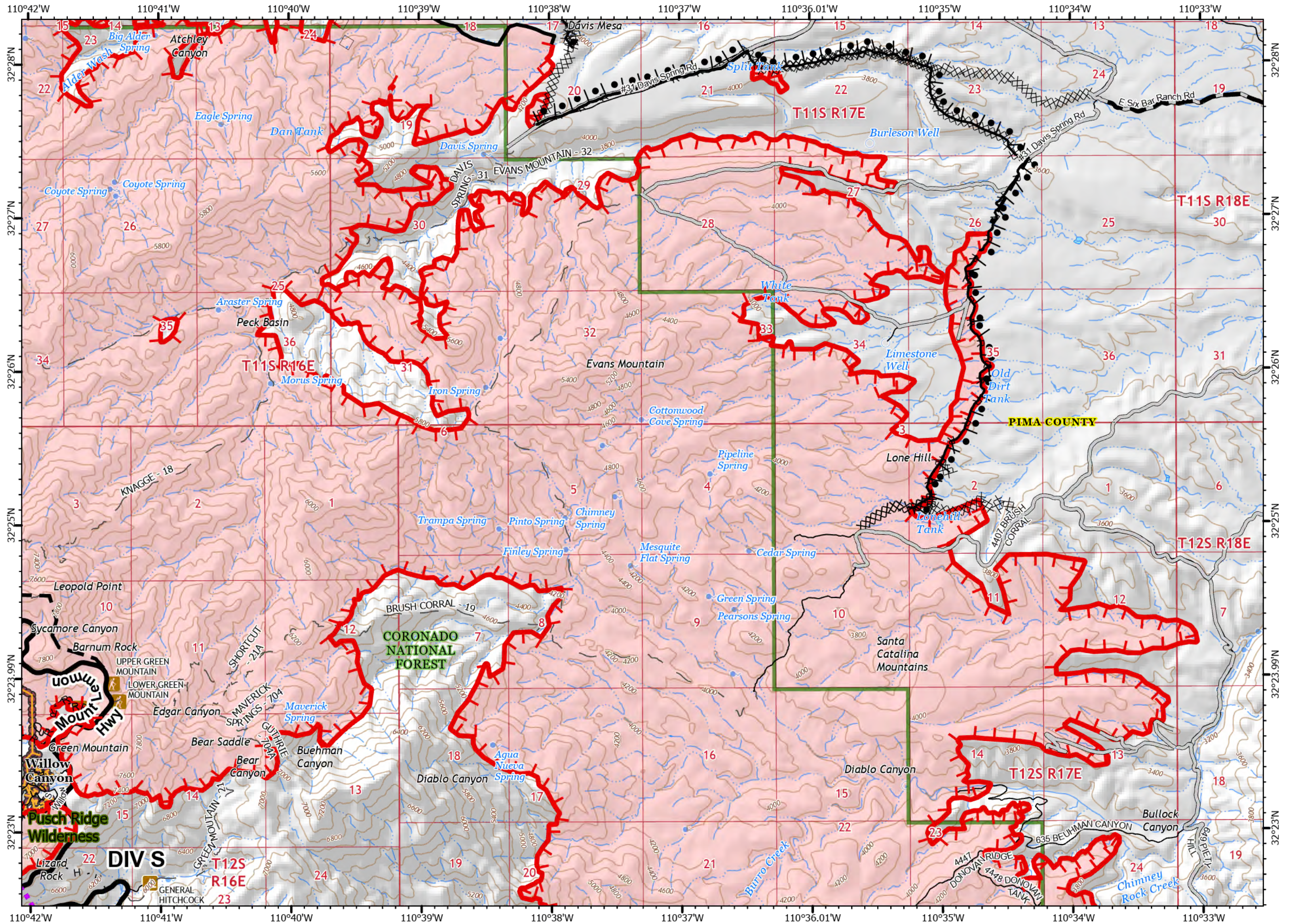
13	14	15	16
9	10	11	12
5	6	7	8
1	2	3	4

107,099 acres at 6/28/20 2159

Page 7



- Uncontrolled Fire Edge
- Contained Line
- Completed Dozer Line
- Completed Hand Line
- Road as Completed Line
- Access or Improved Road
- Completed Burnout
- Planned Fire Line
- Aerial Retardant Drop
- UAS Launch and Recovery Zone
- Fire area
- Coronado National Forest
- County or Equivalent
- Utility Infrastructure**
- Overhead power
- Underground power
- Trailhead
- Picnic Area
- Campground
- Wilderness
- Transportation**
- Local connector
- Local or 4WD road
- Trail

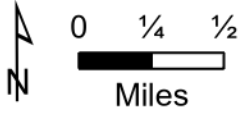


Bighorn
AZ-CNF-000413
6/29/2020 Night

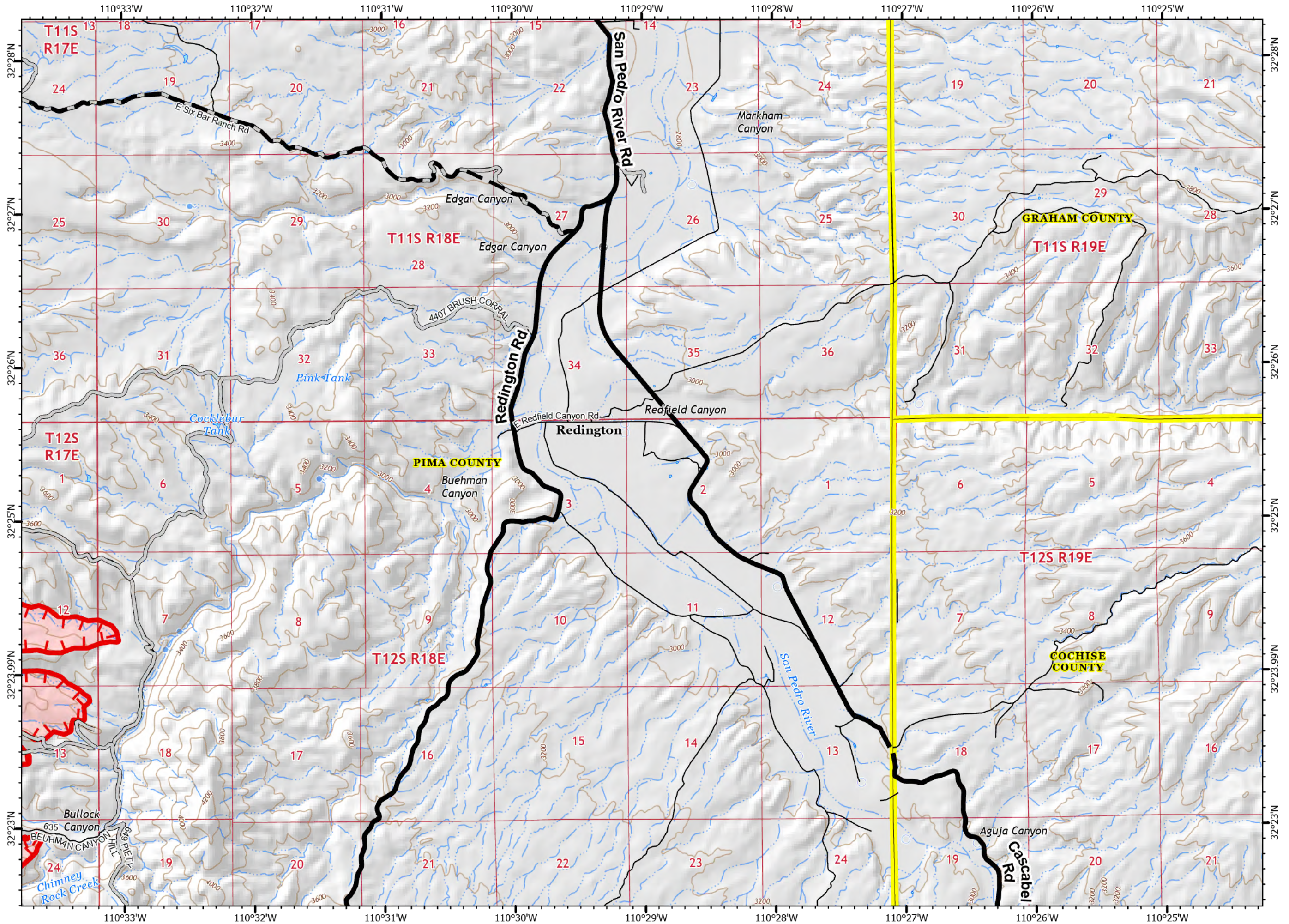
13	14	15	16
9	10	11	12
5	6	7	8
1	2	3	4

107,099 acres at 6/28/20 2159

Page 8

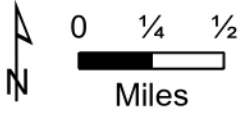


- Uncontrolled Fire Edge
 - Completed Dozer Line
 - Access or Improved Road
 - Planned Fire Line
 - Fire area
- Boundary**
- County or Equivalent
- Transportation**
- Local connector
 - Local or 4WD road

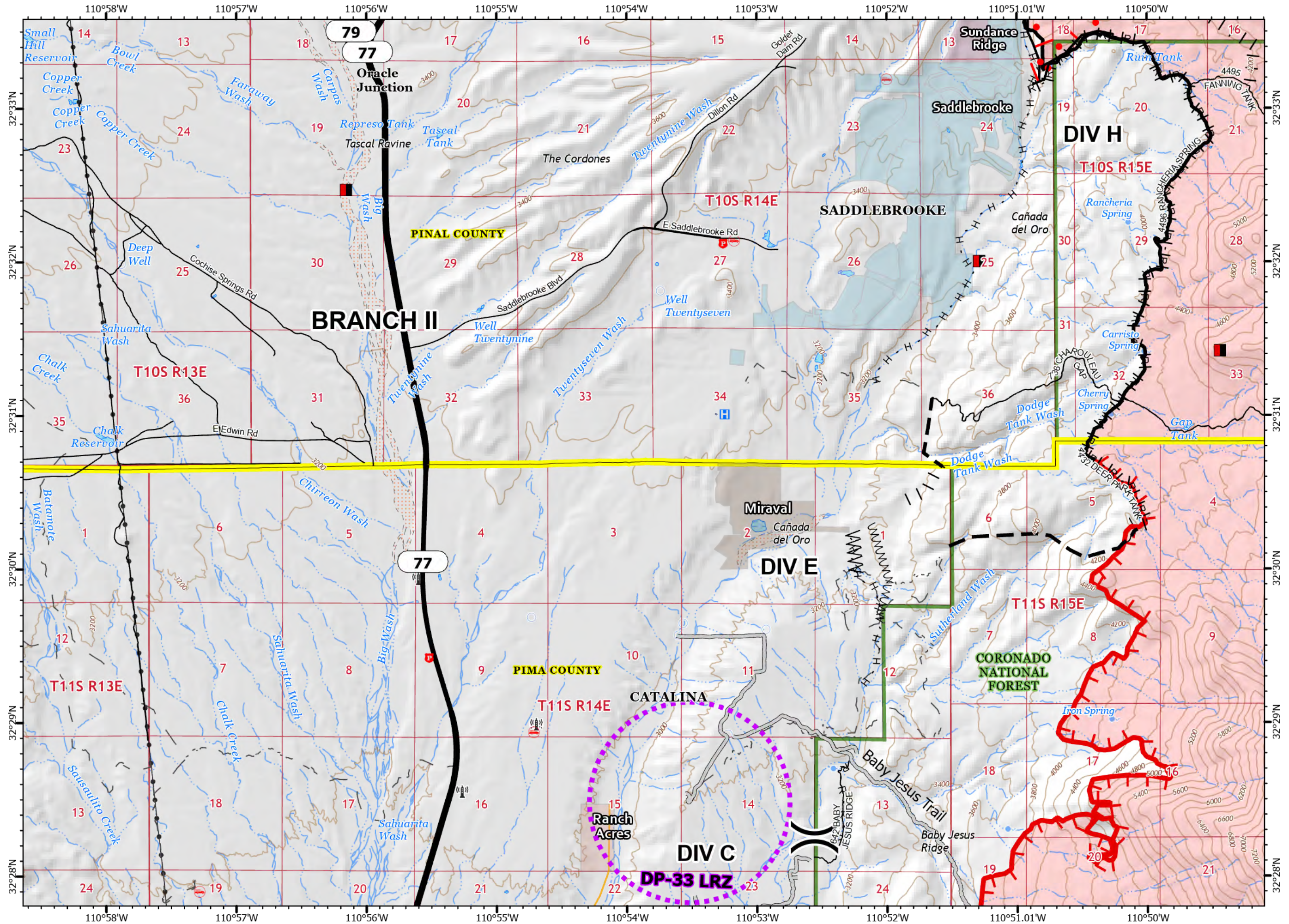


13	14	15	16
9	10	11	12
5	6	7	8
1	2	3	4

107,099 acres at 6/28/20 2159

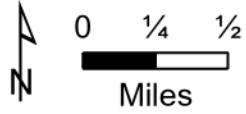


- Mines
- Uncontrolled Fire Edge
- Contained Line
- Completed Hand Line
- Road as Completed Line
- Access or Improved Road
- Line Break Completed
- Proposed Burnout
- Active Burnout

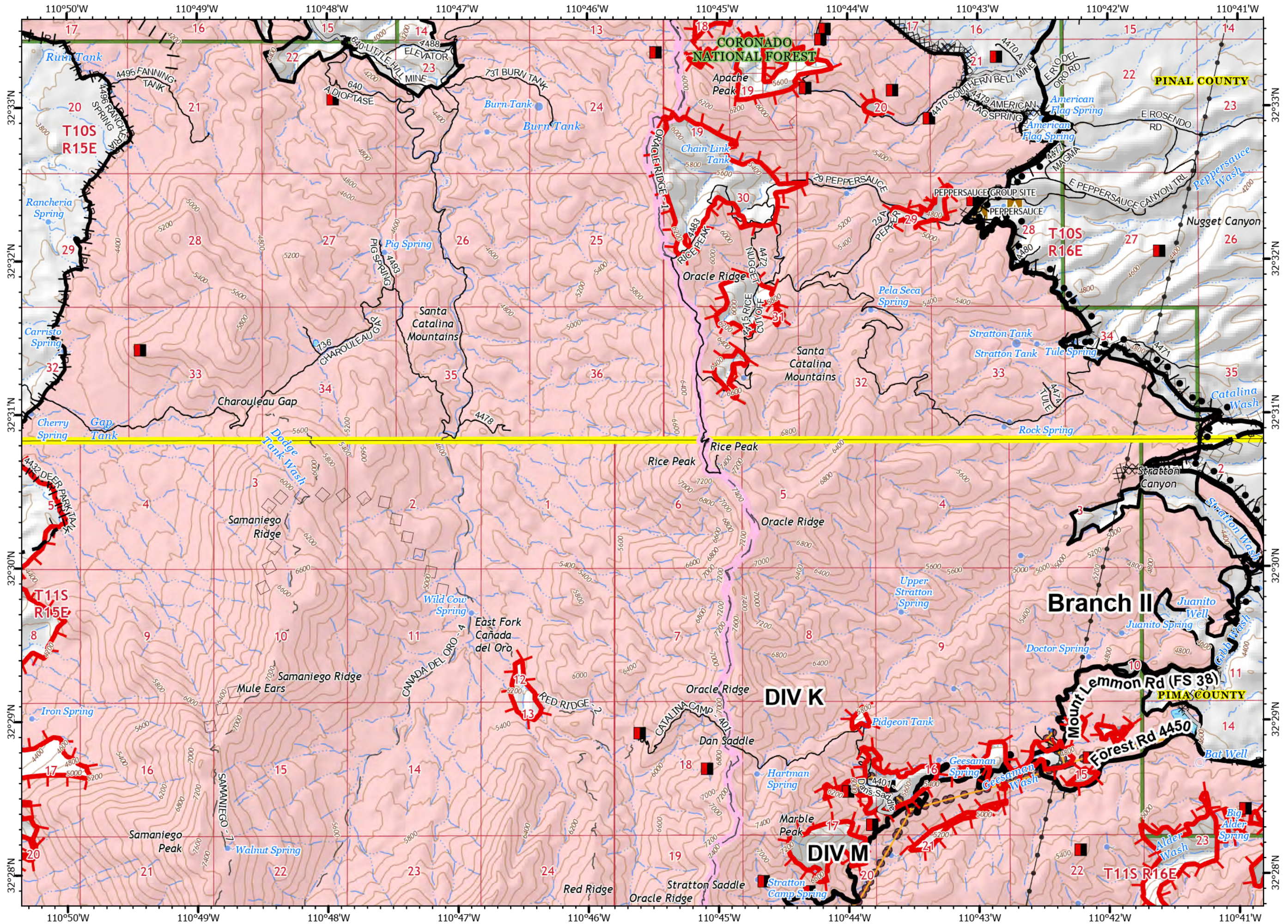


13	14	15	16
9	10	11	12
5	6	7	8
1	2	3	4

107,099 acres at 6/28/20 2159

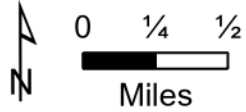


- Mines
 - Uncontrolled Fire Edge
 - Contained Line
 - Completed Dozer Line
 - Completed Hand Line
 - Road as Completed Line
 - Access or Improved Road
 - Proposed Burnout
 - Active Burnout
 - Completed Burnout
 - Planned Fire Line
 - Aerial Retardant Drop
 - Air Tanker Retardant
 - UAS Launch and Recovery Zone
 - Fire area
 - Coronado National Forest
 - County or Equivalent
- Utility Infrastructure
- Overhead power
 - Underground power
 - Transmission Lines
 - Campground
- Transportation
- Local connector
 - Local or 4WD road
 - Trail
 - Arizona Trail

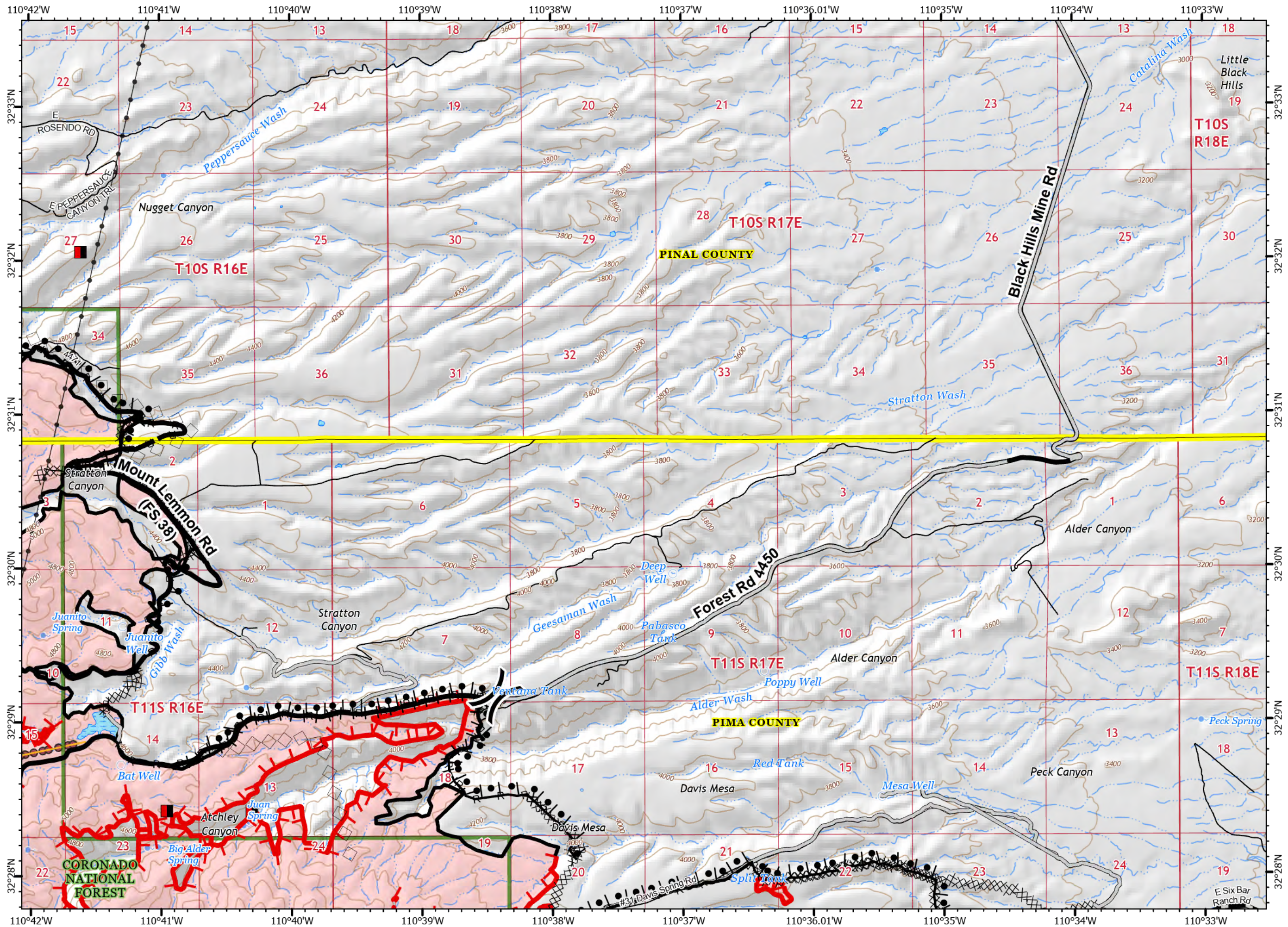


13	14	15	16
9	10	11	12
5	6	7	8
1	2	3	4

107,099 acres at 6/28/20 2159



- Mines
 - Uncontrolled Fire Edge
 - Contained Line
 - Completed Dozer Line
 - Road as Completed Line
 - Access or Improved Road
 - Proposed Burnout
 - Completed Burnout
 - Proposed Dozer Line
 - Planned Fire Line
 - Aerial Retardant Drop
 - Air Tanker Retardant
 - Fire area
 - Coronado National Forest
 - County or Equivalent
- Utility Infrastructure
- Overhead power
 - Transmission Lines
- Transportation
- Local connector
 - Local or 4WD road

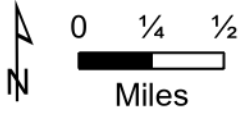


Bighorn
AZ-CNF-000413
6/29/2020 Night

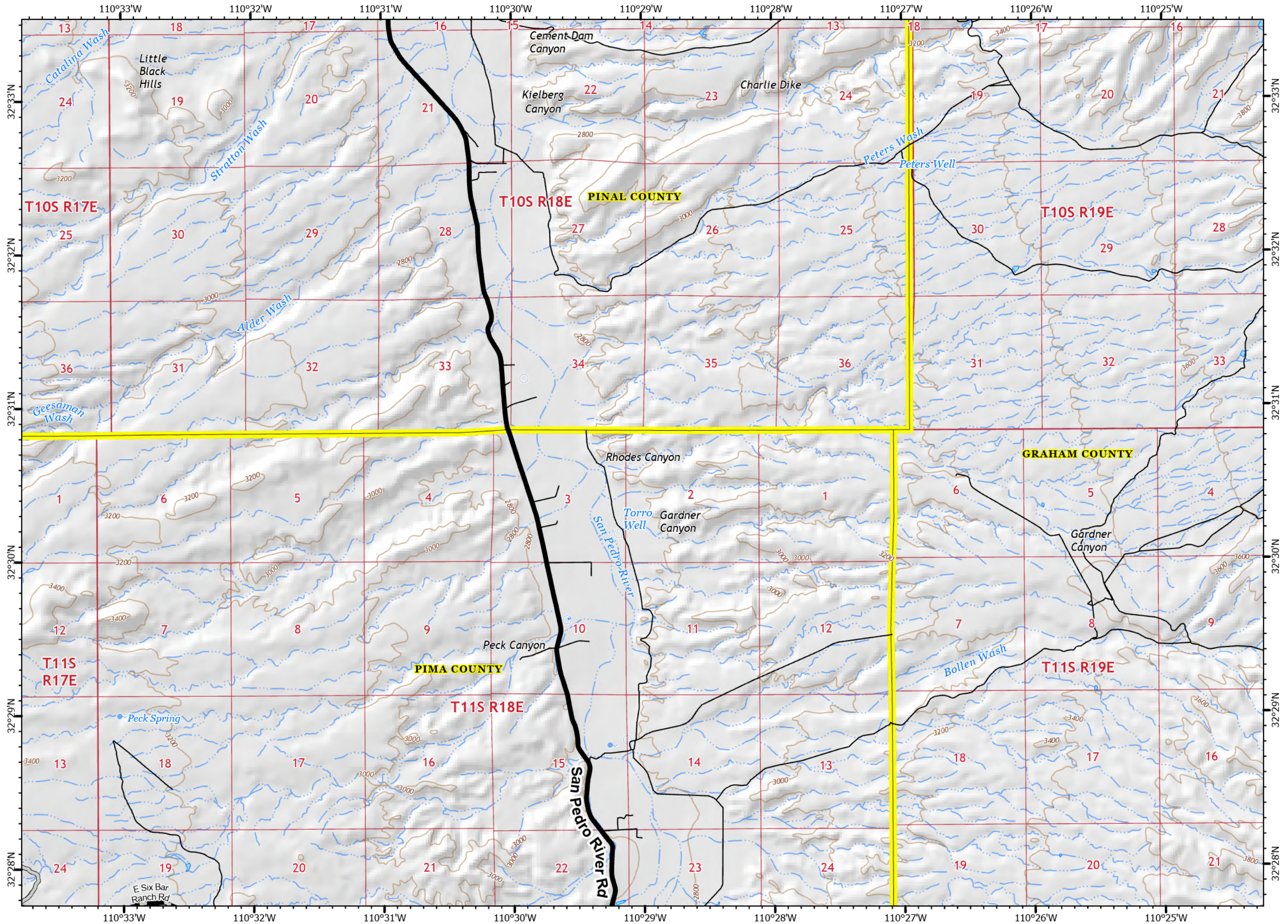
13	14	15	16
9	10	11	12
5	6	7	8
1	2	3	4

107,099 acres at 6/28/20 2159

Page 12

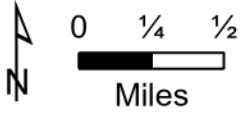


- XX Completed Dozer Line
- Access or Improved Road
- Planned Fire Line
- Boundary**
- County or Equivalent
- Transportation**
- Local connector
- Local or 4WD road

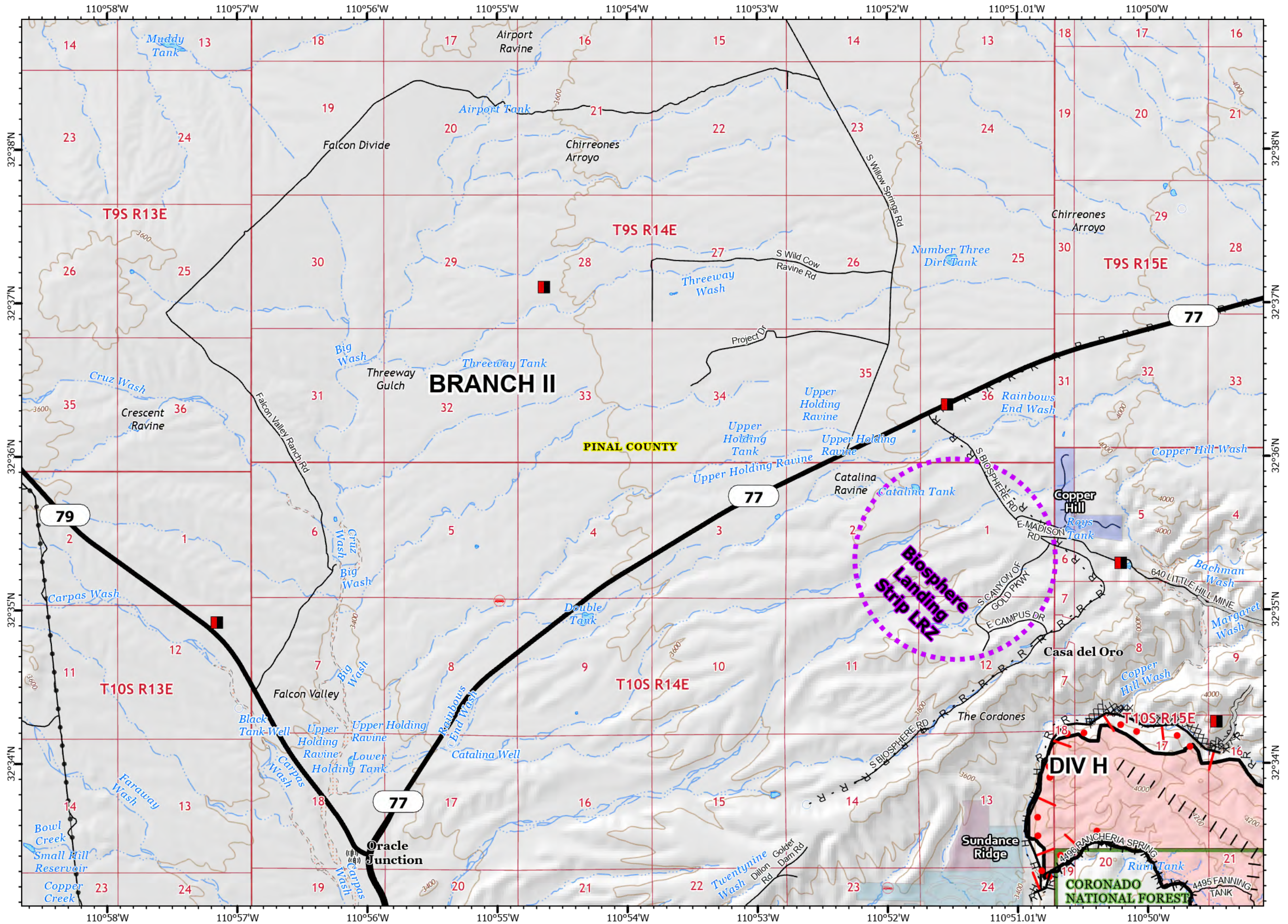


13	14	15	16
9	10	11	12
5	6	7	8
1	2	3	4

107,099 acres at 6/28/20 2159

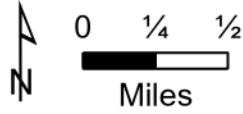


- Mines
 - Contained Line
 - Completed Dozer Line
 - Completed Hand Line
 - Road as Completed Line
 - Access or Improved Road
 - Proposed Burnout
 - Active Burnout
 - UAS Launch and Recovery Zone
 - Fire area
 - Coronado National Forest
 - County or Equivalent
 - Communication_Towers
 - Transmission Lines
- Transportation
- Highway or ramp
 - Local or 4WD road

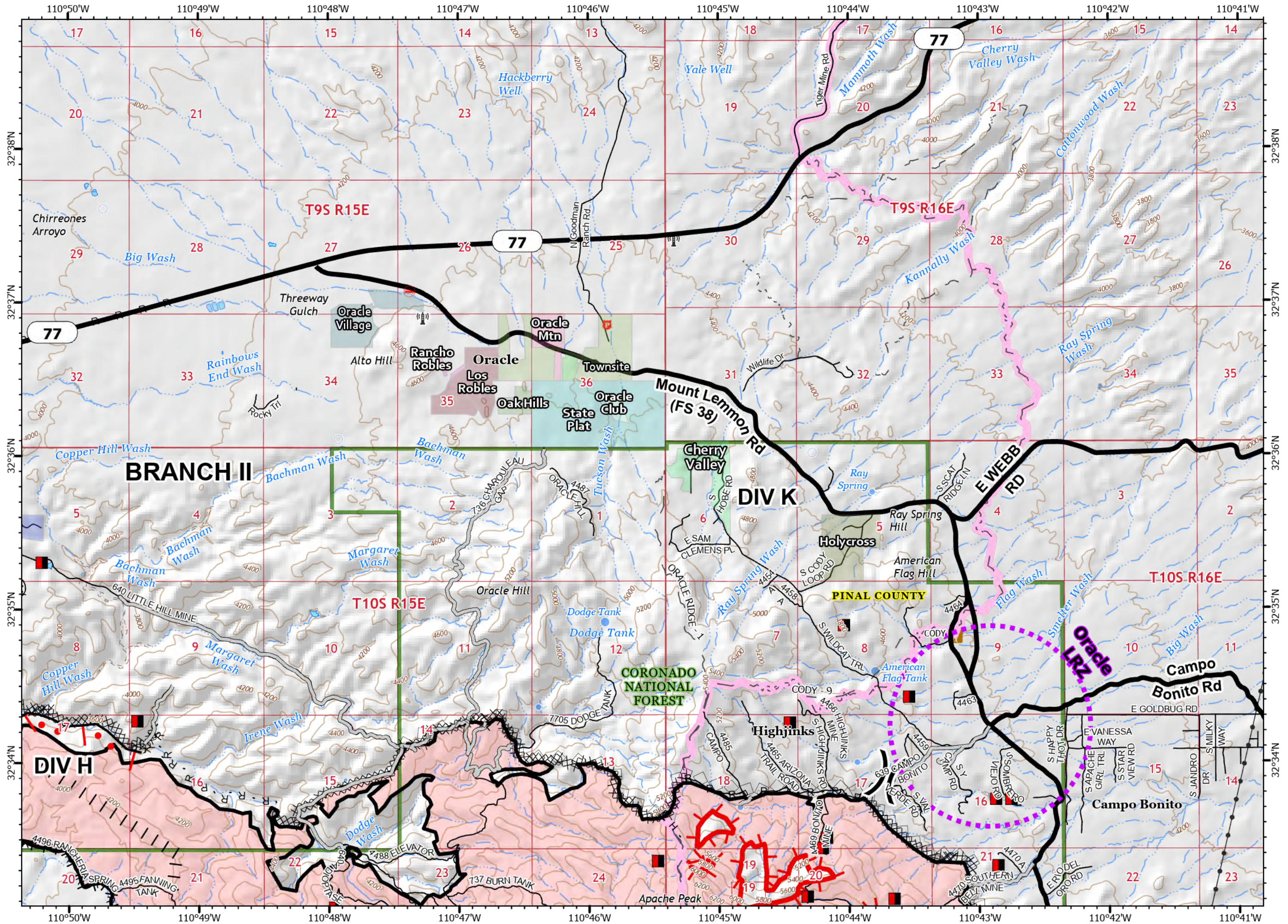


13	14	15	16
9	10	11	12
5	6	7	8
1	2	3	4

107,099 acres at 6/28/20 2159

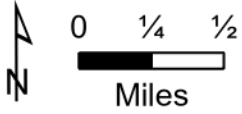


- Mines
 - Uncontrolled Fire Edge
 - Contained Line
 - Completed Dozer Line
 - Completed Hand Line
 - Road as Completed Line
 - Access or Improved Road
 - Proposed Burnout
 - Active Burnout
 - Aerial Retardant Drop
 - Air Tanker Retardant
 - UAS Launch and Recovery Zone
 - Fire area
 - Coronado National Forest
 - County or Equivalent
 - Communication Towers
 - Transmission Lines
 - Trailhead
- Transportation**
- Highway or ramp
 - Local connector
 - Local or 4WD road
 - Trail
 - Arizona Trail

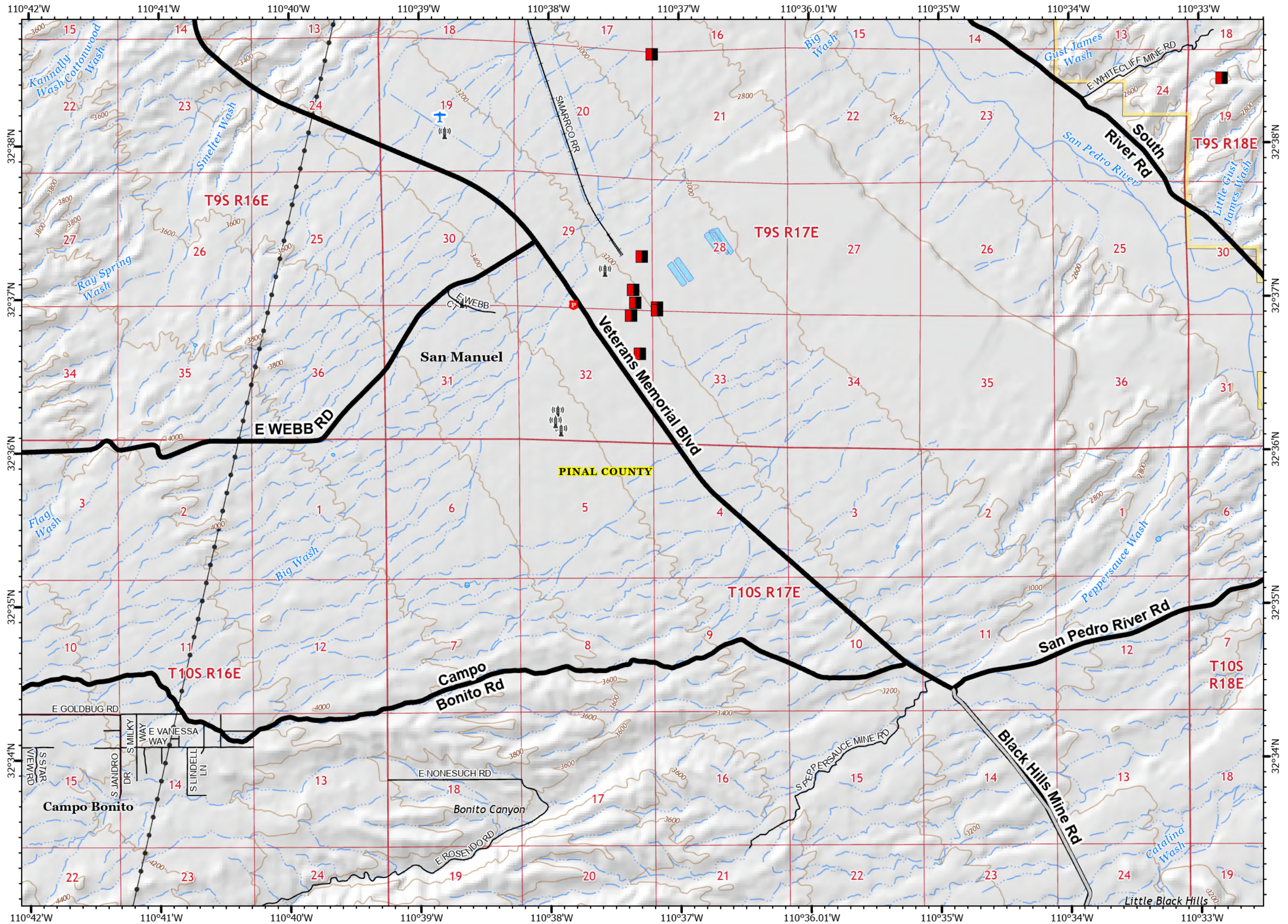


13	14	15	16
9	10	11	12
5	6	7	8
1	2	3	4

107,099 acres at 6/28/20 2159

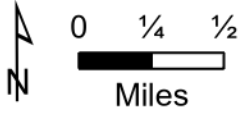


- Mines
- Access or Improved Road
- UAS Launch and Recovery Zone
- Bureau of Land Management
- County or Equivalent
- Communication_Towers
- Transmission Lines
- Airstrip
- Transportation
 - Local connector
 - Local or 4WD road
 - RailRoad



13	14	15	16
9	10	11	12
5	6	7	8
1	2	3	4

107,099 acres at 6/28/20 2159



- Mines
 - Access or Improved Road
 - Coronado National Forest
 - Bureau of Land Management
 - County or Equivalent
 - Wilderness
- Transportation**
- Local connector
 - Local or 4WD road
 - Trail

