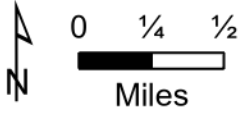
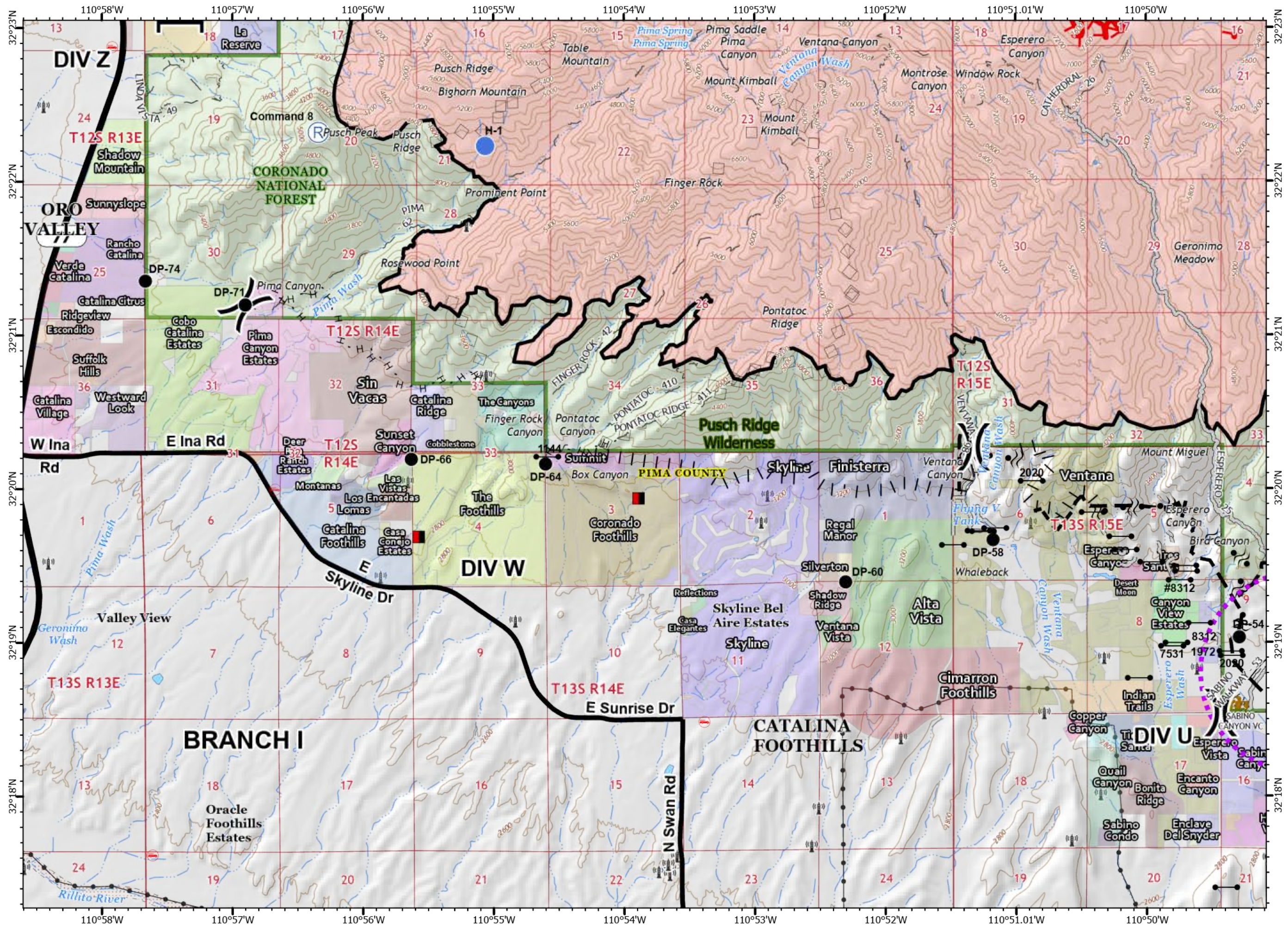


13	14	15	16
9	10	11	12
5	6	7	8
1	2	3	4

118,370 acres at 6/30/20 2040



- Mines
  - Uncontrolled Fire Edge
  - Contained Line
  - Completed Hand Line
  - Access or Improved Road
  - Proposed Burnout
  - Planned Fire Line
  - Aerial Retardant Drop
  - Aerial Water Drop
  - UAS Launch and Recovery Zone
  - Fire area
  - Coronado National Forest
  - County or Equivalent
  - Communication Towers
  - Transmission Lines
  - Visitor/Information Center
  - Trailhead
  - Wilderness
- Transportation**
- Highway or ramp
  - Local connector
  - Local or 4WD road
  - Trail

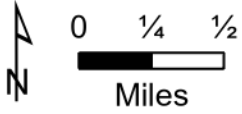


Bighorn  
AZ-CNF-000413  
7/2/2020 Day

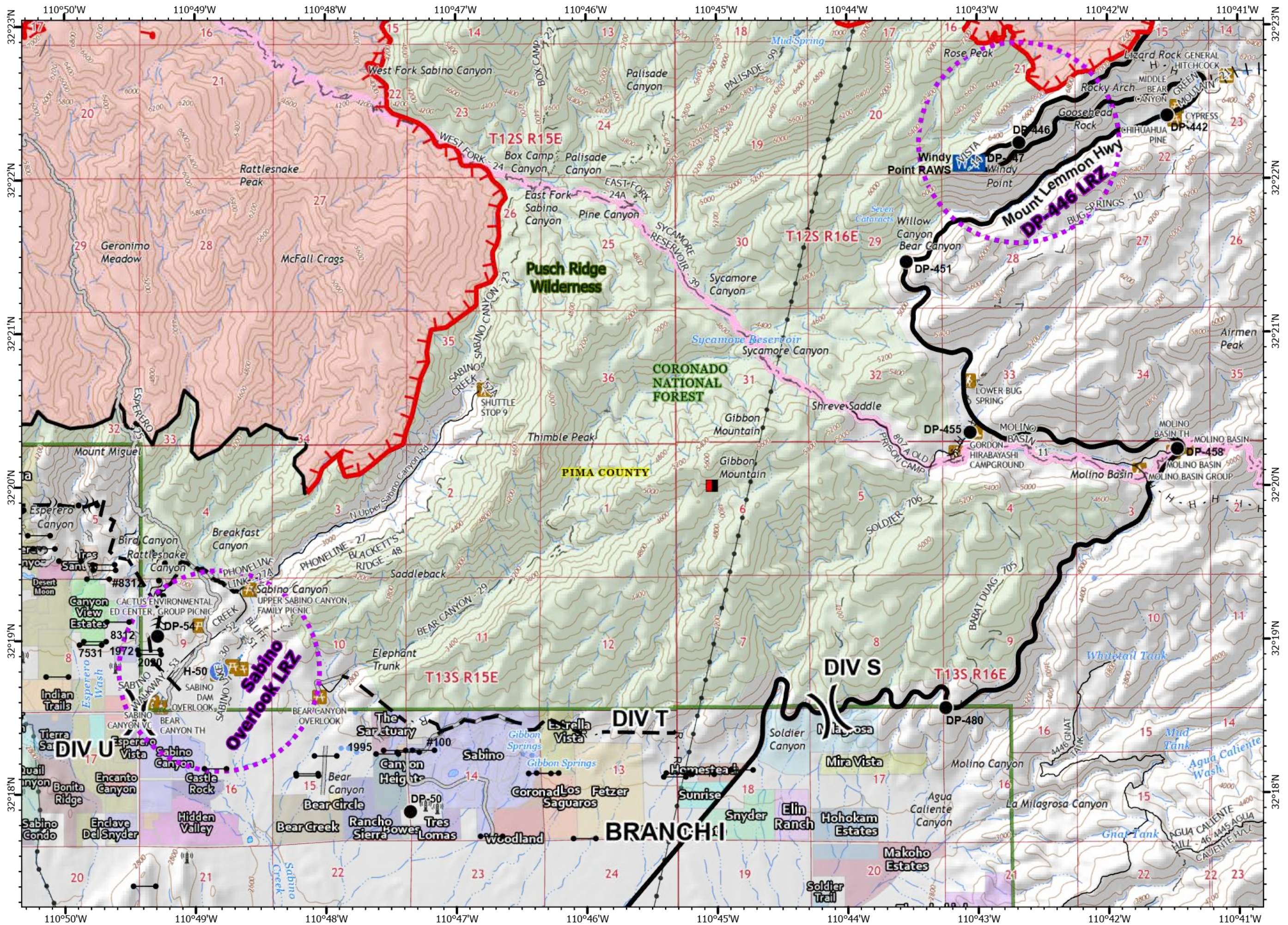
13	14	15	16
9	10	11	12
5	6	7	8
1	2	3	4

118,370 acres at 6/30/20 2040

Page 2



- Mines
- Uncontrolled Fire Edge
- Contained Line
- Completed Hand Line
- Road as Completed Line
- Access or Improved Road
- Proposed Burnout
- Planned Fire Line
- Aerial Retardant Drop
- Aerial Water Drop
- UAS Launch and Recovery Zone
- Fire area
- Coronado National Forest
- County or Equivalent
- Communication Towers
- Transmission Lines
- Visitor/Information Center
- Trailhead
- Picnic Area
- Campground
- Wilderness
- Transportation**
- Local connector
- Local or 4WD road
- Trail
- Arizona Trail

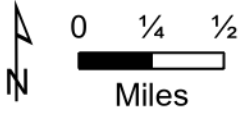


Bighorn  
AZ-CNF-000413  
7/2/2020 Day

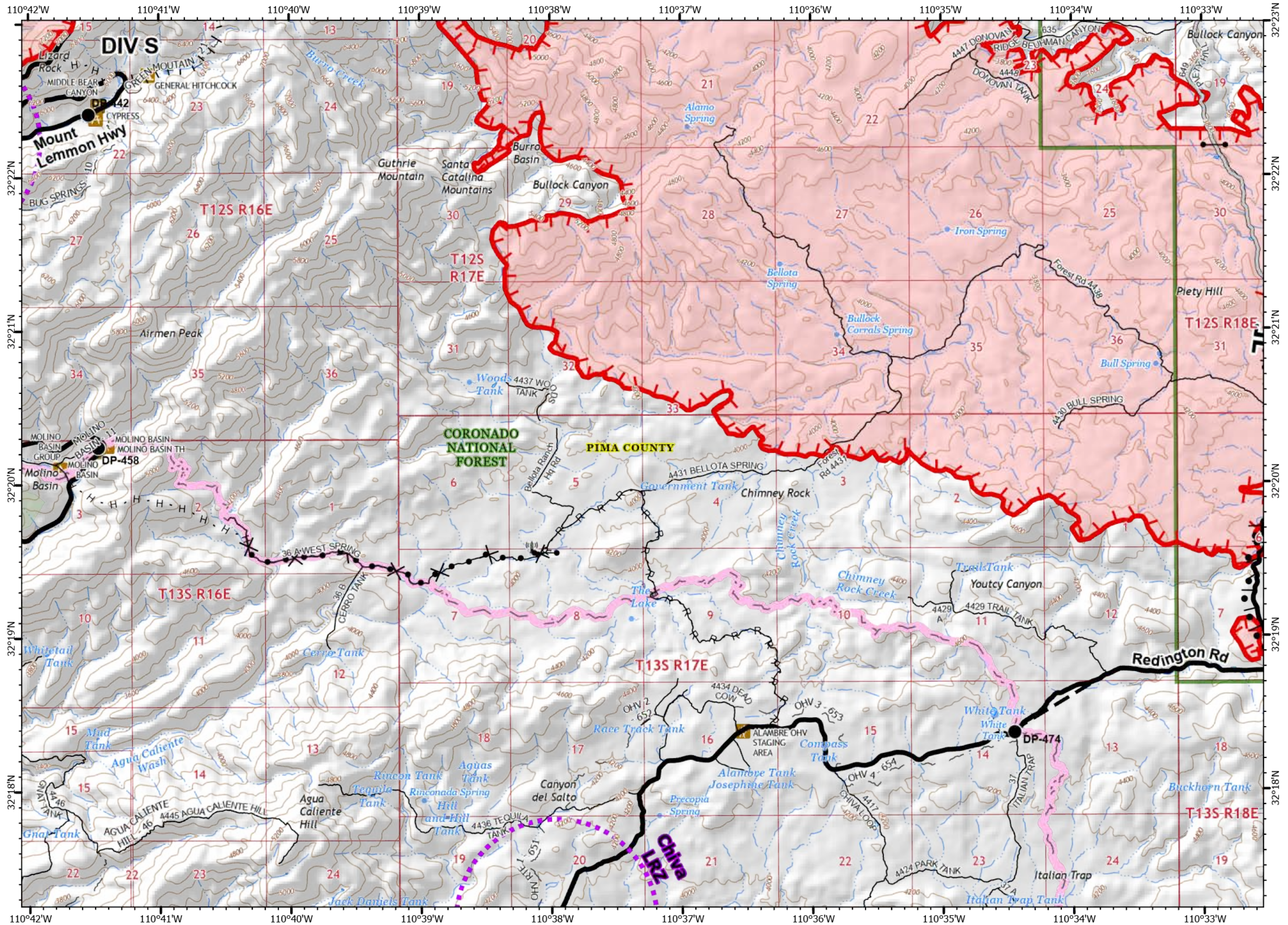
13	14	15	16
9	10	11	12
5	6	7	8
1	2	3	4

118,370 acres at 6/30/20 2040

Page 3



- Uncontrolled Fire Edge
  - Contained Line
  - Completed Hand Line
  - Road as Completed Line
  - Access or Improved Road
  - Proposed Burnout
  - Completed Burnout
  - Proposed Dozer Line
  - Planned Fire Line
  - UAS Launch and Recovery Zone
  - Fire area
  - Coronado National Forest
  - County or Equivalent
  - Communication Towers
  - Trailhead
  - Picnic Area
  - Campground
  - Wilderness
- Transportation**
- Local connector
  - Local or 4WD road
  - Trail
  - Arizona Trail

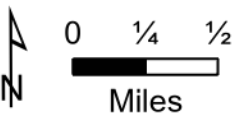


**Bighorn**  
**AZ-CNF-000413**  
**7/2/2020 Day**

13	14	15	16
9	10	11	12
5	6	7	8
1	2	3	4

118,370 acres at 6/30/20 2040

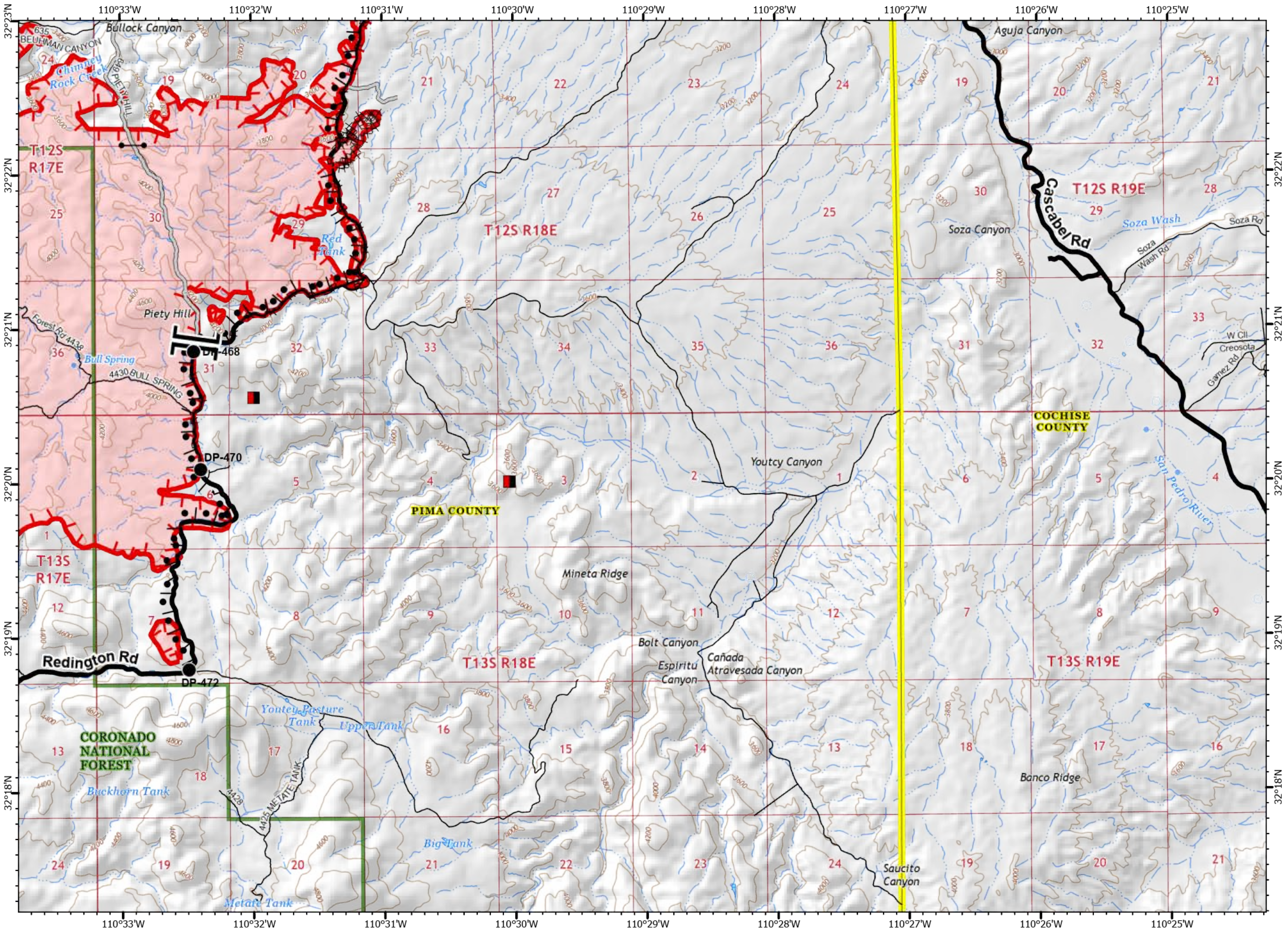
**Page 4**



- Mines
- Uncontrolled Fire Edge
- Completed Dozer Line
- Road as Completed Line
- Access or Improved Road
- Completed Burnout
- Planned Fire Line
- Fire area
- Coronado National Forest
- County or Equivalent

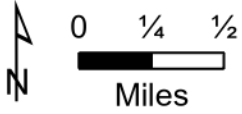
**Transportation**

- Local connector
- Local or 4WD road

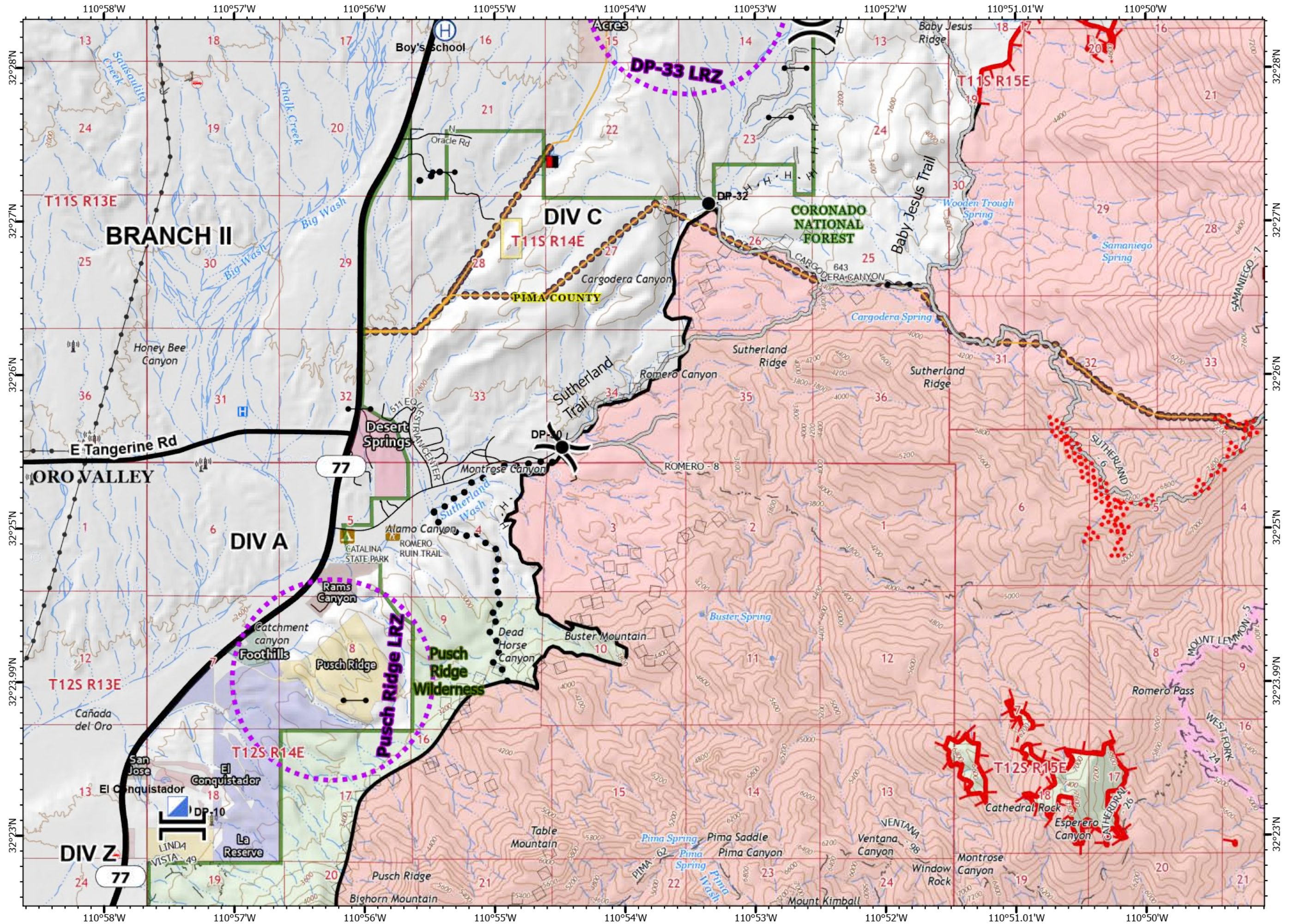


13	14	15	16
9	10	11	12
5	6	7	8
1	2	3	4

118,370 acres at 6/30/20 2040



- Mines
- Uncontrolled Fire Edge
- Contained Line
- Completed Hand Line
- Road as Completed Line
- Access or Improved Road
- Planned Secondary Line
- Aerial Ignition
- Aerial Retardant Drop
- UAS Launch and Recovery Zone
- Fire area
- Coronado National Forest
- Bureau of Land Management
- County or Equivalent
- Communication\_Towers
- Overhead power
- Underground power
- Transmission Lines
- Trailhead
- Campground
- Wilderness
- Transportation**
- Highway or ramp
- Local connector
- Local or 4WD road
- Trail
- Arizona Trail

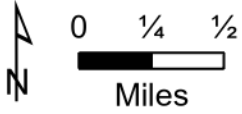


Bighorn  
AZ-CNF-000413  
7/2/2020 Day

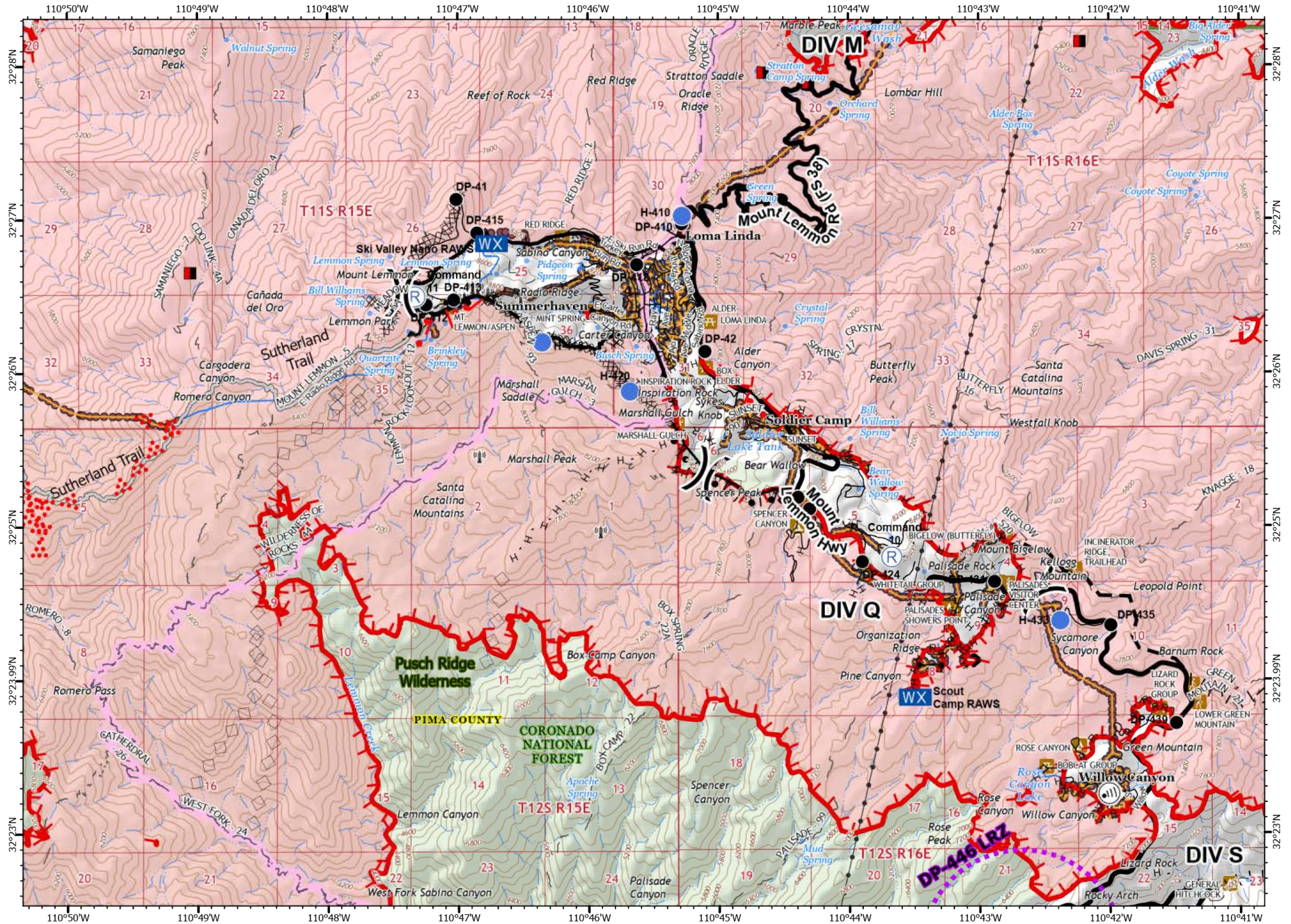
13	14	15	16
9	10	11	12
5	6	7	8
1	2	3	4

118,370 acres at 6/30/20 2040

Page 6



- Mines
- Uncontrolled Fire Edge
- Contained Line
- Completed Dozer Line
- Completed Hand Line
- Road as Completed Line
- Access or Improved Road
- Proposed Burnout
- Active Burnout
- Completed Burnout

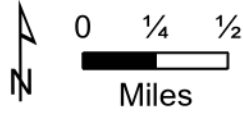


**Bighorn**  
**AZ-CNF-000413**  
**7/2/2020 Day**

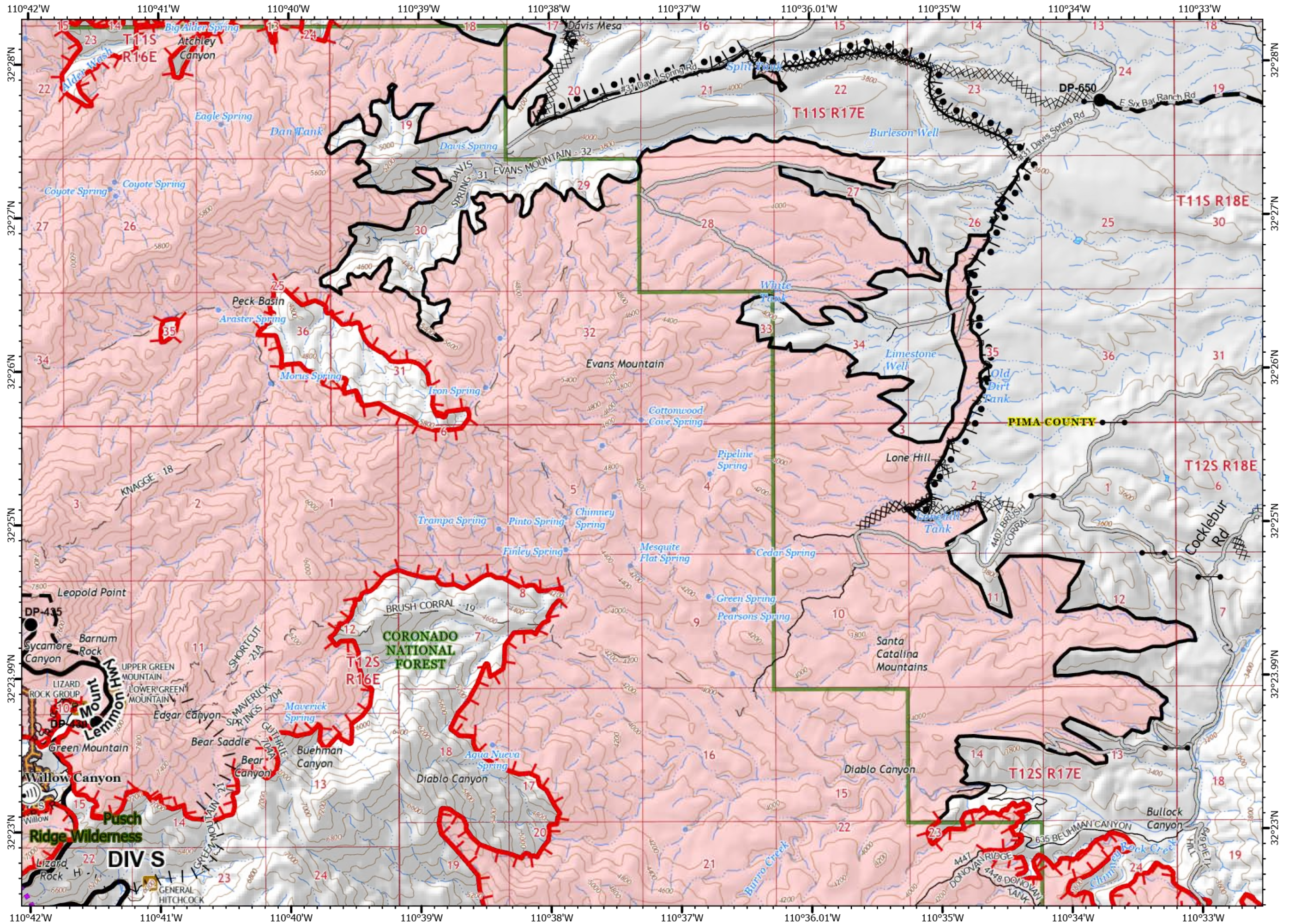
13	14	15	16
9	10	11	12
5	6	7	8
1	2	3	4

118,370 acres at 6/30/20 2040

**Page 7**



- Uncontrolled Fire Edge
  - Contained Line
  - Completed Dozer Line
  - Completed Hand Line
  - Road as Completed Line
  - Access or Improved Road
  - Proposed Burnout
  - Completed Burnout
  - Planned Fire Line
  - Aerial Retardant Drop
  - UAS Launch and Recovery Zone
  - Fire area
  - Coronado National Forest
  - County or Equivalent
- Utility Infrastructure**
- Overhead power
  - Underground power
  - Trailhead
  - Picnic Area
  - Campground
  - Wilderness
- Transportation**
- Local connector
  - Local or 4WD road
  - Trail

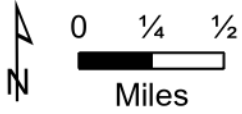


Bighorn  
AZ-CNF-000413  
7/2/2020 Day

13	14	15	16
9	10	11	12
5	6	7	8
1	2	3	4

118,370 acres at 6/30/20 2040

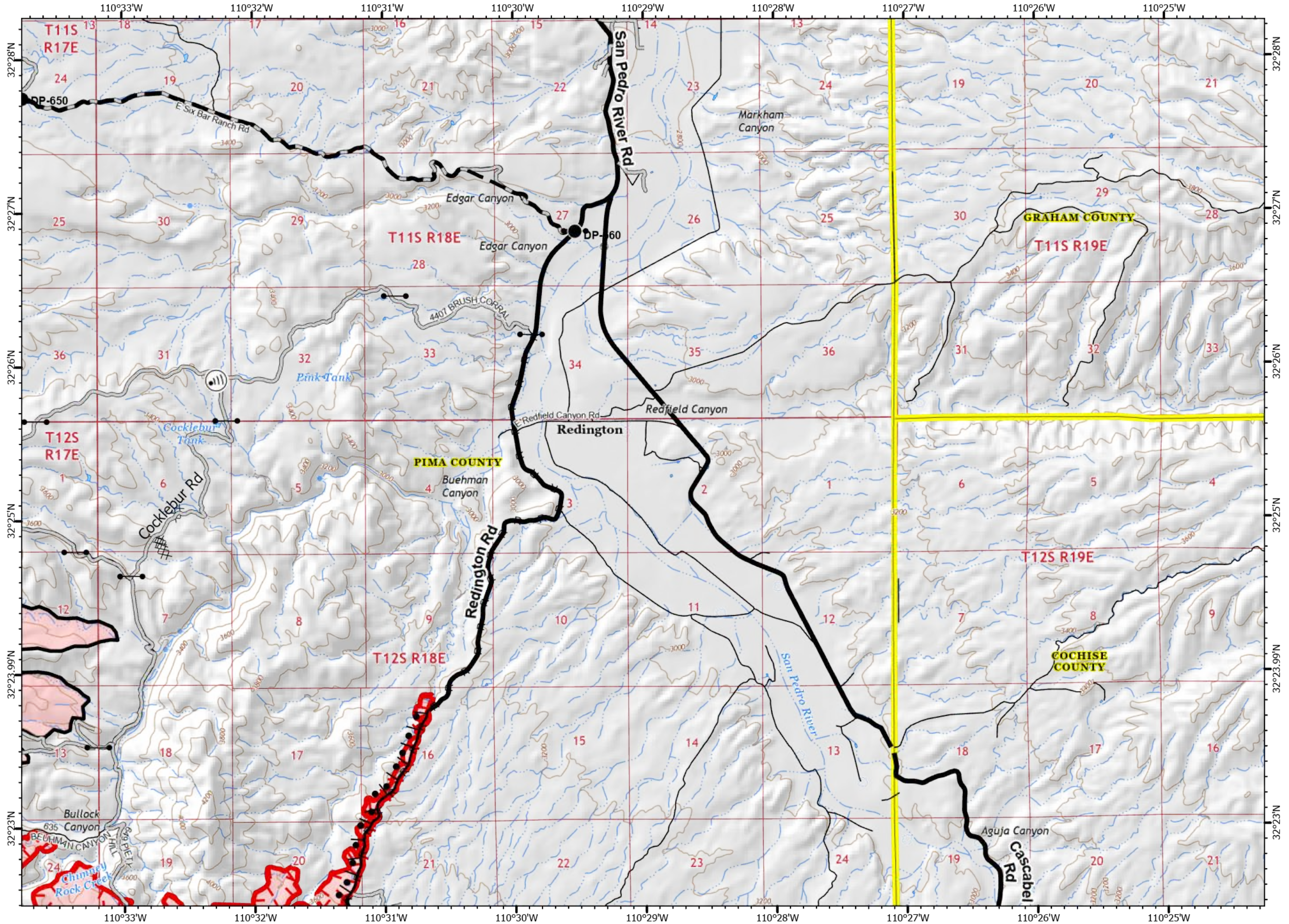
Page 8



- Uncontrolled Fire Edge
- Contained Line
- Completed Dozer Line
- Road as Completed Line
- Access or Improved Road
- Completed Burnout
- Planned Fire Line
- Fire area

- Boundary
- County or Equivalent

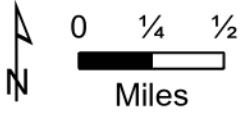
- Transportation
- Local connector
  - Local or 4WD road



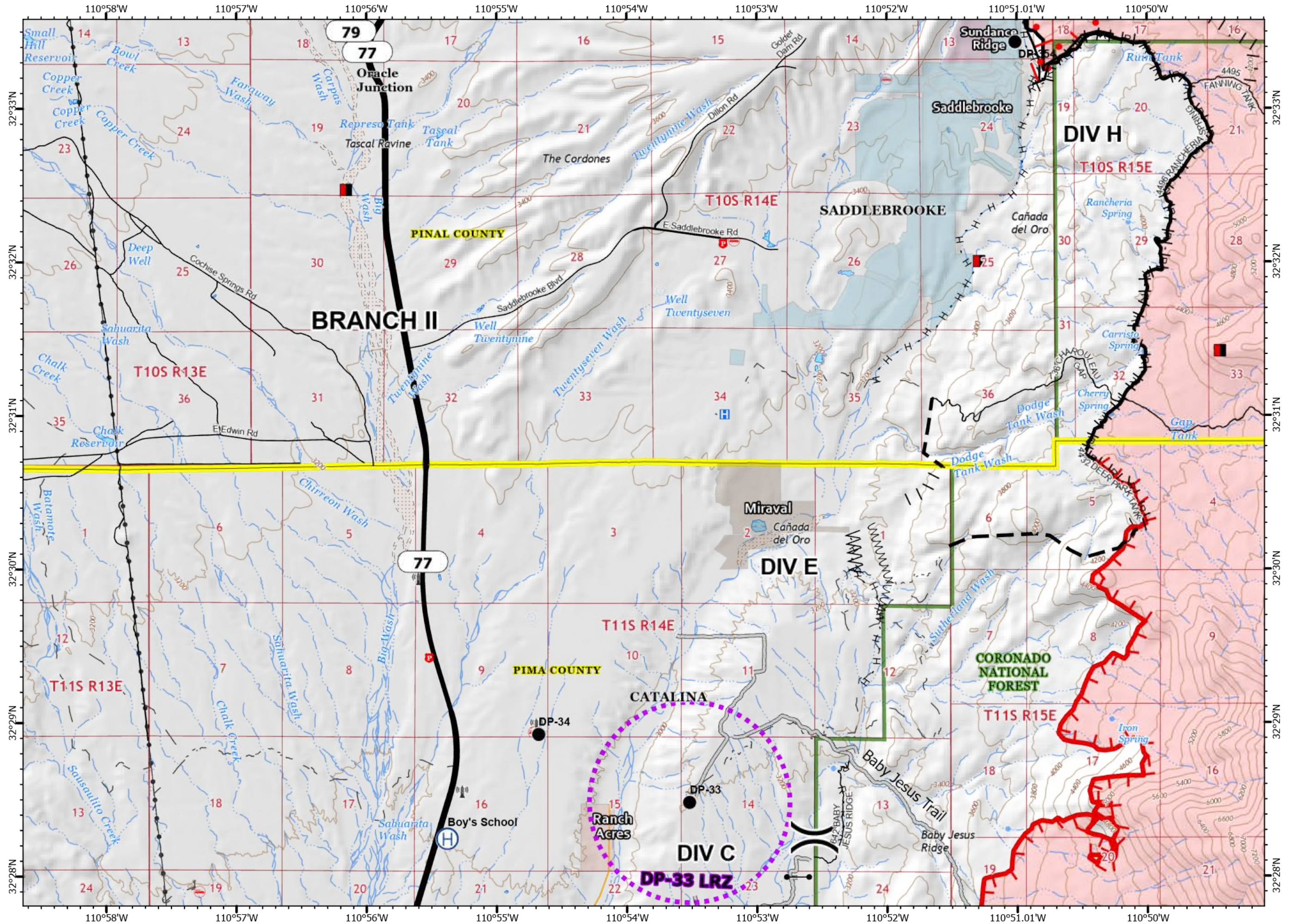


13	14	15	16
9	10	11	12
5	6	7	8
1	2	3	4

118,370 acres at 6/30/20 2040

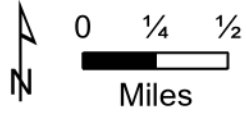


- Mines
- Uncontrolled Fire Edge
- Contained Line
- Completed Hand Line
- Road as Completed Line
- Access or Improved Road
- Line Break Completed
- Proposed Burnout
- Active Burnout

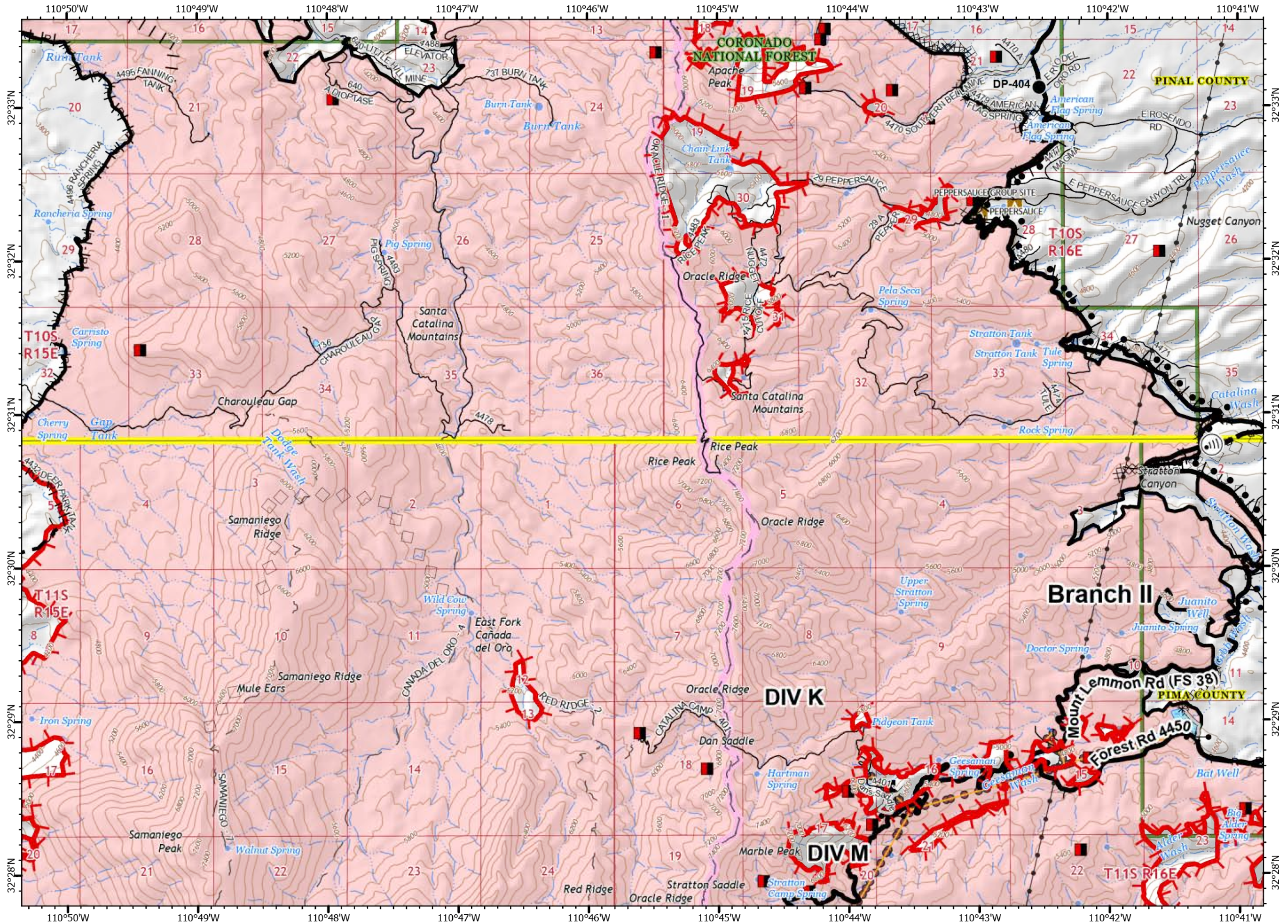


13	14	15	16
9	10	11	12
5	6	7	8
1	2	3	4

118,370 acres at 6/30/20 2040

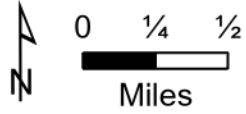


- Mines
  - Uncontrolled Fire Edge
  - Contained Line
  - Completed Dozer Line
  - Completed Hand Line
  - Road as Completed Line
  - Access or Improved Road
  - Proposed Burnout
  - Active Burnout
  - Completed Burnout
  - Planned Fire Line
  - Aerial Retardant Drop
  - Air Tanker Retardant
  - UAS Launch and Recovery Zone
  - Fire area
  - Coronado National Forest
  - County or Equivalent
- Utility Infrastructure**
- Overhead power
  - Underground power
  - Transmission Lines
  - Campground
- Transportation**
- Local connector
  - Local or 4WD road
  - Trail
  - Arizona Trail

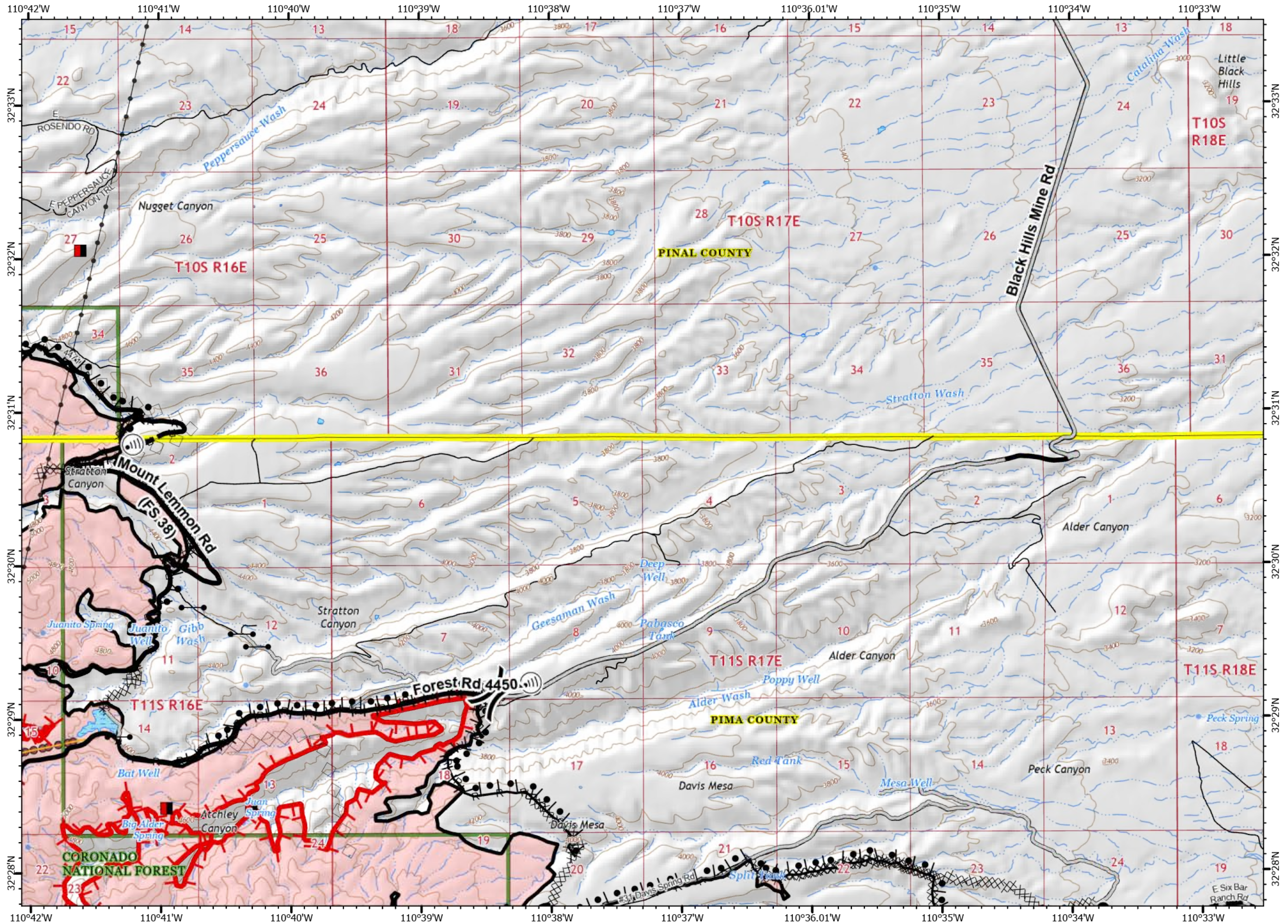


13	14	15	16
9	10	11	12
5	6	7	8
1	2	3	4

118,370 acres at 6/30/20 2040



- Mines
  - Uncontrolled Fire Edge
  - Contained Line
  - Completed Dozer Line
  - Road as Completed Line
  - Access or Improved Road
  - Proposed Burnout
  - Completed Burnout
  - Proposed Dozer Line
  - Planned Fire Line
  - Aerial Retardant Drop
  - Air Tanker Retardant
  - Fire area
  - Coronado National Forest
  - County or Equivalent
- Utility Infrastructure
- Overhead power
  - Transmission Lines
- Transportation
- Local connector
  - Local or 4WD road

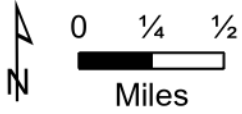


Bighorn  
AZ-CNF-000413  
7/2/2020 Day

13	14	15	16
9	10	11	12
5	6	7	8
1	2	3	4

118,370 acres at 6/30/20 2040

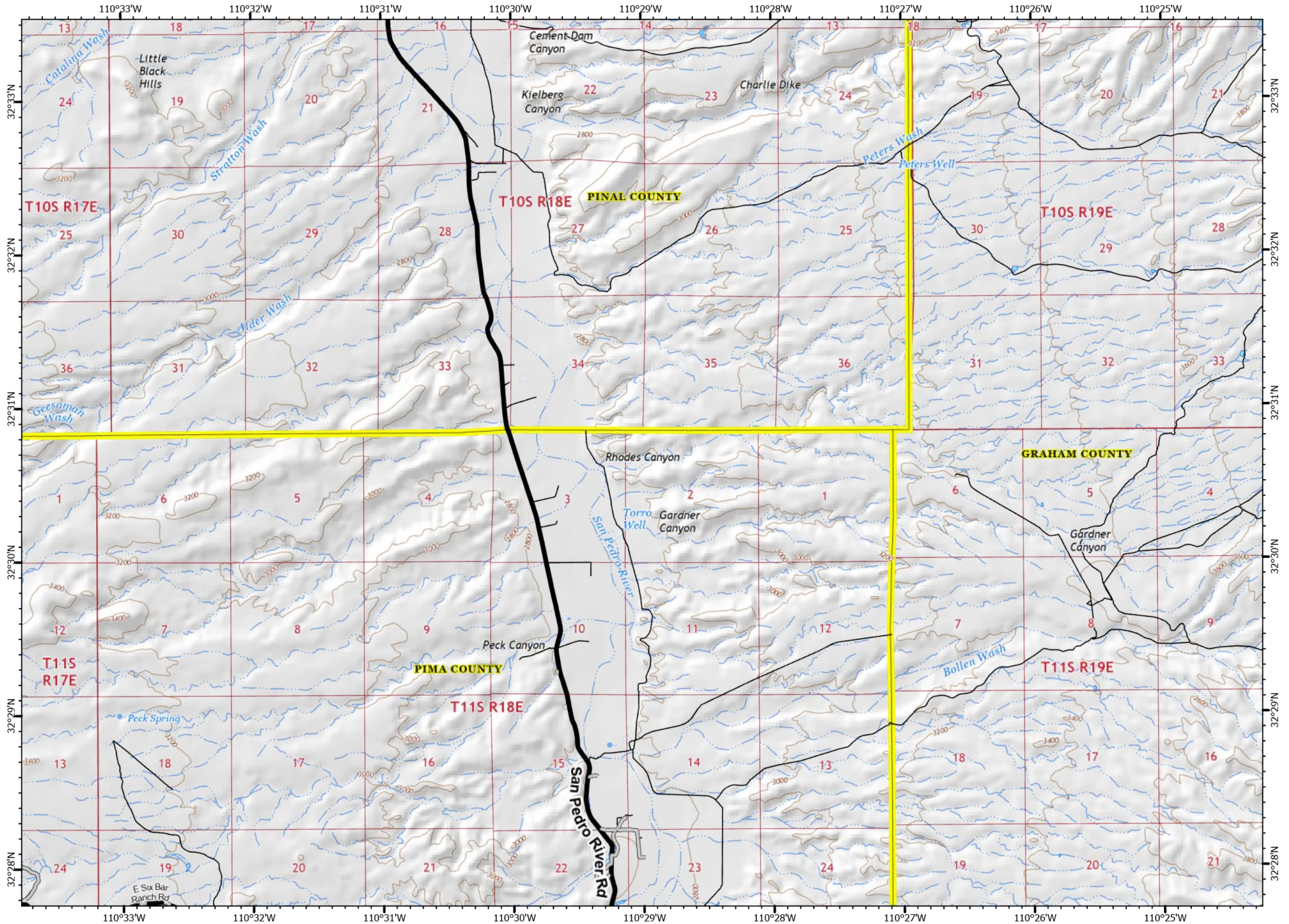
Page 12



- XX Completed Dozer Line
- Access or Improved Road
- Planned Fire Line

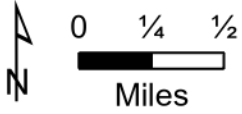
Boundary  
 County or Equivalent

Transportation  
 Local connector  
 Local or 4WD road

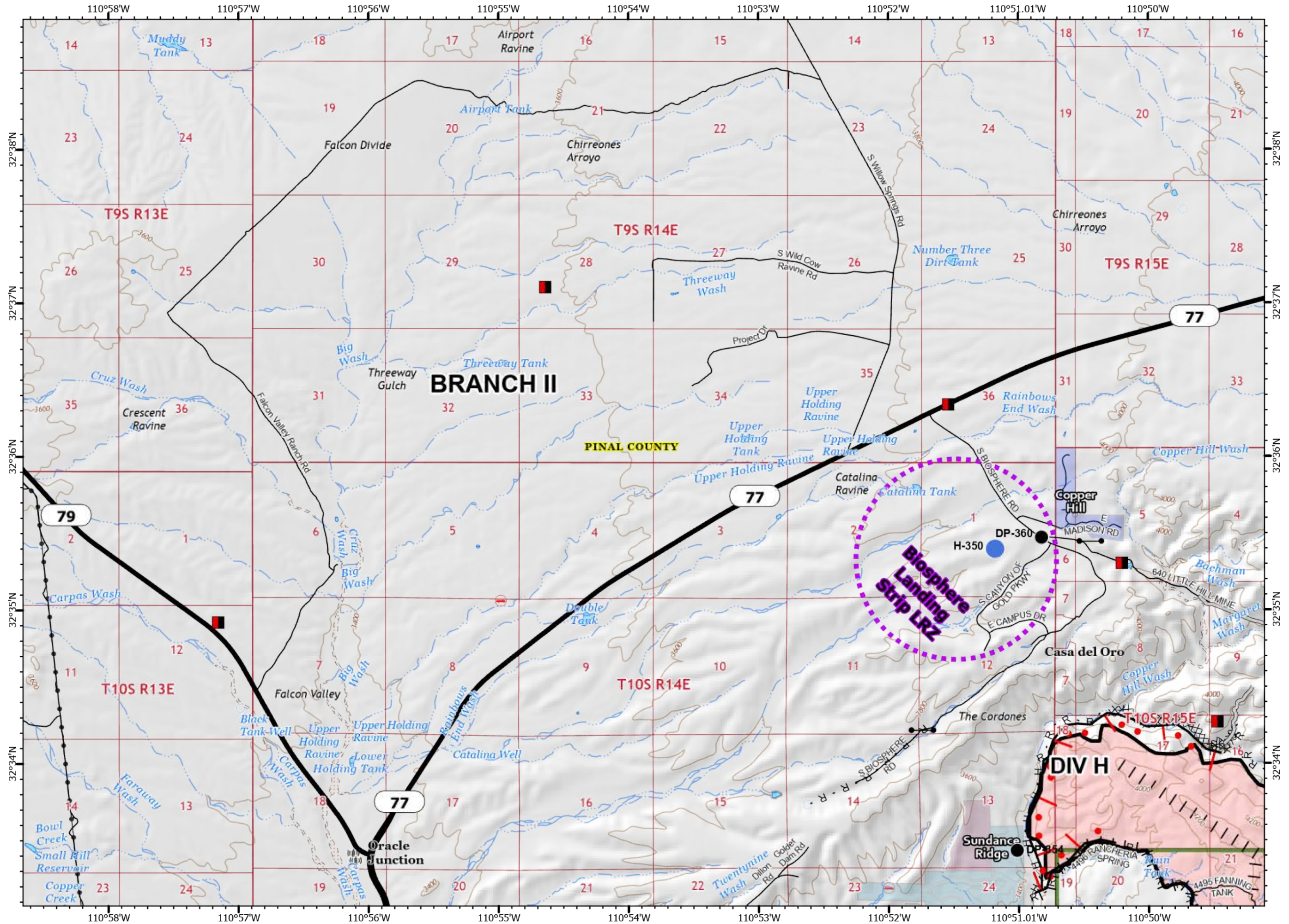


13	14	15	16
9	10	11	12
5	6	7	8
1	2	3	4

118,370 acres at 6/30/20 2040

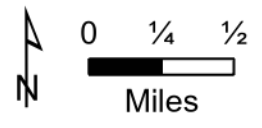


- Mines
  - Contained Line
  - Completed Dozer Line
  - Completed Hand Line
  - Road as Completed Line
  - Access or Improved Road
  - Proposed Burnout
  - Active Burnout
  - UAS Launch and Recovery Zone
  - Fire area
  - Coronado National Forest
  - County or Equivalent
  - Communication\_Towers
  - Transmission Lines
- Transportation
- Highway or ramp
  - Local or 4WD road

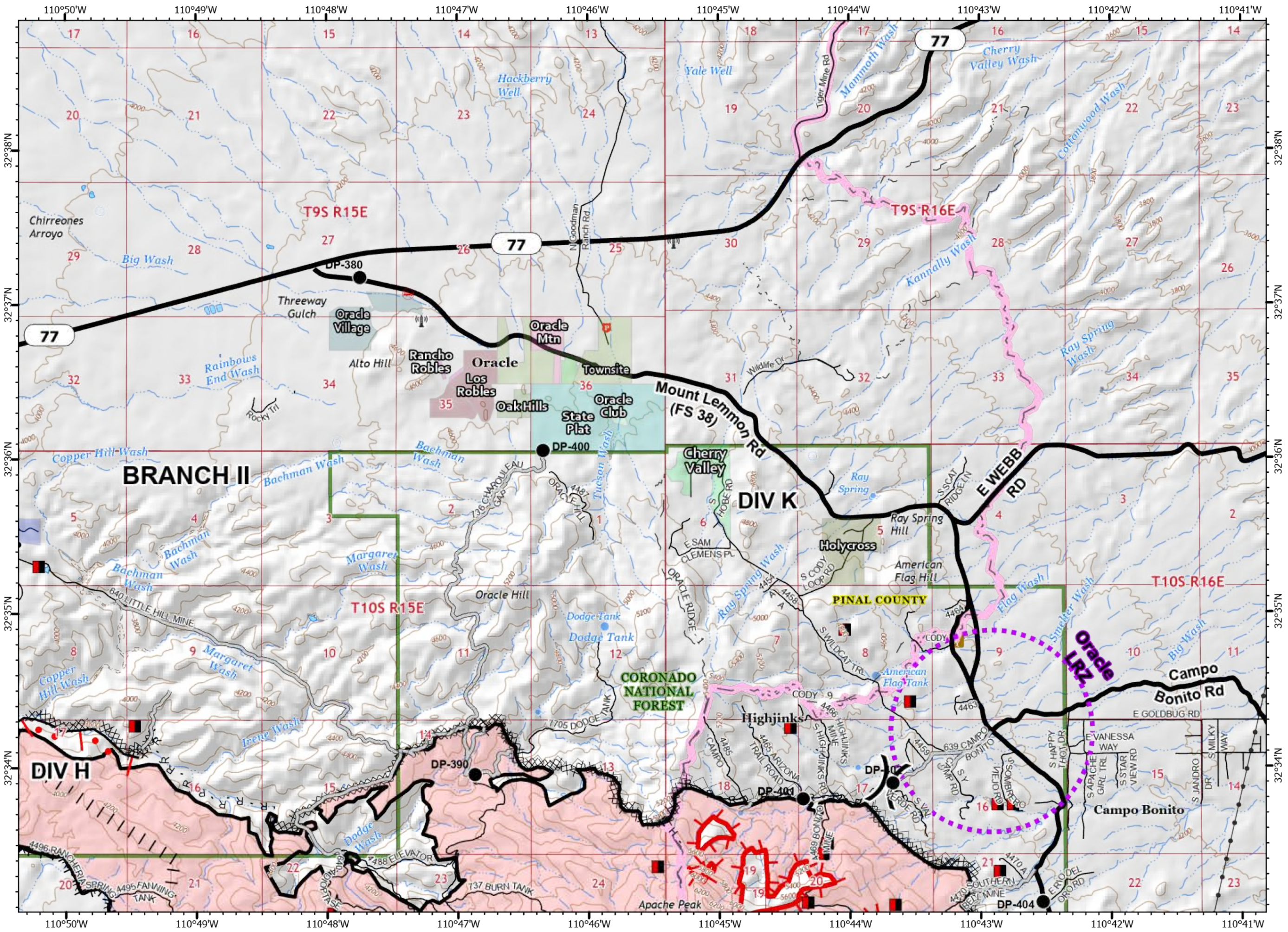


13	14	15	16
9	10	11	12
5	6	7	8
1	2	3	4

118,370 acres at 6/30/20 2040



- Mines
  - Uncontrolled Fire Edge
  - Contained Line
  - X Completed Dozer Line
  - H Completed Hand Line
  - Road as Completed Line
  - Access or Improved Road
  - Proposed Burnout
  - Active Burnout
  - ◇ Aerial Retardant Drop
  - ◇ Air Tanker Retardant
  - UAS Launch and Recovery Zone
  - Fire area
  - Coronado National Forest
  - County or Equivalent
  - Communication\_Towers
  - Transmission Lines
  - Trailhead
- Transportation**
- Highway or ramp
  - Local connector
  - Local or 4WD road
  - - - Trail
  - Arizona Trail

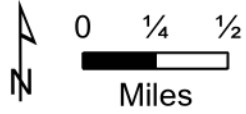


Bighorn  
AZ-CNF-000413  
7/2/2020 Day

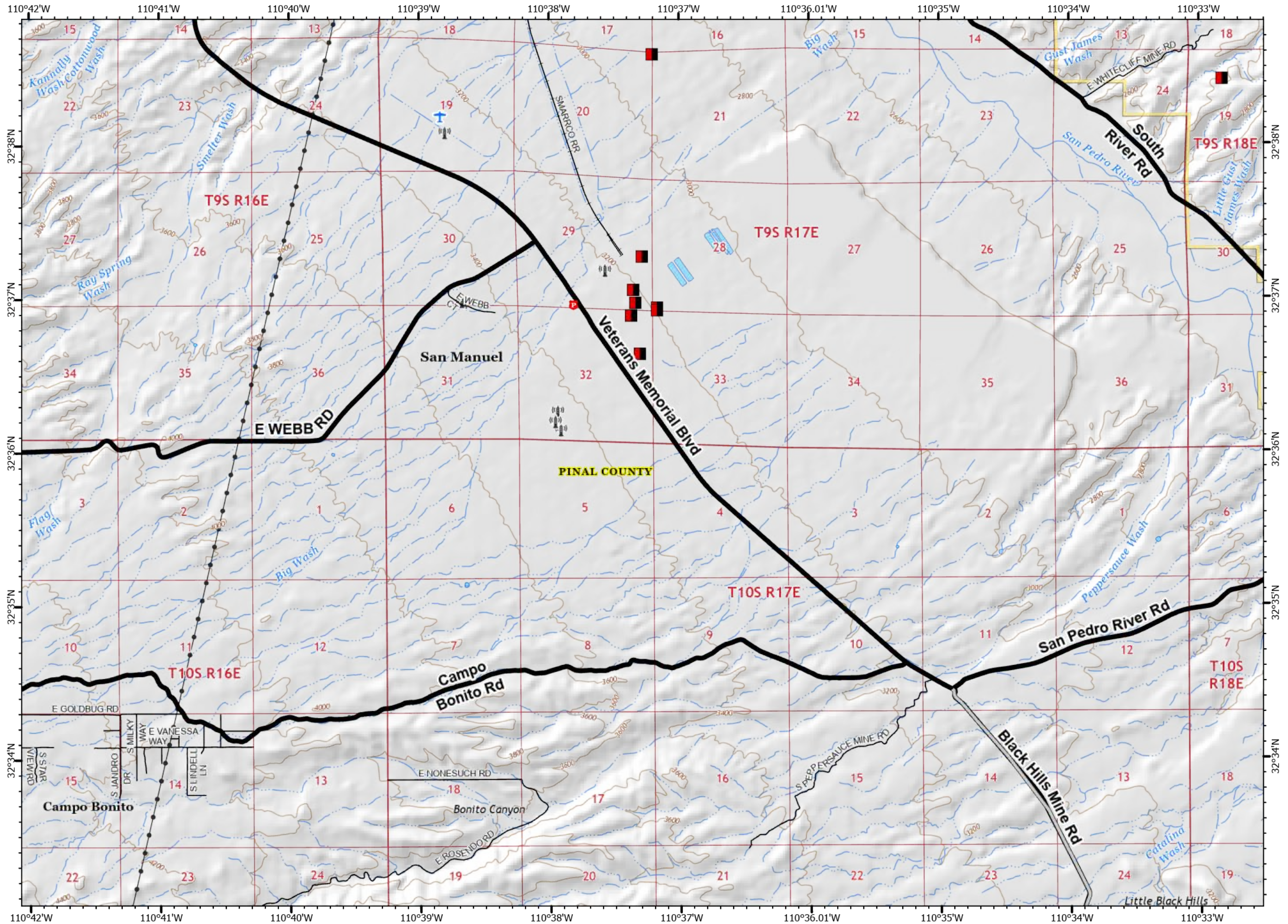
13	14	15	16
9	10	11	12
5	6	7	8
1	2	3	4

118,370 acres at 6/30/20 2040

Page 15



- Mines
  - Access or Improved Road
  - UAS Launch and Recovery Zone
  - Bureau of Land Management
  - County or Equivalent
  - Communication\_Towers
  - Transmission Lines
  - Airstrip
- Transportation
- Local connector
  - Local or 4WD road
  - RailRoad

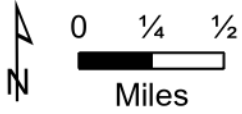


Bighorn  
AZ-CNF-000413  
7/2/2020 Day

13	14	15	16
9	10	11	12
5	6	7	8
1	2	3	4

118,370 acres at 6/30/20 2040

Page 16



- Mines
  - Access or Improved Road
  - Coronado National Forest
  - Bureau of Land Management
  - County or Equivalent
  - Wilderness
- Transportation**
- Local connector
  - Local or 4WD road
  - Trail

