

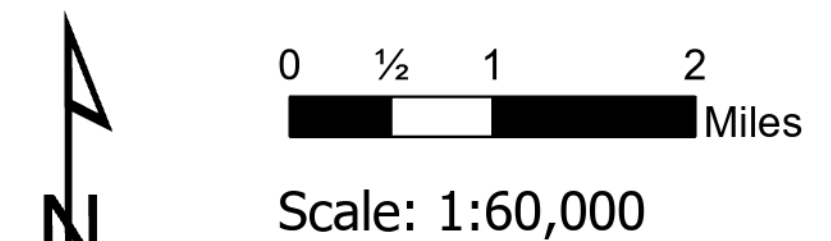
Air Ops

Bighorn

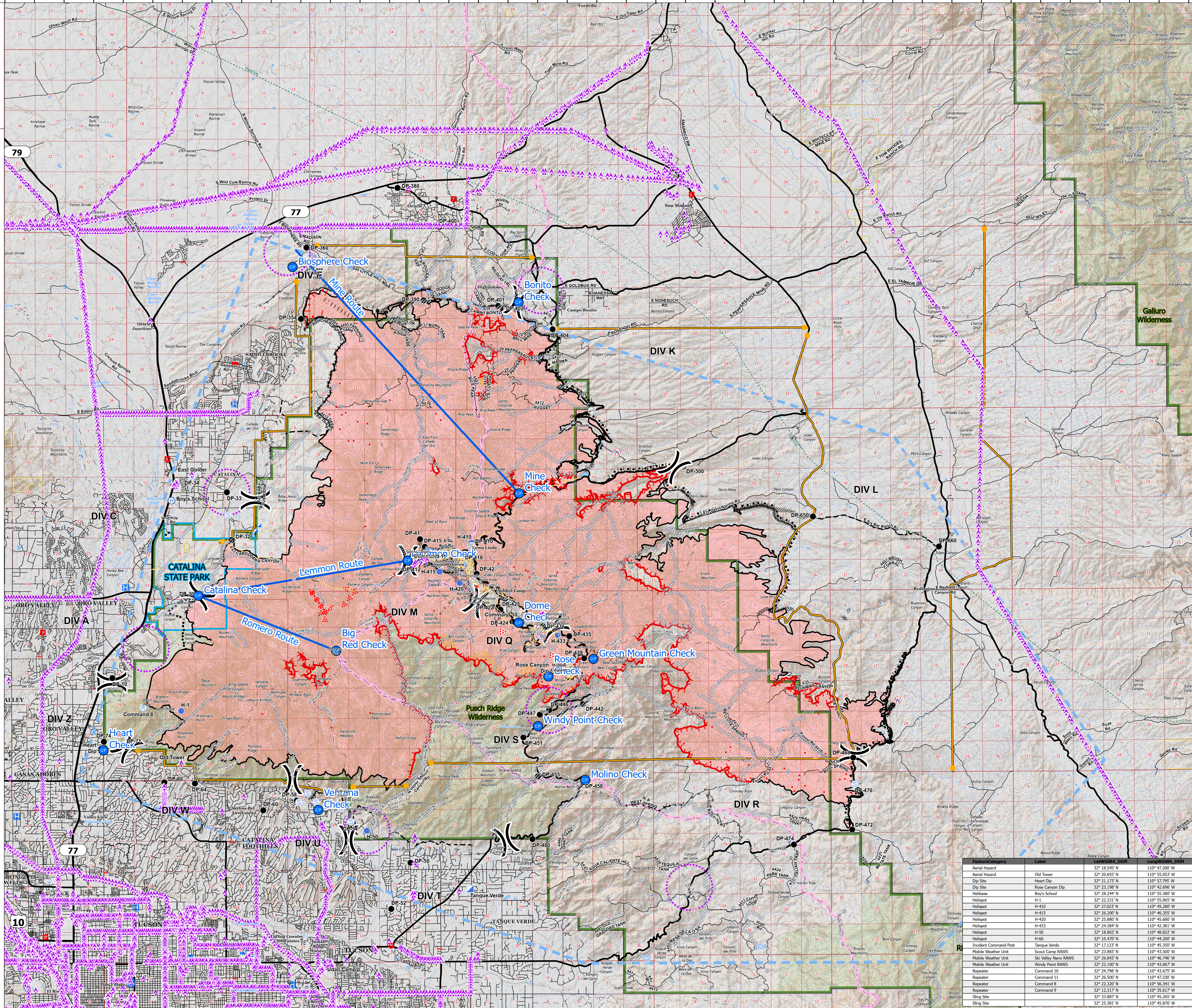
AZ-CNF-413

7/06/2020

118,804 acres at 7/2/20 2145



- IR Isolated Heat Source
- IR Scattered Heat
- ▲ Aerial Hazard
- Aerial Ignition
- Camp
- Dip Site
- Drop Point
- Fire Station
- Helibase
- Helispot
- Hot Spot
- Incident Command Post
- Internet Access
- Repeater
- Retardant in Avoidance Area
- Sling Site
- Spot Fire
- Staging Area
- Restricted Water Source
- Water Development or Draft Site
-) Division Break
- Aerial Hazard
- Uncontrolled Fire Edge
- Contained Line
- Completed Dozer Line
- Completed Hand Line
- Road as Completed Line
- Line Break Completed
- Proposed Burnout
- Active Burnout
- Completed Burnout
- Proposed Dozer Line
- Fire Break Planned or Incomplete
- Planned Fire Line
- Planned Secondary Line
- Aerial Ignition
- Temporary Flight Restriction
- UAS Launch and Recovery Zone
- Management Action Point
- Hospital
- Fire Station
- Law Enforcement
- Pipeline
- Transportation**
- Controlled access
- Highway or ramp
- Local connector
- Local or 4WD road
- Street
- Tunnel
- Ferry
- Trail
- Railroad
- Catalina State Park
- Coronado National Forest
- Bureau of Land Management
- National Park Service
- Retardant Avoidance Area
- Wildfire Daily Fire Perimeter
- Wilderness
- TriCo Electric Equipment**
- Overhead
- Underground
- Transportation**
- Arizona Trail
- PilotCheckPoints
- PilotRoute



Feature/Category	Label	DDM	DDM
Aerial Hazard	Heart Tower	32° 18.545' N	110° 47.200' W
Aerial Hazard	Old Tower	32° 20.693' N	110° 55.053' W
Dip Site	Heart Dip	32° 21.173' N	110° 57.795' W
Dip Site	Rose Canyon Dip	32° 23.198' N	110° 42.696' W
Dip Site	Boy's School	32° 28.244' N	110° 55.380' W
Helibase	H-1	32° 22.231' N	110° 56.065' W
Helispot	H-410	32° 27.023' N	110° 45.280' W
Helispot	H-415	32° 26.200' N	110° 46.355' W
Helispot	H-420	32° 25.880' N	110° 45.680' W
Helispot	H-433	32° 24.384' N	110° 42.381' W
Helispot	H-50	32° 18.802' N	110° 48.822' W
Helispot	H-60	32° 10.470' N	110° 46.200' W
Incident Command Post	Tanque Verde	32° 17.137' N	110° 45.350' W
Mobile Weather Unit	Scout Camp RAWS	32° 23.883' N	110° 43.500' W
Mobile Weather Unit	Ski Valley Nano RAWS	32° 26.843' N	110° 46.740' W
Mobile Weather Unit	Windy Point RAWS	32° 22.100' N	110° 43.067' W
Repeater	Command 10	32° 24.798' N	110° 43.675' W
Repeater	Command 11	32° 26.500' N	110° 47.330' W
Repeater	Command 8	32° 22.320' N	110° 56.341' W
Repeater	Command 9	32° 12.317' N	110° 35.617' W
Sling Site	32° 33.881' N	110° 45.265' W	
Sling Site	32° 25.387' N	110° 45.876' W	



aseifert
7/5/2020 2007
Acres from IR
North American 1983 Datum, Lat/Long
Grid