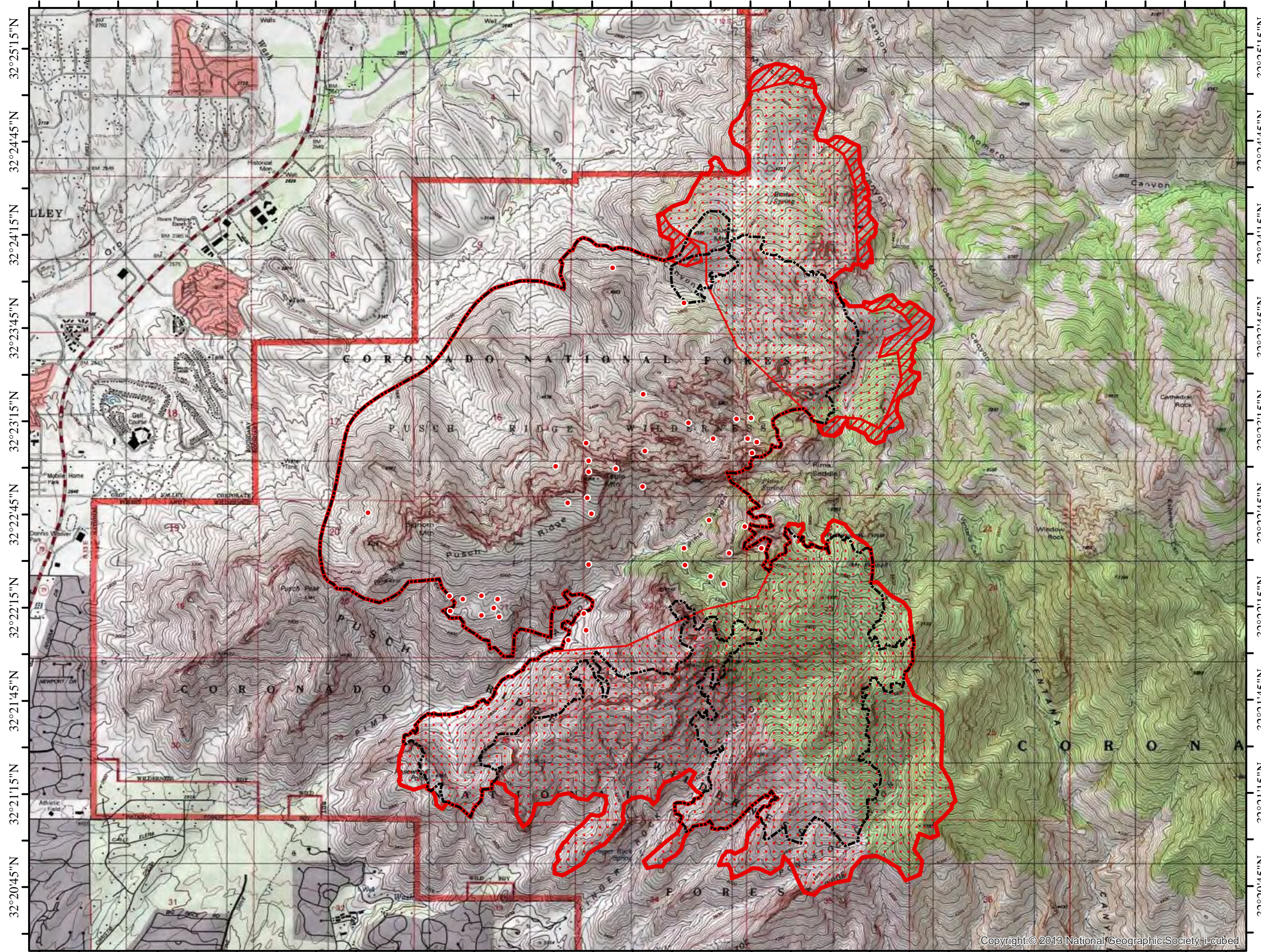


110°58'0"W 110°57'30"W 110°57'0"W 110°56'30"W 110°56'0"W 110°55'30"W 110°55'0"W 110°54'30"W 110°54'0"W 110°53'30"W 110°53'0"W 110°52'30"W 110°52'0"W 110°51'30"W 110°51'0"W 110°50'30"W

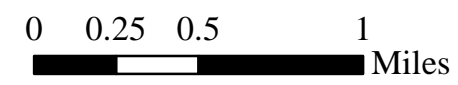


110°58'0"W 110°57'30"W 110°57'0"W 110°56'30"W 110°56'0"W 110°55'30"W 110°55'0"W 110°54'30"W 110°54'0"W 110°53'30"W 110°53'0"W 110°52'30"W 110°52'0"W 110°51'30"W 110°51'0"W 110°50'30"W

INFRARED MAP
BIGHORN
 AZ-CNF-000413
 Interpreted (IR) Acres: 7,092
 June 11, 2020 @ 2237 MST



- Isolated Heat
- GIS Perimeter (6/11/20)
- Heat Perimeter
- Intense Heat
- Scattered Heat



IRIN: Cheron Ferland
Taos, NM
Nad 83 UTM Zone 12

Copyright © 2013 National Geographic Society, i-cubed