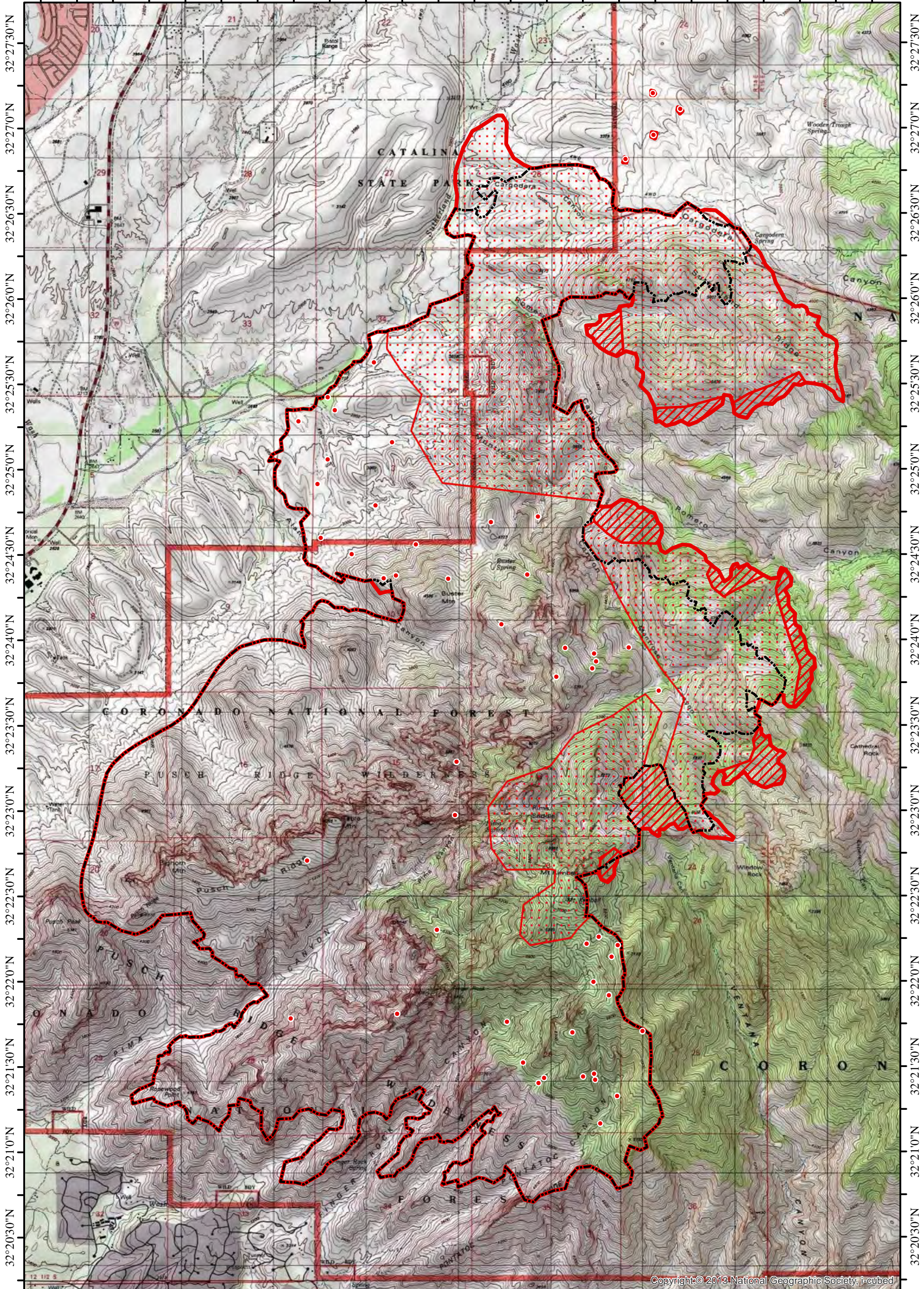
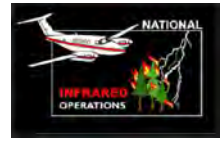


110°56'15"W 110°55'45"W 110°55'15"W 110°54'45"W 110°54'15"W 110°53'45"W 110°53'15"W 110°52'45"W 110°52'15"W 110°51'45"W 110°51'15"W 110°50'45"W

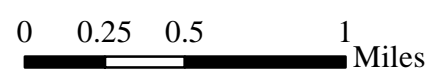


110°56'15"W 110°55'45"W 110°55'15"W 110°54'45"W 110°54'15"W 110°53'45"W 110°53'15"W 110°52'45"W 110°52'15"W 110°51'45"W 110°51'15"W 110°50'45"W

**INFRARED MAP**  
**BIGHORN**  
 AZ-CNF-000413  
 Interpreted (IR) Acres: 12,345  
 June 13, 2020 @ 2132 MST



- Isolated Heat
- ▨ Intense Heat
- GIS Perimeter
- ▨ Scattered Heat
- Heat Perimeter



*IRIN: Cheron Ferland*  
 Taos, NM  
 Nad 83 UTM Zone 12

Copyright © 2013 National Geographic Society, i-cubed