


111°00'W 110°59'0"W 110°58'0"W 110°57'0"W 110°56'0"W 110°55'0"W 110°54'0"W 110°53'0"W 110°52'0"W 110°51'0"W 110°50'0"W 110°49'0"W 110°48'0"W 110°47'0"W 110°46'0"W 110°45'0"W 110°44'0"W 110°43'0"W 110°42'0"W 110°41'0"W 110°40'0"W 110°39'0"W 110°38'0"W 110°37'0"W 110°36'0"W 110°35'0"W 110°34'0"W 110°33'0"W 110°32'0"W 110°31'0"W 110°30'0"W 110°29'0"W 110°28'0"W 110°27'0"W


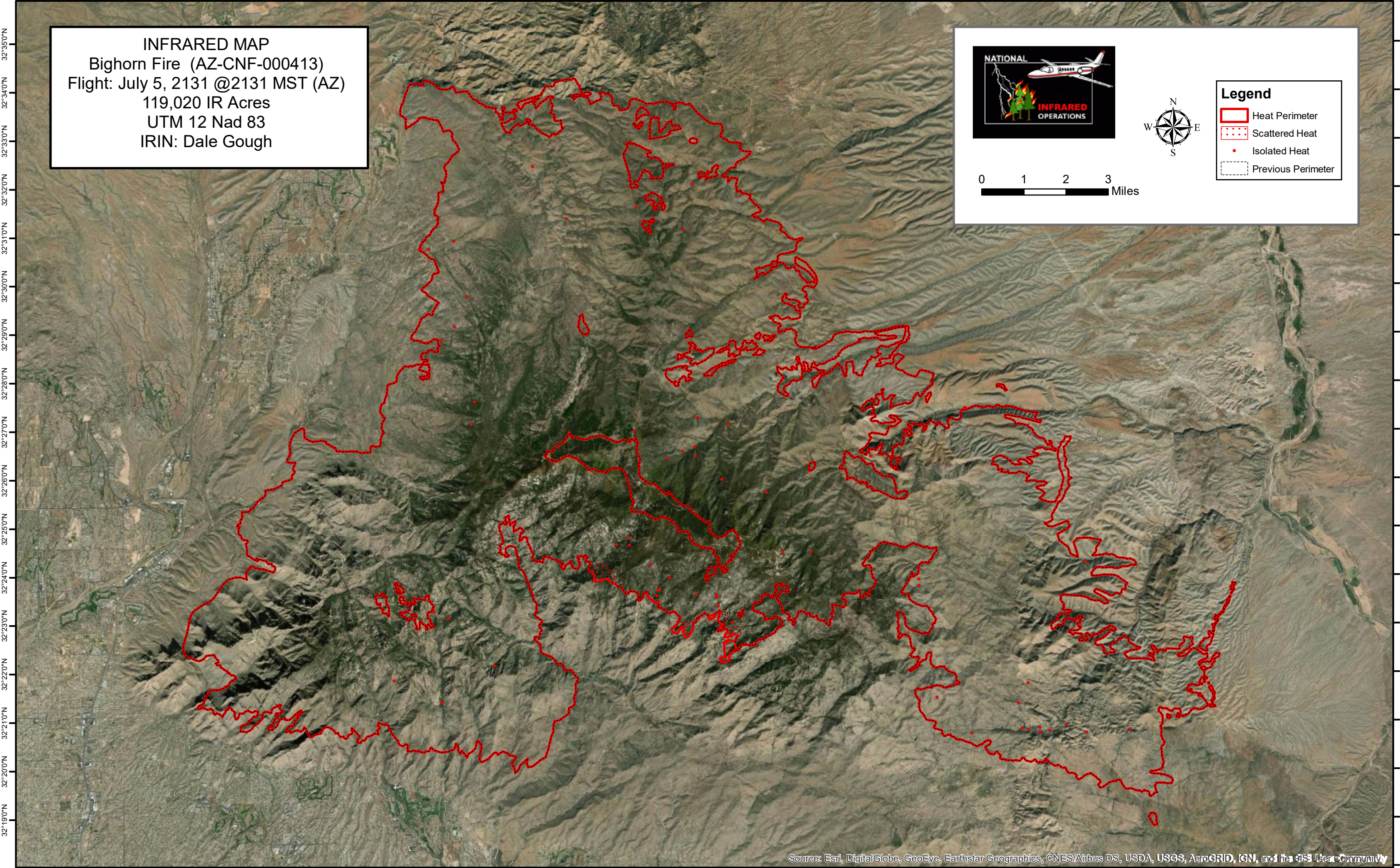
INFRARED MAP
Bighorn Fire (AZ-CNF-000413)
Flight: July 5, 2131 @2131 MST (AZ)
119,020 IR Acres
UTM 12 Nad 83
IRIN: Dale Gough



Legend

- Heat Perimeter
- Scattered Heat
- Isolated Heat
- Previous Perimeter

0 1 2 3 Miles

Source: Esri, DigitalGlobe, GeoEye, Earthstar Geographics, CNES/Airbus DS, USDA, USGS, AeroGRID, IGN, and the GIS User Community

111°00'W 110°59'0"W 110°58'0"W 110°57'0"W 110°56'0"W 110°55'0"W 110°54'0"W 110°53'0"W 110°52'0"W 110°51'0"W 110°50'0"W 110°49'0"W 110°48'0"W 110°47'0"W 110°46'0"W 110°45'0"W 110°44'0"W 110°43'0"W 110°42'0"W 110°41'0"W 110°40'0"W 110°39'0"W 110°38'0"W 110°37'0"W 110°36'0"W 110°35'0"W 110°34'0"W 110°33'0"W 110°32'0"W 110°31'0"W 110°30'0"W 110°29'0"W 110°28'0"W 110°27'0"W

32°35'0"N
32°34'0"N
32°33'0"N
32°32'0"N
32°31'0"N
32°30'0"N
32°29'0"N
32°28'0"N
32°27'0"N
32°26'0"N
32°25'0"N
32°24'0"N
32°23'0"N
32°22'0"N
32°21'0"N
32°20'0"N
32°19'0"N

32°35'0"N
32°34'0"N
32°33'0"N
32°32'0"N
32°31'0"N
32°30'0"N
32°29'0"N
32°28'0"N
32°27'0"N
32°26'0"N
32°25'0"N
32°24'0"N
32°23'0"N
32°22'0"N
32°21'0"N
32°20'0"N
32°19'0"N