

**Air Ops**  
**Blue River 2 and**  
**Valley**  
**AZSCA-002036**  
**AZSCA 002037**  
 20200716 day  
 Approx acres  
 Blue River 2 20,138  
 at 20200714 2052  
 Valley 28,509 at

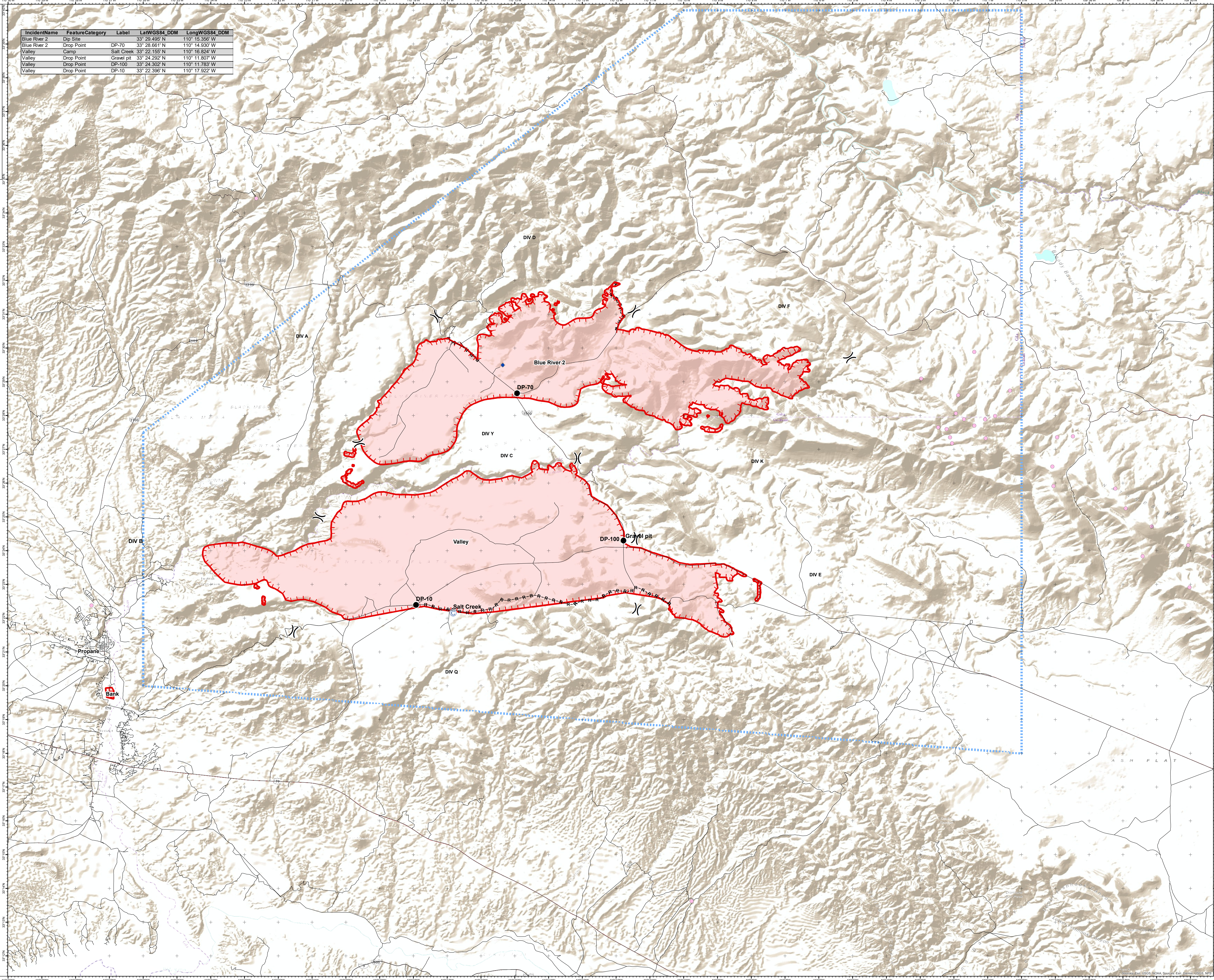
IncidentName	FeatureCategory	Label	LatWGS84_DDM	LongWGS84_DDM
Blue River 2	Dip Site		33° 29.495' N	110° 15.356' W
Blue River 2	Drop Point	DP-70	33° 28.661' N	110° 14.930' W
Valley	Camp	Salt Creek	33° 22.155' N	110° 16.824' W
Valley	Drop Point	Gravel pit	33° 24.302' N	110° 11.637' W
Valley	Drop Point	DP-100	33° 24.302' N	110° 11.783' W
Valley	Drop Point	DP-10	33° 22.396' N	110° 17.922' W



0 0.5 1  
Miles

**Legend**

- Com Site
- Previously used Helispot
- Roads
- Label Point
- Division Break
- Camp
- Dip Site
- Drop Point
- Uncontrolled Fire Edge
- Completed Hand Line
- Road as Completed Line
- Wildfire Daily Fire Perimeter
- TFR



zdriscoll  
 07-16-2020 0114 hrs  
 Acres from IR and field reports  
 WGS84 Lat/Long grid

Source: Esri, USGS, NOAA, Source: Esri, Garmin, USGS