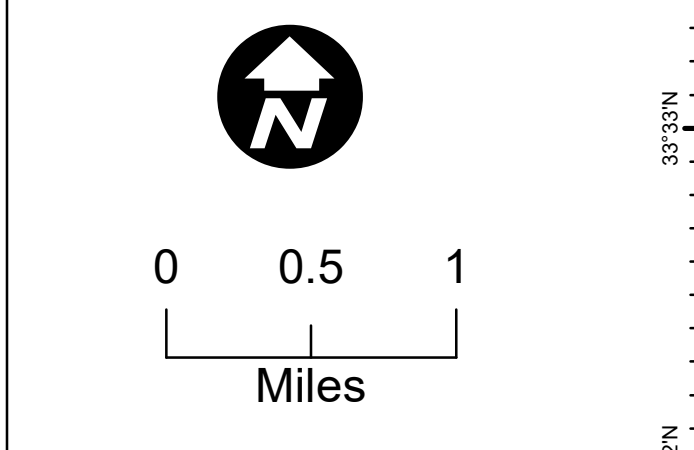
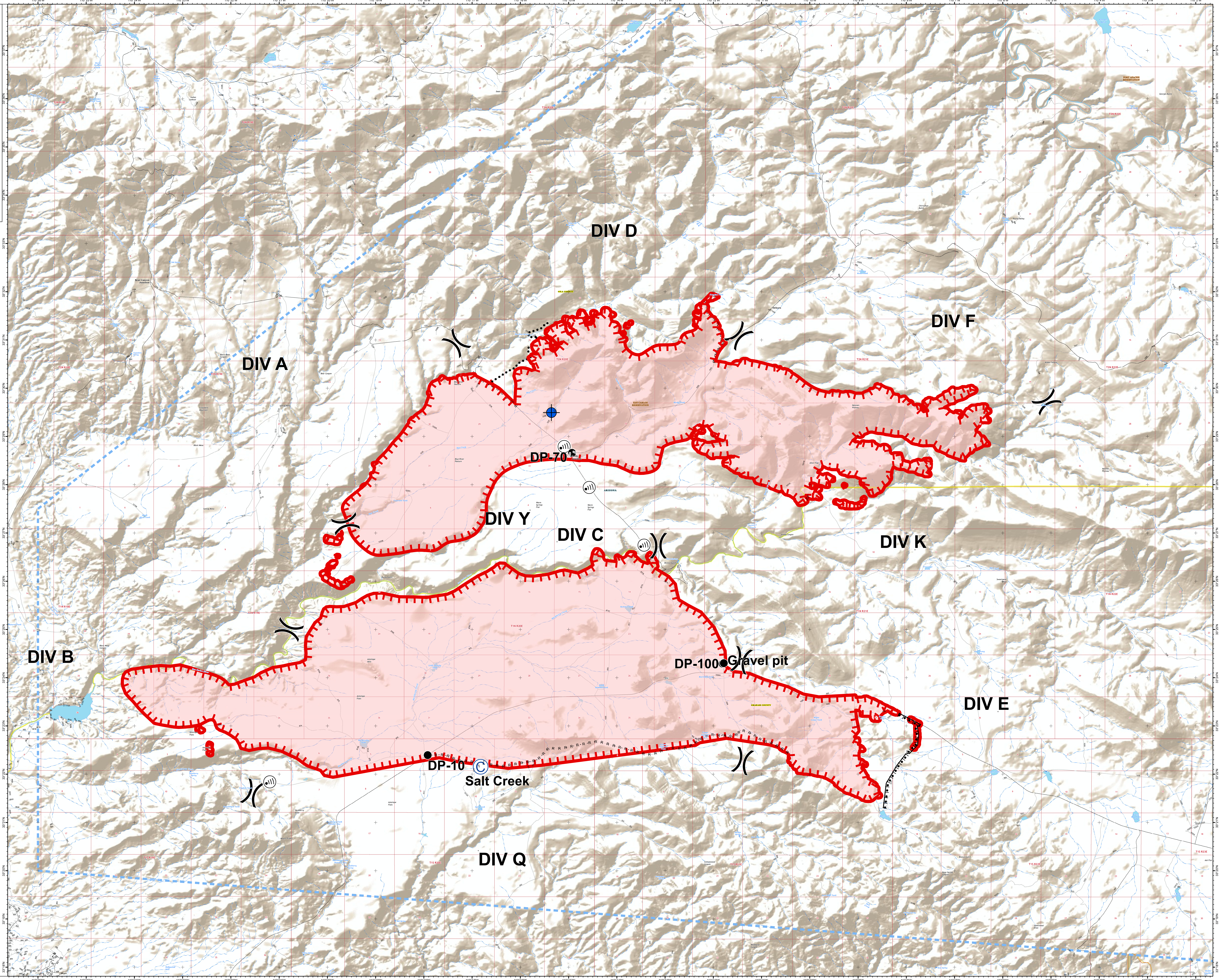


**Briefing**  
 Blue River 2 and  
 Valley Fires  
 AZSCA-002036  
 and AZSCA-  
 002037  
 07/16/2020 Day

Approx 27,348 ac  
 (Blue River 2)  
 and  
 16,179 ac (Valley)  
 at July 14, 2020 0930



- Legend**
- Useful Points
  - Label Point
  - Camp
  - Dip Site
  - Drop Point
  - Internet Access
  - Division Break
  - Uncontrolled Fire Edge
  - Temporary Fight Restriction
  - Completed Hand Line
  - Road as Completed Line
  - Completed Burnout
  - Planned Secondary Line
  - Wildfire Daily Fire Perimeter
  - Main Roads
  - Other Roads
  - Place Name
  - Spring
  - Waterfall
  - Well
  - Perennial Stream
  - Non-Perennial Stream
  - Earthen Dam
  - Perennial Lake
  - Intermittent Lake
  - Perennial Lake
  - Rapids
  - Lock Chamber, Spillway
  - Wash
  - State or Territory
  - County or Equivalent
  - Native American
  - Bureau of Land Management
  - Twin Ring
  - Section



SOUTHWEST AREA  
 INCIDENT  
 MANAGEMENT  
 TEAM 4

zdriscoll  
 07-16-2020 01:59 hrs  
 Acres from IR and field reports  
 WGS84 Lat/Long grid