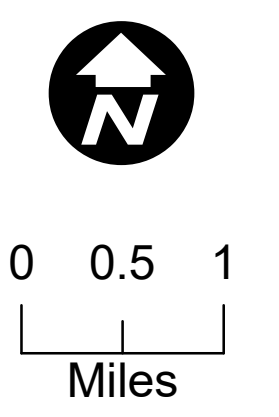


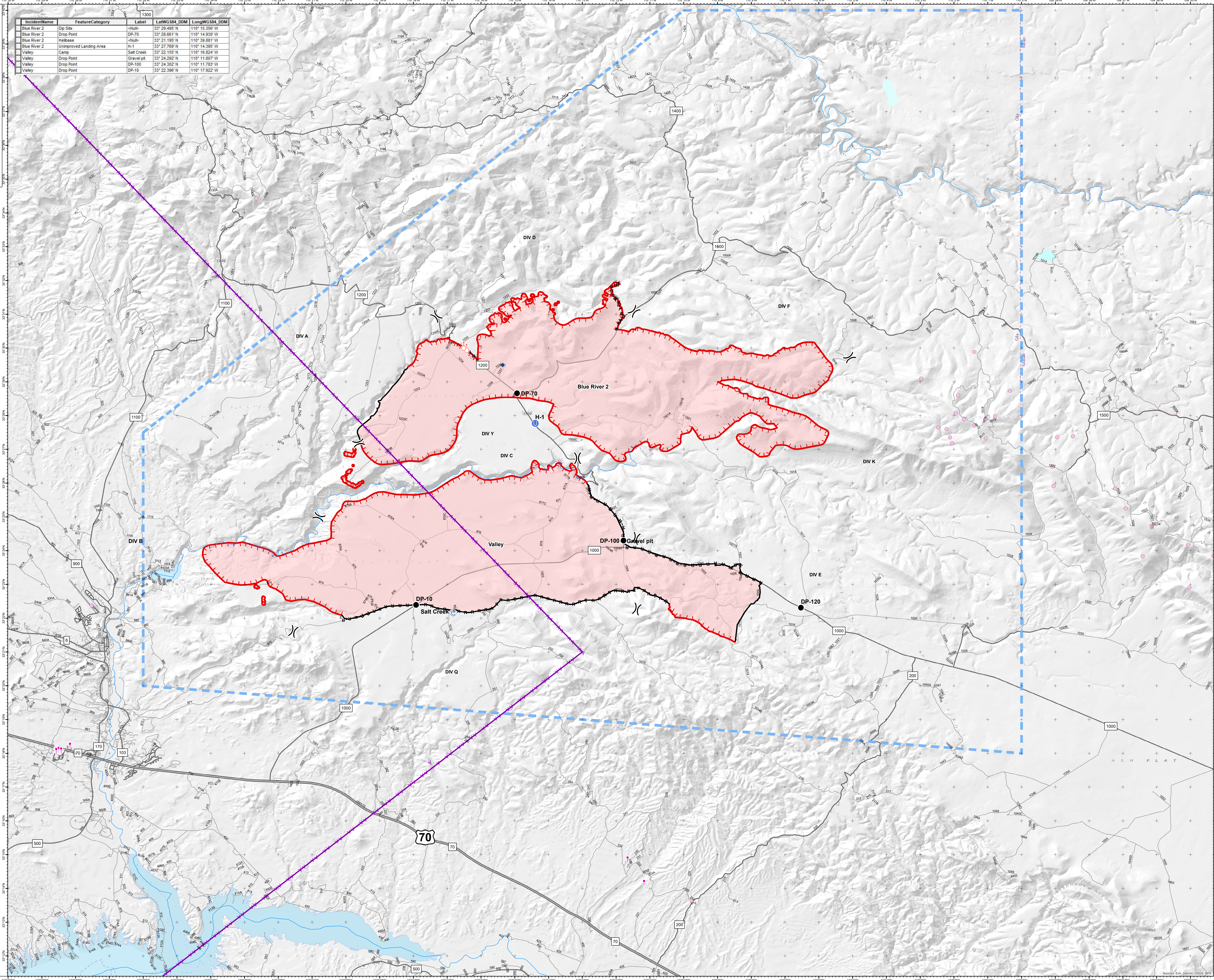
Air Ops
Blue River 2 and
Valley
AZSCA-002036
AZSCA 002037
 20200717 day
 Approx acres
 Blue River 2 26,600
 at 20200716 @1200
 Valley 28,959 at
 20200716 @1200

IncidentName	FeatureCategory	Label	LatWGS84_DDM	LongWGS84_DDM
Blue River 2	Op Site	<Null>	33° 29.495' N	110° 15.358' W
Blue River 2	Drop Point	DP-70	33° 28.661' N	110° 14.930' W
Blue River 2	Helibase	<Null>	33° 21.195' N	110° 39.881' W
Blue River 2	Unimproved Landing Area	H-1	33° 27.769' N	110° 14.395' W
Valley	Camp	Salt Creek	33° 22.155' N	110° 18.624' W
Valley	Drop Point	DP-100	33° 24.292' N	110° 11.907' W
Valley	Drop Point	DP-100	33° 24.302' N	110° 11.783' W
Valley	Drop Point	DP-10	33° 22.396' N	110° 17.922' W



Legend

- DVOF Ver/Destruction
- DAFIF_Militar...
- MTR Flight
- Com Site
- Previously used Helispot
- Rivers
- Division Break
- Camp
- Dip Site
- Drop Point
- Unimproved Landing Area
- Spot Fire
- Uncontrolled Fire Edge
- Contained Line
- H - H - H - H - Completed Hand Line
- R - R - R - R - Road as Completed Line
- Temporary Flight Restriction
- Wildfire Daily Fire Perimeter
- Highway
- Main Road
- Other Road
- Lakes



zdriscoll
 07-16-2020 2:52 hrs
 Acres from IR and field reports
 WGS84 Lat/Long grid