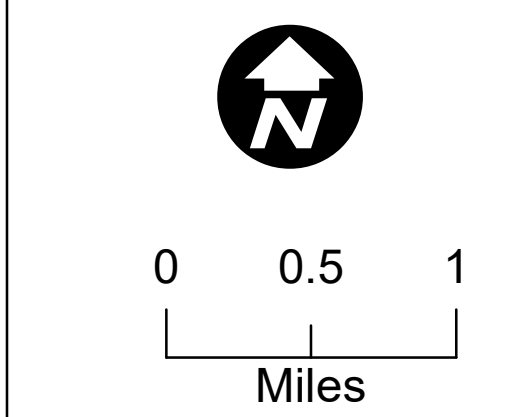


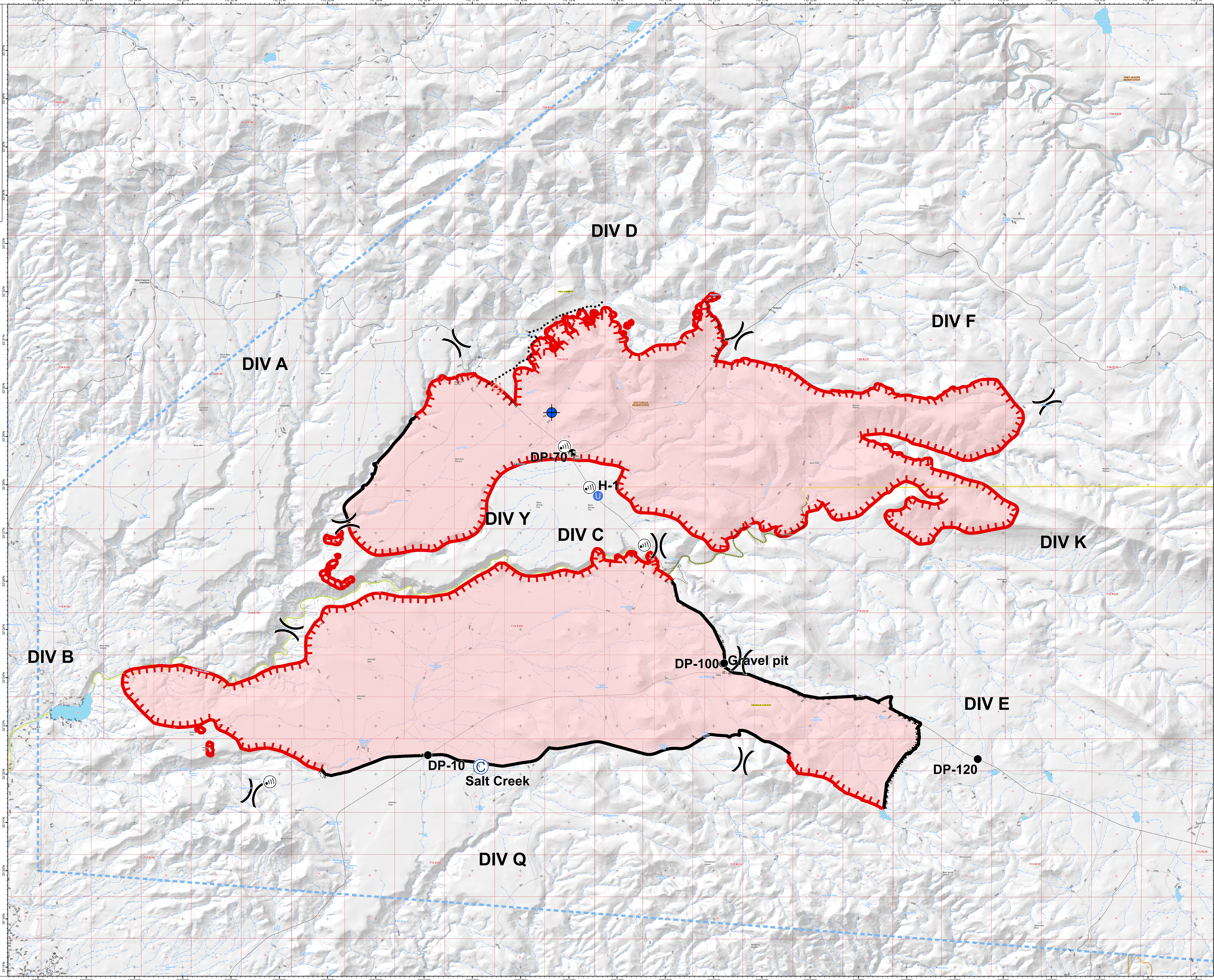
Briefing
 Blue River 2 and
 Valley Fires
 AZSCA-002036
 and AZSCA-
 002037
 07/17/2020 Day

Approx acres
 Blue River 2: 26,600
 at 20200716 1200
 Valley: 28,959
 at 20200716 1200



Legend

- Camp
- Dip Site
- Drop Point
- Unimproved Landing Area
- Internet Access
- Spot Fire
- Division Break
- Uncontrolled Fire Edge
- Temporary Flight Restriction
- Contained Line
- Completed Hand Line
- Road as Completed Line
- Completed Burnout
- Fire Break Planned or Incomplete
- Planned Secondary Line
- Wildfire Daily Fire Perimeter
- Main Roads
- Other Roads
- Place Name
- Spring
- Waterfall
- Well
- Perennial Stream
- Non-Perennial Stream
- Earthen Dam
- Perennial Lake
- Intermittent Lake
- Perennial Lake
- Rapids
- Lock Chamber, Spillway
- Wash
- State or Territory
- County or Equivalent
- Native American
- Bureau of Land Management
- Twin Ring
- Section



zdriscoll
 07-16-2020 2317 hrs
 Acres from IR and field reports
 WGS84 LatLong grid