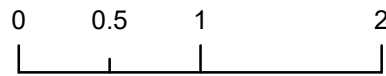


Incident Action Plan
Blue River 2 and Valley Fires
 AZSCA-002036 and 002037
 20200717 day

Page 1 of 7

Approx 26,600 ac (Blue River 2)
 and 28,959 ac (Valley Fire) GPS Flight at
 1200 July 16, 2020

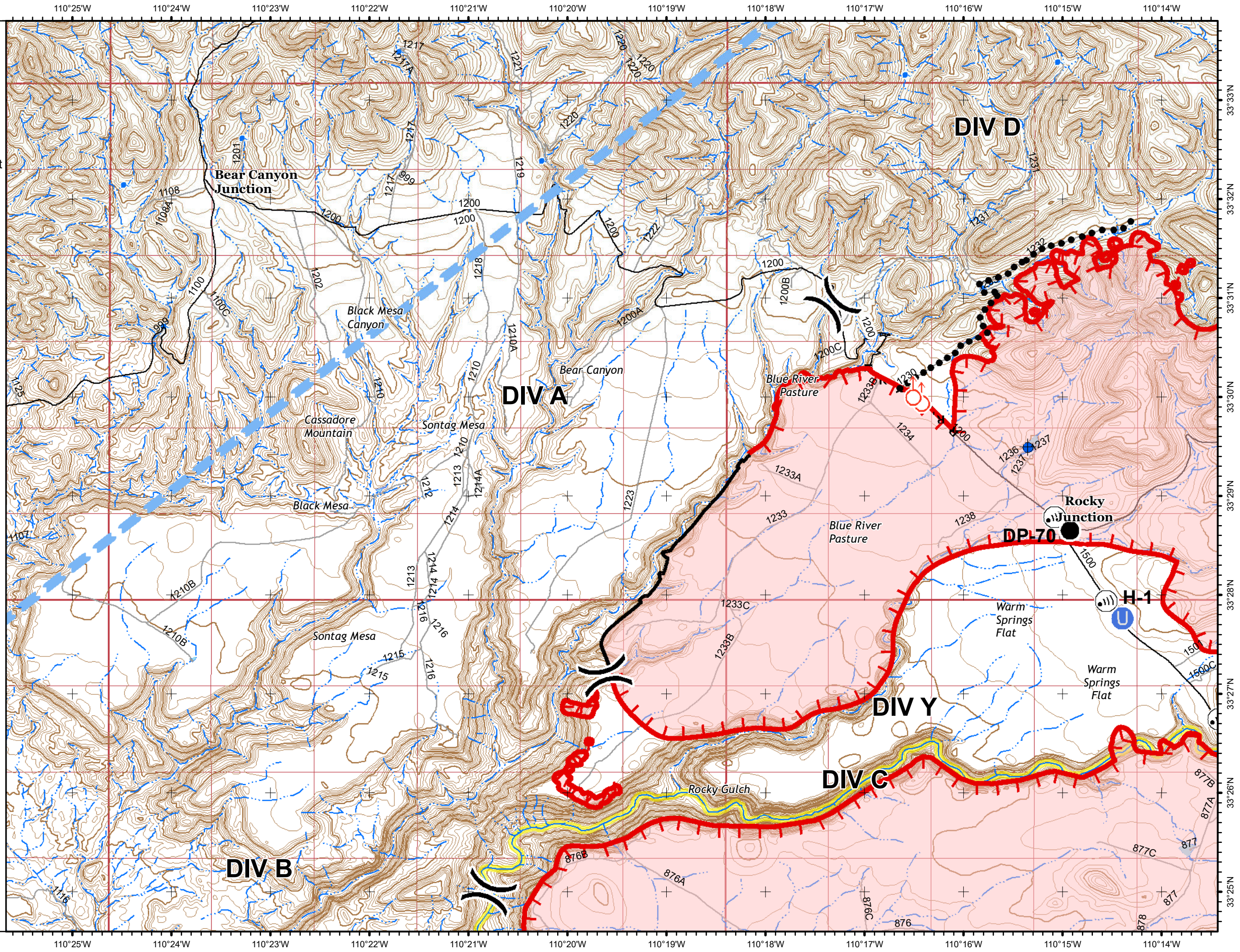


Miles
 1:67,133

- Dip Site
- Drop Point
- Unimproved Landing Area
- Internet Access
- Spot Fire
- Division Break
- Uncontrolled Fire Edge
- Contained Line
- Completed Hand Line
- Road as Completed Line
- Planned Secondary Line
- Temporary Flight Restriction
- Wildfire Daily Fire Perimeter
- Main Roads
- Other Roads
- Place Name
- Perennial Lake
- Intermittent Lake
- State or Territory
- County or Equivalent
- Native American
- Twin Ring
- Twin Ring Protracted
- Section
- Section Protracted



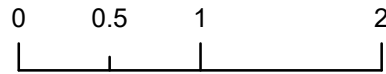
dlobinson
 07-16-2020 @ 2042 hrs
 Acres from IR and field reports
 WGS84 Lat/Long grid



Incident Action Plan
Blue River 2 and Valley Fires
AZSCA-002036 and 002037
 20200717 day

Page 2 of 7

Approx 26,600 ac (Blue River 2)
 and 28,959 ac (Valley Fire) GPS Flight at
 1200 July 16, 2020



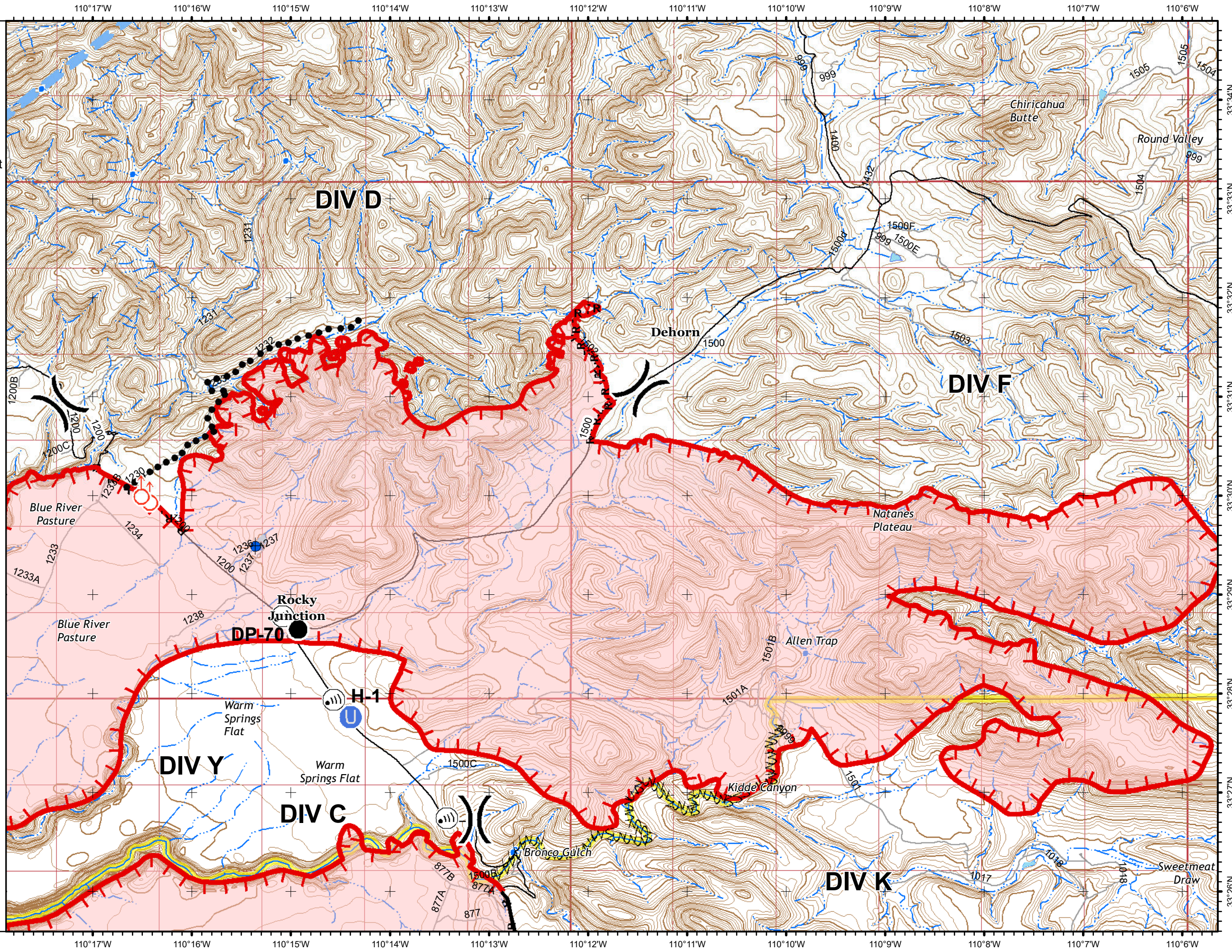
Miles

1:67,133

- Dip Site
- Drop Point
- Unimproved Landing Area
- Internet Access
- Spot Fire
- Division Break
- Uncontrolled Fire Edge
- Contained Line
- Completed Hand Line
- Road as Completed Line
- Fire Break Planned or Incomplete
- Planned Secondary Line
- Temporary Flight Restriction
- Wildfire Daily Fire Perimeter
- Main Roads
- Other Roads
- Place Name
- Perennial Lake
- Intermittent Lake



dlobinson
 07-16-2020 @ 2042 hrs
 Acres from IR and field reports
 WGS84 Lat/Long grid

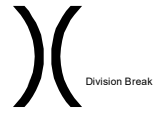
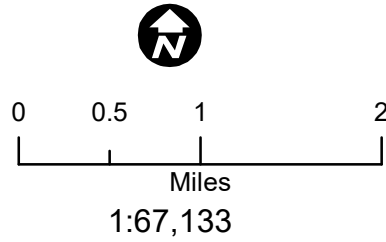


Incident Action Plan

Blue River 2 and Valley Fires
AZSCA-002036 and 002037
20200717 day

Page 3 of 7

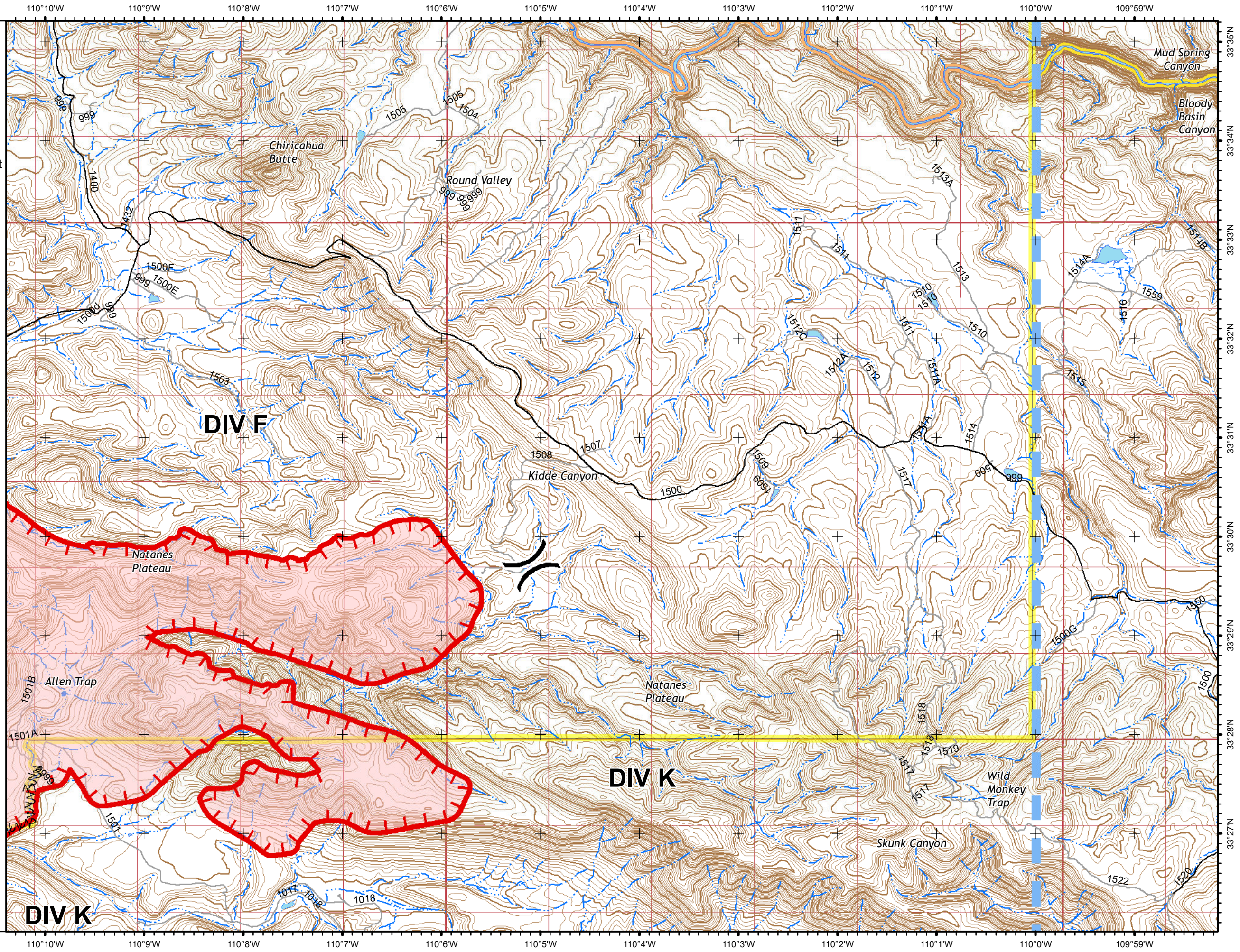
Approx 26,600 ac (Blue River 2)
and 28,959 ac (Valley Fire) GPS Flight at
1200 July 16, 2020



- Uncontrolled Fire Edge
- Fire Break Planned or Incomplete
- Temporary Flight Restriction
- Wildfire Daily Fire Perimeter
- Main Roads
- Other Roads
- Place Name
- Perennial Lake
- Intermittent Lake
- State or Territory
- County or Equivalent
- Native American
- Twin Ring
- Twin Ring Protracted
- Section
- Section Protracted



dlobinson
07-16-2020 @ 2043 hrs
Acres from IR and field reports
WGS84 Lat/Long grid



Incident Action Plan

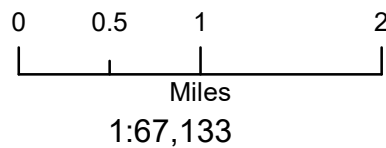
Blue River 2 and Valley Fires

AZSCA-002036 and 002037

20200717 day

Page 4 of 7

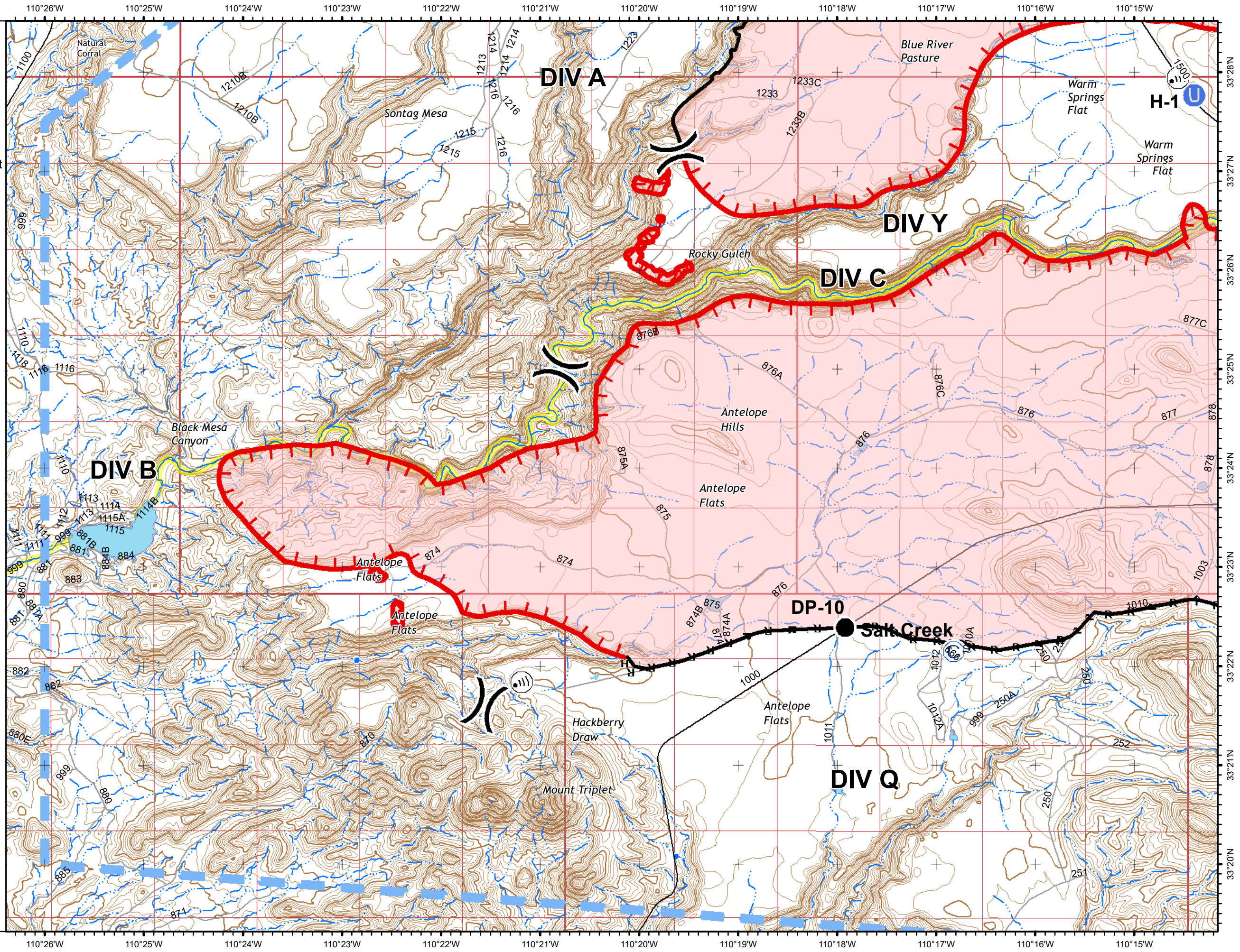
Approx 26,600 ac (Blue River 2)
and 28,959 ac (Valley Fire) GPS Flight at
1200 July 16, 2020



- Camp
- Drop Point
- Unimproved Landing Area
- Internet Access
- Division Break
- Uncontrolled Fire Edge
- Contained Line
- Completed Hand Line
- Road as Completed Line
- Temporary Flight Restriction
- Wildfire Daily Fire Perimeter
- Main Roads
- Other Roads
- Place Name
- Perennial Lake
- Intermittent Lake
- State or Territory
- County or Equivalent
- Native American
- Twin Ring
- Twin Ring Protracted
- Section



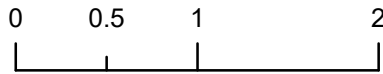
dlobinson
07-16-2020 @ 2044 hrs
Acres from IR and field reports
WGS84 Lat/Long grid



Incident Action Plan
 Blue River 2 and Valley Fires
 AZSCA-002036 and 002037
 20200717 day

Page 5 of 7

Approx 26,600 ac (Blue River 2)
 and 28,959 ac (Valley Fire) GPS Flight at
 1200 July 16, 2020



Miles
 1:67,133

- Camp
- Drop Point
- Unimproved Landing Area
- Internet Access
- Division Break
- Uncontrolled Fire Edge
- Contained Line
- Completed Hand Line
- Road as Completed Line
- Completed Burnout
- Fire Break Planned or Incomplete
- Wildfire Daily Fire Perimeter
- Main Roads
- Other Roads
- Place Name
- Perennial Lake
- Intermittent Lake
- State or Territory
- County or Equivalent

- Native American
- Twin Ring
- Twin Ring Protracted
- Section
- Section Protracted

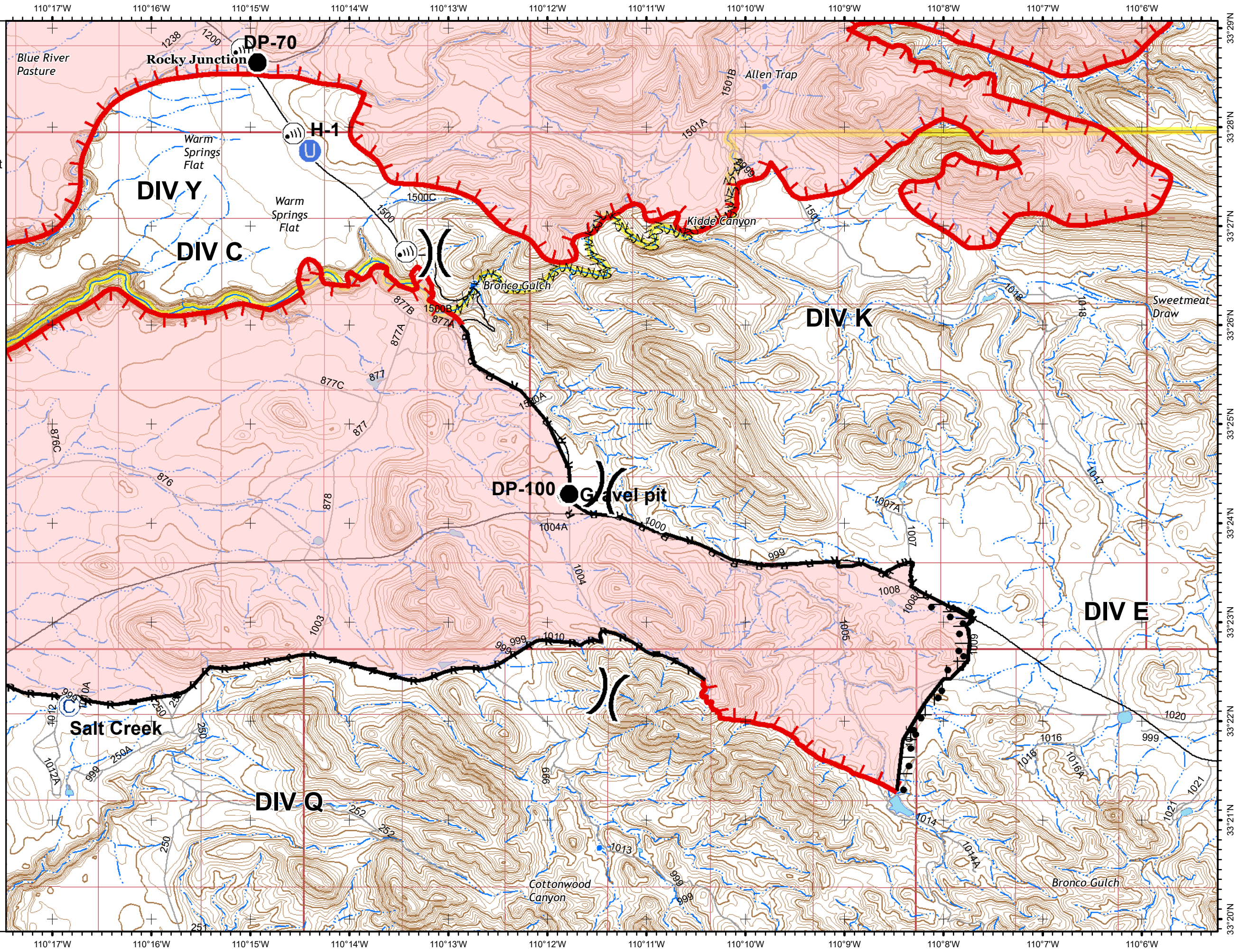
- Unimproved Landing Area
- Internet Access
- Division Break

- Uncontrolled Fire Edge
- Contained Line
- Completed Hand Line
- Road as Completed Line
- Completed Burnout
- Fire Break Planned or Incomplete

- Wildfire Daily Fire Perimeter
- Main Roads
- Other Roads
- Place Name
- Perennial Lake
- Intermittent Lake
- State or Territory
- County or Equivalent



dlobinson
 07-16-2020 @ 2044 hrs
 Acres from IR and field reports
 WGS84 Lat/Long grid



Incident Action Plan

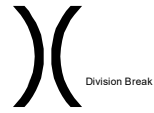
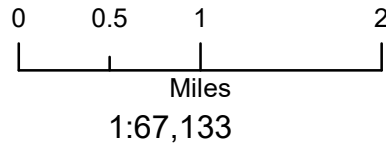
Blue River 2 and Valley Fires

AZSCA-002036 and 002037

20200717 day

Page 6 of 7

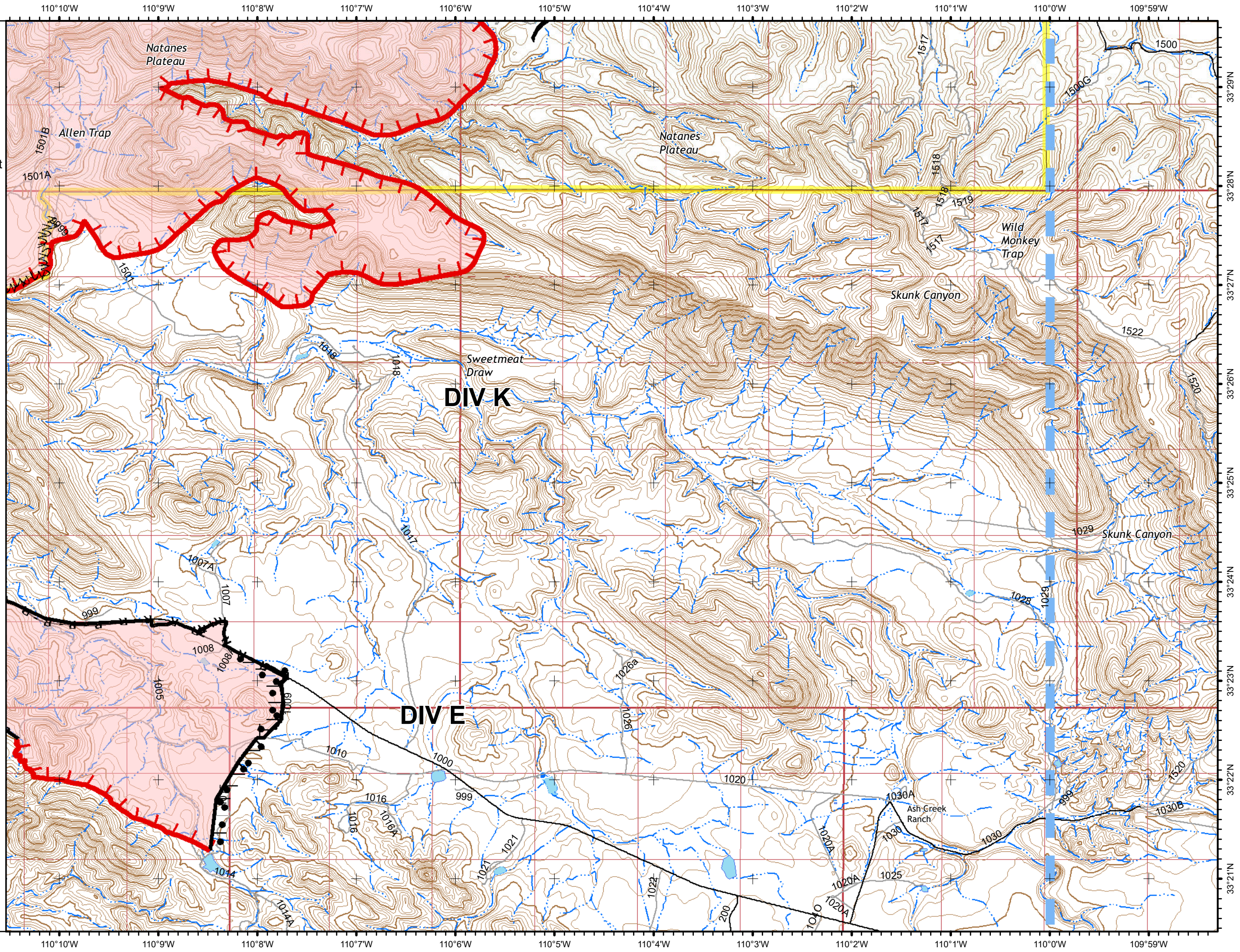
Approx 26,600 ac (Blue River 2)
and 28,959 ac (Valley Fire) GPS Flight at
1200 July 16, 2020



- Uncontrolled Fire Edge
- Contained Line
- Completed Hand Line
- Road as Completed Line
- Completed Burnout
- Fire Break Planned or Incomplete
- Temporary Flight Restriction
- Wildfire Daily Fire Perimeter
- Main Roads
- Other Roads
- Place Name
- Perennial Lake
- Intermittent Lake
- State or Territory
- County or Equivalent
- Native American
- Twin Ring
- Twin Ring Protracted
- Section
- Section Protracted



dlobinson
07-16-2020 @ 2045 hrs
Acres from IR and field reports
WGS84 Lat/Long grid



Incident Action Plan

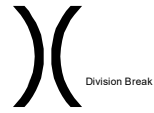
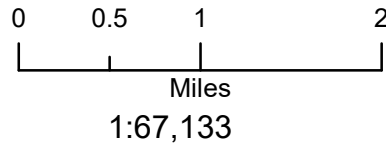
Blue River 2 and Valley Fires

AZSCA-002036 and 002037

20200717 day

Page 7 of 7

Approx 26,600 ac (Blue River 2)
and 28,959 ac (Valley Fire) GPS Flight at
1200 July 16, 2020



- Uncontrolled Fire Edge
- Contained Line
- Completed Hand Line
- Road as Completed Line
- Completed Burnout
- Temporary Flight Restriction
- Wildfire Daily Fire Perimeter
- Main Roads
- Other Roads
- Place Name
- Perennial Lake
- Intermittent Lake
- State or Territory
- County or Equivalent
- Native American
- Wilderness
- Bureau of Land Management
- Twn Rng
- Twn Rng Protracted
- Section
- Section Protracted



dlobinson
07-16-2020 @ 2046 hrs
Acres from IR and field reports
WGS84 Lat/Long grid

