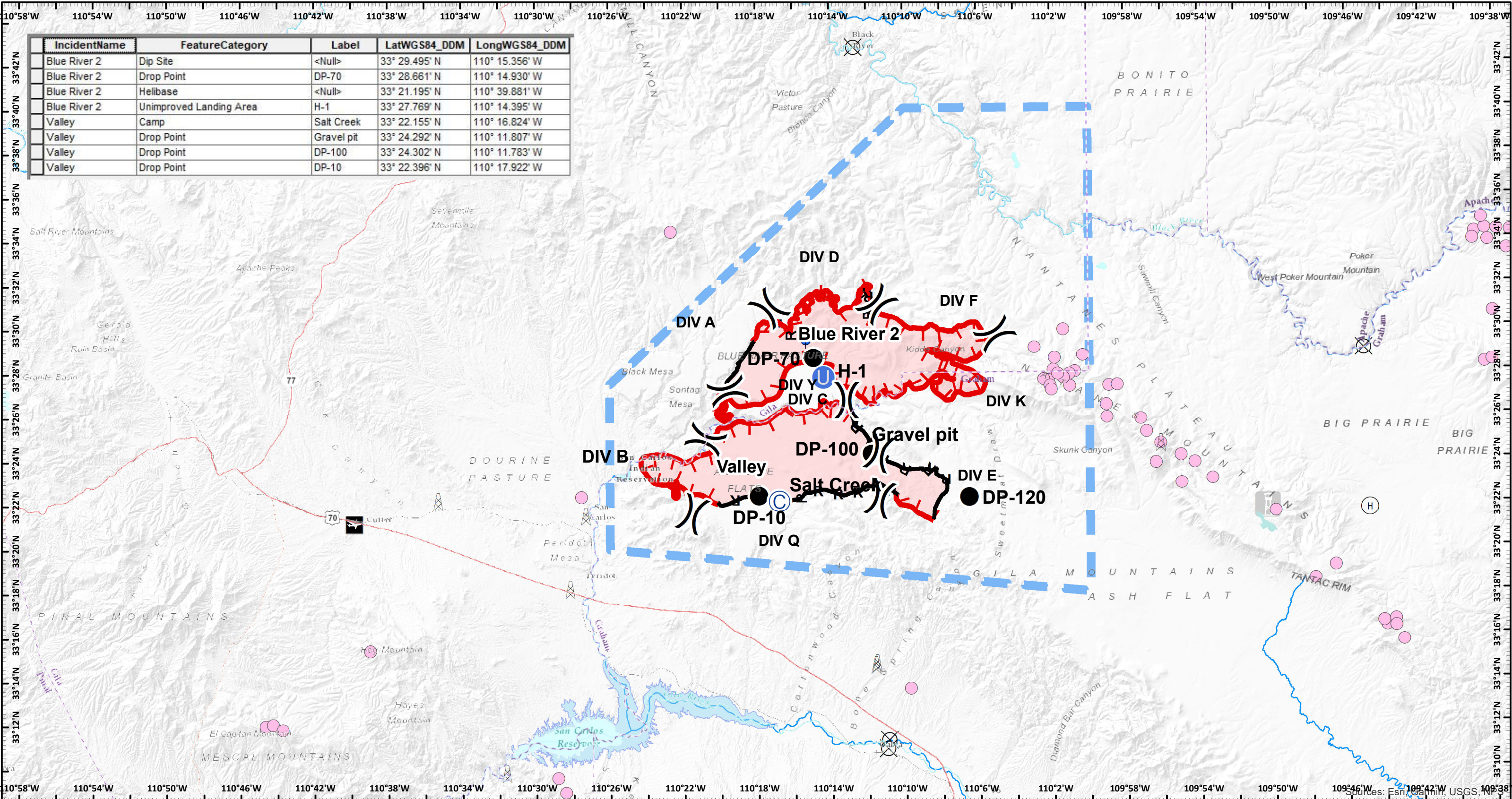


IncidentName	FeatureCategory	Label	LatWGS84_DDM	LongWGS84_DDM
Blue River 2	Dip Site	<Null>	33° 29.495' N	110° 15.356' W
Blue River 2	Drop Point	DP-70	33° 28.661' N	110° 14.930' W
Blue River 2	Helibase	<Null>	33° 21.195' N	110° 39.881' W
Blue River 2	Unimproved Landing Area	H-1	33° 27.769' N	110° 14.395' W
Valley	Camp	Salt Creek	33° 22.155' N	110° 16.824' W
Valley	Drop Point	Gravel pit	33° 24.292' N	110° 11.807' W
Valley	Drop Point	DP-100	33° 24.302' N	110° 11.783' W
Valley	Drop Point	DP-10	33° 22.396' N	110° 17.922' W



**Pilot**  
 Blue River 2 and Valley  
 AZSCA-002036 and AZSCA-002037  
 July 17, 2020

- ✕ Air hazard
- ⊙ Previously used Helibase
- ✈ Airfield
- ⊙ Previously used Helispot
- ⊙ Com Site
- 🗼 Lookout Tower
- ⌋ Division Break
- ⊙ Camp
- Drop Point
- ⊙ Dip Site
- ⊙ Unimproved Landing Area
- 🔴 Uncontrolled Fire Edge
- 🔵 Temporary Flight Restriction
- ⊙ Completed Hand Line
- ⊙ Rivers
- 🔴 Wildfire Daily Fire Perimeter
- ⊙ Road as Completed Line

NAD 1983 UTM Zone 12N  
 Prepared by: zdriscoll  
 7/16/2020 2051 hrs



Approximate Acres (GPS Flight)  
 Blue River 2: 26,600, as of 20200716 @1200  
 Valley: 28,959 as of 20200716 @1200

