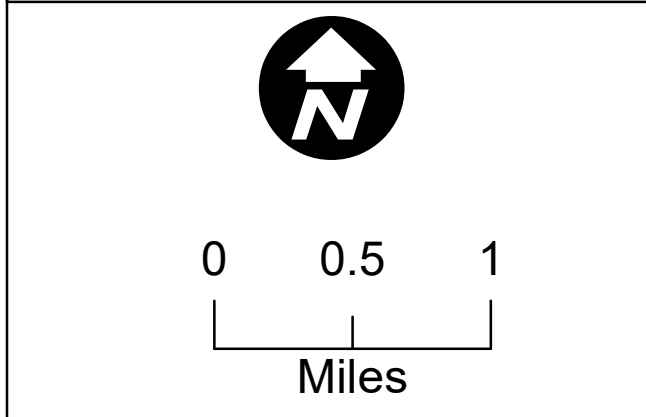
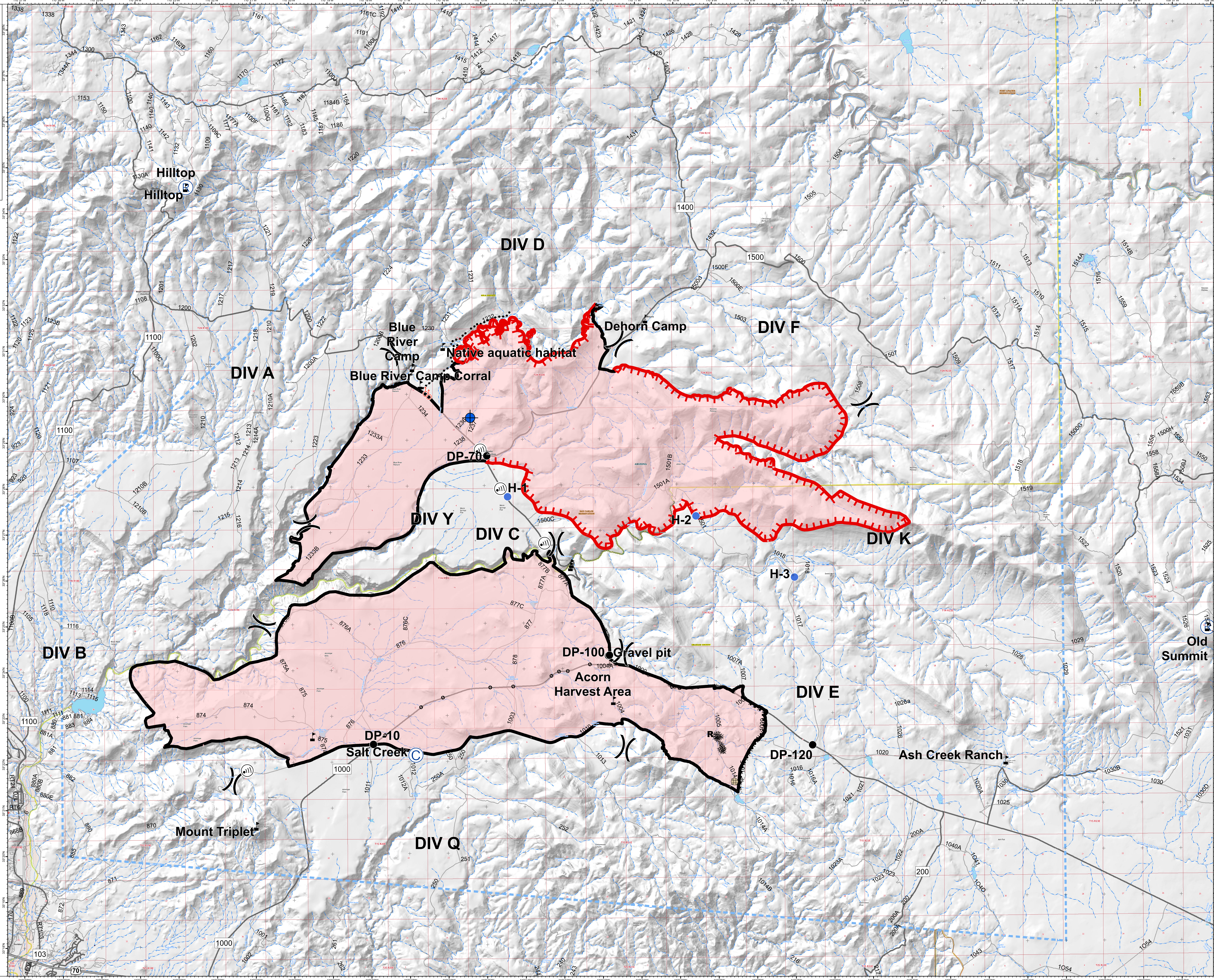


Briefing
 Blue River 2 and Valley Fires
 AZSCA-002036 and AZSCA-002037
 07/19/2020 Day
 Approx acres
 Blue River 2: 27,978
 at 7/18/2020 1600
 Valley: 29,639
 at 7/17/2020 1200



- Legend**
- Fence - Cut/Damaged
 - Resource Location
 - Camp
 - Dip Site
 - Drop Point
 - Helipoint
 - Internet Access
 - Repeater
 - Spot Fire
 - Value at Risk
 - Division Break
 - Uncontrolled Fire Edge
 - Temporary Flight Restriction
 - Fence
 - Contained Line
 - Completed Dicer Line
 - Completed Hand Line
 - Road as Completed Line
 - Completed Burnout
 - Fire Break Planned or Incomplete
 - Planned Secondary Line
 - Other
 - Wildfire Daily Fire Perimeter
 - Highway
 - Main Road
 - Other Road
 - Place Name
 - Hospital
 - Law Enforcement
 - Gaging Station
 - Spring
 - Waterfall
 - Perennial Stream
 - Non-Perennial Stream
 - Earthen Dam
 - Non-earthen Shore
 - Perennial Lake
 - Intermittent Lake
 - Perennial Lake
 - Rapids
 - Lock Chamber, Spillway
 - Wash
 - Inundation Area
 - State or Territory
 - County or Equivalent
 - Native American
 - Bureau of Land Management
 - Town Ring
 - Section



zdriscoll
 07-18-2020 20:19 hrs
 Acres from IR and field reports
 WGS84 Lat/Long grid