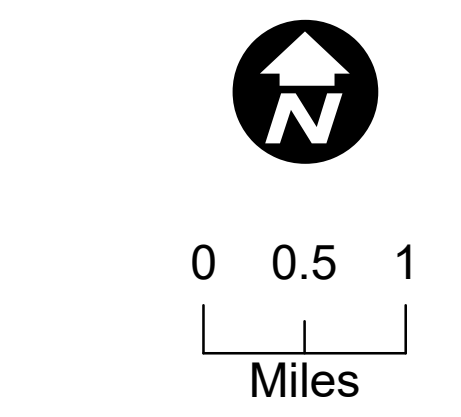
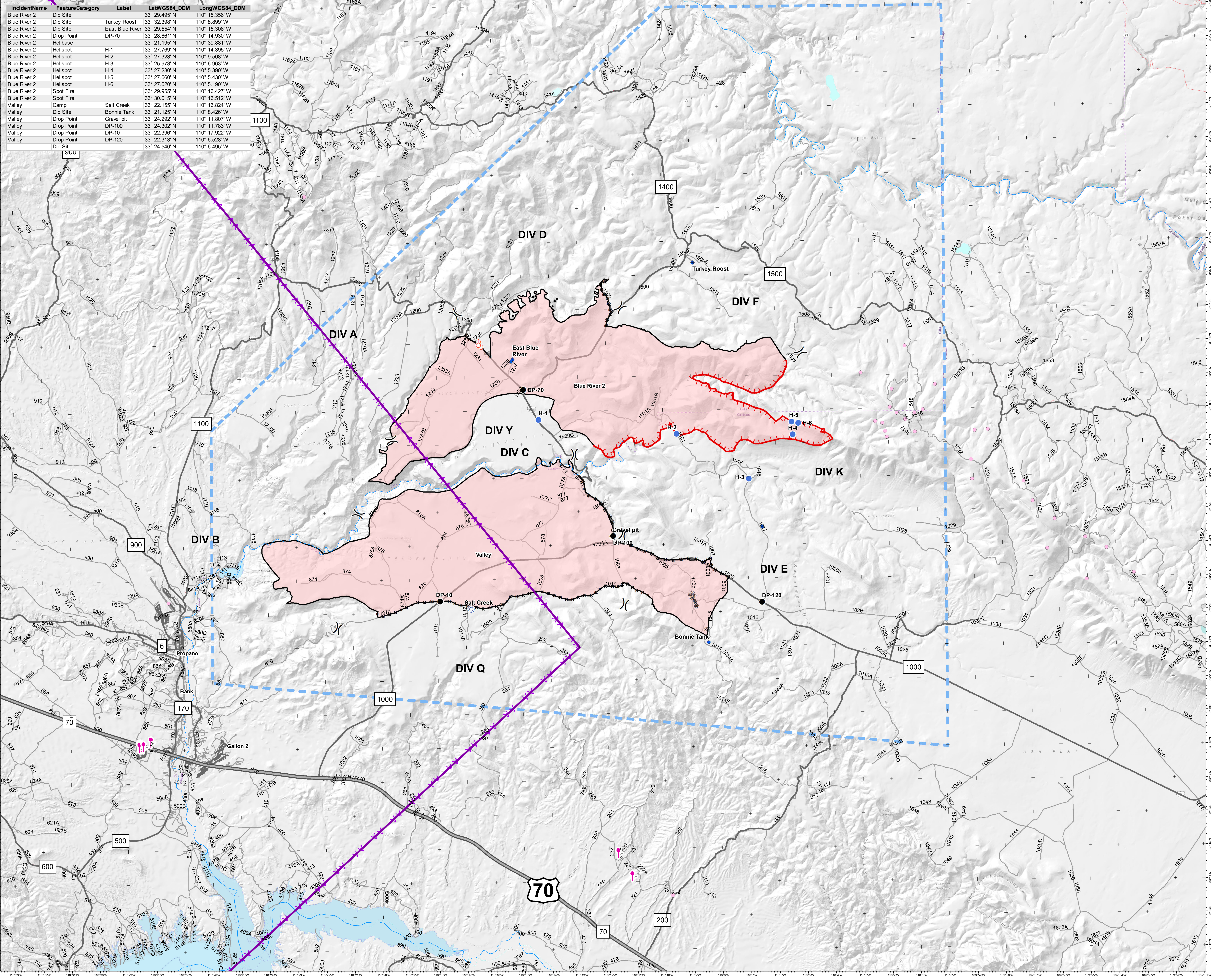


**Air Ops**  
**Blue River 2 and Valley**  
**AZSCA-002036**  
**AZSCA 002037**  
**07/20/2020 day**  
 Appox acres  
 Blue River 2: 28,051  
 IR at 7/18/2020 2208  
 Valley: 29,639  
 at 7/17/2020 1200

IncidentName	FeatureCategory	Label	LatWGS84_DDM	LongWGS84_DDM
Blue River 2	Dip Site	33° 29.485' N	110° 15.356' W	
Blue River 2	Dip Site	Turkey Roost	33° 32.398' N	110° 8.899' W
Blue River 2	Dip Site	East Blue River	33° 29.554' N	110° 15.306' W
Blue River 2	Drop Point	DP-70	33° 28.661' N	110° 14.930' W
Blue River 2	Helibase		33° 21.195' N	110° 39.881' W
Blue River 2	Helispot	H-1	33° 27.769' N	110° 14.395' W
Blue River 2	Helispot	H-2	33° 27.323' N	110° 9.508' W
Blue River 2	Helispot	H-3	33° 25.973' N	110° 6.963' W
Blue River 2	Helispot	H-4	33° 27.280' N	110° 5.390' W
Blue River 2	Helispot	H-5	33° 27.660' N	110° 5.430' W
Blue River 2	Helispot	H-6	33° 27.620' N	110° 5.190' W
Blue River 2	Spot Fire		33° 29.955' N	110° 16.427' W
Blue River 2	Spot Fire		33° 30.015' N	110° 16.512' W
Valley	Camp	Salt Creek	33° 22.155' N	110° 16.824' W
Valley	Dip Site	Bonnie Tank	33° 21.125' N	110° 8.426' W
Valley	Drop Point		33° 24.292' N	110° 11.807' W
Valley	Drop Point	DP-100	33° 24.302' N	110° 11.783' W
Valley	Drop Point	DP-10	33° 22.396' N	110° 17.922' W
Valley	Drop Point	DP-120	33° 22.313' N	110° 6.528' W
Valley	Dip Site		33° 24.546' N	110° 6.495' W



- Legend**
- DVOF Vertical Structure
  - DAFIF Military
  - MTR Flight
  - Air hazard
  - Com Site
  - Previously used Helispot
  - Rivers
  - Division Break
  - Camp
  - Dip Site
  - Drop Point
  - Helispot
  - Spot Fire
  - Uncontrolled Fire Edge
  - Contained Line
  - Completed Outer Line
  - Completed Hand Line
  - Road as Completed Line
  - Temporary Flight Restriction
  - Wildfire Daily Fire Perimeter
  - Highway
  - Main Road
  - Other Road
  - Lakes



zdriscoll  
 07-19-2020 20:13 hrs  
 Acres from IR and field reports  
 WGS84 Lat/Long grid