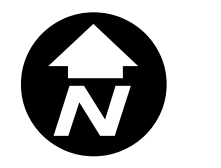


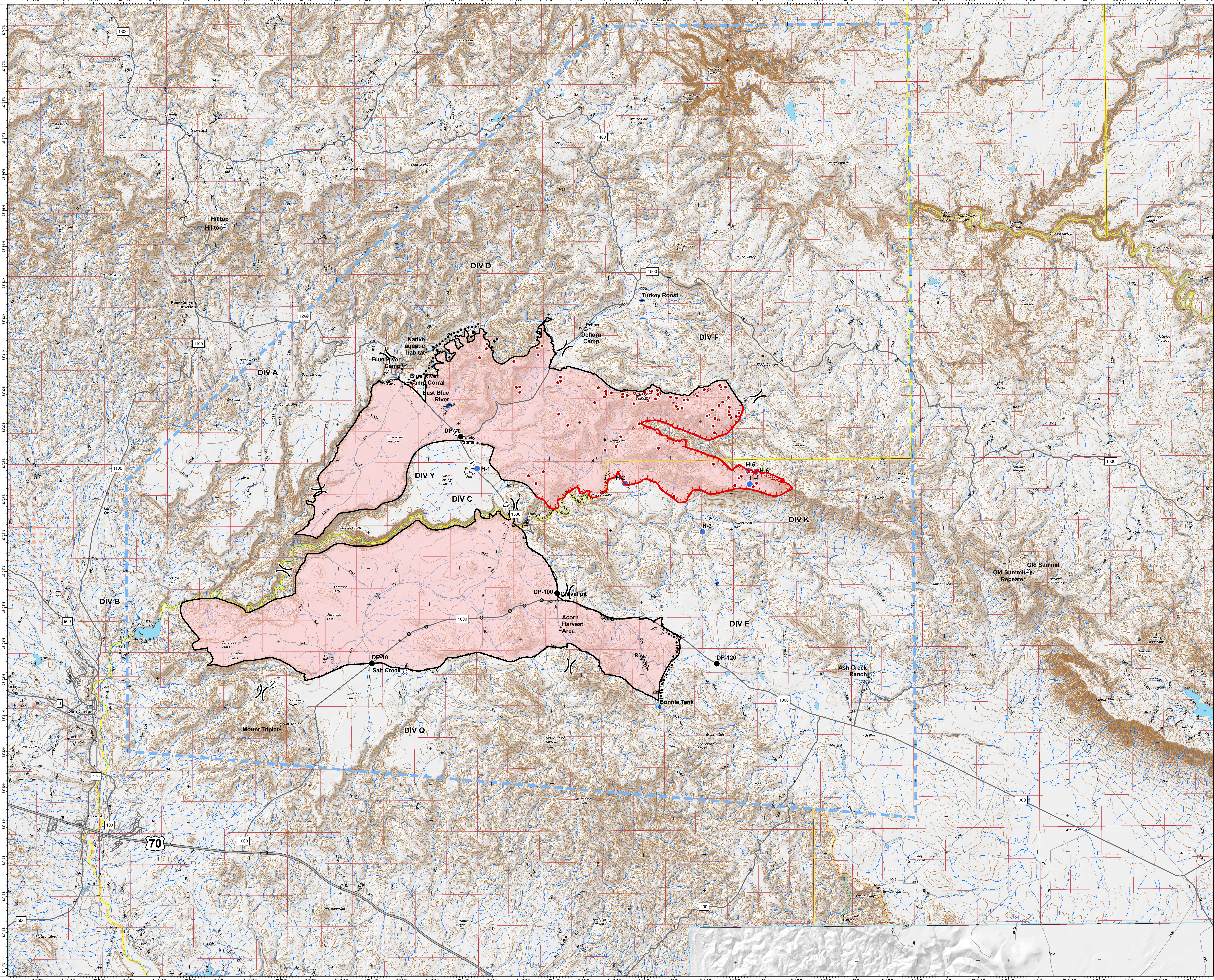
**Operations**  
**Blue River 2 and**  
**Valley**  
 AZSCA-002036  
 AZSCA-002037  
 07/20/2020 day  
 Approx acres  
 Blue River 2: 28,051  
 IR at 7/18/2020 2208  
 Valley: 29,639  
 at 7/17/2020 1200



0 0.5 1  
 Miles

**Legend**

- Uncontrolled Fire Edge
- Contained Line
- Completed Dozer Line
- Completed Hand Line
- Road as Completed Line
- Completed Burnout
- Fire Break Planned or in Progress
- Planned Secondary Line
- Temporary Flight Restriction
- Fence
- Other
- 20200719 Blue River 2 Fire Perimeter
- 20200719 Blue River 2 Isolated Heat Sources
- 20200719 Blue River 2 Scattered Heat
- Camp
- Dip Site
- Drop Point
- Fence - Cut/Damaged
- Hilltop
- Internet Access
- Repeater
- Resource Location
- Spot Fire
- Value at Risk
- Division Break
- Highway
- Main Road
- Other Road
- Wildfire Daily Fire Perimeter
- Place Name
- Hospital
- Law Enforcement
- Clipping Station
- Spring
- Waterfall
- Well
- Perennial Stream
- Non-Perennial Stream
- Underground Pipeline
- Earthen Dam
- Nonnatural Shore
- Perennial Lake
- Intermittent Lake
- Perennial Lake
- Rapids
- Lock Chamber
- Softway
- Wash
- Inundation Area
- State or Territory
- County or Equivalent
- Native American
- Wilderness
- Bureau of Land Management
- Tim Ring
- Section



zdriscoll  
 07-19-2020 2030 hrs  
 Acres from IR and field reports  
 WGS84 Lat/Long grid