

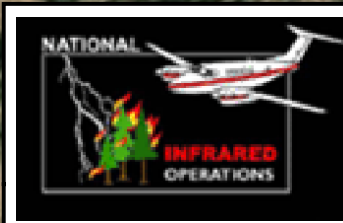
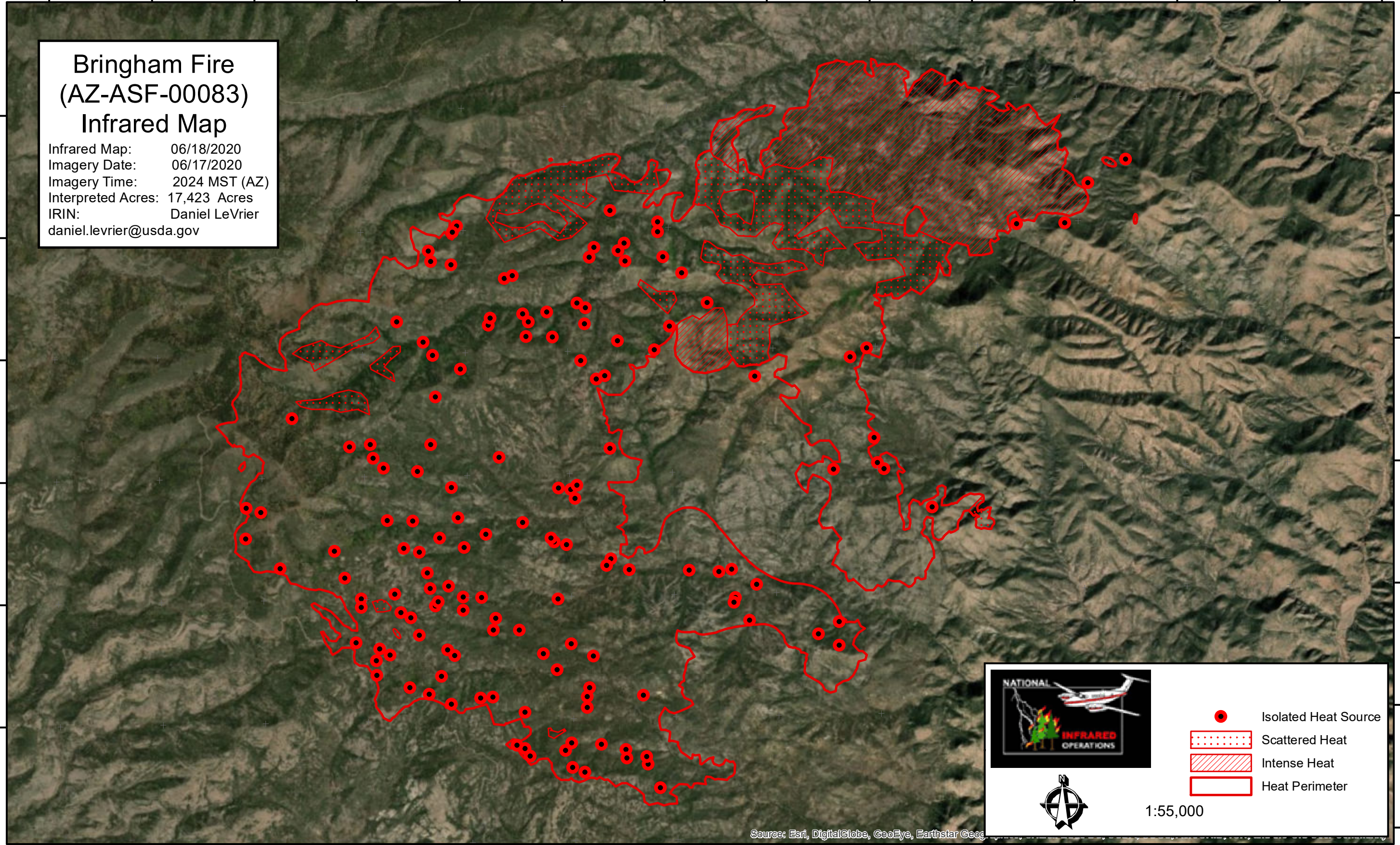
109°24'0"W 109°23'0"W 109°22'0"W 109°21'0"W 109°20'0"W 109°19'0"W 109°18'0"W 109°17'0"W 109°16'0"W 109°15'0"W 109°14'0"W 109°13'0"W 109°12'0"W 109°11'0"W





Bringham Fire (AZ-ASF-00083) Infrared Map

Infrared Map: 06/18/2020
Imagery Date: 06/17/2020
Imagery Time: 2024 MST (AZ)
Interpreted Acres: 17,423 Acres
IRIN: Daniel LeVrier
daniel.levrier@usda.gov

33°29'0"N
33°28'0"N
33°27'0"N
33°26'0"N
33°25'0"N
33°24'0"N
33°23'0"N

33°29'0"N
33°28'0"N
33°27'0"N
33°26'0"N
33°25'0"N
33°24'0"N
33°23'0"N



-  Isolated Heat Source
-  Scattered Heat
-  Intense Heat
-  Heat Perimeter

1:55,000

Source: Esri, DigitalGlobe, GeoEye, Earthstar Geog

109°24'0"W 109°23'0"W 109°22'0"W 109°21'0"W 109°20'0"W 109°19'0"W 109°18'0"W 109°17'0"W 109°16'0"W 109°15'0"W 109°14'0"W 109°13'0"W 109°12'0"W 109°11'0"W