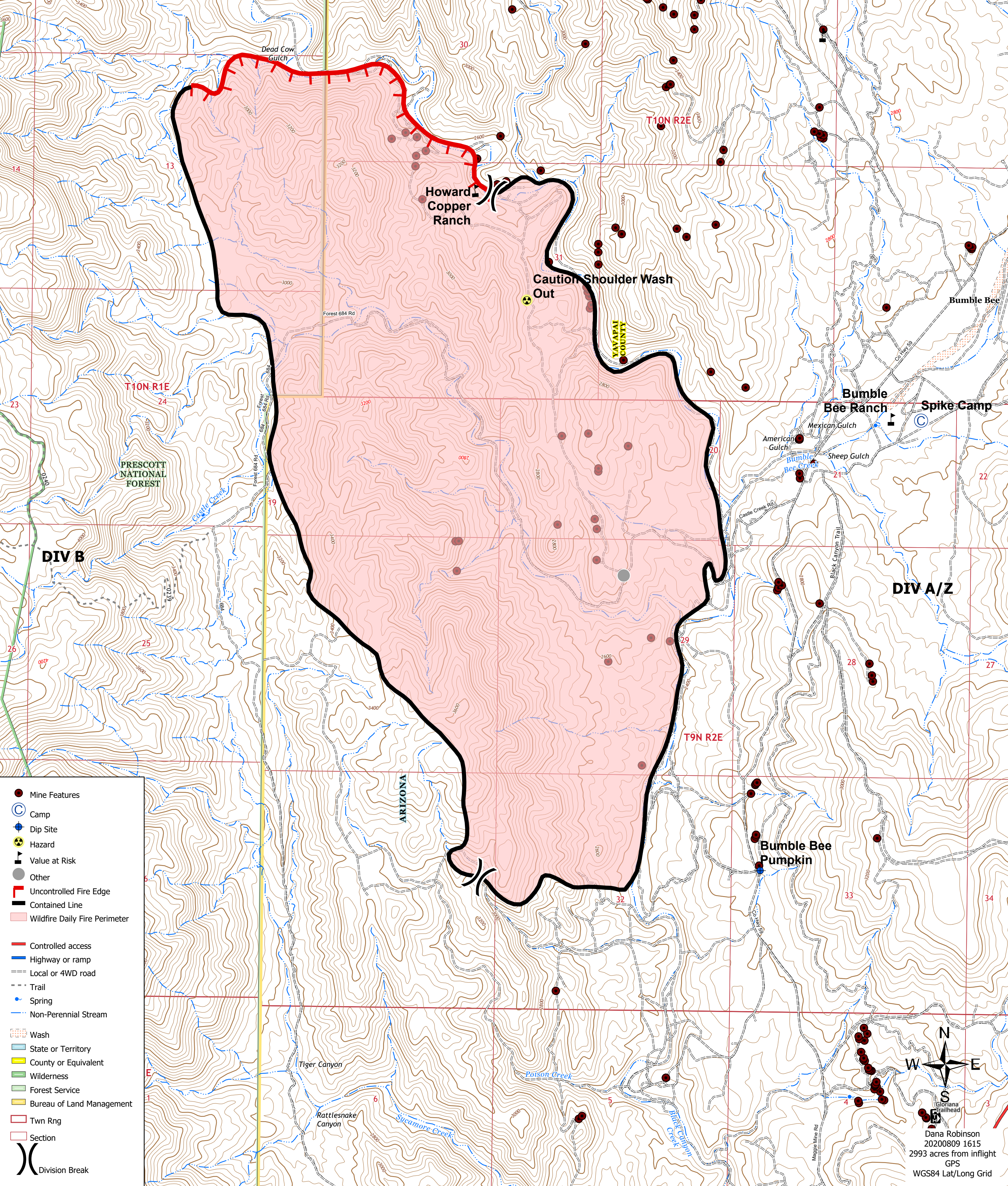
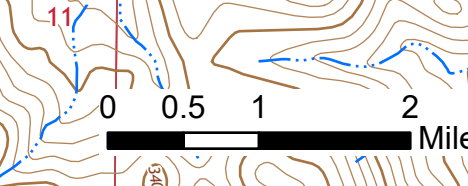
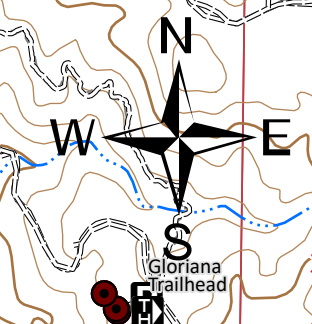


112°13'20"W 112°13'10"W 112°13'W 112°12'50"W 112°12'40"W 112°12'30"W 112°12'20"W 112°12'10"W 112°12'W 112°11'50"W 112°11'40"W 112°11'30"W 112°11'20"W 112°11'10"W 112°11'W 112°10'50"W 112°10'40"W 112°10'30"W 112°10'20"W 112°10'10"W 112°10'W 112°9'50"W 112°9'40"W 112°9'30"W 112°9'20"W 112°9'10"W 112°9'W

**Incident Action Plan/Ops**  
**Bumble Bee**  
**AZ PHD 001536**  
**20200810 Day**  
Approx. 2993 ac at 20200808 1615



- Mine Features
- Camp
- Dip Site
- ⚠ Hazard
- ⚠ Value at Risk
- Other
- Uncontrolled Fire Edge
- Contained Line
- Wildfire Daily Fire Perimeter
- Controlled access
- Highway or ramp
- Local or 4WD road
- Trail
- Spring
- Non-Perennial Stream
- Wash
- State or Territory
- County or Equivalent
- Wilderness
- Forest Service
- Bureau of Land Management
- Twn Rng
- Section
- Division Break



Dana Robinson  
20200809 1615  
2993 acres from inflight GPS  
WGS84 Lat/Long Grid

112°13'20"W 112°13'10"W 112°13'W 112°12'50"W 112°12'40"W 112°12'30"W 112°12'20"W 112°12'10"W 112°12'W 112°11'50"W 112°11'40"W 112°11'30"W 112°11'20"W 112°11'10"W 112°11'W 112°10'50"W 112°10'40"W 112°10'30"W 112°10'20"W 112°10'10"W 112°10'W 112°9'50"W 112°9'40"W 112°9'30"W 112°9'20"W 112°9'10"W 112°9'W