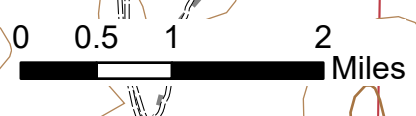
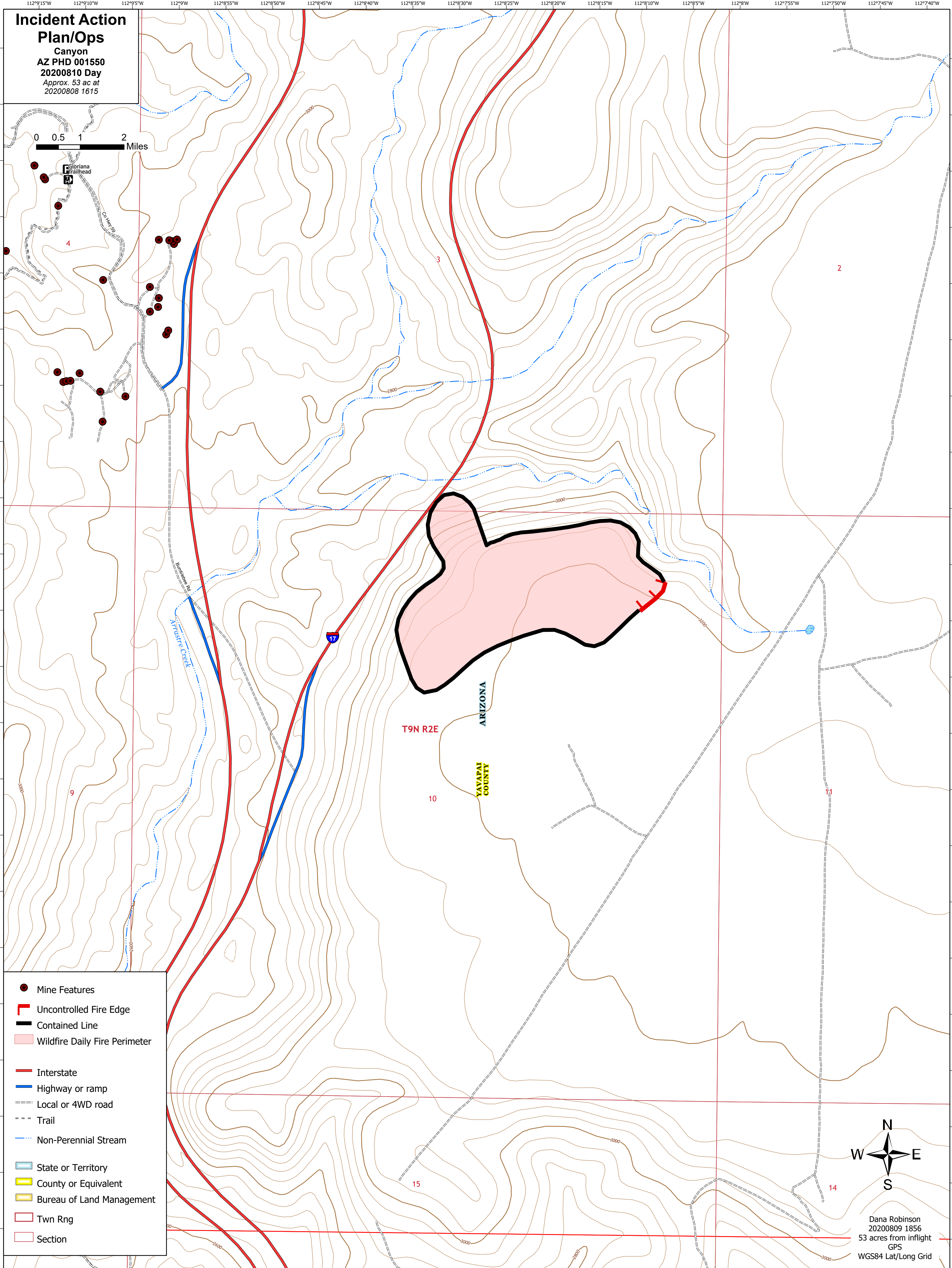


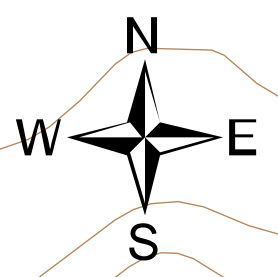
**Incident Action  
Plan/Ops**  
Canyon  
AZ PHD 001550  
20200810 Day  
Approx. 53 ac at  
20200808 1615



Gloriana  
Railhead



- Mine Features
- ▬ Uncontrolled Fire Edge
- ▬ Contained Line
- ▭ Wildfire Daily Fire Perimeter
- ▬ Interstate
- ▬ Highway or ramp
- ▬ Local or 4WD road
- ▬ Trail
- ▬ Non-Perennial Stream
- ▭ State or Territory
- ▭ County or Equivalent
- ▭ Bureau of Land Management
- ▭ Twn Rng
- ▭ Section



Dana Robinson  
20200809 1856  
53 acres from inflight  
GPS  
WGS84 Lat/Long Grid