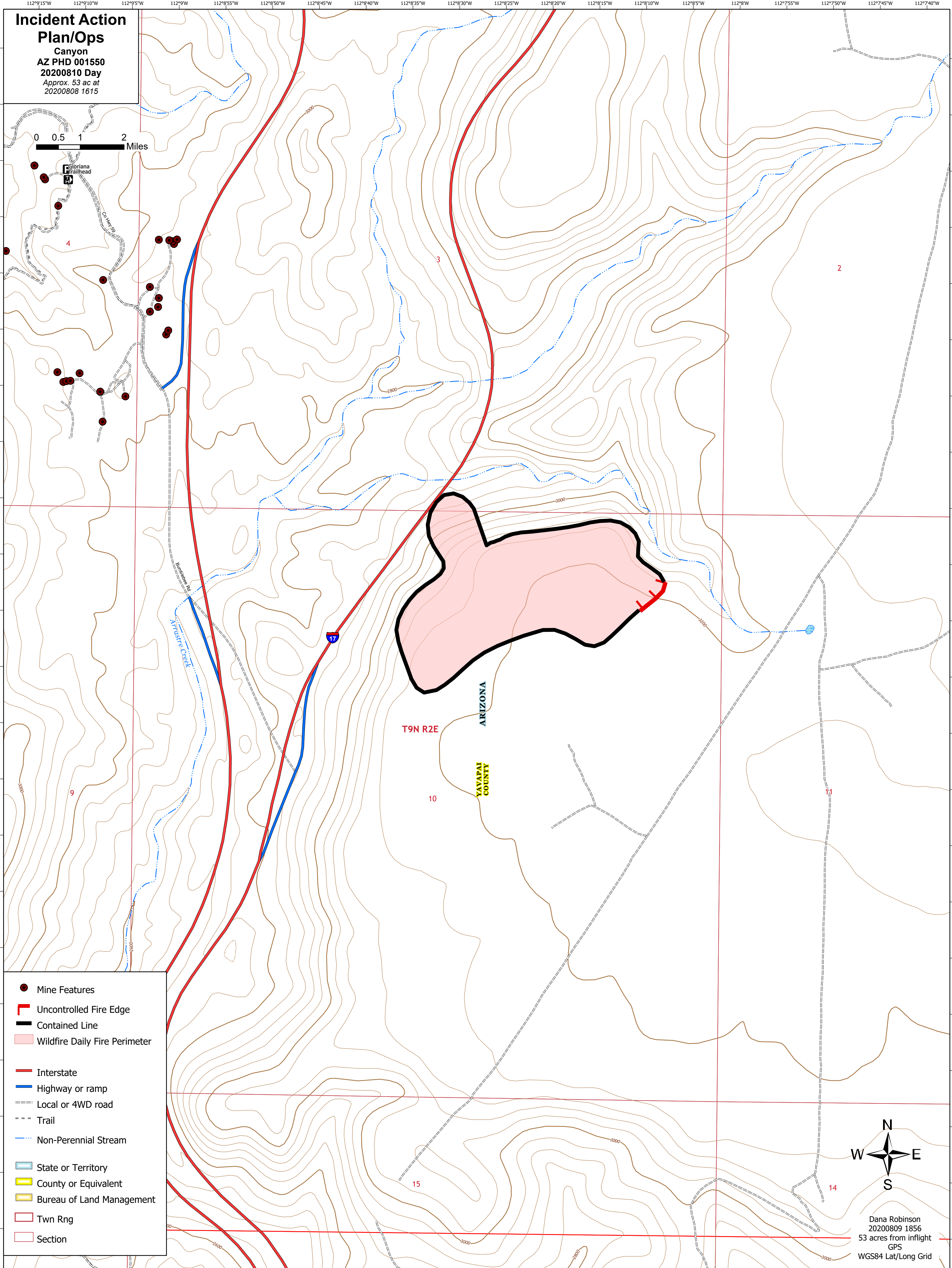


**Incident Action
Plan/Ops**
Canyon
AZ PHD 001550
20200810 Day
Approx. 53 ac at
20200808 1615

0 0.5 1 2 Miles

Gloriana
Trailhead

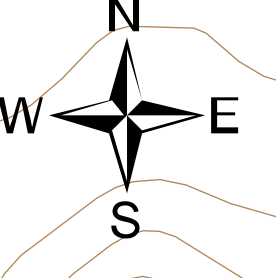


T9N R2E

YAVAPAI
COUNTY

ARIZONA

- Mine Features
- ┌ Uncontrolled Fire Edge
- ▬ Contained Line
- ▭ Wildfire Daily Fire Perimeter
- ▬ Interstate
- ▬ Highway or ramp
- ▬ Local or 4WD road
- ▬ Trail
- ▬ Non-Perennial Stream
- ▭ State or Territory
- ▭ County or Equivalent
- ▭ Bureau of Land Management
- ▭ Twn Rng
- ▭ Section



Dana Robinson
20200809 1856
53 acres from inflight
GPS
WGS84 Lat/Long Grid