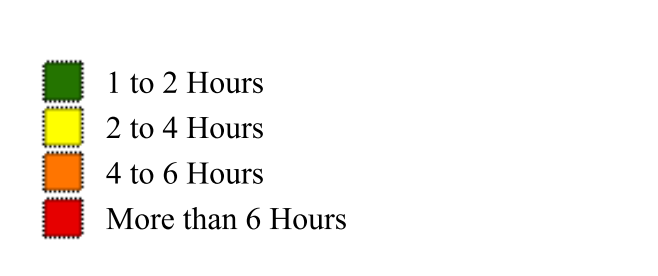
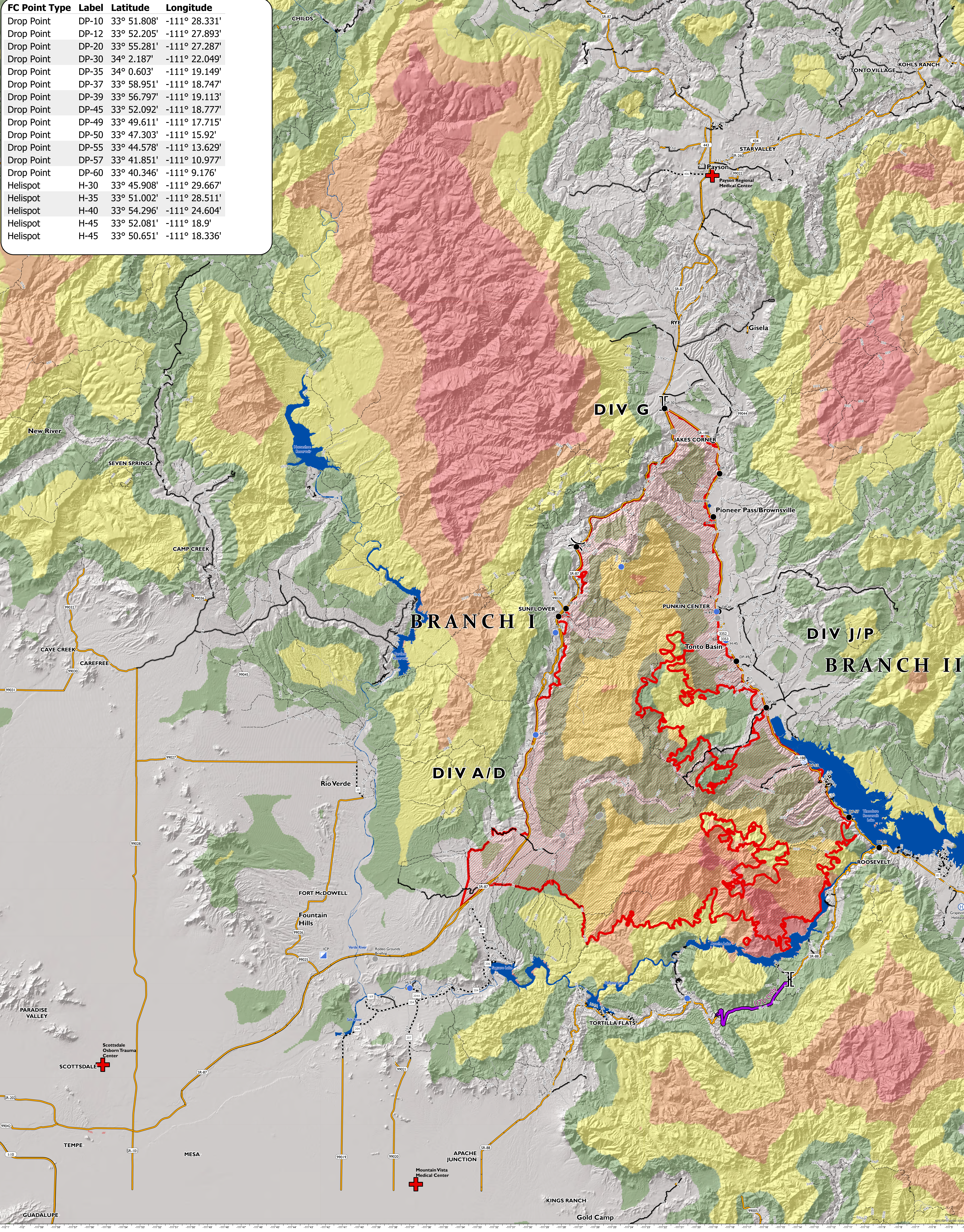


FC Point Type	Label	Latitude	Longitude
Drop Point	DP-10	33° 51.808'	-111° 28.331'
Drop Point	DP-12	33° 52.205'	-111° 27.893'
Drop Point	DP-20	33° 55.281'	-111° 27.287'
Drop Point	DP-30	34° 2.187'	-111° 22.049'
Drop Point	DP-35	34° 0.603'	-111° 19.149'
Drop Point	DP-39	33° 58.951'	-111° 18.747'
Drop Point	DP-37	33° 56.797'	-111° 19.113'
Drop Point	DP-45	33° 52.092'	-111° 18.777'
Drop Point	DP-49	33° 49.611'	-111° 17.715'
Drop Point	DP-50	33° 47.303'	-111° 15.92'
Drop Point	DP-55	33° 44.578'	-111° 13.629'
Drop Point	DP-57	33° 41.851'	-111° 10.977'
Drop Point	DP-60	33° 40.346'	-111° 9.176'
Helispot	H-30	33° 45.908'	-111° 29.667'
Helispot	H-35	33° 51.002'	-111° 28.511'
Helispot	H-40	33° 54.296'	-111° 24.604'
Helispot	H-45	33° 52.081'	-111° 18.9'
Helispot	H-45	33° 50.651'	-111° 18.336'



- × Closure
- Dip Site
- ⊙ Helibase
- Helispot
- ▲ Incident Command Post
- Staging Area
- Drop Point
- ⊗ Division Break
- ⊥ Branch Break
- 2 - HIGH CLEARANCE VEHICLES
- 3 - SUITABLE FOR PASSENGER CARS
- 4 - MODERATE DEGREE OF USER COMFORT

- 5 - HIGH DEGREE OF USER COMFORT
- State Route 87
- Closed Roads
- Inpassable Road
- ⊕ Hospitals

