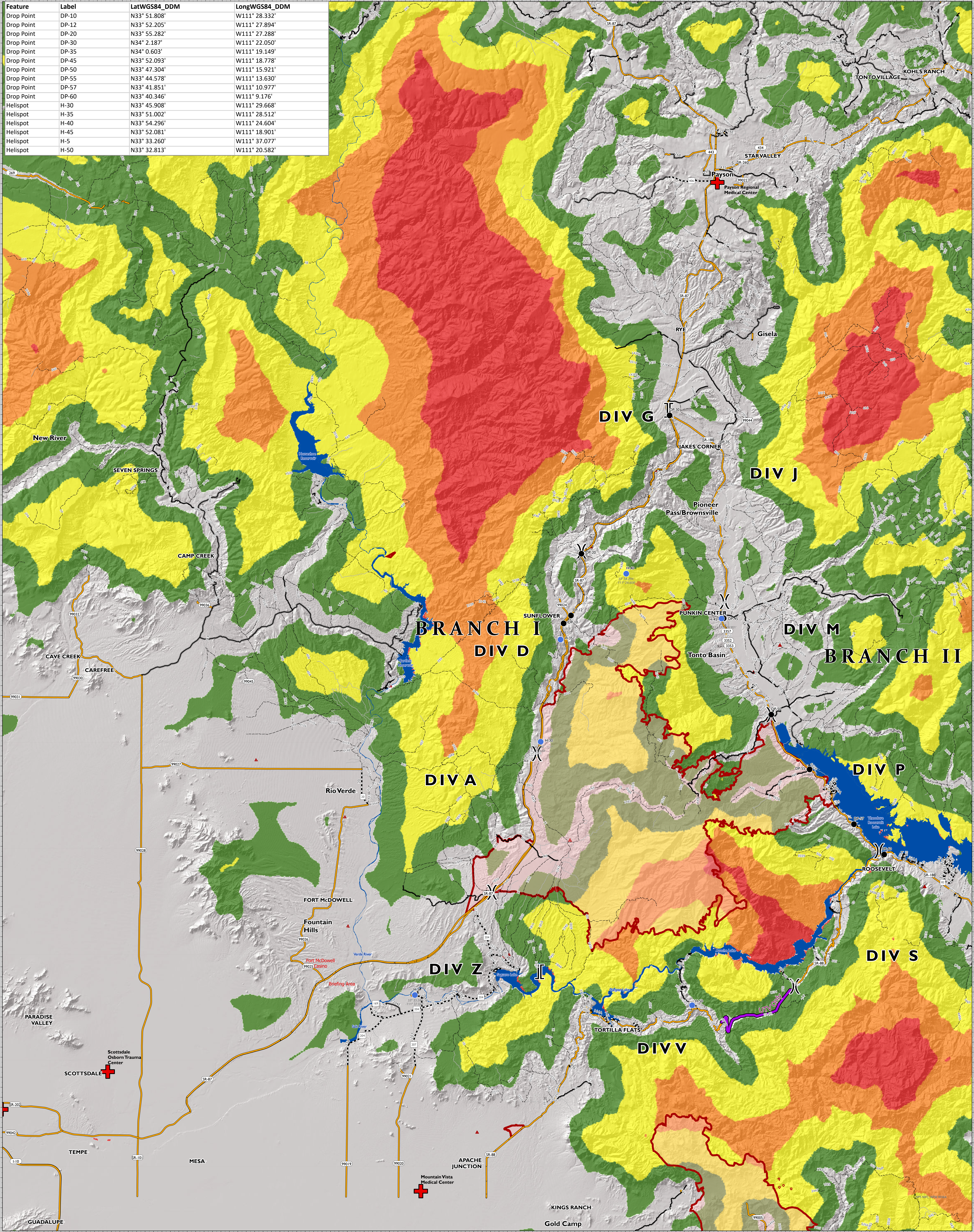
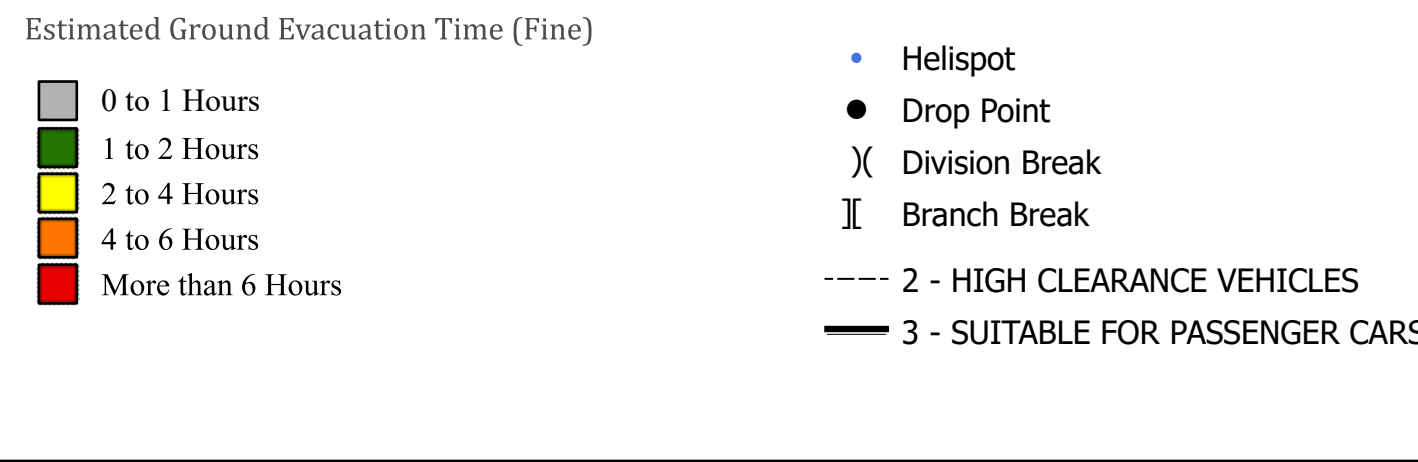


Feature	Label	LatWGS84_DDM	LongWGS84_DDM
Drop Point	DP-10	N33° 51.808'	W111° 28.332'
Drop Point	DP-12	N33° 52.205'	W111° 27.894'
Drop Point	DP-20	N33° 55.282'	W111° 27.288'
Drop Point	DP-30	N34° 2.187'	W111° 22.050'
Drop Point	DP-35	N34° 0.603'	W111° 19.149'
Drop Point	DP-45	N33° 52.093'	W111° 18.778'
Drop Point	DP-50	N33° 47.304'	W111° 15.921'
Drop Point	DP-55	N33° 44.578'	W111° 13.630'
Drop Point	DP-57	N33° 41.851'	W111° 10.977'
Drop Point	DP-60	N33° 40.346'	W111° 9.176'
Helispot	H-30	N33° 45.908'	W111° 29.668'
Helispot	H-35	N33° 51.002'	W111° 28.512'
Helispot	H-40	N33° 54.296'	W111° 24.604'
Helispot	H-45	N33° 52.081'	W111° 18.901'
Helispot	H-5	N33° 33.260'	W111° 37.077'
Helispot	H-50	N33° 32.813'	W111° 20.582'



**Bush Fire**  
 AZ-TNF-001581  
 6/19/2020 DAY  
**MEDICAL EVAC MAP**



- Helispot
- Drop Point
- X Division Break
- || Branch Break
- 2 - HIGH CLEARANCE VEHICLES
- 3 - SUITABLE FOR PASSENGER CARS
- 4 - MODERATE DEGREE OF USER COMFORT
- 5 - HIGH DEGREE OF USER COMFORT
- State Route 87
- Closed Roads
- Wildfire Daily Fire Perimeter

- Other
- Lakes
- Hospitals
- Inpassable Road

Miles 0 2 4 8  
 Kilometers 0 2 4 8

GIS Calculated Acres from IR 114,941 Acres  
 As of 6/17/2020 at 12:49  
 NAD 1983 UTM Zone 12N  
 Created 6/18/2020 10:07 AM by dmj

Southwest Area  
 Incident Management Team 5  
 1:100,000