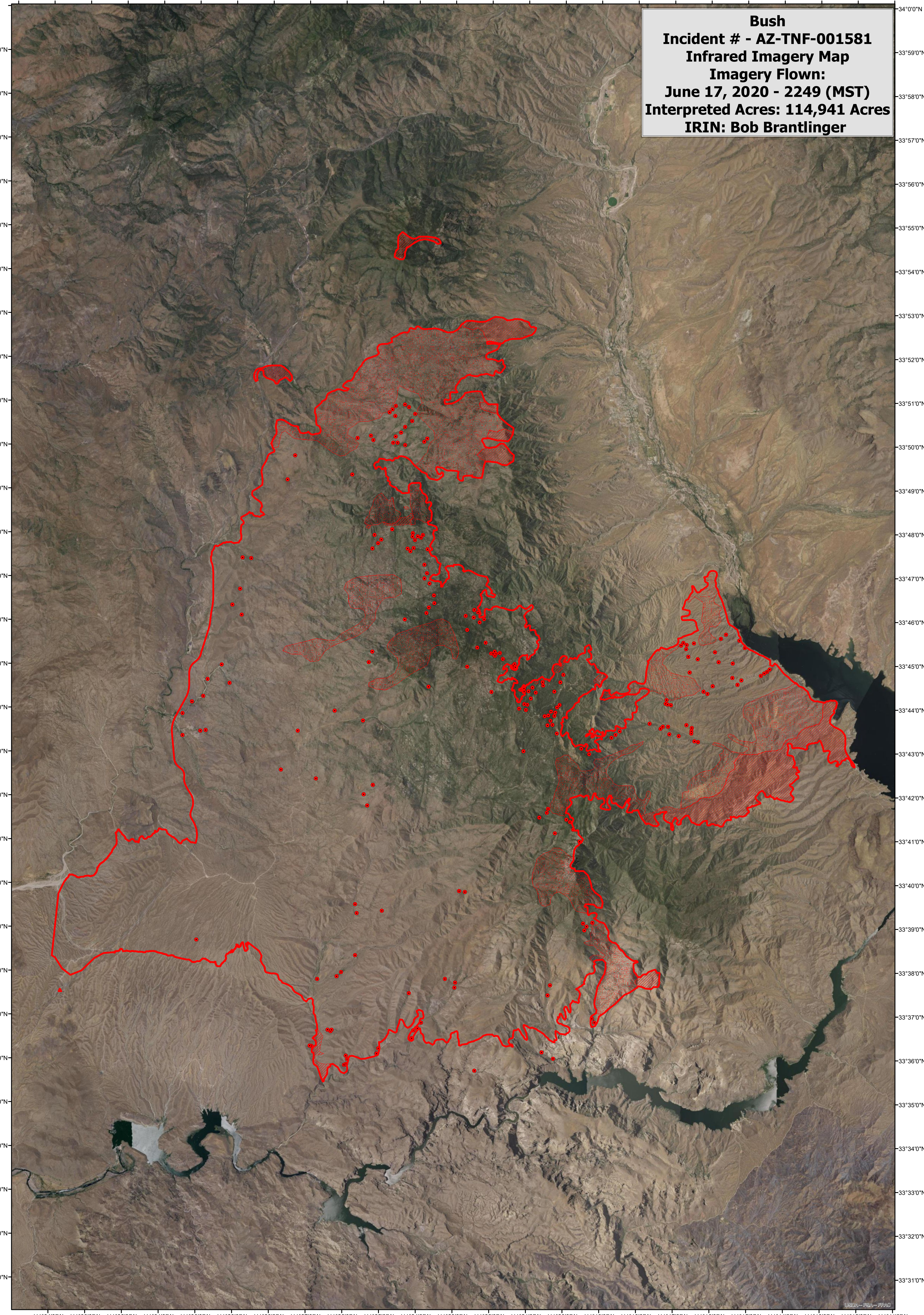



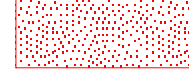


111°35'0"W 111°34'0"W 111°33'0"W 111°32'0"W 111°31'0"W 111°30'0"W 111°29'0"W 111°28'0"W 111°27'0"W 111°26'0"W 111°25'0"W 111°24'0"W 111°23'0"W 111°22'0"W 111°21'0"W 111°20'0"W 111°19'0"W 111°18'0"W 111°17'0"W 111°16'0"W 111°15'0"W 111°14'0"W 111°13'0"W 111°12'0"W 111°11'0"W

**Bush**  
**Incident # - AZ-TNF-001581**  
**Infrared Imagery Map**  
**Imagery Flow:**  
**June 17, 2020 - 2249 (MST)**  
**Interpreted Acres: 114,941 Acres**  
**IRIN: Bob Brantlinger**



**Legend**

-  **Heat Perimeter**
-  **Intense Heat**
-  **Isolated Heat Source**
-  **Scattered Heat Source**

